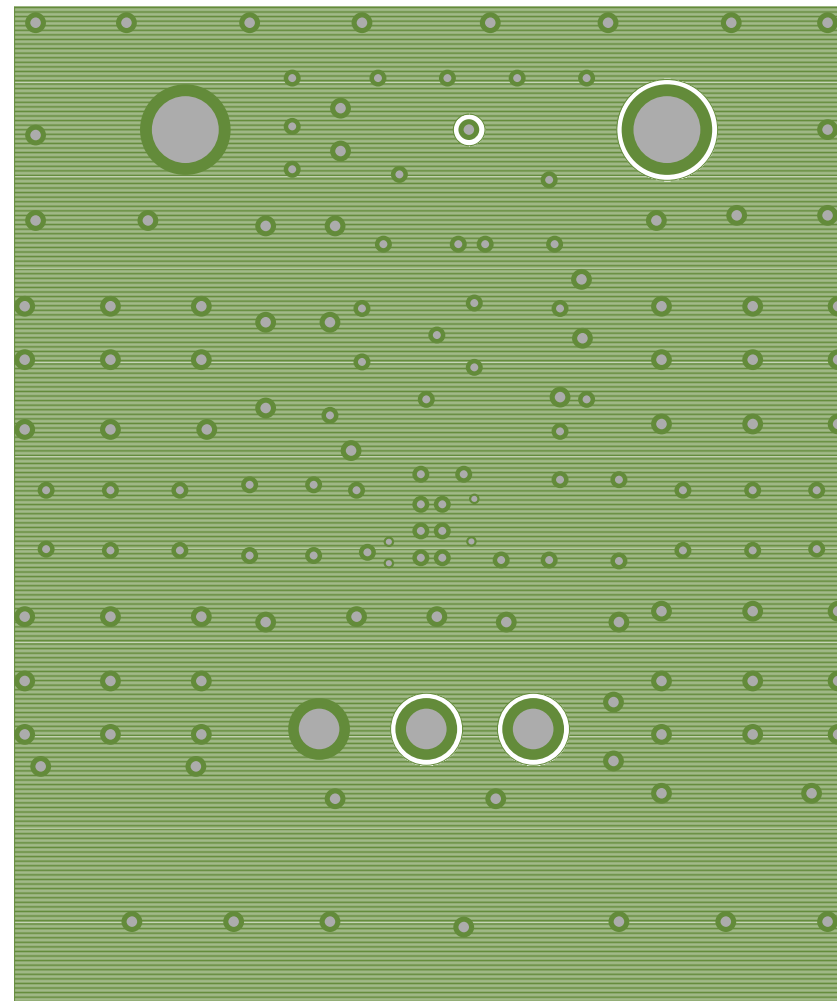
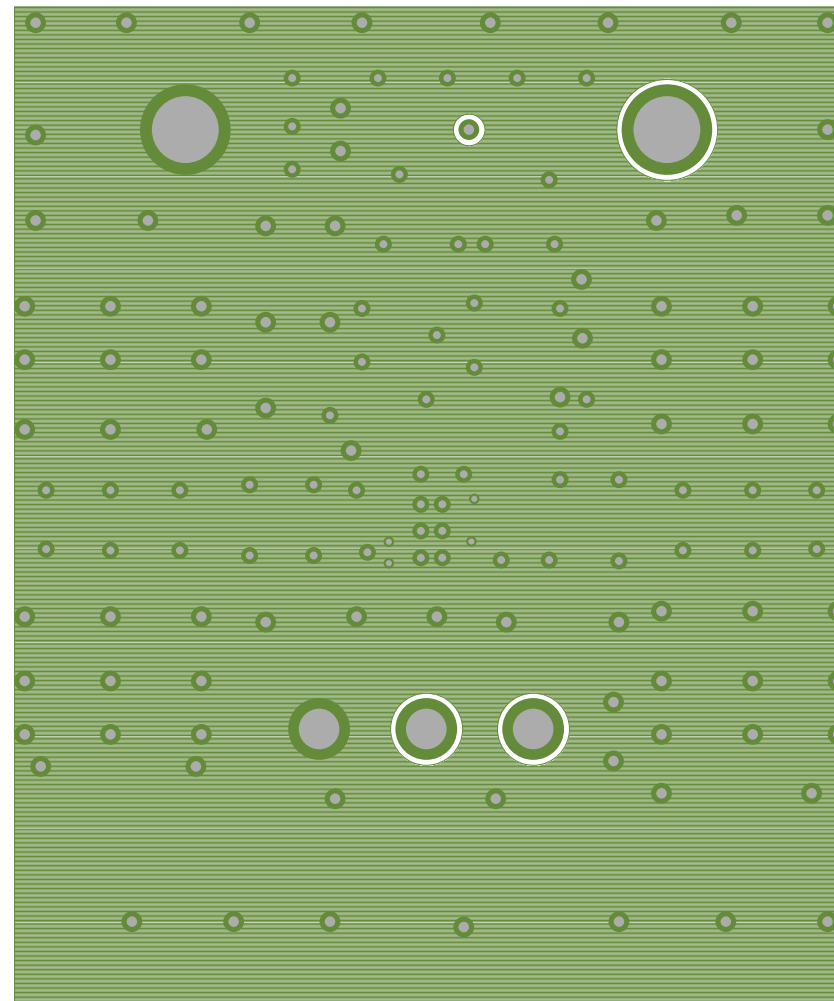


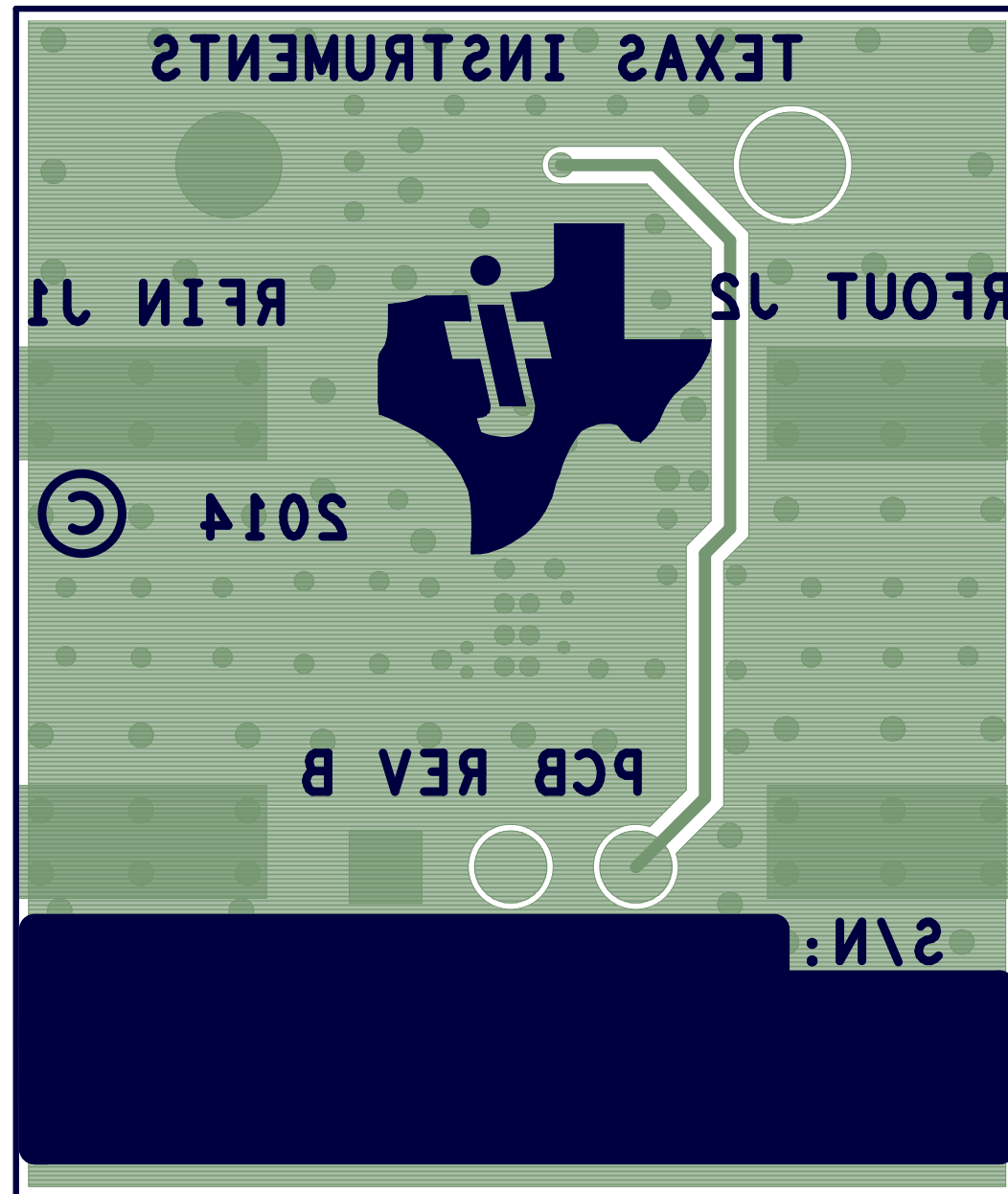
TEXAS INSTRUMENTS  
 TRF37X7EVM  
 PCB REV B  
 SST



TEXAS INSTRUMENTS  
TRF37X7XVM  
PCB REV B  
LYR2 - GND1



TEXAS INSTRUMENTS  
TRF37X7EVM  
PCB REV B  
LYR3 - GND2



TEXAS INSTRUMENTS  
TRF37X7XEV  
PCB REV B  
SSB

D

- C

B

A

- 
- The diagram illustrates the cross-section of a 4-layer PCB. From top to bottom, the layers are:
  - Layer 1:** Copper Foil 0.5oz / Plate to 1.0oz min Layer 1
  - Layer 2:** Pre-preg 0.0097" (material)
  - Layer 3:** Core 0.0358" 1.0oz / 1.0oz Layer 2 & 3
  - Layer 4:** Pre-preg 0.0097" (material)
  - Layer 5:** Copper Foil 0.5oz / Plate to 1.0oz min Layer 4
 The core material is FR-370HR, and the prepreg material is also FR-370HR. The top and bottom surfaces are labeled TOP and BOTTOM respectively.

A