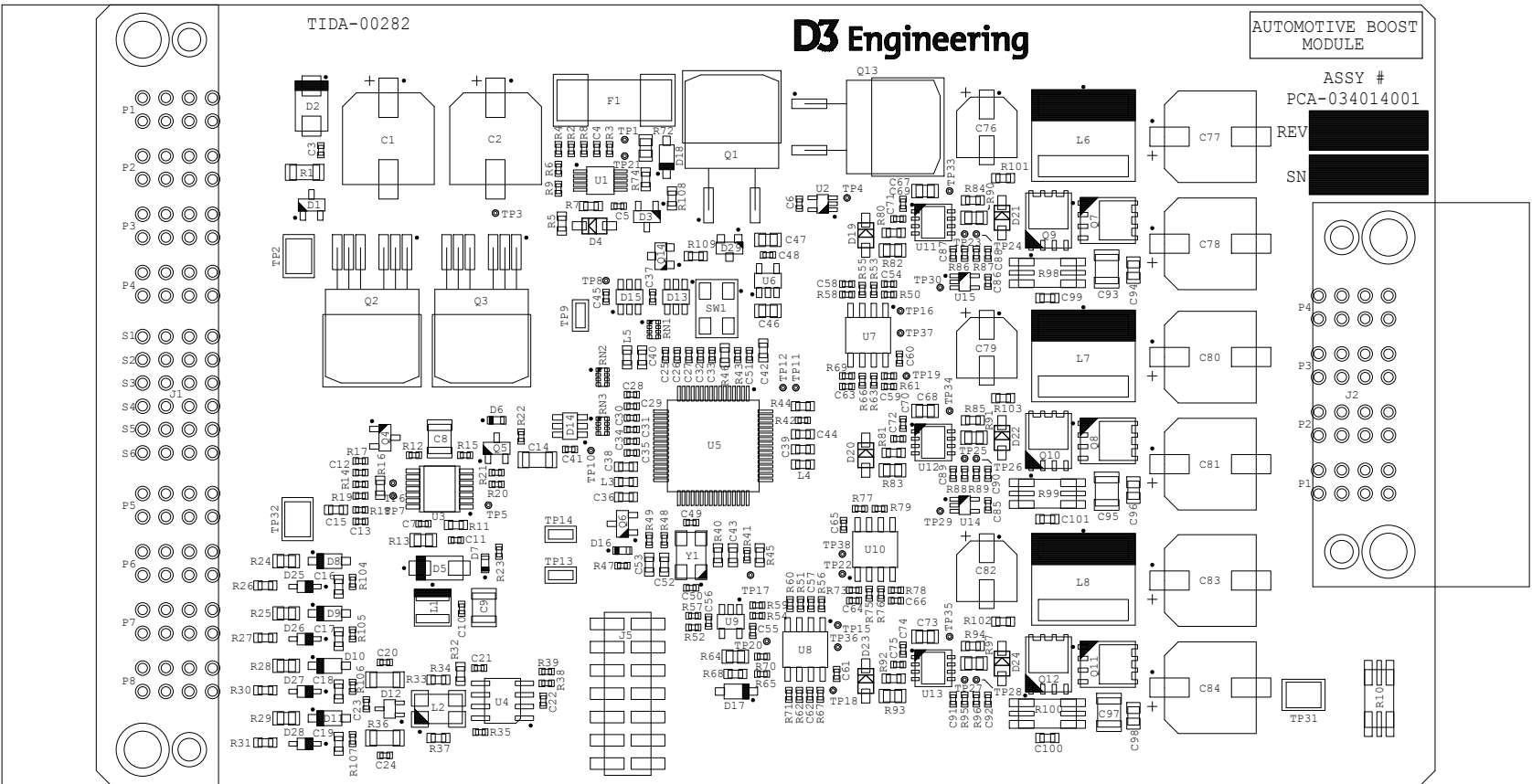


REVISION HISTORY

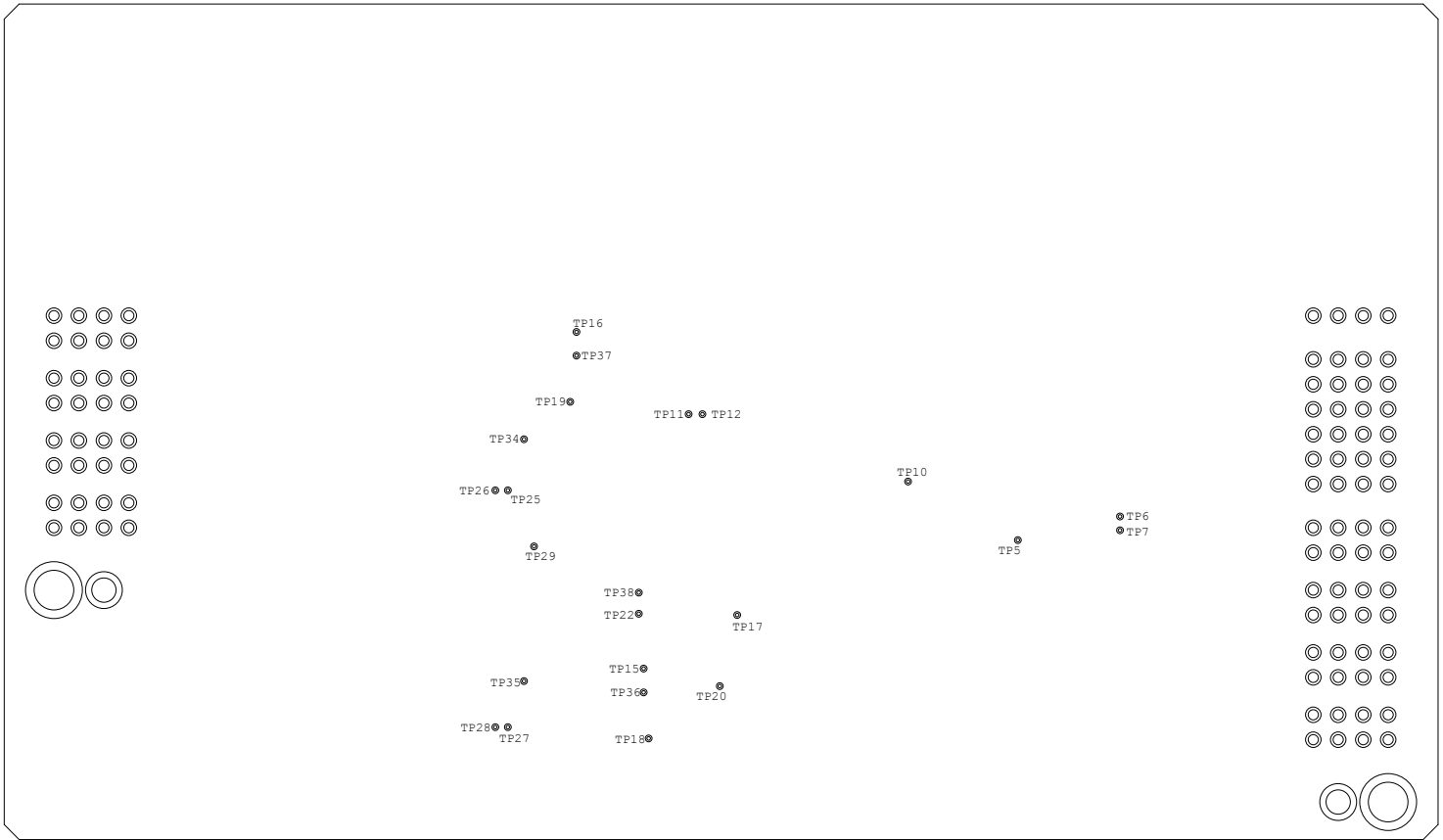
REV	DATE	COMMENTS	ENG
2	12/11/14	CHANGES INCORPORATED PER BUGS: 693 751 752 753 786 787	SN

NOTES :

1. WORKMANSHIP TO BE ROHS COMPLIANT AND IN ACCORDANCE WITH (IAW) THE REQUIREMENTS OF IPC-A-610 (LATEST ISSUE), CLASS 2.
2. MARK APPROPRIATE REVISION LEVEL AND SERIAL NUMBER IN AREA PROVIDED USING THE FOLLOWING CONVENTION FOR SERIAL NUMBER: YYWWNNN USE MATERIALS AND METHODS AS OUTLINED IN MIL-STD-130 (LATEST ISSUE), SECTION 4.0, GENERAL REQUIREMENTS.
3. SILKSCREEN DOTS ON DIODES INDICATE CATHODE PIN.
4. ROUGH BOARD EDGES RESULTING FROM DE-PANELIZATION SHALL BE SANDED SMOOTH.



COMPONENTS VIEWED FROM TOP SIDE



VIEWED FROM BOTTOM SIDE (NO COMPONENTS ON BOTTOM SIDE)

D3

TITLE ASSY, PCB,
AUTOMOTIVE BOOST
MODULE

DWG B SIZE	ITEM NO. PCA-034014001
------------------	---------------------------

D3 ENGINEERING
1057 E Henrietta Road
Rochester, NY 14623

DRAWN BY:		APPROVED BY:		DATE:	
B.NOEL		S.NANDURI		09/08/14	
CAGE CODE 3V6D5		SCALE X/X		SHT 1 OF 1	