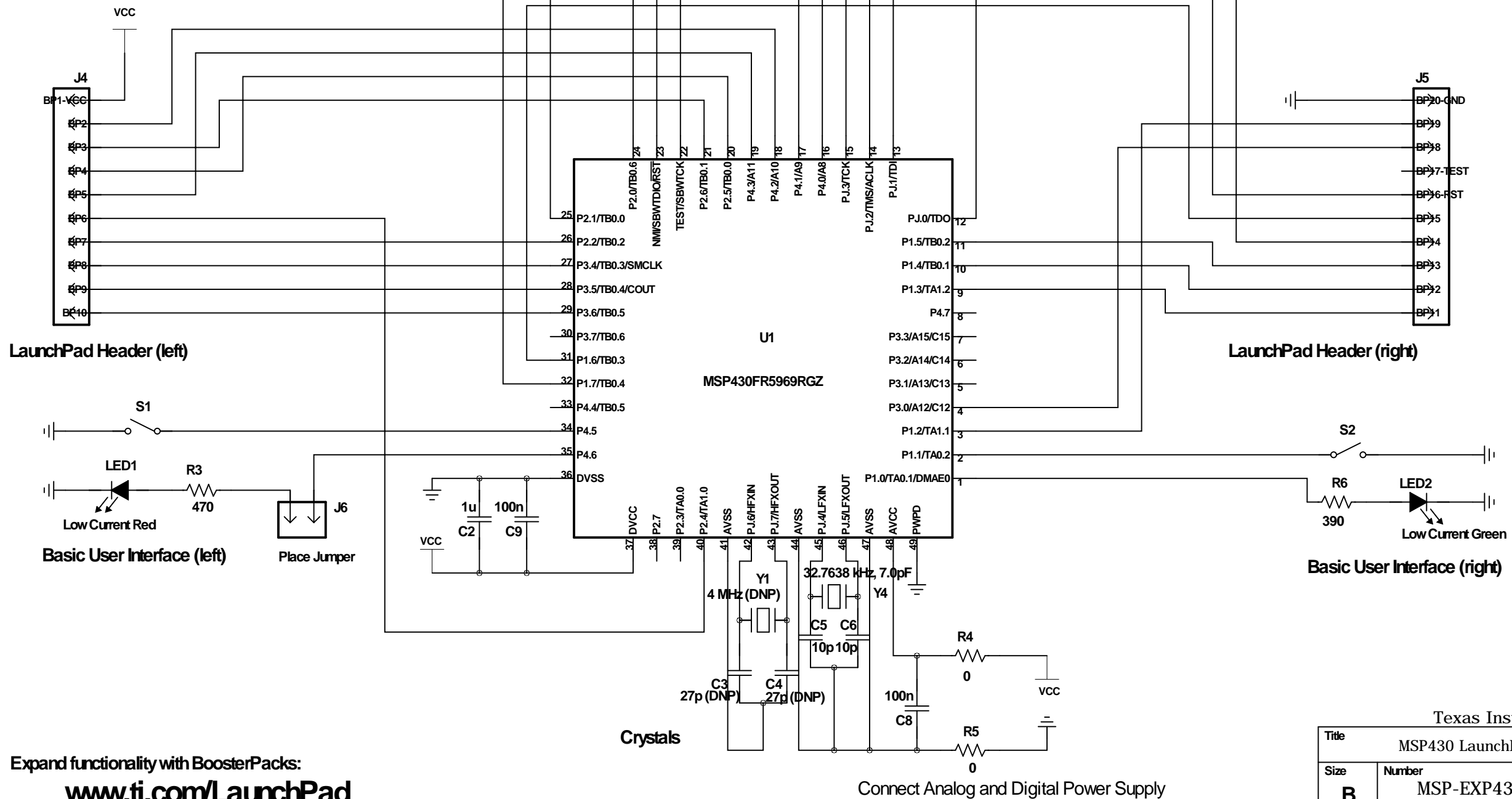
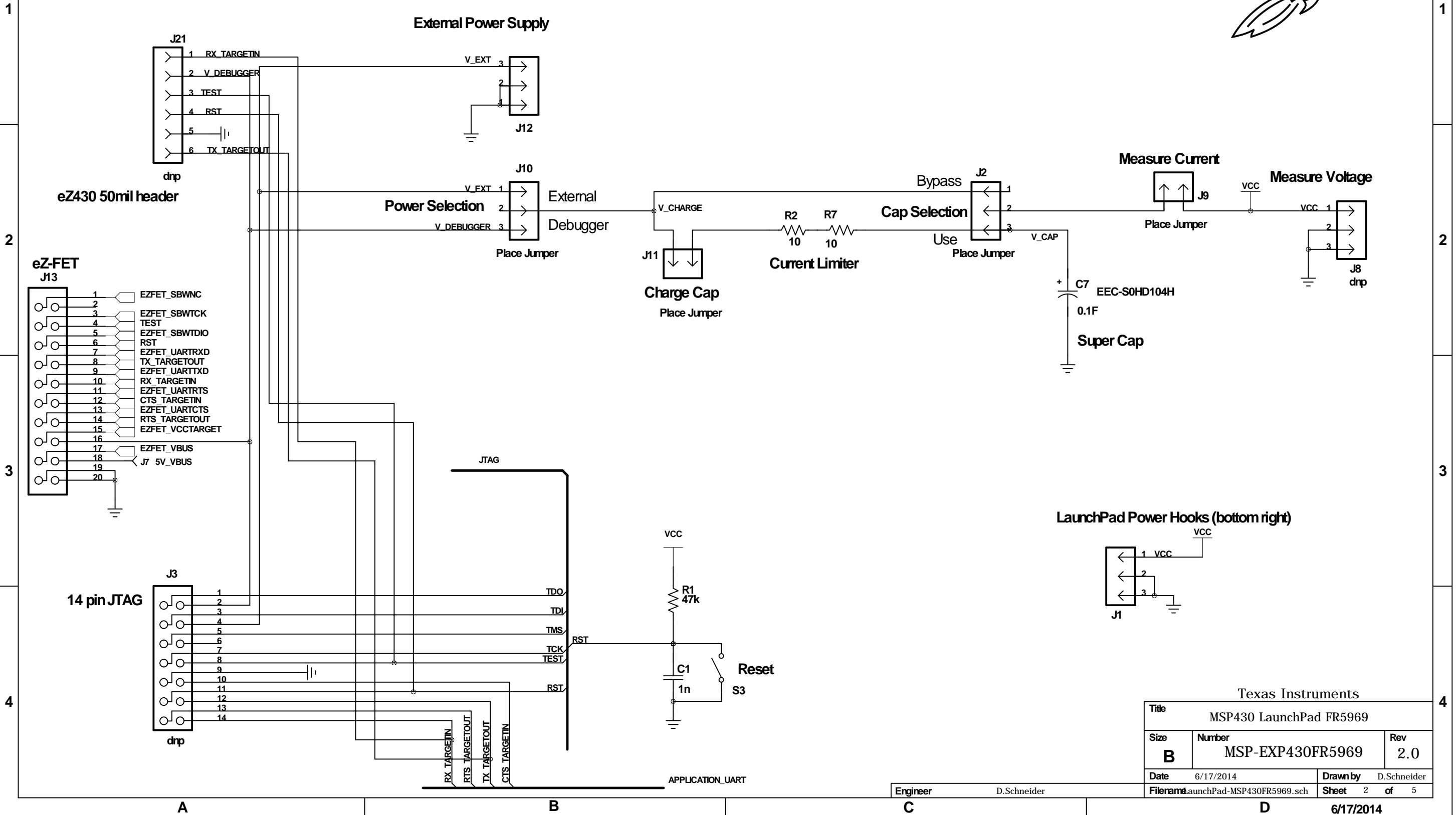
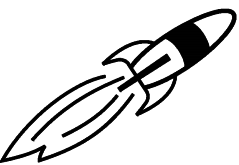


# MSP430FR5969 LaunchPad

## Main MCU



# Main MCU - Debugger and Power Connections

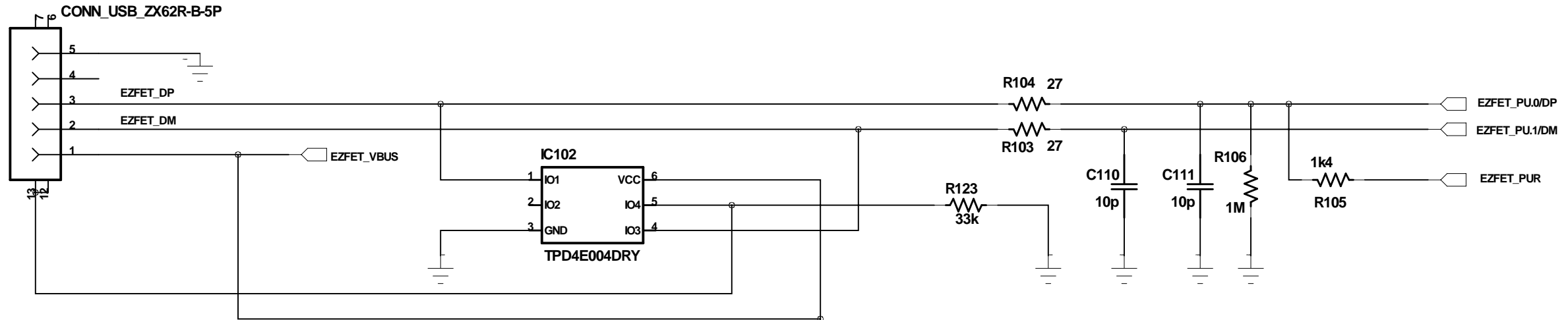


Texas Instruments		
Title MSP430 LaunchPad FR5969		
Size B	Number MSP-EXP430FR5969	Rev 2.0
Date 6/17/2014	Drawn by D.Schneider	
Filename launchPad-MSP430FR5969.sch	Sheet 2	of 5

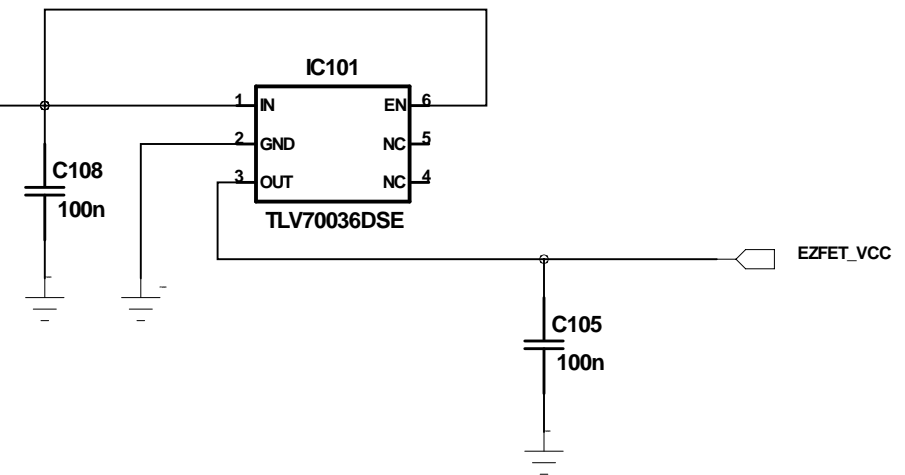
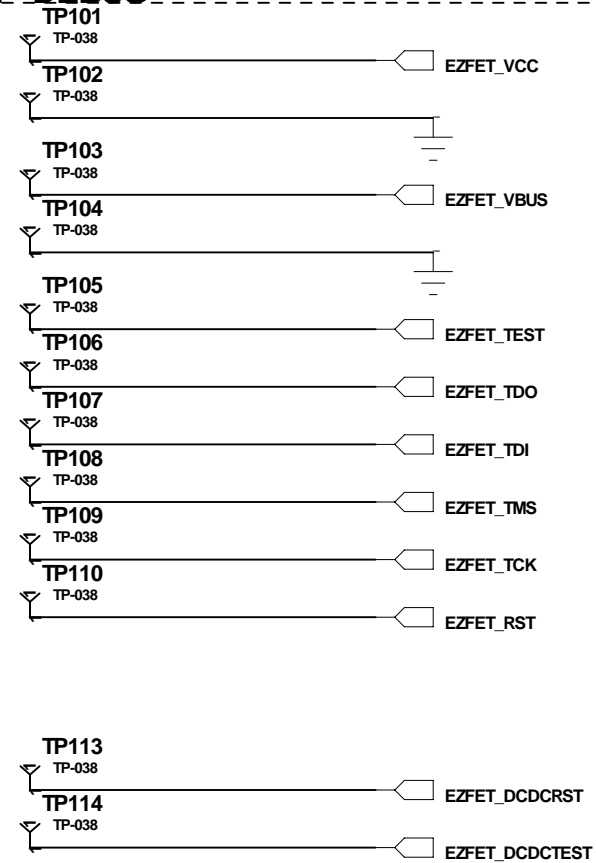
6/17/2014

# eZ-FET - USB Interface and Power Supply

## eZ-FET Rev1.2



### ezFET - DEBUG



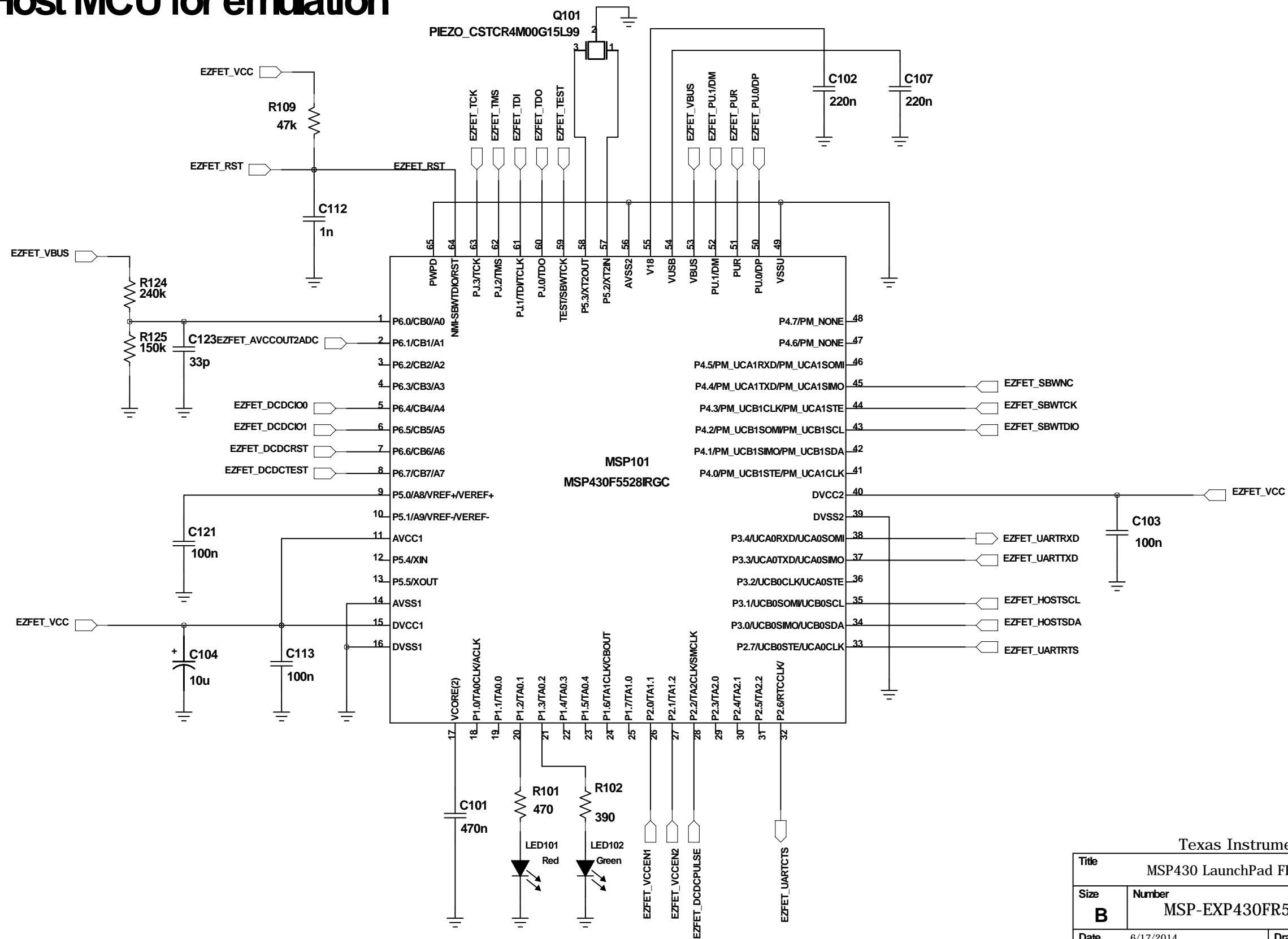
Texas Instruments		
MSP430 LaunchPad FR5969		
Size	Number	Rev
B	MSP-EXP430FR5969	2.0
Date	6/17/2014	Drawn by D.Schneider
Filename	LaunchPad-MSP430FR5969.sch	Sheet 3 of 5

Engineer D.Schneider

6/17/2014

# eZ-FET - Host MCU for emulation

## eZ-FET Rev1.2



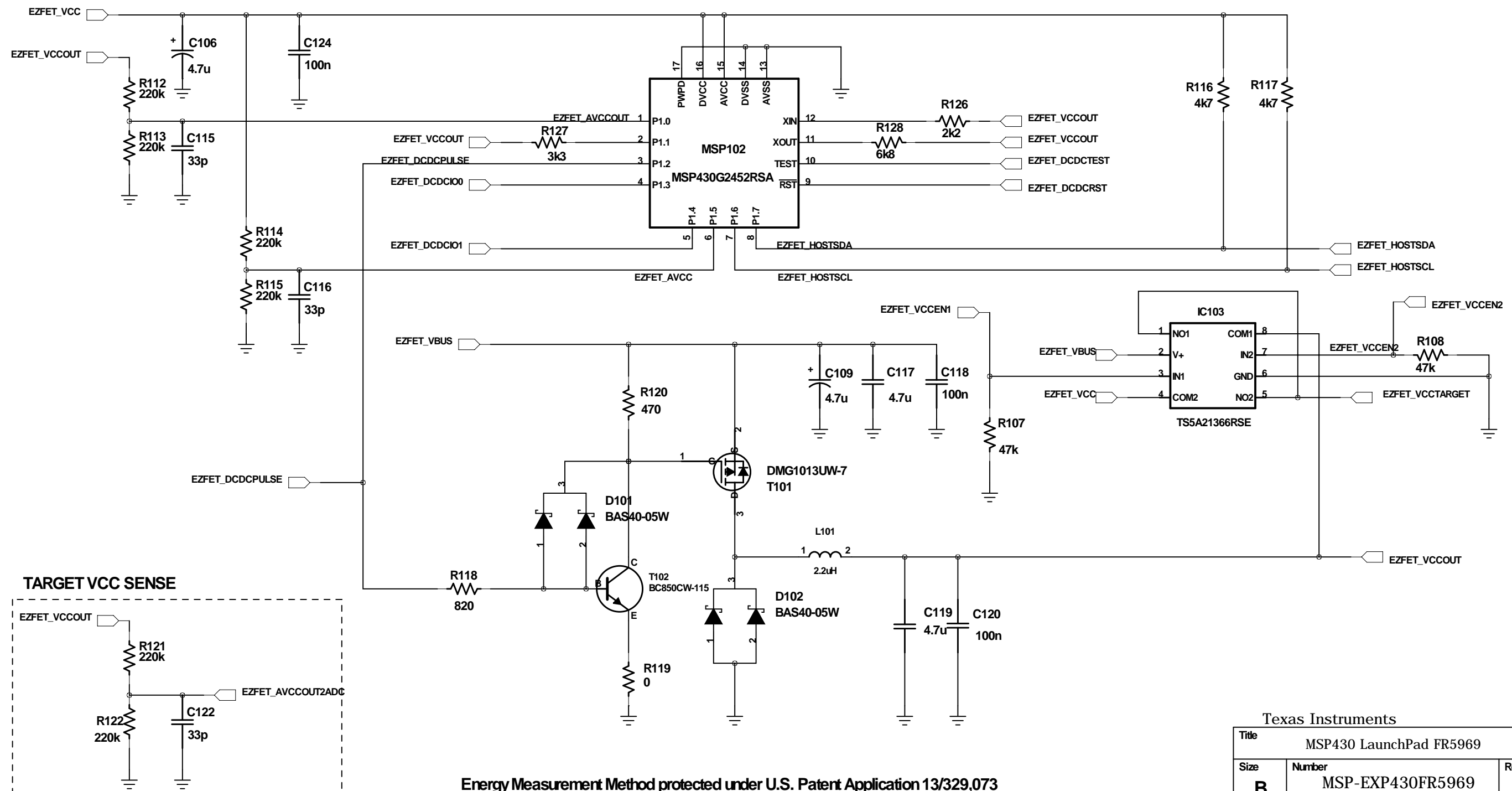
Texas Instruments		
MSP430 LaunchPad FR5969		
Size B	Number MSP-EXP430FR5969	Rev 2.0
Date 6/17/2014	Drawn by D.Schneider	
Filename LaunchPad-MSP430FR5969.sch	Sheet 4	of 5

Engineer D.Schneider

6/17/2014

# eZ-FET - MCU controlled DCDC converter

## eZ-FET Rev1.2



Texas Instruments

Title		
MSP430 LaunchPad FR5969		
Size	Number	Rev
B	MSP-EXP430FR5969	2.0
Date	6/17/2014	Drawn by D.Schneider
Filename	LaunchPad-MSP430FR5969.sch	Sheet 5 of 5

6/17/2014