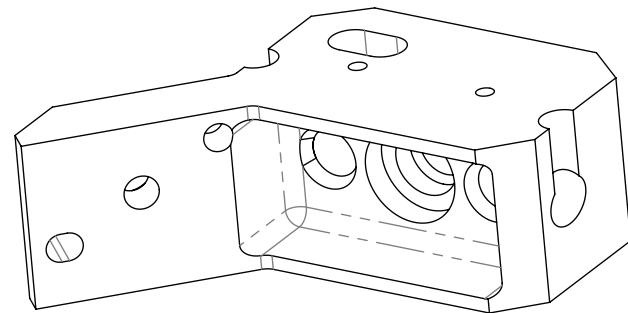
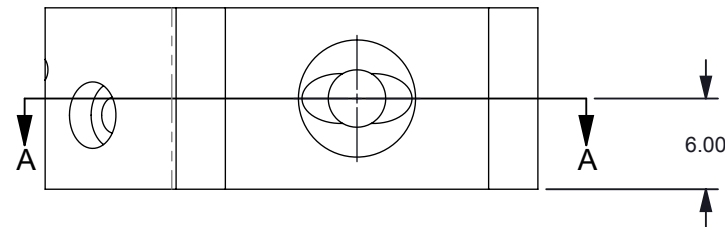
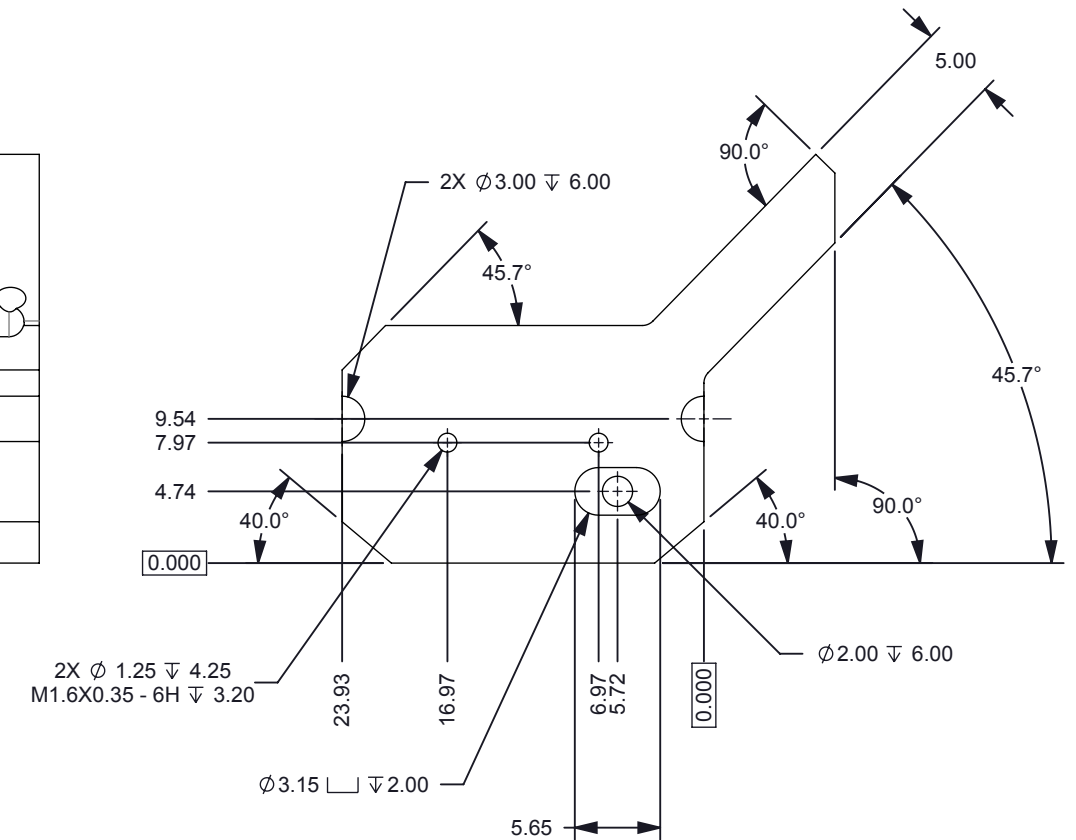
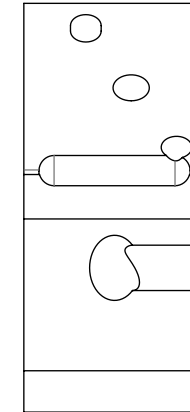
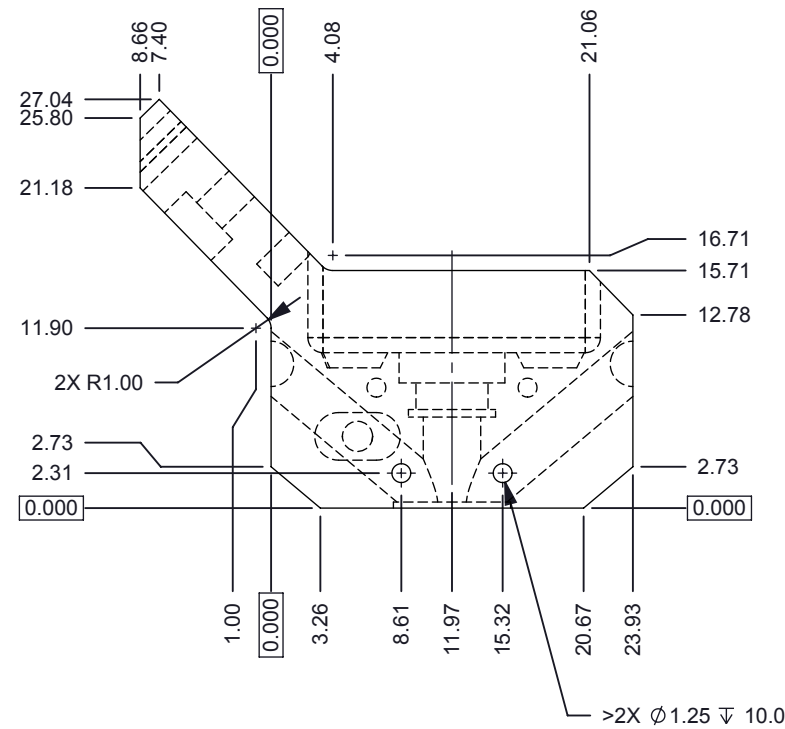
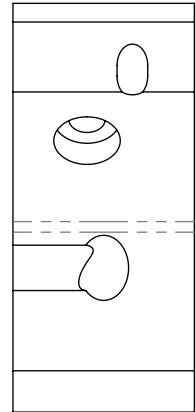
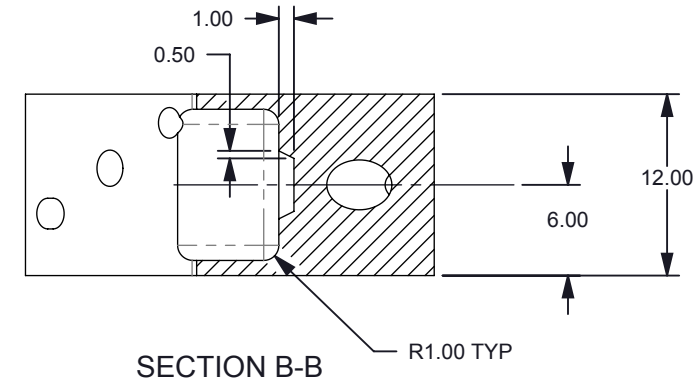
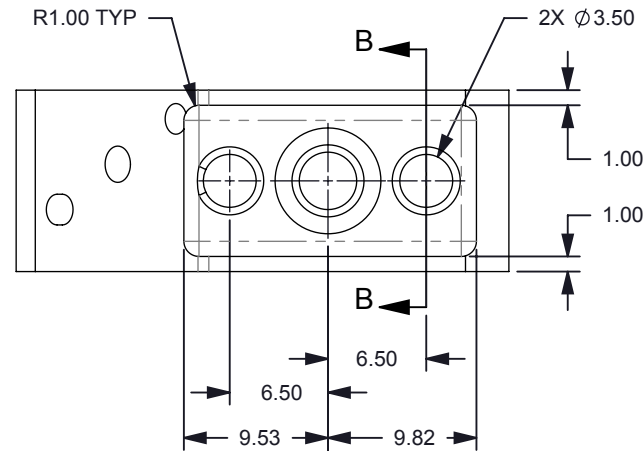



NOTES: UNLESS OTHERWISE SPECIFIED:

1. MATERIAL: 6061-T6 ALUMINUM
2. DO NOT BEAD BLAST. TYPICAL ALL SURFACES
3. FINISH: ANOPLATE ANOBLACK EC PROCESS.  
ALTERNATE BLACK ANODIZING PROCESSES  
NOT CONSIDERED AN EQUIVALENT

© COPYRIGHT 2014 TEXAS INSTRUMENTS  
UNPUBLISHED, ALL RIGHTS RESERVED

TS D	REVISIONS			
	REV	DESCRIPTION	DATE	BY
	A	INITIAL RELEASE	9/9/2014	RDR



		<p><b>UNLESS OTHERWISE SPECIFIED</b></p> <ul style="list-style-type: none"><li>• DIMENSIONS ARE IN MILLIMETERS</li><li>• TOLERANCES: ANGLES ±1° 2 PLACE DECIMALS ±0.25 1 PLACE DECIMALS ±0.50</li><li>• DIMENSIONAL LIMITS APPLY BEFORE PROCESSES</li><li>• INTERPRET DIMENSIONS IN ACCORDANCE WITH ASME Y14.5M-1994</li><li>• REMOVE ALL BURRS AND SHARP EDGES</li><li>• PARENTHETICAL INFO FOR REF ONLY</li></ul>	DWN R ROWE	DATE 9/8/2014	<div>TEXAS INSTRUMENTS</div>			
			Engr		CHASSIS, ILLUM. - 2 LAMP			
			CQE/QA					
			CM					
					NIRscan Nano			
			Apprvd	SIZE B	DWG NO 2513929	REV A		
				SCALE 2:1		SHEET 1 OF 2		
APPLICATION								

