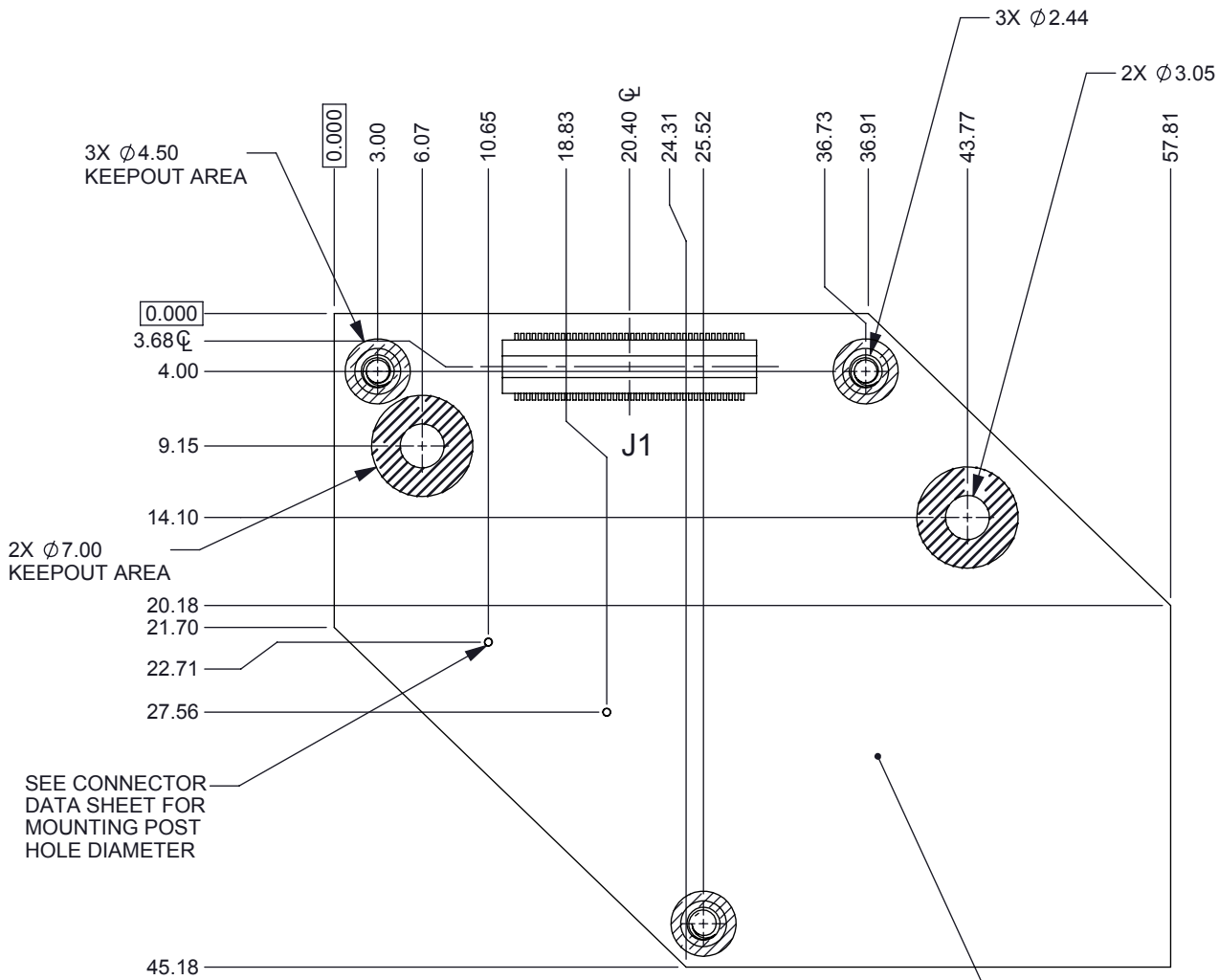


NOTES: UNLESS OTHERWISE SPECIFIED:
1. MATERIAL: FR-4

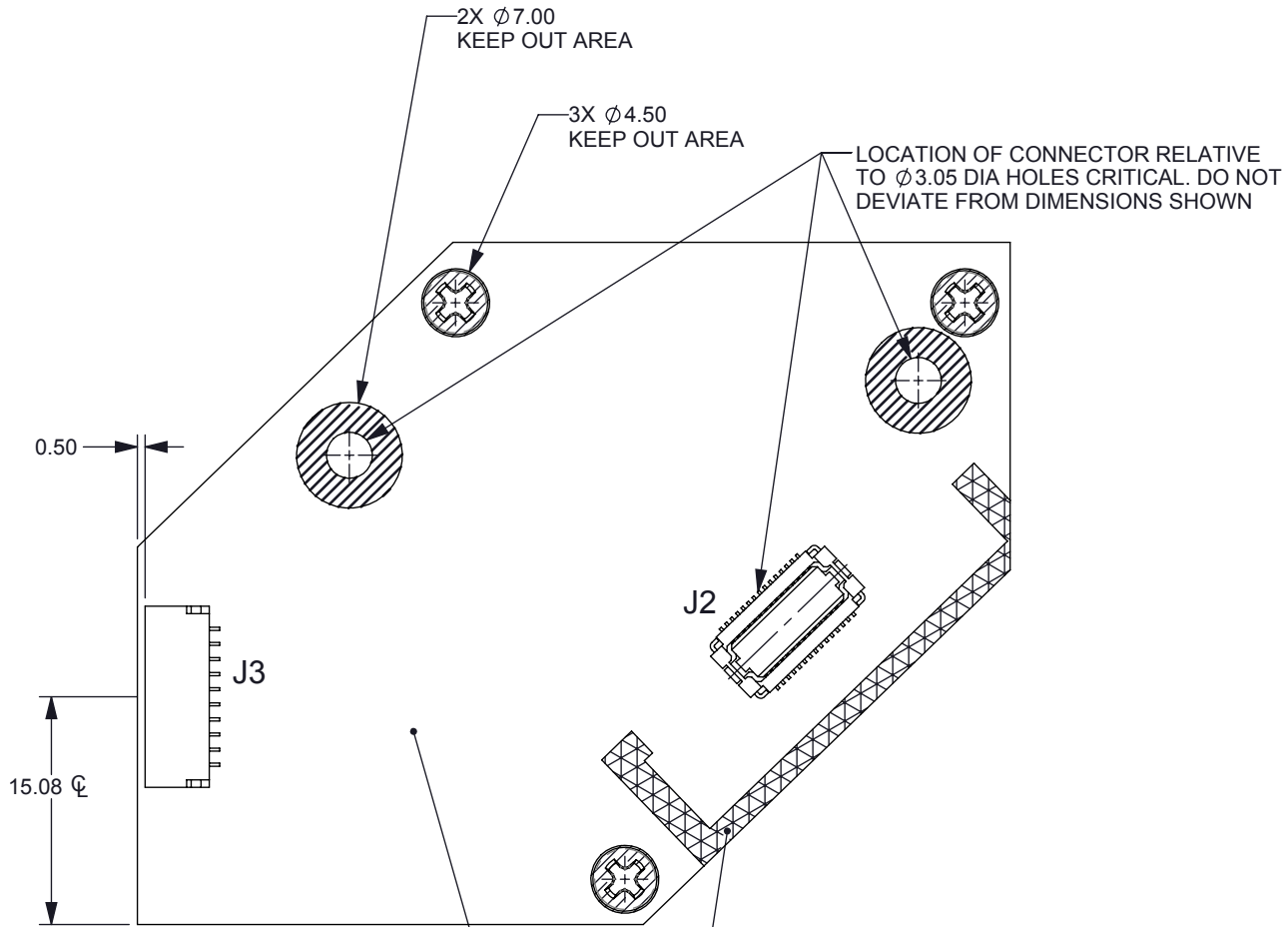
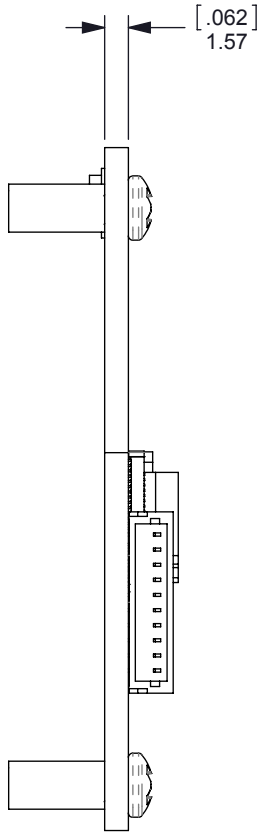
© COPYRIGHT 2014 TEXAS INSTRUMENTS
UNPUBLISHED, ALL RIGHTS RESERVED

REVISIONS			
REV	DESCRIPTION	DATE	BY
A	INITIAL RELEASE	XX/XX/XX	
B	REVISED FORM FACTOR FOR 2 STACKED BOARDS	7/29/2014	RDR
C	REMOVED MTG HOLE AND MOVED CONN	8/15/2014	RDR
D	CHANGED POSITION OF J1	8/19/2014	RDR



MAXIMUM COMPONENT HEIGHT
ON THIS SIDE OF BOARD IS 5.75MM.

NOTE: THIS SIDE OF THE DLPC150 BOARD FACES THE
TOP SIDE OF THE TIVA BOARD WITH A TOTAL AIR GAP
OF 6.00MM MAX. BETWEEN BOARDS.
COMPONENTS MOUNTED ON THE DLPC150 BOARD MUST
NOT INTERFERE WITH COMPONENTS PROTRUDING
FROM THE TIVA PCB.



MAXIMUM COMPONENT HEIGHT
ON THIS SIDE OF BOARD 6.0MM

THIS HATCHED AREA APPLIES TO THIS SIDE
ONLY AND DENOTES A KEEPOUT AREA FOR
COMPONENTS, LEADS, OR SOLDER PADS.
TRACES, VIAS, AND PLANES ARE ALLOWED.
REFER TO SUPPLIED DXF FILE FOR KEEPOUT
AREA SIZE AND PLACEMENT.



UNLESS OTHERWISE SPECIFIED

- DIMENSIONS ARE IN MILLIMETERS
- TOLERANCES: ANGLES $\pm 1^\circ$
2 PLACE DECIMALS ± 0.25
1 PLACE DECIMALS ± 0.50
- DIMENSIONAL LIMITS APPLY BEFORE PROCESSES
- INTERPRET DIMENSIONS IN ACCORDANCE WITH
ASME Y14.5M-1994
- REMOVE ALL BURRS AND SHARP EDGES
- PARENTHETICAL INFO FOR REF ONLY

DWN R ROWE	DATE
Engr	
CQE/QA	
CM	
Apprvd	



PCB SUB-ASSY, DLPC150
MECHANICAL FORM FACTOR

SIZE	DWG NO	REV
B	2141390	D
SCALE 2:1		SHEET 1 OF 1