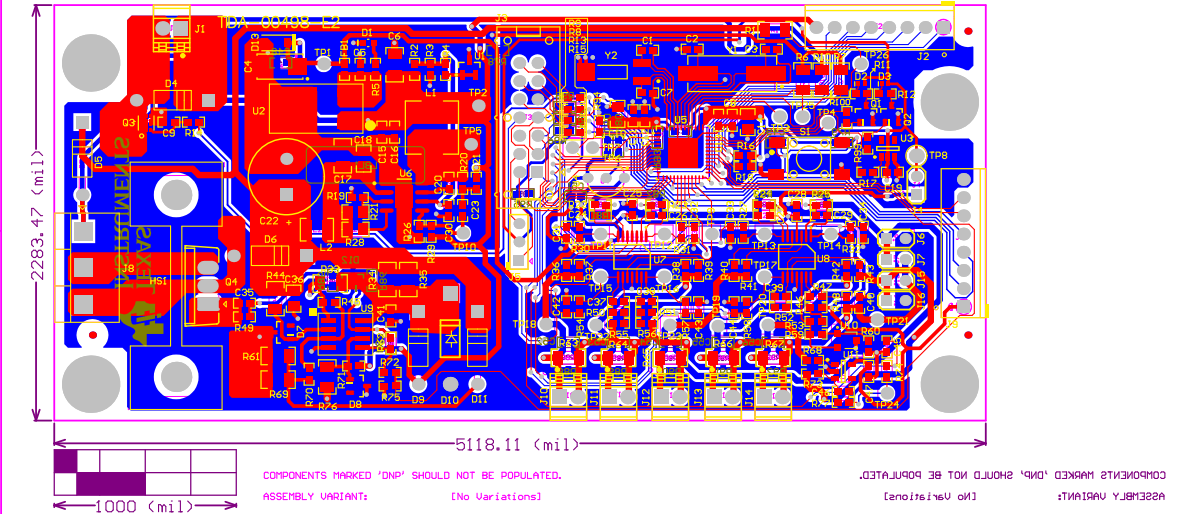


- 222 ■ Install label in silkscreened box after final wash. Text shall be 8 pt font. Text shall be per the Label Table in the PDF schematic.
- 221 ■ These assemblies are ESD sensitive, ESD precautions shall be observed.
- 223 ■ These assemblies must be clean and free free flux and all contaminants. Use of no clean flux is not acceptable.
- 224 ■ These assemblies must comply with workmanship standards IPC-A-610 Class 2, unless otherwise specified.



| | | | | | |
|-----------------------------------|---------------|-----------------------|-------------|-------------------|-------------------|
| ALL ARTWORK DERIVED FROM TOP SIDE | S3 | BOARD # | TI100600198 | REV: E2 | Not In Production |
| LAYER NAME = 86600198 | MCB/ACB FE_TU | GENERATED : 6/22/2015 | 3:30:43 PM | TEXAS INSTRUMENTS | |

Texas Instruments (TI) and/or its licensors do not warrant the accuracy or completeness of this specification or any information contained therein. TI and/or its licensors do not warrant that this design will meet the specifications, will be suitable for your application or fit for any particular purpose, or will be an implementation. TI and/or its licensors do not warrant that the design is production worthy. You should completely validate and test your design implementation to confirm the system functionality for your application.

| | | | | |
|---|---|---|---|---|
| 1 | 2 | 3 | 4 | 5 |
|---|---|---|---|---|