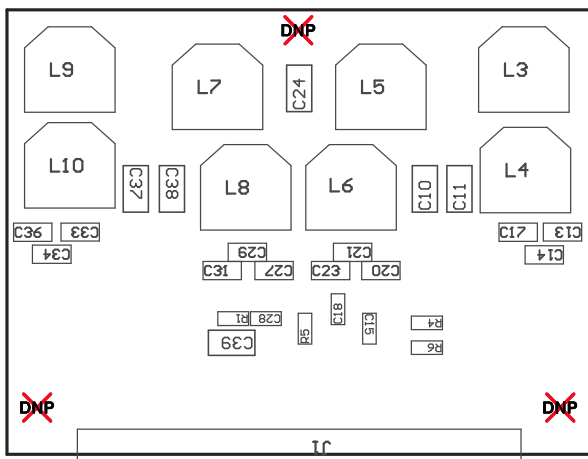


ZZ2 ■ These assemblies are ESD sensitive, ESD precautions shall be observed.

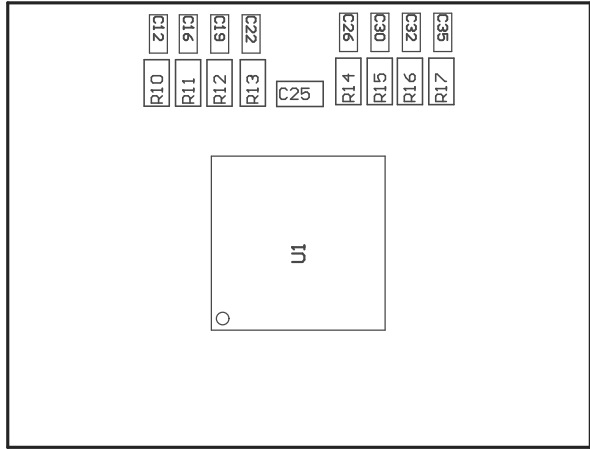
**ZZ3** ■ These assemblies must be clean and free from flux and all contaminants. Use of no clean flux is not acceptable.

ZZ4 ■ These assemblies must comply with workmanship standards IPC-A-610 Class 2, unless otherwise specified.



COMPONENTS MARKED 'DNP' SHOULD NOT BE POPULATED.  
ASSEMBLY VARIANT: 001

PCB VIEWED FROM TOP SIDE	BOARD #: TIDA-00573	REV: E2	SUN REV: Not In VersionControl
	TID #: 00573		
PLOT NAME = Top Assembly Drawing	GENERATED : 11/23/2015 12:46:48 PM		TEXAS INSTRUMENTS



COMPONENTS MARKED 'DNP' SHOULD NOT BE POPULATED.  
ASSEMBLY VARIANT: 001

PCB VIEWED FROM BOTTOM SIDE	BOARD #: TIDA-00573	REV: E2	SUN REV: Not In VersionControl
	TID #: 00573		
PLOT NAME = Bottom Assembly Drawing	GENERATED : 11/23/2015 12:46:49 PM		TEXAS INSTRUMENTS