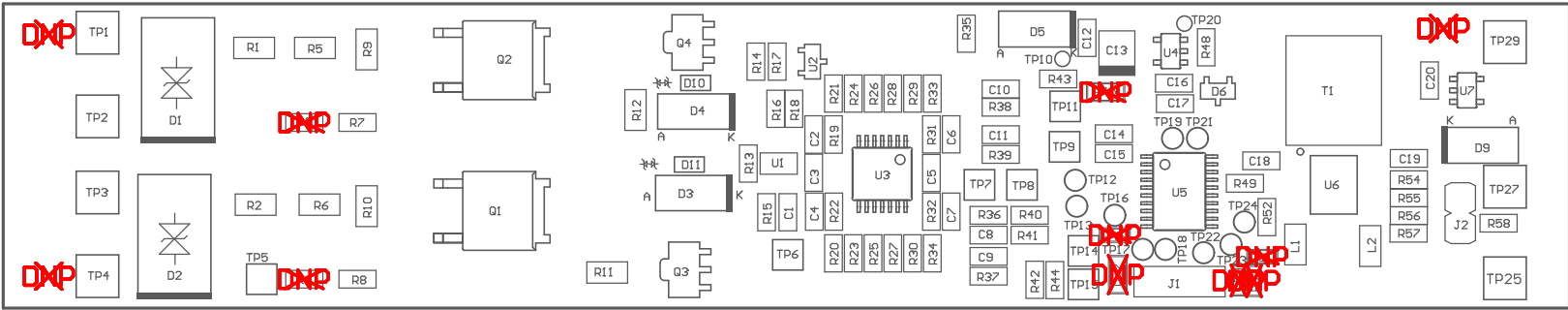
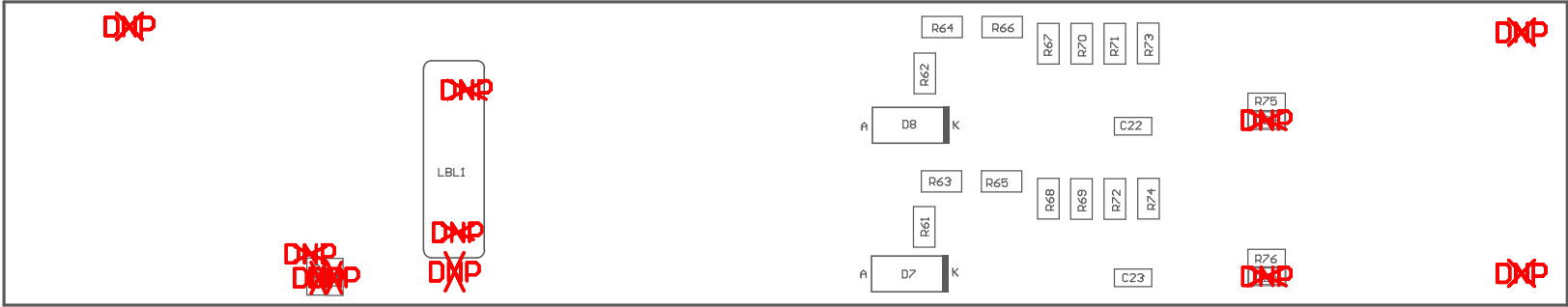


- ZZ1 ■ Install label in silkscreened box after final wash. Text shall be 8 pt font. Text shall be per the Label Table in the PDF schematic.
- ZZ2 ■ These assemblies are ESD sensitive, ESD precautions shall be observed.
- ZZ3 ■ These assemblies must be clean and free from flux and all contaminants. Use of no clean flux is not acceptable.
- ZZ4 ■ These assemblies must comply with workmanship standards IPC-A-610 Class 2, unless otherwise specified.





COMPONENTS MARKED 'DNP' SHOULD NOT BE POPULATED.

ASSEMBLY VARIANT: 001

PCB VIEWED FROM BOTTOM SIDE	BOARD #: TIDA-00809-BI	REV: E1	SUN REV: Not In VersionControl
LAYER NAME = M6 Assembly Bottom	TID #: TIDA-00809-BI IGNORE ->		
PLOT NAME = Bottom Assembly Drawing	GENERATED : 6/30/2016 3:00:15 PM	TEXAS INSTRUMENTS	