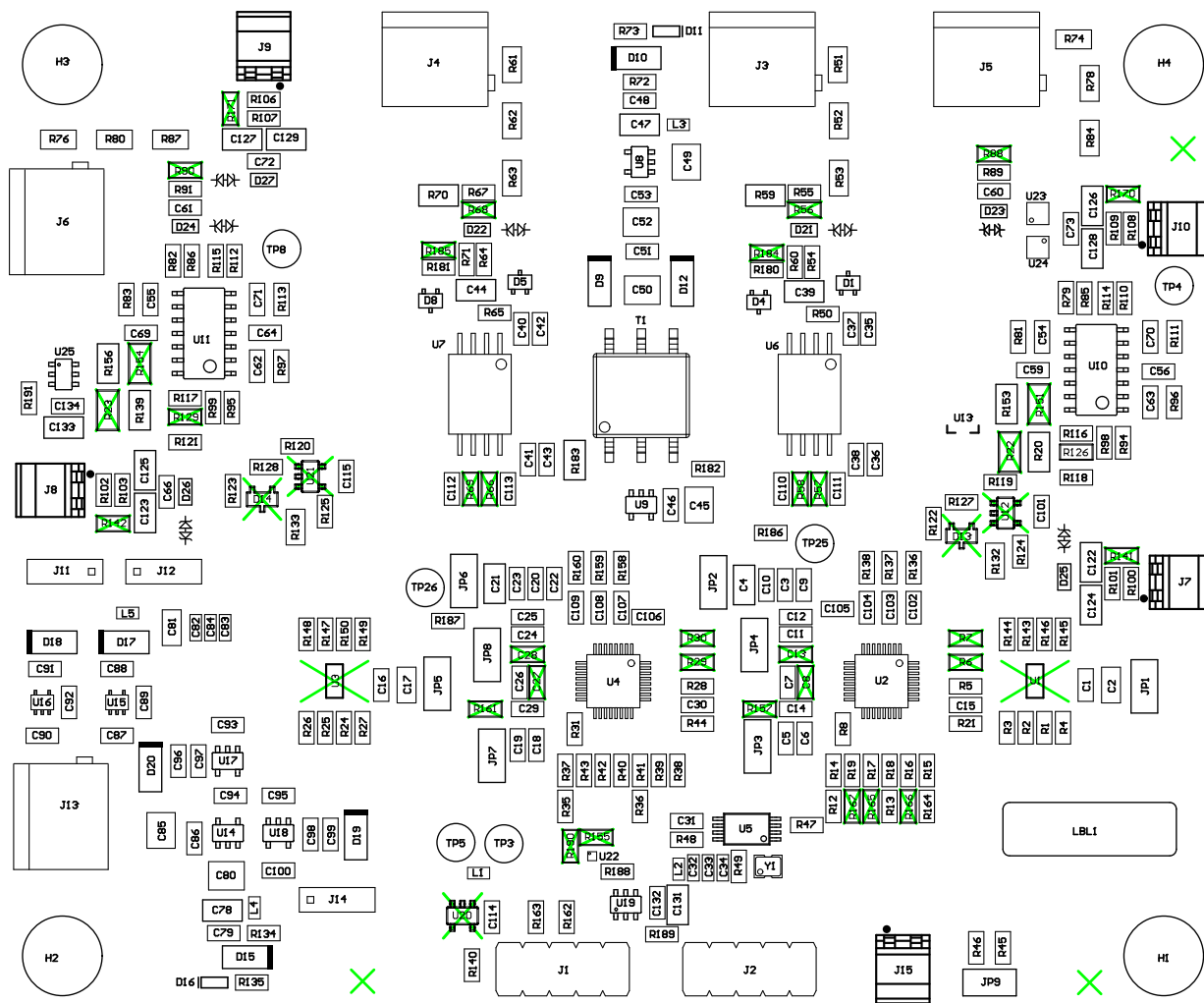


ALL ARTWORK VIEWED FROM TOP SIDE	BOARD #: TIDA-00835	REV: E2	SUN REV: Not In VersionControl
LAYER NAME = Top Paste	TID #: 00835		
PLOT NAME = Top Paste	GENERATED : 7/24/2018	3:31:36 PM	TEXAS INSTRUMENTS

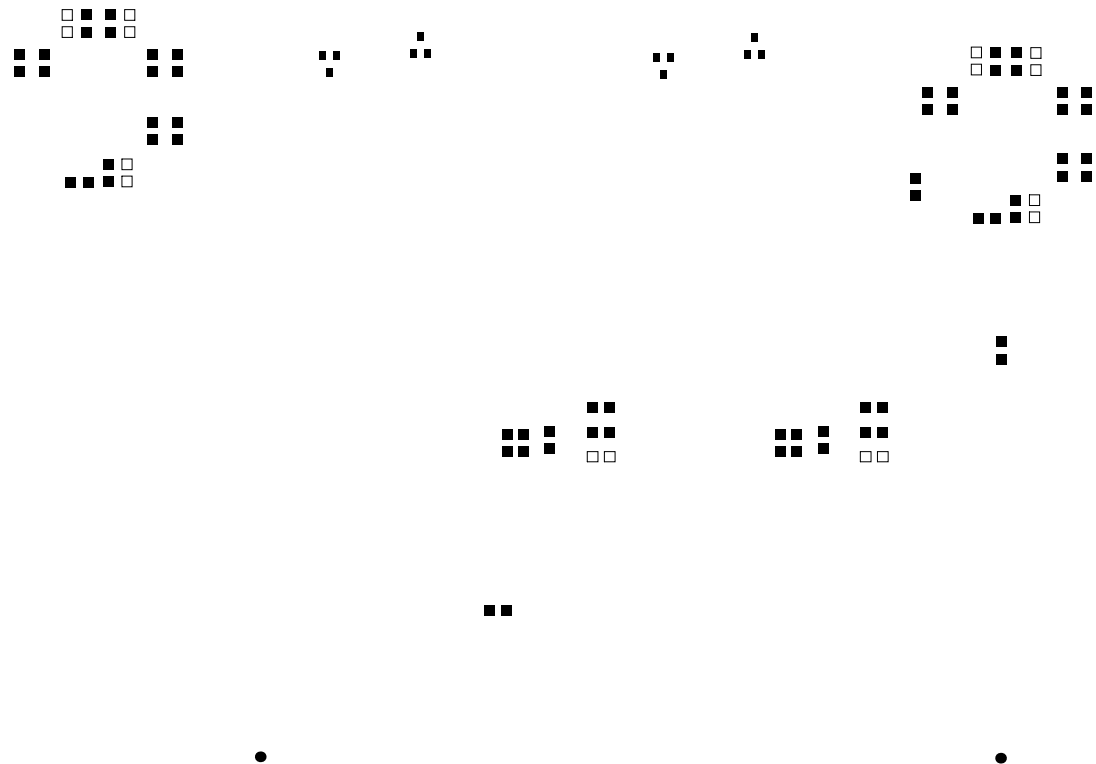
- Z21 ■ Install label in silkscreened box after final wash. Text shall be 8 pt font. Text shall be per the Label Table in the PDF schematic.
- Z22 ■ These assemblies are ESD sensitive, ESD precautions shall be observed.
- Z23 ■ These assemblies must be clean and free from flux and all contaminants. Use of no clean flux is not acceptable.
- Z24 ■ These assemblies must comply with workmanship standards IPC-A-610 Class 2, unless otherwise specified.



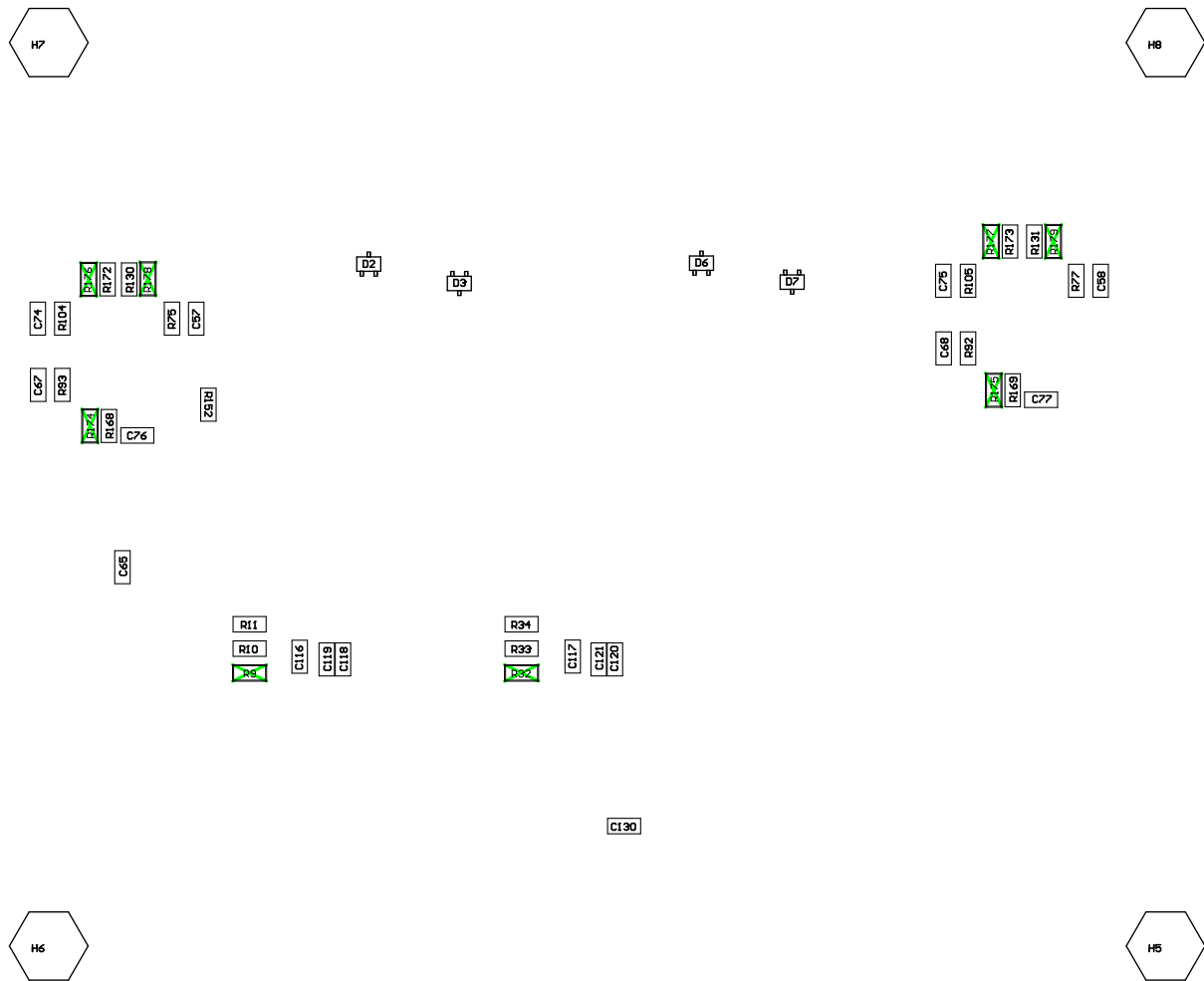
ASSEMBLY VARIANT:

001

PCB VIEWED FROM TOP SIDE	BOARD #:	TIDA-00835	REV:	E2	SUN REV:	Not In VersionControl
LAYER NAME =	MS Assembly Top					TID #: 00835
PLOT NAME =	Top Assembly Drawing		GENERATED :	7/24/2018	3:31:37 PM	TEXAS INSTRUMENTS

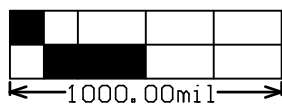
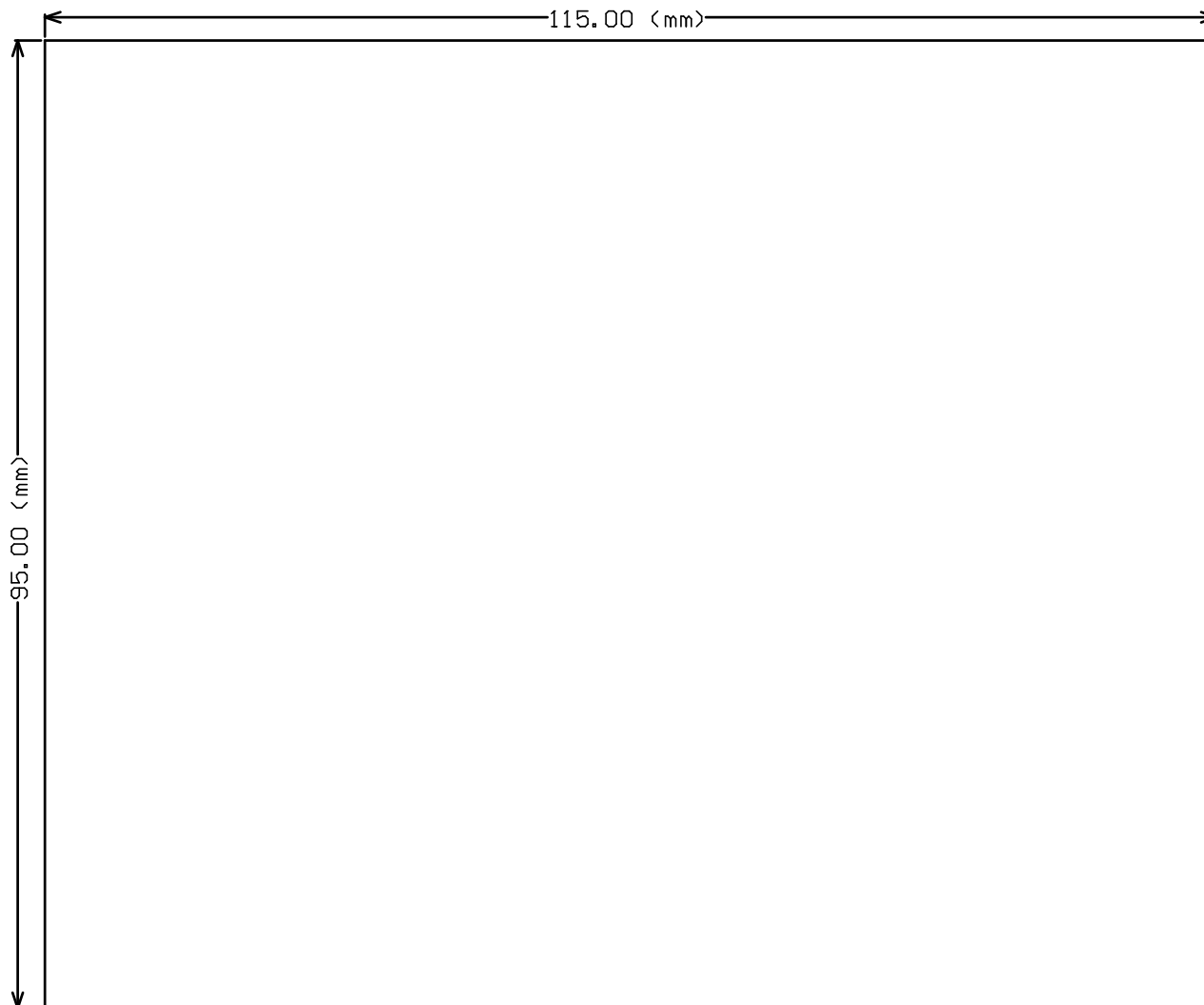


ALL ARTWORK VIEWED FROM TOP SIDE	BOARD #: TIDA-00835	REV: E2	SUN REV: Not In VersionControl
LAYER NAME = Bottom Paste	TID #: 00835		
PLOT NAME = Bottom Paste	GENERATED : 7/24/2018 3:31:37 PM	TEXAS INSTRUMENTS	



COMPONENTS MARKED 'DNP' SHOULD NOT BE POPULATED.
ASSEMBLY VARIANT: 001

PCB VIEWED FROM BOTTOM SIDE	BOARD #: TIDA-00835	REV: E2	SUN REV: Not In VersionControl
LAYER NAME = M6 Assembly bottom	TID #: 00835		
PLOT NAME = Bottom Assembly Drawing	GENERATED : 7/24/2018 3:31:38 PM	TEXAS INSTRUMENTS	



ALL ARTWORK VIEWED FROM TOP SIDE	BOARD #: TIDA-00835	REV: E2	SUN REV: Not In VersionControl
LAYER NAME =	TID #: 00835		
PLOT NAME = Board Outline	GENERATED : 7/24/2018 3:31:38 PM	TEXAS INSTRUMENTS	