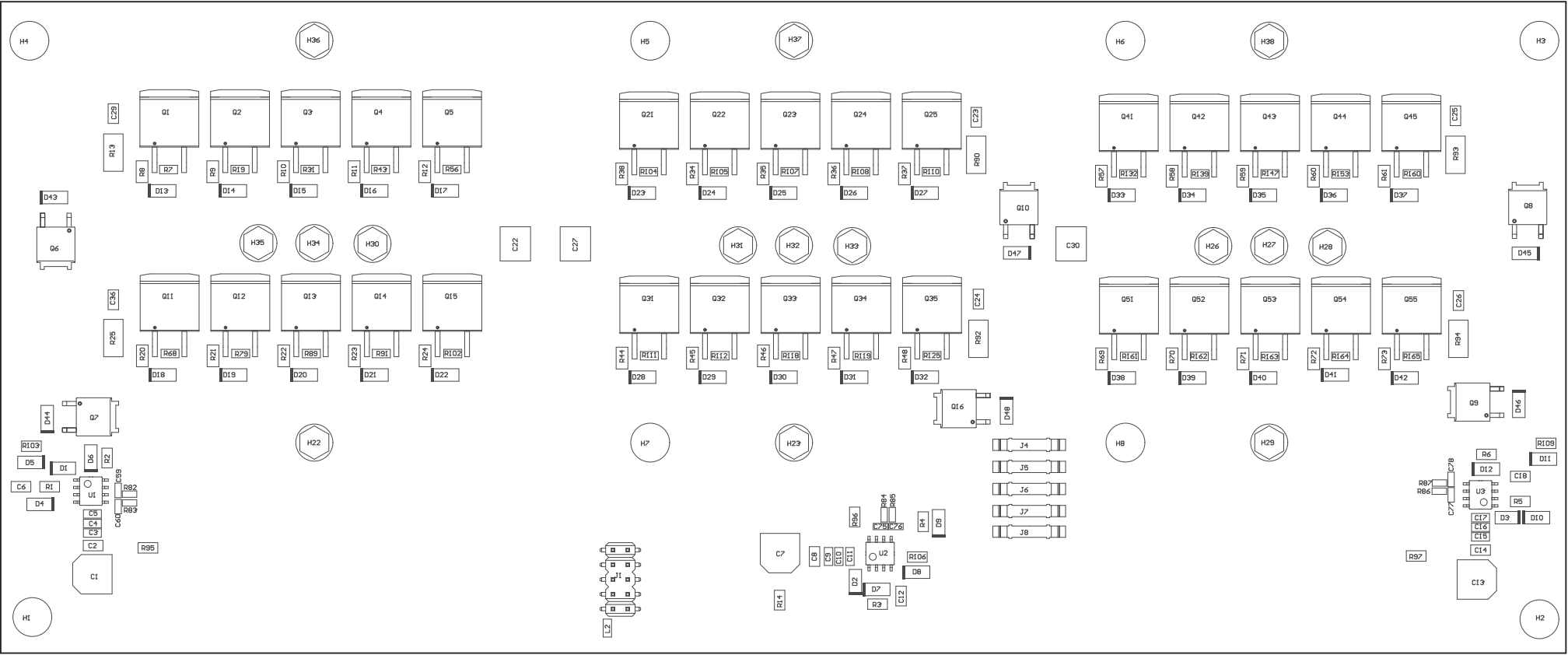


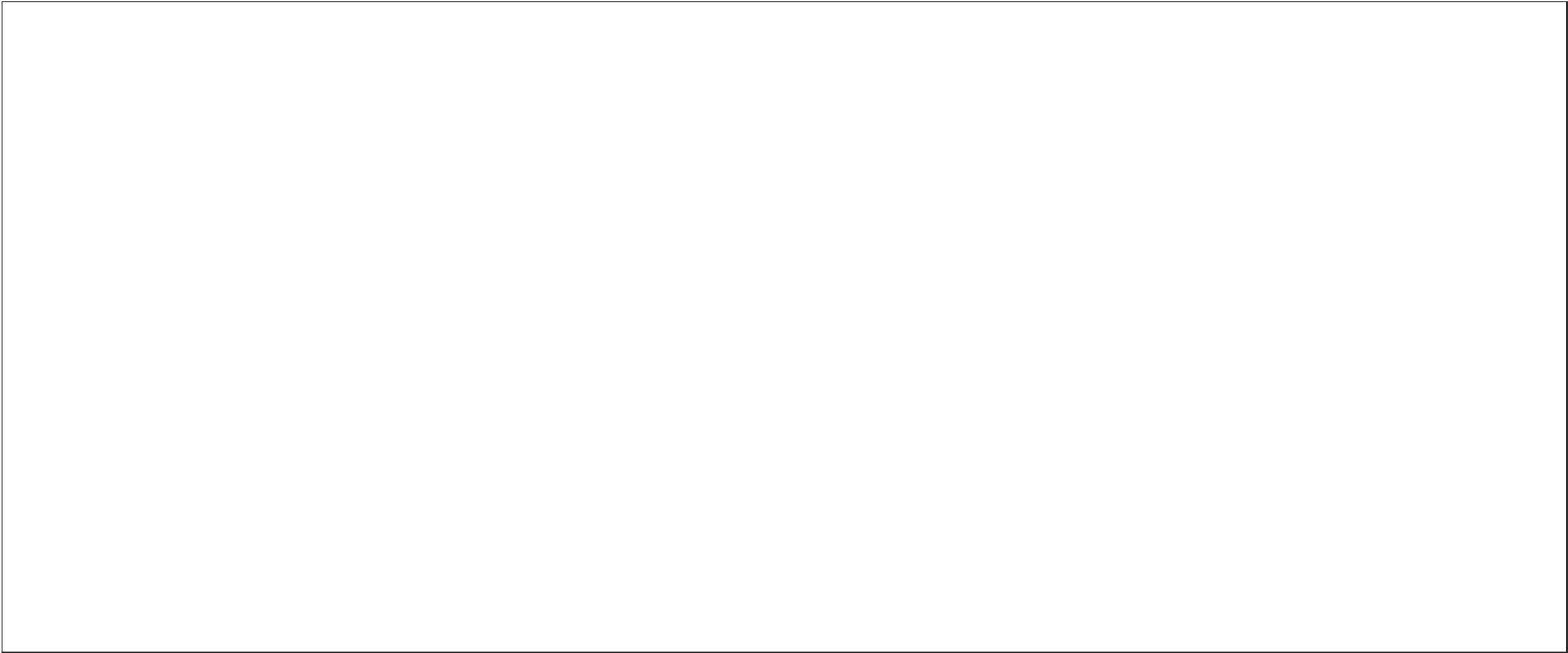
Z21 ■ These assemblies are ESD sensitive, ESD precautions shall be observed.
Z22 ■ These assemblies must be clean and free from flux and all contaminants. Use of no clean flux is not acceptable.
Z23 ■ These assemblies must comply with workmanship standards IPC-A-610 Class 2, unless otherwise specified.



COMPONENTS MARKED 'DNP' SHOULD NOT BE POPULATED.

ASSEMBLY VARIANT: [No Variations]

ALL artwork VIEWED FROM TOP SIDE	BOARD #:	TIDA-00364_P8	REV:	E1	SUN REV:	Not In VersionControl
LAYER NAME =	M5 Assembly Top	TID #:	TIDA-00364_P8			
Top Assembly Drawing	GENERATED :	9/28/2016	8:00:33 PM		TEXAS INSTRUMENTS	



COMPONENTS MARKED "DNP" SHOULD NOT BE POPULATED.

ASSEMBLY VARIANT: [No Variations]

PCB VIEWED FROM BOTTOM SIDE	BOARD #: TIDA-00364_PB	REV: E1	SUN REV:
LAYER NAME = M6 Assembly Bottom	TID #: TIDA-00364_PB	IGNORE ->	
PLOT NAME = Bottom Assembly Drawing	GENERATED : 9/28/2016	8:00:35 PM	