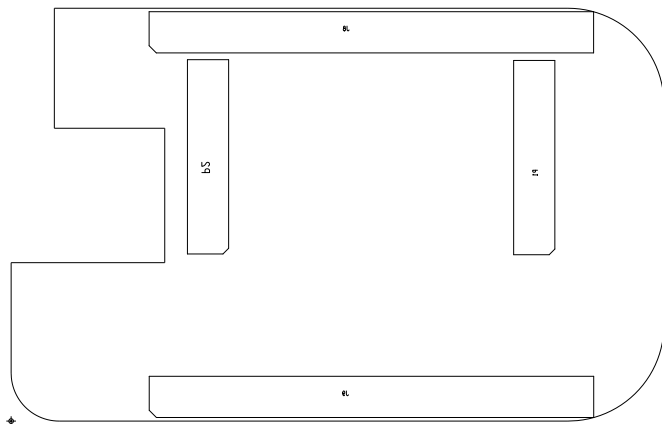


ASSEMBLY NOTES:

1. Connectors P1 and P2 should be mounted on Bottom side.The pins of the connectors should appear on the TOP side
2. Connectors J8 and J9 should be mounted on Bottom side.The long pins of the connectors should appear on the BOTTOM side



CUSTOMER: Texas Instruments			
BOARD NAME: BBB-LP ADAPTER	LAYER DESCRIPTION: Assembly-Bottom		
PROJECT NUMBER: WCS013	BOARD REV: A	RELEASE DATE: 2016-09-29	SHEET NUMBER: 2 of 2