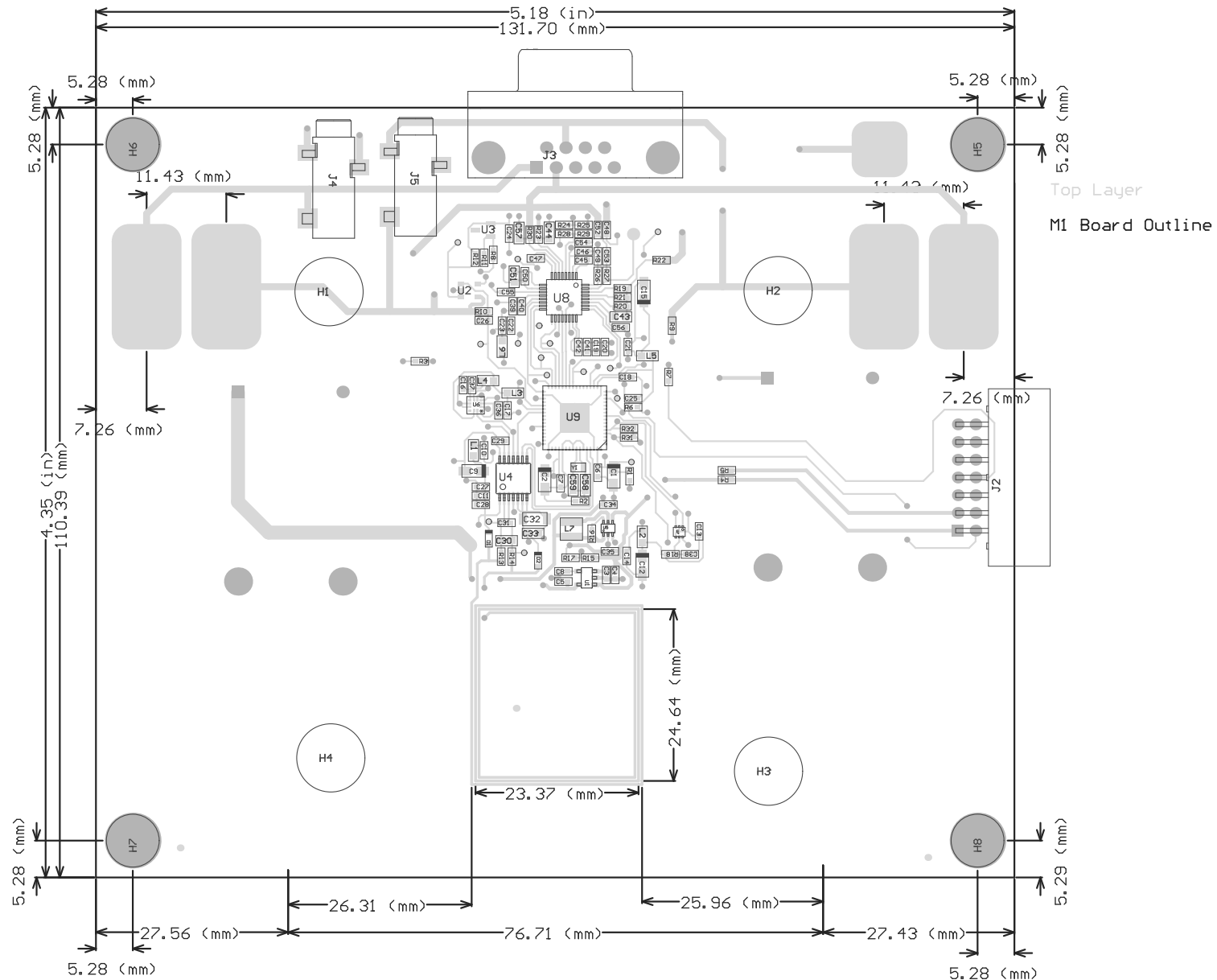


Z21 ■ Install label in silkscreened box after final wash. Text shall be 8 pt font. Text shall be per the Label Table in the PDF schematic.
 Z22 ■ These assemblies are ESD sensitive, ESD precautions shall be observed.
 Z23 ■ These assemblies must be clean and free from flux and all contaminants. Use of no clean flux is not acceptable.
 Z24 ■ These assemblies must comply with workmanship standards IPC-A-610 Class 2, unless otherwise specified.

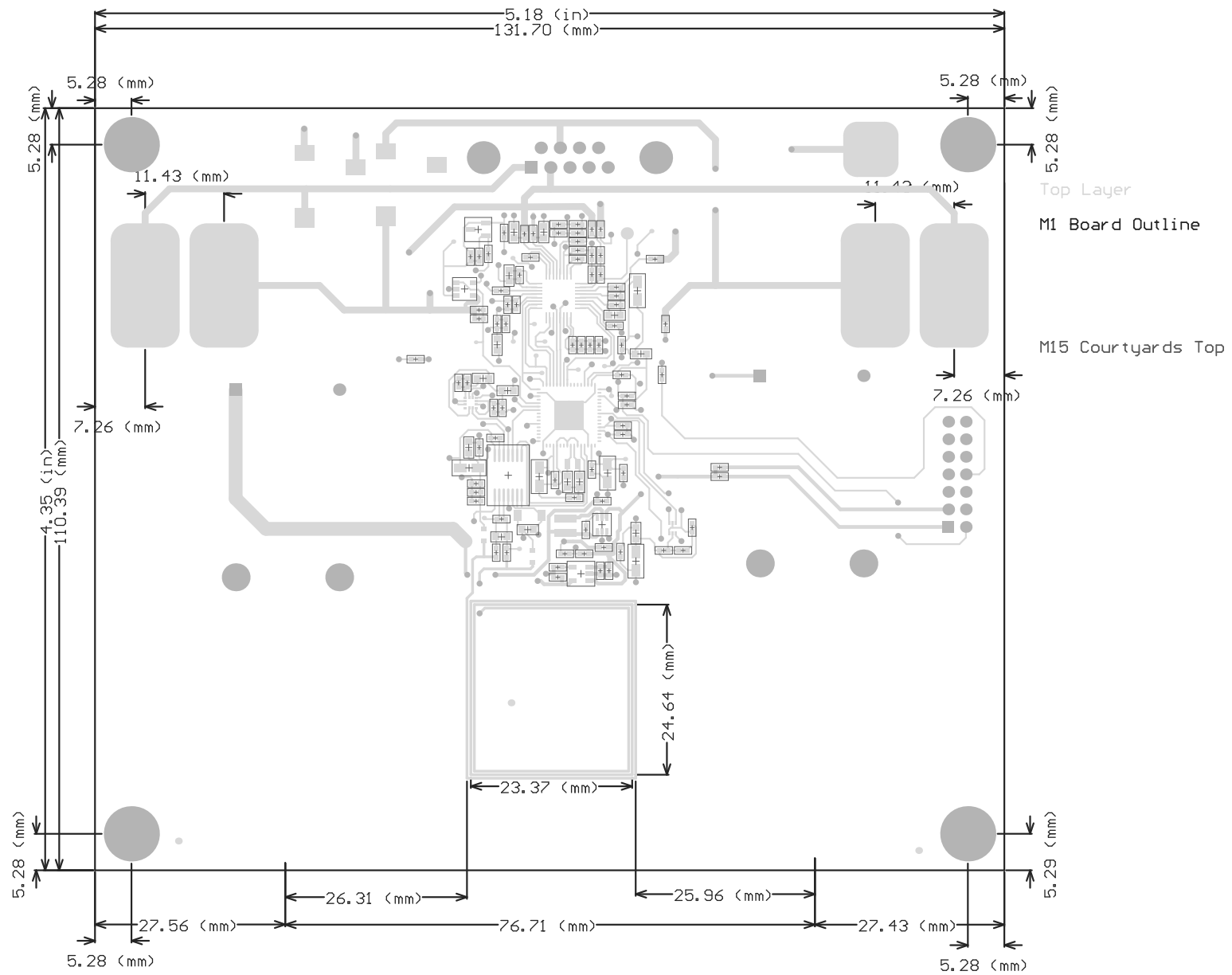


M2 Board Dimensions

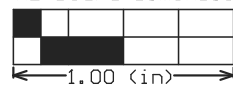


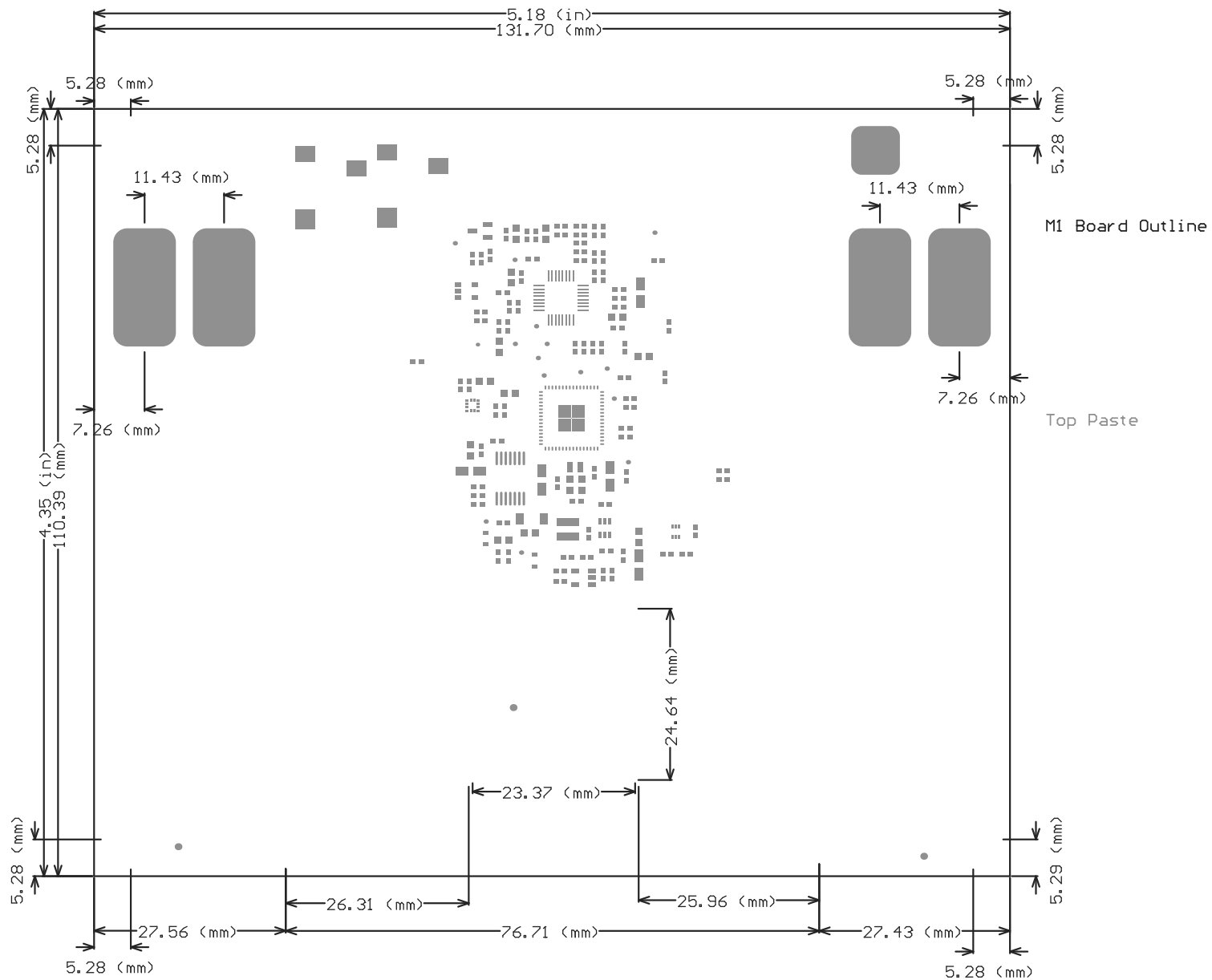
COMPONENTS MARKED 'DNP' SHOULD NOT BE POPULATED.
 ASSEMBLY VARIANT: MPBSM_Project_FR4

PCB VIEWED FROM TOP SIDE	BOARD #:	REV: 002	SUN REV: Not In VersionControl
IGNORE ->			
PLOT NAME = TIDM-1CHP-DTECT-CO-Mechanical	GENERATED : 5/11/2016 2:44:10 PM	TEXAS INSTRUMENTS	

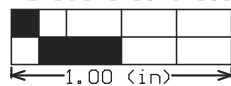


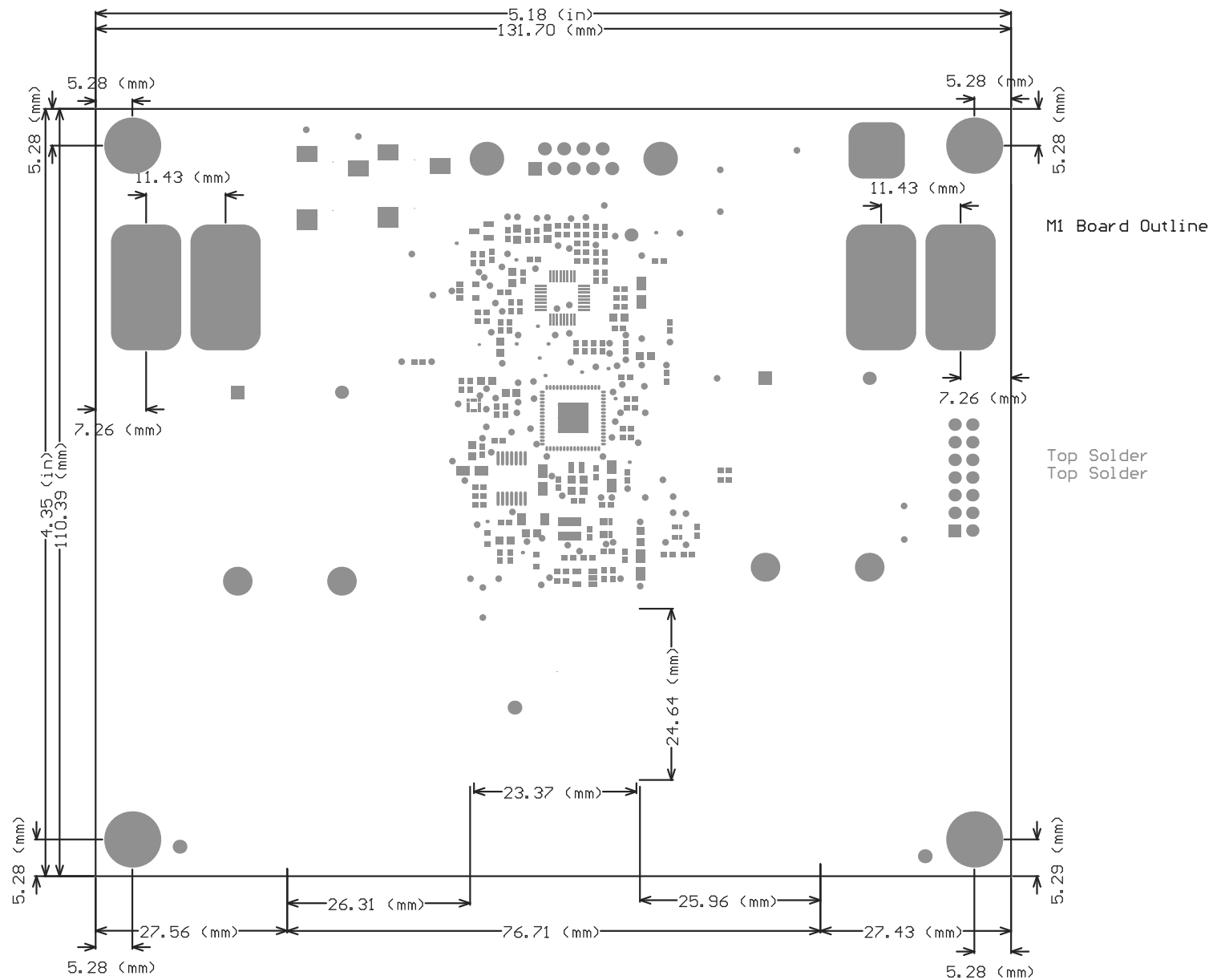
M2 Board Dimensions



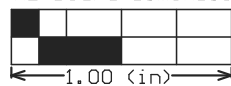


M2 Board Dimensions

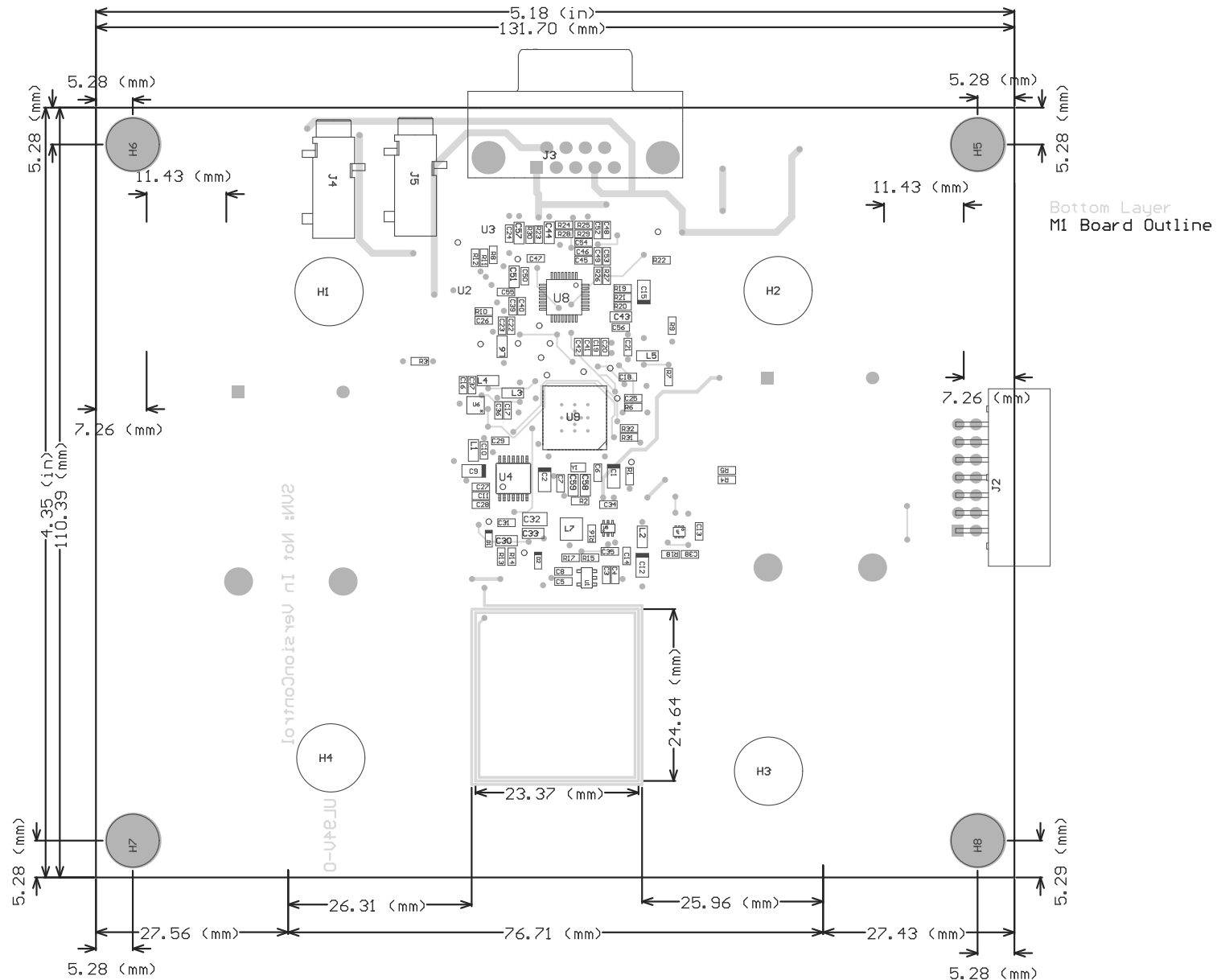




M2 Board Dimensions



Z21 ■Install label in silkscreened box after final wash. Text shall be 8 pt font. Text shall be per the Label Table in the PDF schematic.
Z22 ■These assemblies are ESD sensitive, ESD precautions shall be observed.
Z23 ■These assemblies must be clean and free from flux and all contaminants. Use of no clean flux is not acceptable.
Z24 ■These assemblies must comply with workmanship standards IPC-A-610 Class 2, unless otherwise specified.

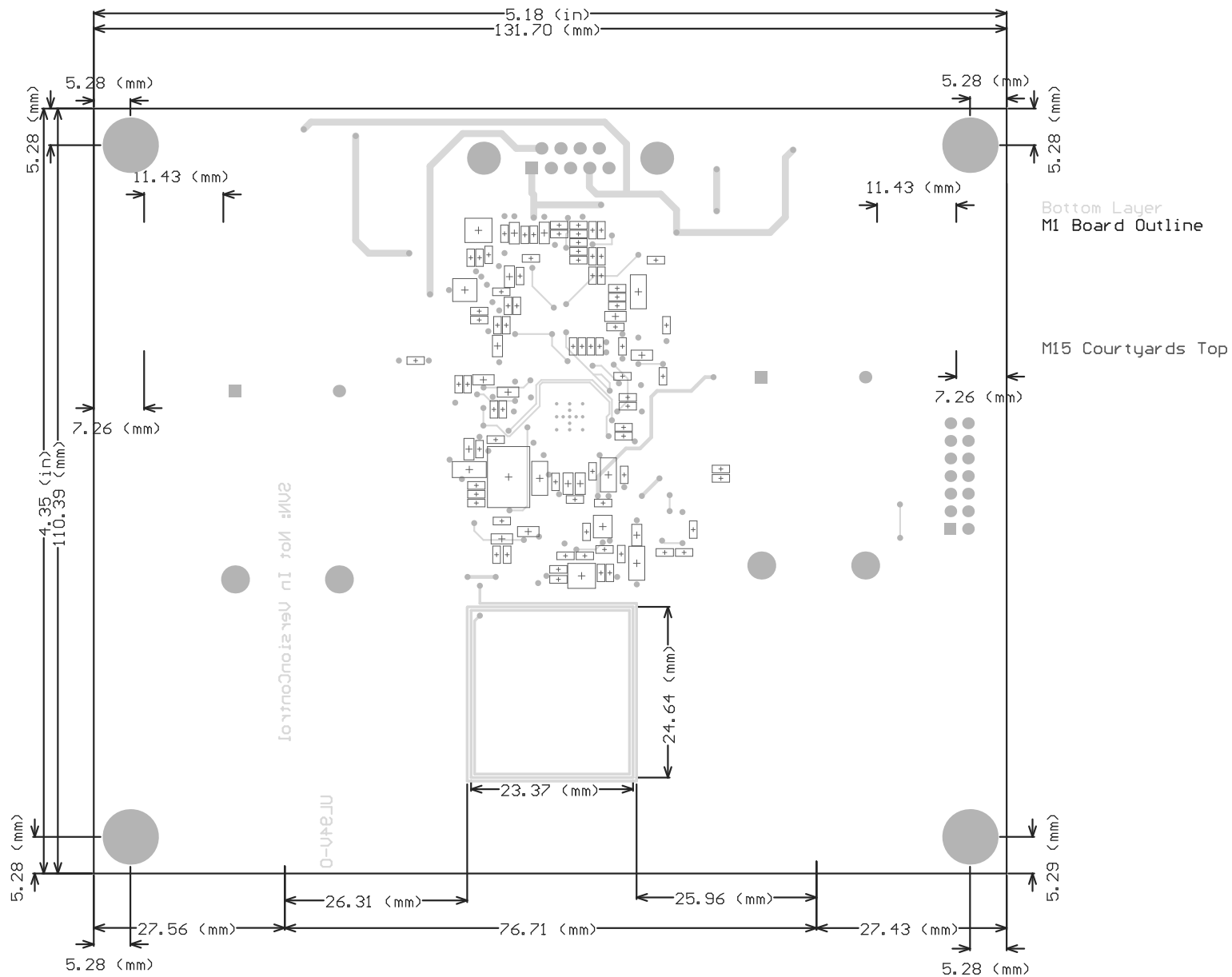


M2 Board Dimensions

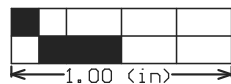


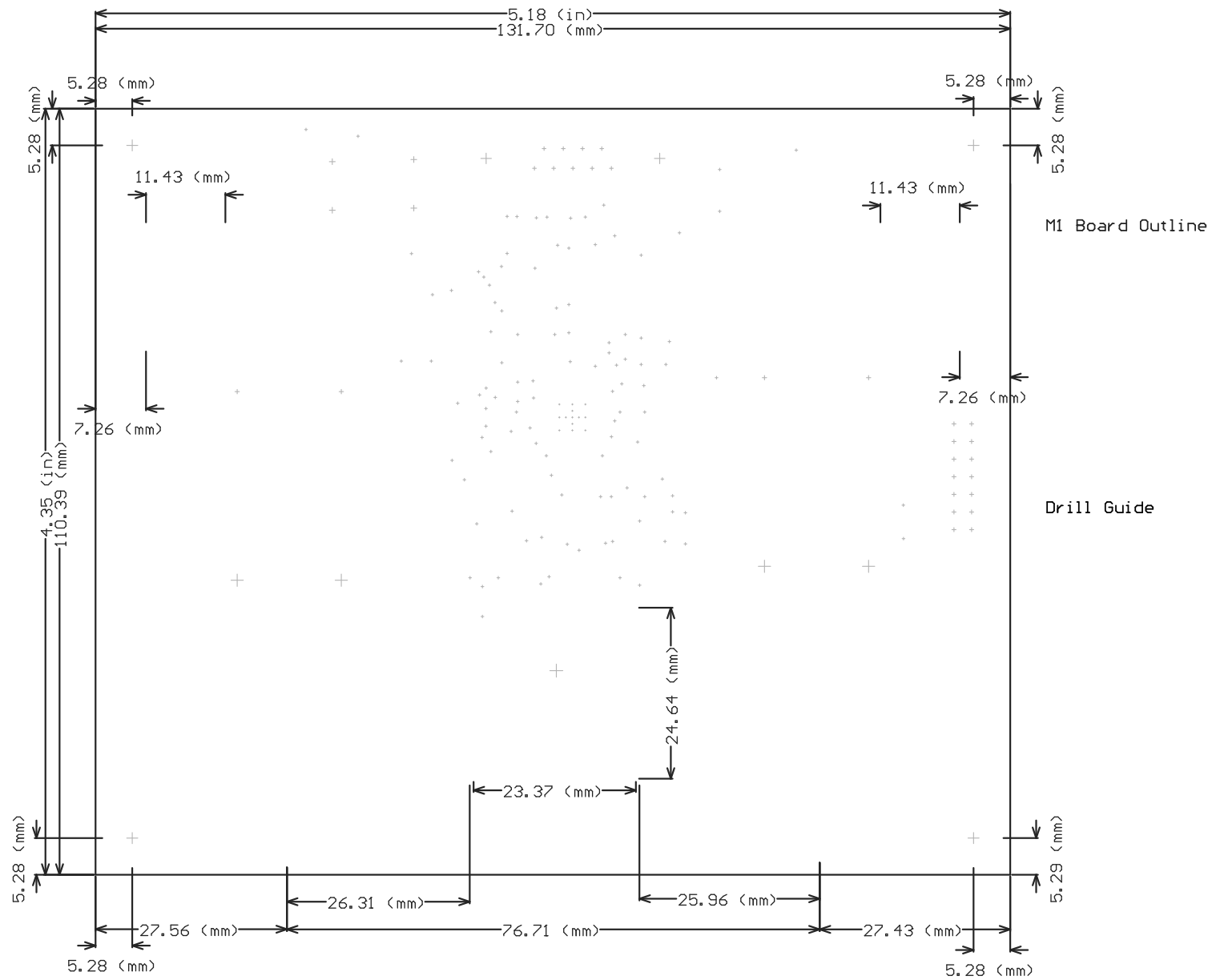
COMPONENTS MARKED 'DNP' SHOULD NOT BE POPULATED.
ASSEMBLY VARIANT: MPBSM_Project_FR4

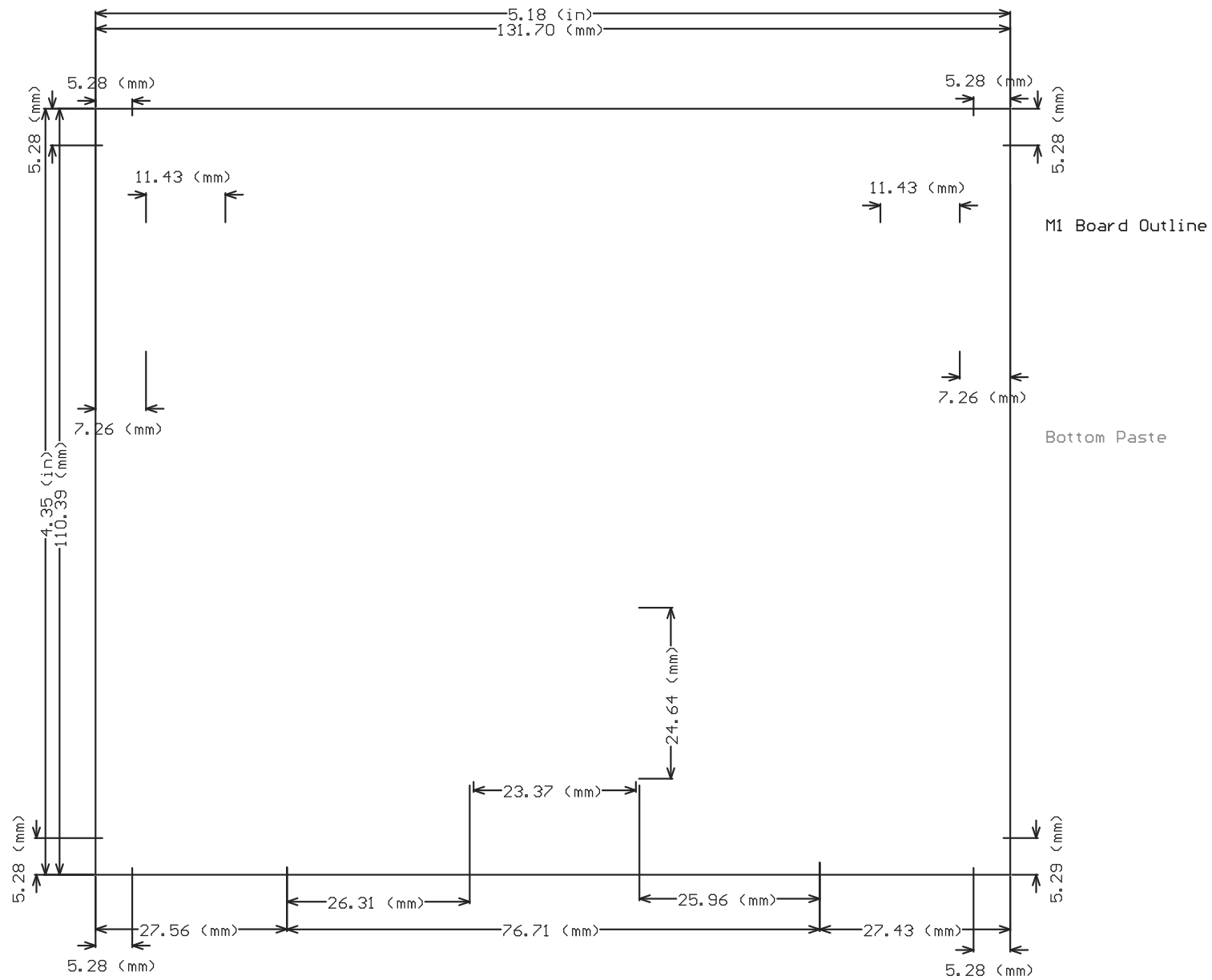
PCB VIEWED FROM TOP SIDE	BOARD #:	REV: 002	SUN REV: Not In VersionControl
IGNORE ->			
PLOT NAME = TIDM-1CHP-DTECT-CO-Mechanical	GENERATED : 5/11/2016 2:44:17 PM	TEXAS INSTRUMENTS	



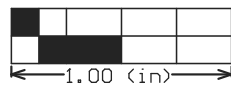
M2 Board Dimensions

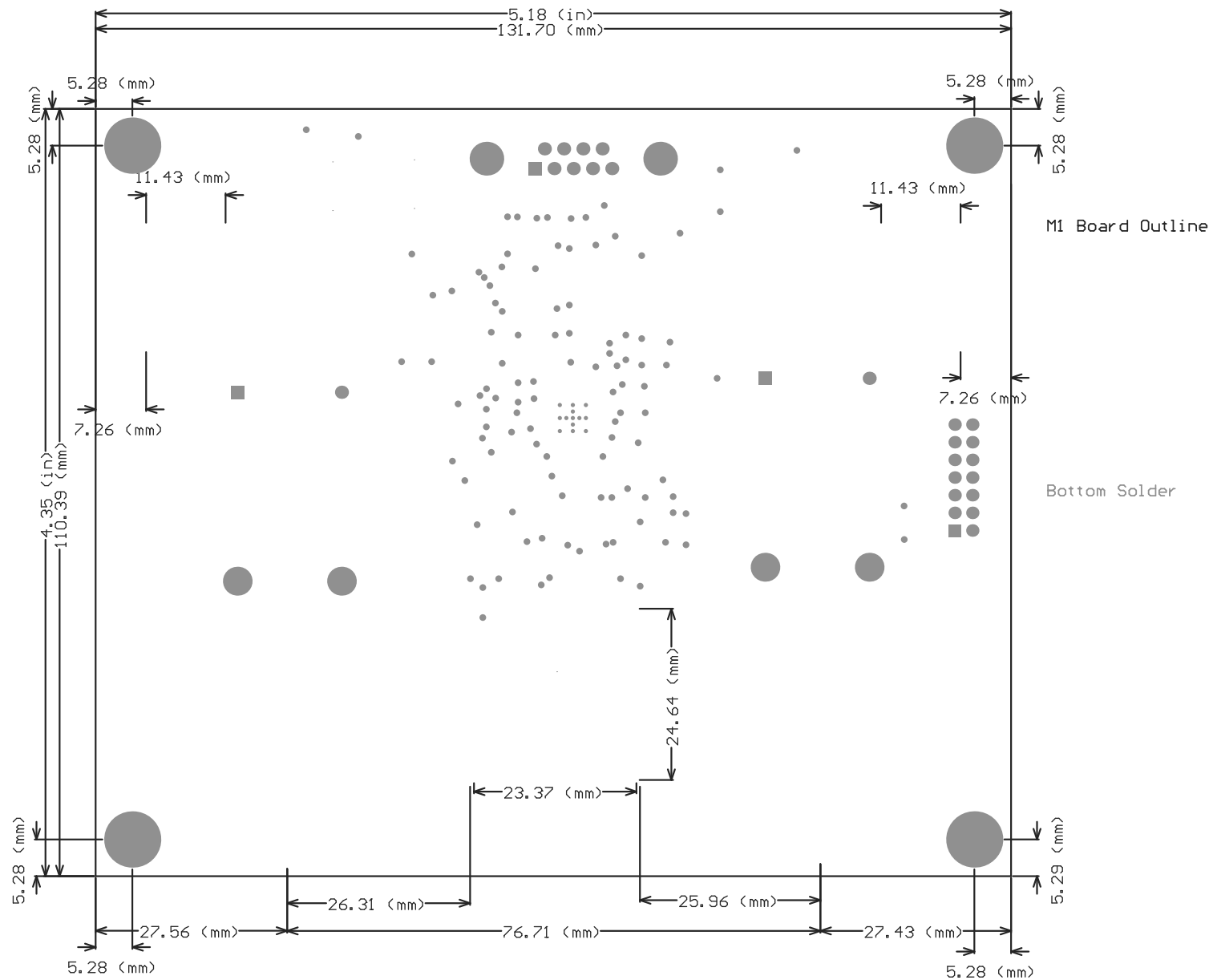






M2 Board Dimensions





M2 Board Dimensions

