

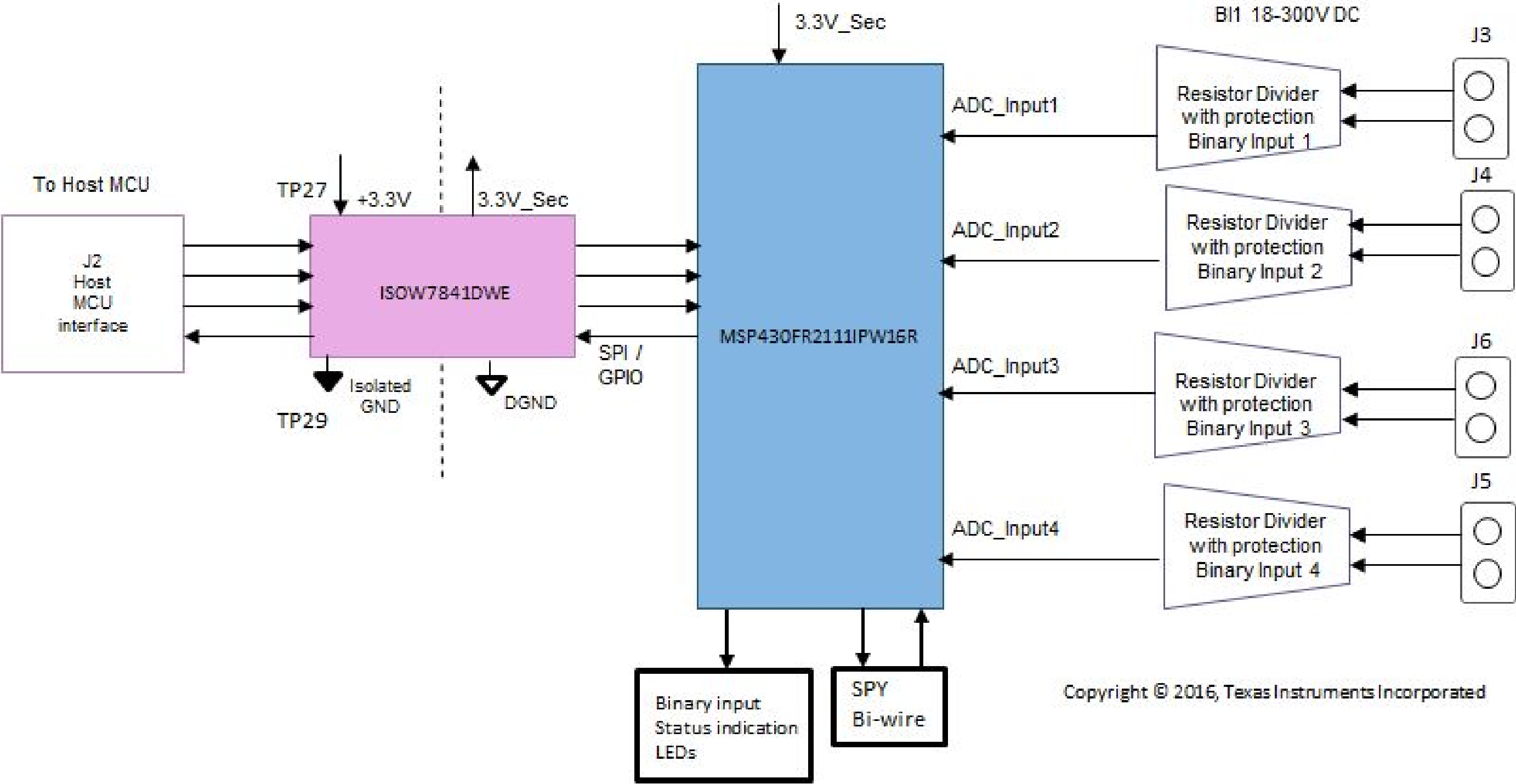
Revision History				
Rev	ECN #	Approved Date	Approved by	Notes
N/A	N/A	N/A	N/A	N/A

Page 2 BLOCK DIAGRAM

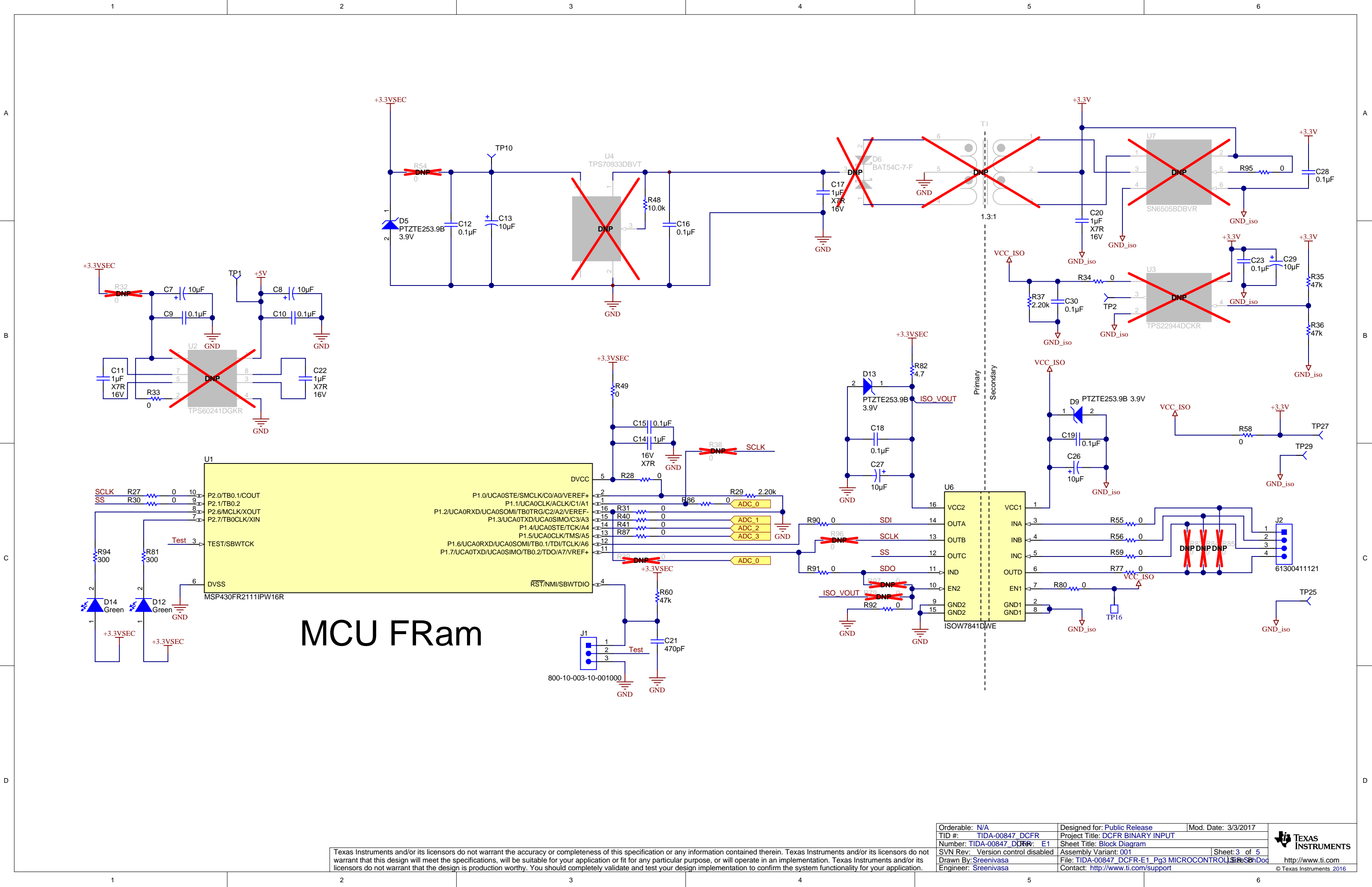
Page 3 MICROCONTROLLER

Page 4 BINARY INPUT

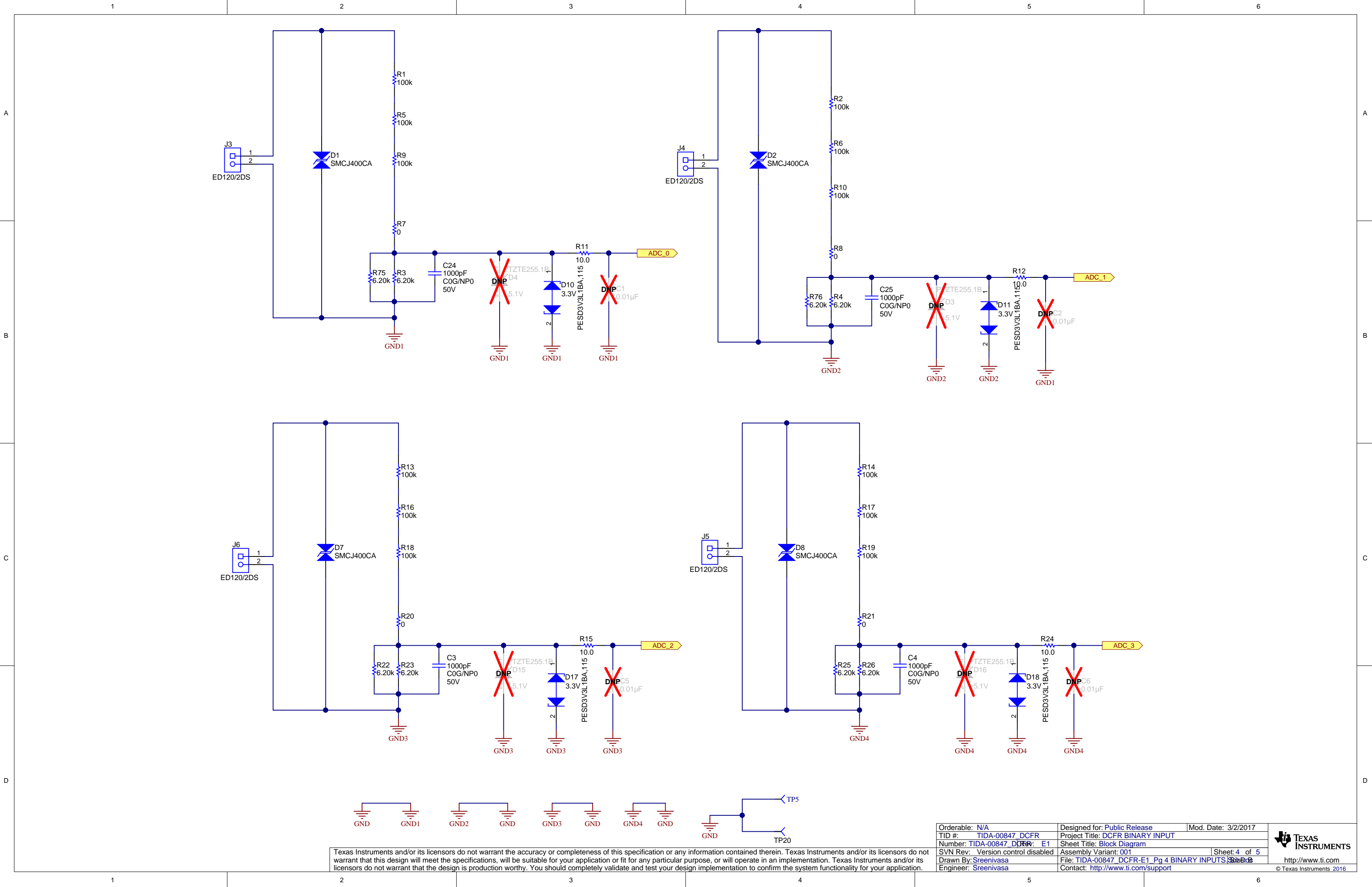
Page 5 HARDWARE D25-IO_ANSI-B



Copyright © 2016, Texas Instruments Incorporated



MCU FRam



Texas Instruments and/or its licensors do not warrant the accuracy or completeness of this specification or any information contained therein. Texas Instruments and/or its licensors do not warrant that this design will meet the specifications, will be suitable for your application or fit for any particular purpose, or will operate in an implementation. Texas Instruments and/or its licensors do not warrant that the design is production worthy. You should completely validate and test your design implementation to confirm the system functionality for your application.

Orderable: N/A	Designed for: Public Release	Mod. Date: 3/2/2017
TID #: TIDA-00847_DCFR	Project Title: DCFR BINARY INPUT	
Number: TIDA-00847_DCFR-E1	Sheet Title: Block Diagram	
SVN Rev: Version control disabled	Assembly Variant: 001	Sheet: 4 of 5
Drawn By: Sreenivasa	File: TIDA-00847_DCFR-E1_Pg 4 BINARY INPUTS_Sch04	
Engineer: Sreenivasa	Contact: http://www.ti.com/support	

