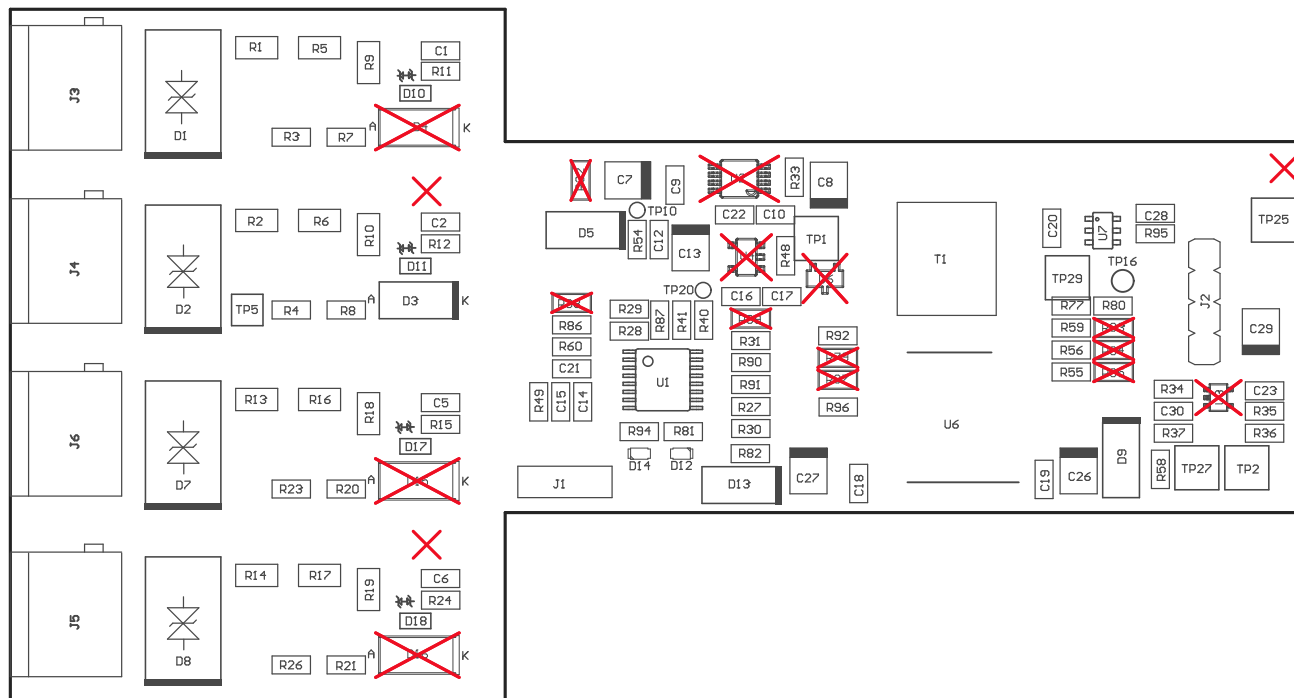
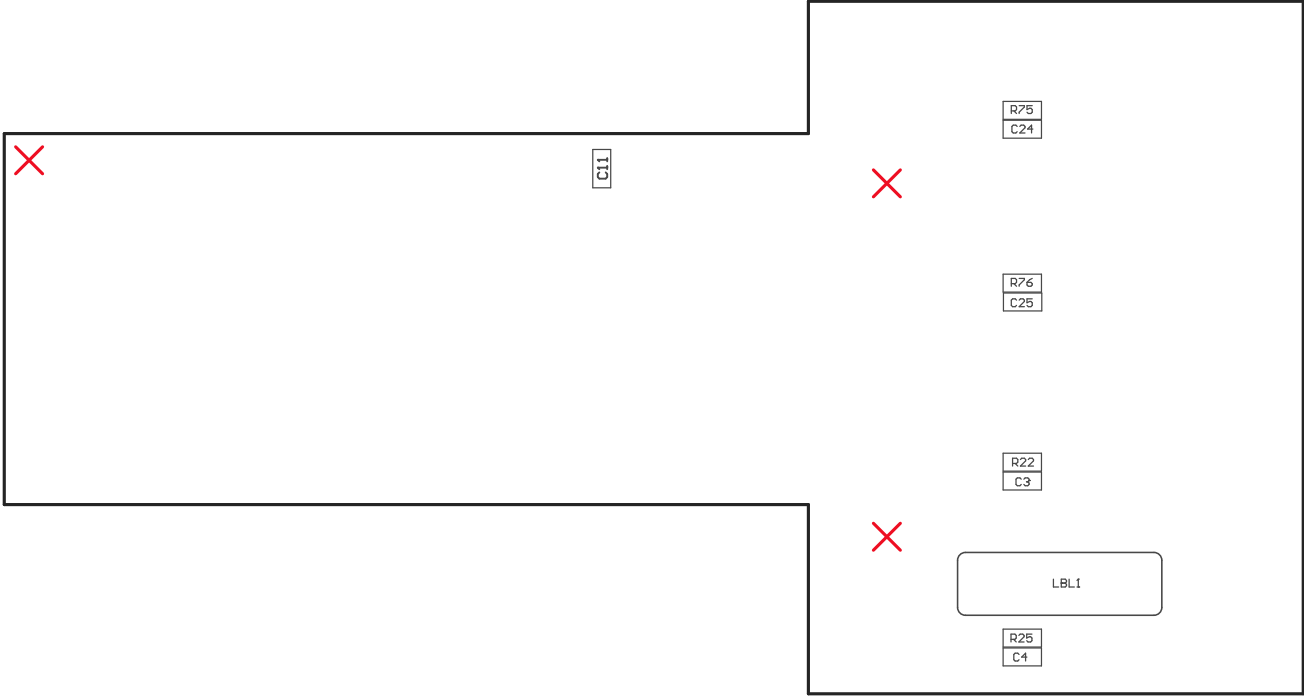


224 ■ These assemblies must comply with workmanship standards IPC-A-610 Class 2, unless otherwise specified.



COMPONENTS MARKED 'DNP' SHOULD NOT BE POPULATED.  
ASSEMBLY VARIANT: 001

PCB VIEWED FROM TOP SIDE	BOARD #:TIDA-00847_DCFR	REV: E1	SUN REV: Not In VersionControl
LAYER NAME = M5 Assembly Top	TID #:TIDA-00847_DCFR IGNORE ->		
PLOT NAME = Top Assembly Drawing	GENERATED : 3/3/2017 12:22:28 PM		TEXAS INSTRUMENTS



COMPONENTS MARKED 'DNP' SHOULD NOT BE POPULATED.

ASSEMBLY VARIANT: 001

PCB VIEWED FROM BOTTOM SIDE	BOARD #: TIDA-00847_DCFR	REV: E1	SUN REV: Not In VersionControl
LAYER NAME = M6 Assembly Bottom	TID #: TIDA-00847_DCFR IGNORE ->		
PLOT NAME = Bottom Assembly Drawing	GENERATED : 3/3/2017 12:22:29 PM	TEXAS INSTRUMENTS	