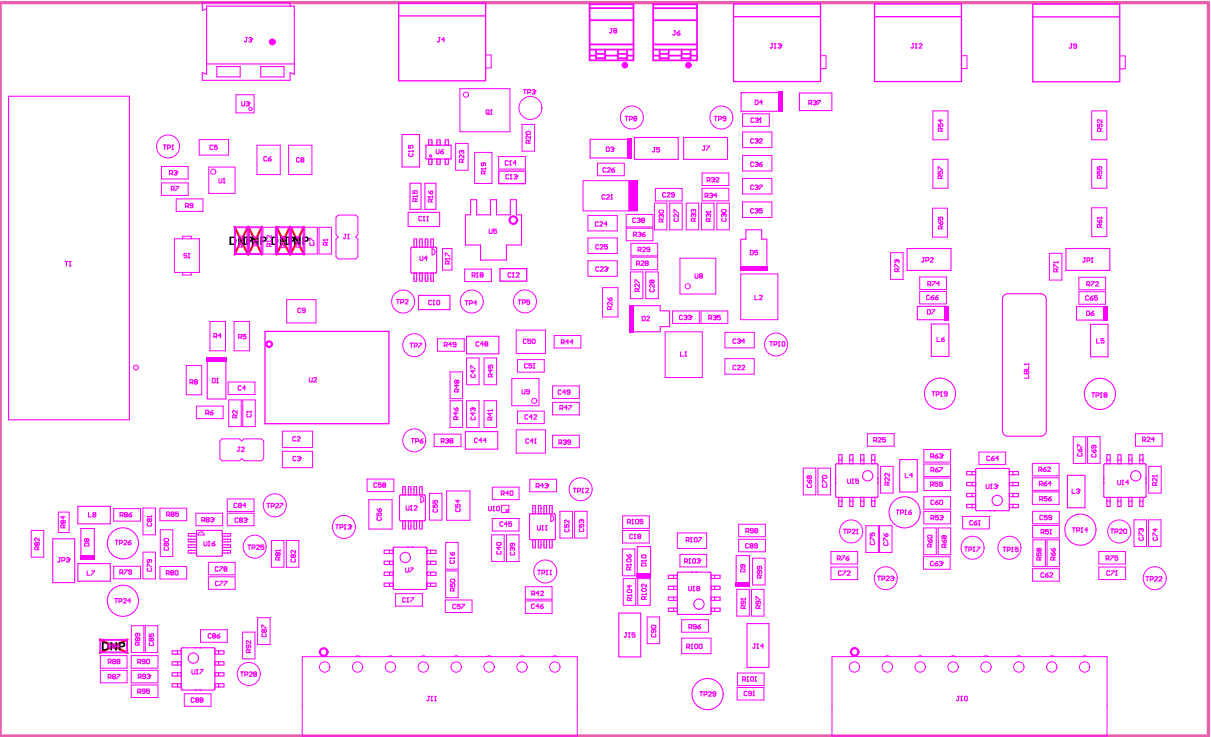


221 ■ Install label in silkscreened box after final wash. Text shall be 8 pt font. Text shall be per the Label Table in the PDF schematic.

222 ■ These assemblies are ESD sensitive, ESD precautions shall be observed.

223 ■ These assemblies must be clean and free from flux and all contaminants. Use of no clean flux is not acceptable.

224 ■ These assemblies must comply with workmanship standards IPC-A-610 Class 2, unless otherwise specified.

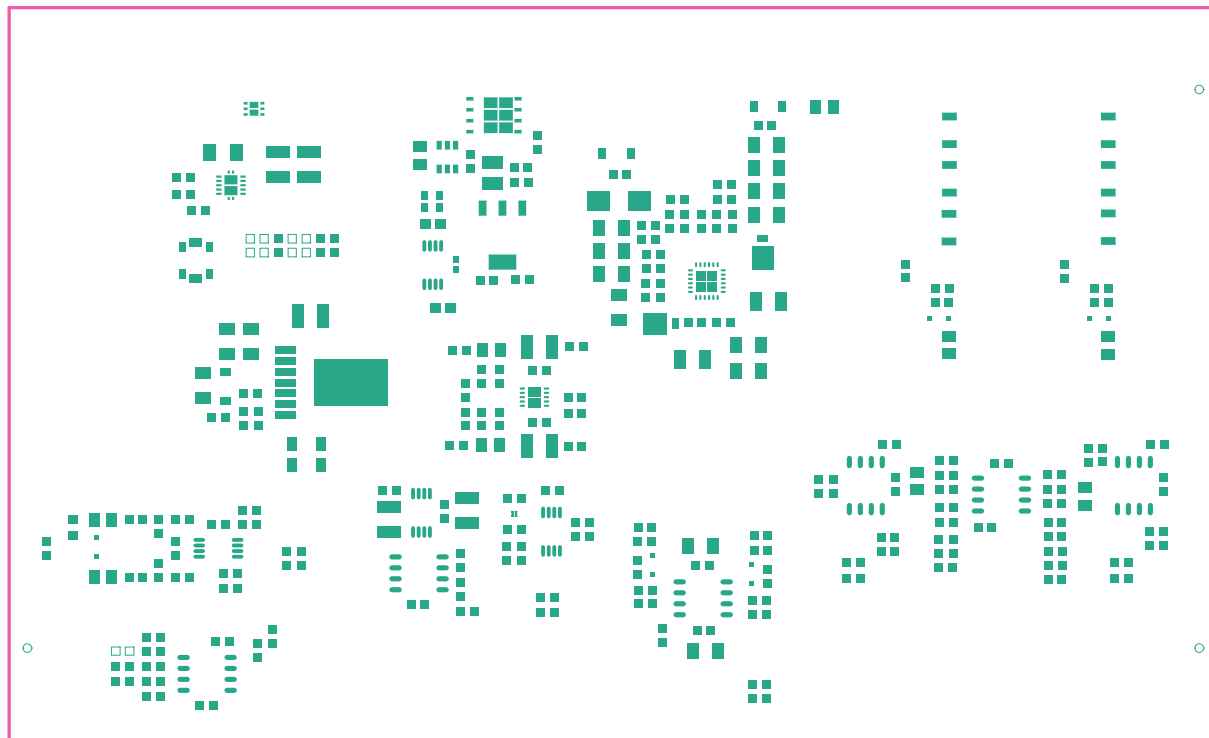


COMPONENTS MARKED "DNP" SHOULD NOT BE POPULATED.

ASSEMBLY VARIANT:

DOT

PCB USED FROM TOP SIZE	BOMD IN	TI0H-01576_A058604S_AFE	REV	E1	SUN REV	Not In VersionControl
LAYER NAME =	Top Assembly	TI0H	01576			
PLOT NAME =	Top LayerAssembly Drawing	GENERATED	1	4/6/2020	12h56m56 PM	TEXAS INSTRUMENTS



Top Paste



COMPONENTS MARKED 'DNP' SHOULD NOT BE POPULATED.

ASSEMBLY VARIANT: 001

PCB VIEWED FROM BOTTOM SIDE	BOARD #:	TIDA-01576_A0S8686S_AFE	REV:	E1	SUN REV:	Not In VersionControl
LAYER NAME = Bottom Assembly	TID#: 01576					
PLOT NAME = Bottom LayerAssembly Drawing	GENERATED :	4/6/2020	12:56:58 PM	TEXAS INSTRUMENTS		

Bottom Paste

