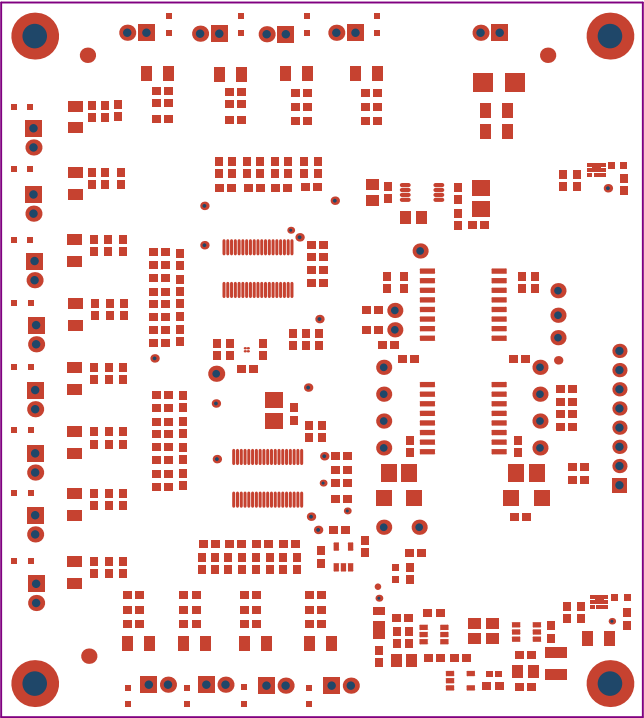
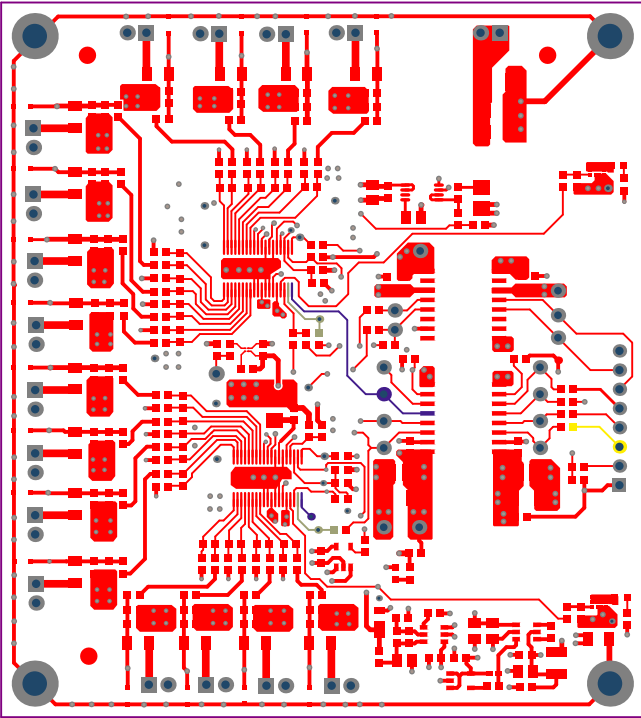


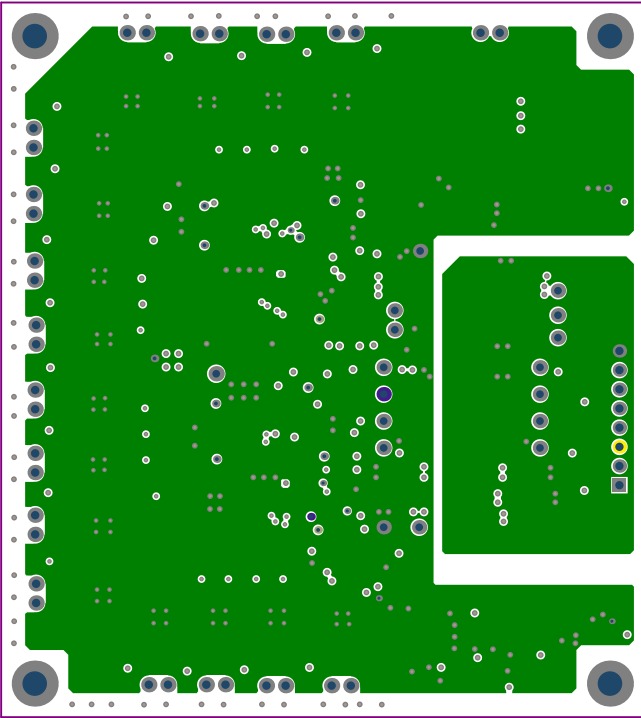
|                                  |                                    |                   |                                |
|----------------------------------|------------------------------------|-------------------|--------------------------------|
| ALL ARTWORK VIEWED FROM TOP SIDE | BOARD #:ISOLATED DUAL SDO          | REV: E1           | SVN REV: Not In VersionControl |
| LAYER NAME = Top Overlay         | TID #: TIDA-01576                  |                   |                                |
| PLOT NAME =Top Overlay           | GENERATED : 11/10/2017 11:45:18 AM | TEXAS INSTRUMENTS |                                |



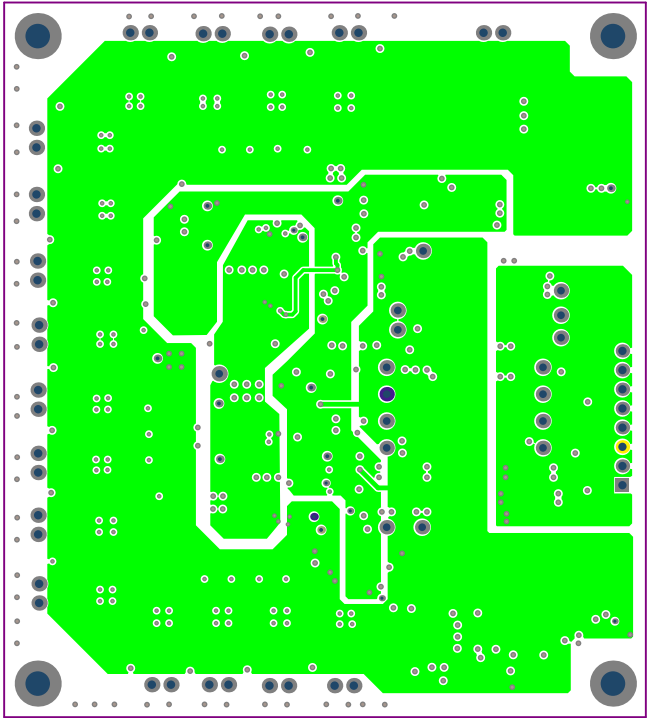
|                                  |                                    |                   |                                |
|----------------------------------|------------------------------------|-------------------|--------------------------------|
| ALL ARTWORK VIEWED FROM TOP SIDE | BOARD #:ISOLATED DUAL SDO          | REV: E1           | SVN REV: Not In VersionControl |
| LAYER NAME = Top Solder          | TID #: TIDA-01576                  |                   |                                |
| PLOT NAME =Top Solder Mask       | GENERATED : 11/10/2017 11:45:19 AM | TEXAS INSTRUMENTS |                                |



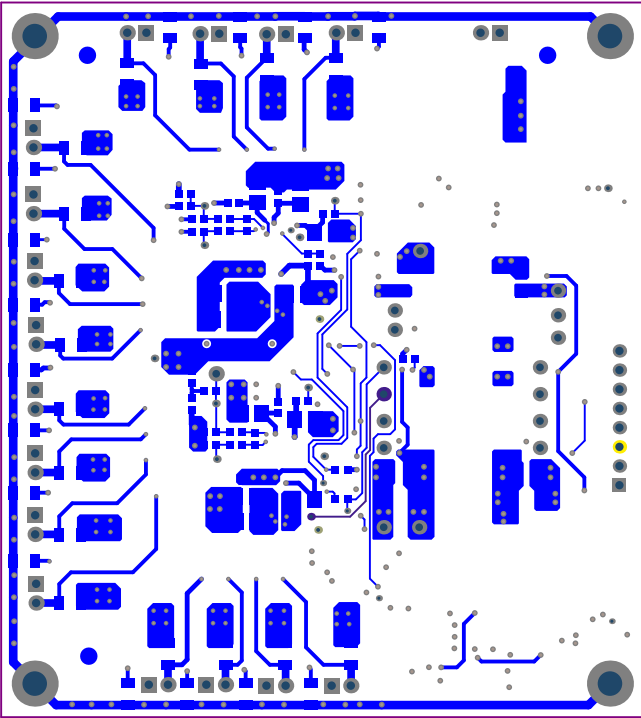
|                                  |                                    |                   |                                |
|----------------------------------|------------------------------------|-------------------|--------------------------------|
| ALL ARTWORK VIEWED FROM TOP SIDE | BOARD #:ISOLATED DUAL SDO          | REV: E1           | SVN REV: Not In VersionControl |
| LAYER NAME = Top Layer           | TID #: TIDA-01576                  |                   |                                |
| PLOT NAME =Top Layer             | GENERATED : 11/10/2017 11:45:20 AM | TEXAS INSTRUMENTS |                                |



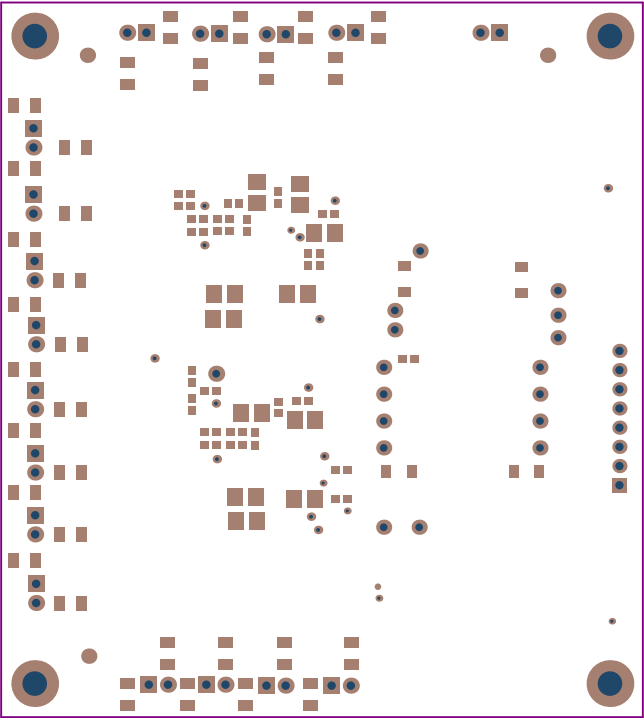
|                                  |                                    |                   |                                |
|----------------------------------|------------------------------------|-------------------|--------------------------------|
| ALL ARTWORK VIEWED FROM TOP SIDE | BOARD #:ISOLATED DUAL SDO          | REV: E1           | SVN REV: Not In VersionControl |
| LAYER NAME = L2_GND-PLANE        | TID #: TIDA-01576                  |                   |                                |
| PLOT NAME =Signal Layer 1        | GENERATED : 11/10/2017 11:45:22 AM | TEXAS INSTRUMENTS |                                |



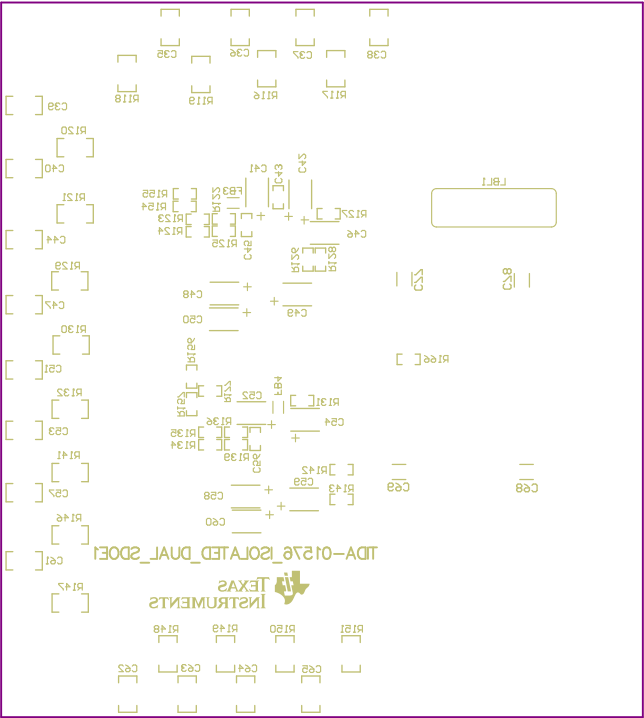
|                                  |                                    |                   |                                |
|----------------------------------|------------------------------------|-------------------|--------------------------------|
| ALL ARTWORK VIEWED FROM TOP SIDE | BOARD #:ISOLATED DUAL SDO          | REV: E1           | SVN REV: Not In VersionControl |
| LAYER NAME = L3_PWR-PLANE        | TID #: TIDA-01576                  |                   |                                |
| PLOT NAME =Signal Layer 2        | GENERATED : 11/10/2017 11:45:23 AM | TEXAS INSTRUMENTS |                                |



|                                  |                                    |                   |                                |
|----------------------------------|------------------------------------|-------------------|--------------------------------|
| ALL ARTWORK VIEWED FROM TOP SIDE | BOARD #:ISOLATED DUAL SDO          | REV: E1           | SVN REV: Not In VersionControl |
| LAYER NAME = Bottom Layer        | TID #: TIDA-01576                  |                   |                                |
| PLOT NAME =Bottom Layer          | GENERATED : 11/10/2017 11:45:24 AM | TEXAS INSTRUMENTS |                                |



|                                  |                                    |                   |                                |
|----------------------------------|------------------------------------|-------------------|--------------------------------|
| ALL ARTWORK VIEWED FROM TOP SIDE | BOARD #:ISOLATED DUAL SDO          | REV: E1           | SVN REV: Not In VersionControl |
| LAYER NAME = Bottom Solder       | TID #: TIDA-01576                  |                   |                                |
| PLOT NAME =Bottom Solder Mask    | GENERATED : 11/10/2017 11:45:25 AM | TEXAS INSTRUMENTS |                                |

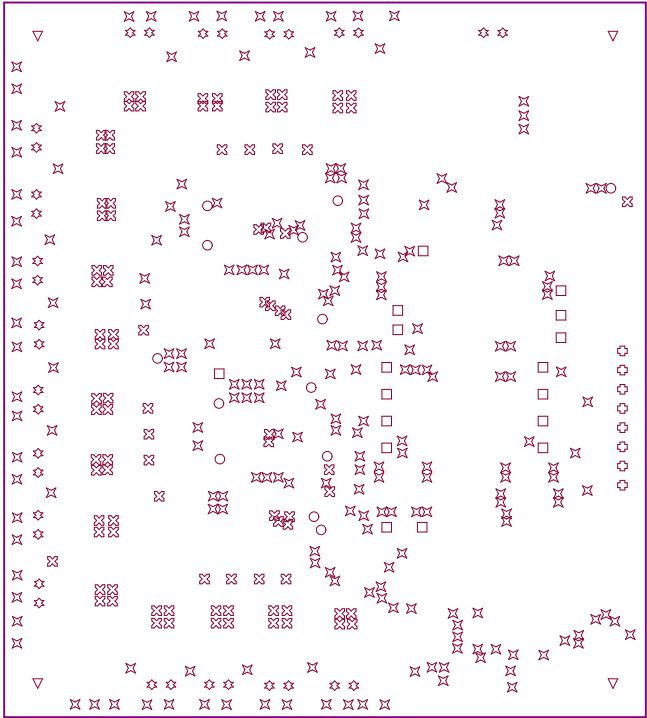


|                                  |                                    |                   |                                |
|----------------------------------|------------------------------------|-------------------|--------------------------------|
| ALL ARTWORK VIEWED FROM TOP SIDE | BOARD #:ISOLATED DUAL SDO          | REV: E1           | SVN REV: Not In VersionControl |
| LAYER NAME = Bottom Overlay      | TID #: TIDA-01526                  |                   |                                |
| PLOT NAME =Bottom Overlay        | GENERATED : 11/10/2017 11:45:26 AM | TEXAS INSTRUMENTS |                                |



| Layer Stack Up Detail for:TIDA-01576_ISOLATED_DUAL_SDO.PcbDoc |                 |                  |                     |
|---|-----------------|------------------|---------------------|
| Layer Name  | Gerber Document | Copper Thickness | Dielectric Material |
| Top Solder Mask   | (.8TS)          |                  | Solder Resist       |
| Top Layer   | (.6TL)          | 1.4mil           | FR-4                |
| L2_GND-PLANE  | (.6I)           | 1.4mil           | FR-4                |
| L3_PWR-PLANE  | (.6Z)           | 1.4mil           | FR-4                |
| Bottom Layer  | (.6BL)          | 1.4mil           |                     |
| Bottom Solder Mask  | (.6BS)          |                  | Solder Resist       |

|  |  |
|--|--|
| DESIGN INFORMATION   |  |
| BOARD SIZE (REFER ALSO ARRAY/PANEL PROFILING INFORMATION)  |  |
| <div><div>85 MM</div><div>X</div><div>94.61 MM</div></div>   |  |
| Number of Layers : <div>4</div>  |  |
| MIN. TRACK WIDTH: <div>8 MIL</div>   |  |
| MIN. CLEARANCE: <div>7.87 MIL</div>  |  |
| MIN. VIA PAD SIZE: <div>24 MIL</div>   |  |
| MINIMUM ANNULAR RING 0.152mm (6MIL) EXTERNAL   |  |
| PER IPC-D-275 CLASS 2 LEVEL C  |  |
| REGISTRATION TOLERANCES: METAL +/- <div>5 MIL</div> , HOLES +/- <div>3 MIL</div>   |  |
| IMPEDANCE CONTROLLED:NO  |  |
| MATERIAL:  |  |
| <div><div></div> FR-408 <div><input checked="" type="checkbox"/></div> FR-4 High Tg <div></div> OTHER</div>  |  |
| THICKNESS: <div><input checked="" type="checkbox"/></div> 63 MIL (1.6mm) +/-10% <div></div> OTHER  |  |
| TOLERANCE: <div><input checked="" type="checkbox"/></div> ANSI IPC-6012 TYPE 3 CLASS 2   |  |
| <div><div></div> OTHER +/-</div>   |  |
| BOW & TWIST: <div><input checked="" type="checkbox"/></div> ANSI IPC-6012 TYPE 3 CLASS 2   |  |
| <div><div></div> OTHER +/-</div>   |  |
| COPPER THICKNESS (FINISHED):   |  |
| OUTER: <div><input checked="" type="checkbox"/></div> 1.4MIL (1oz) <div></div> 2MIL (1.4oz) <div></div> 2.8MIL (2oz)                                 |  |
| INNER SIGNAL: <div><input checked="" type="checkbox"/></div> 1.4MIL (1oz) <div></div> 2.8MIL (2oz) <div></div> N/A                                   |  |
| DRILLING:  |  |
| REFERENCE: <div><input checked="" type="checkbox"/></div> AS SHOWN <div><input checked="" type="checkbox"/></div> NC_DRILL FILES                     |  |
| PTH MIN COPPER THICKNESS: <div><input checked="" type="checkbox"/></div> 1MIL <div></div> OTHER  |  |
| BOARD FINISH:  |  |
| SILKSCREEN: <div><input checked="" type="checkbox"/></div> TOP <div><input checked="" type="checkbox"/></div> BOTTOM                                 |  |
| SILKSCREEN COLOR: <div><input checked="" type="checkbox"/></div> WHITE <div></div> OTHER   |  |
| SOLDER RESIST COLOR:   |  |
| <div><input checked="" type="checkbox"/></div> GREEN <div></div> BLUE <div></div> OTHER  |  |
| SURFACE FINISH: <div><input checked="" type="checkbox"/></div> IMMERSION GOLD (ENIG) <div></div> ENEPIG  |  |
| <div><div></div> IMM. TIN/SILVER OR EQUIV <div></div> OTHER</div>  |  |
| ARRAY/PANEL: <div></div> CUT AND TRIM PER MECH LAYER 1   |  |
| <div></div> N.C. ROUTE <div><input checked="" type="checkbox"/></div> V. SCORE   |  |
| CERTIFICATION: MATERIALS AND WORKMANSHIP FOR ALL PCBs TO MEET OR EXCEED THE REQUIREMENTS OF:   |  |
| <div><input checked="" type="checkbox"/></div> ANSI IPC-A-600F CLASS -> <div></div> 1 <div><input checked="" type="checkbox"/></div> 2 <div></div> 3 |  |
| <div><input checked="" type="checkbox"/></div> UL 94V-0 <div><input checked="" type="checkbox"/></div> RoHS <div></div> OTHER PER ORDER              |  |
| ADDITIONAL REQUIREMENTS: VIA TENTING: YES <div><input checked="" type="checkbox"/></div> NO <div></div>  |  |
| MICROSECTION: <div></div> YES IMPEDANCE CONTROL: YES <div></div> NO <div><input checked="" type="checkbox"/></div>                                   |  |
| BARE BOARD ELEC. TEST: <div></div> NONE <div><input checked="" type="checkbox"/></div> REQUIRED <div></div> PER ORDER                                |  |
| MANUFACTURER'S UL: <div></div> RAIL <div></div> METAL <div><input checked="" type="checkbox"/></div> SILK  |  |

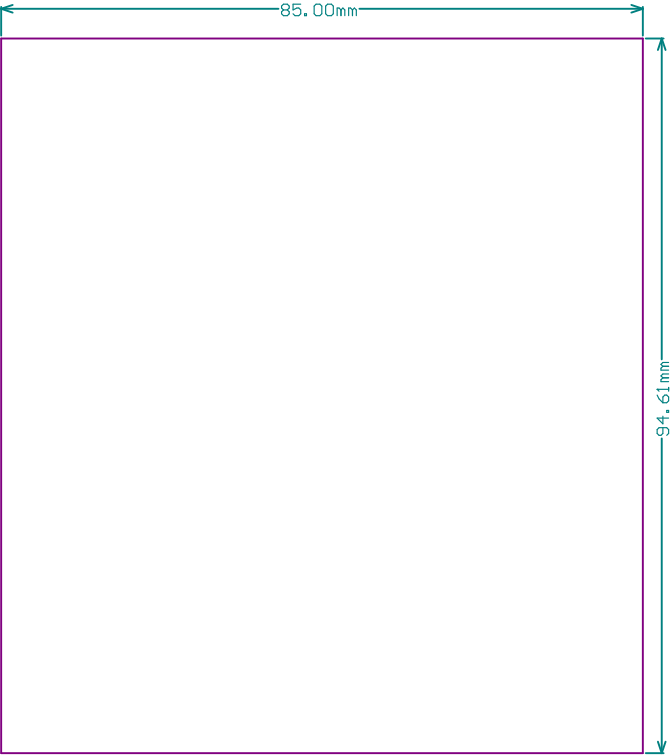


Drill Table

| Symbol | Quantity  | Finished Hole Size  | Plated | Hole Type | Drill Layer Pair         |
|--------|-----------|---------------------|--------|-----------|--------------------------|
| ⊠      | 94        | 12.00mil (0.305mm)  | PTH    | Round     | Top Layer - Bottom Layer |
| ⊠      | 225       | 16.00mil (0.406mm)  | PTH    | Round     | Top Layer - Bottom Layer |
| ○      | 13        | 20.00mil (0.508mm)  | PTH    | Round     | Top Layer - Bottom Layer |
| □      | 17        | 40.00mil (1.016mm)  | PTH    | Round     | Top Layer - Bottom Layer |
| ⊕      | 8         | 43.31mil (1.100mm)  | PTH    | Round     | Top Layer - Bottom Layer |
| ⊛      | 34        | 44.00mil (1.118mm)  | PTH    | Round     | Top Layer - Bottom Layer |
| ▽      | 4         | 128.00mil (3.251mm) | PTH    | Round     | Top Layer - Bottom Layer |
|        | 395 Total |                     |        |           |                          |

FOR 12MIL DRILL +0/-12MIL  
FOR 16MIL DRILL +0/-16MIL  
FOR PTH DRILL +/-3MIL

|                                  |                                    |                   |                                |
|----------------------------------|------------------------------------|-------------------|--------------------------------|
| ALL ARTWORK VIEWED FROM TOP SIDE | BOARD #:ISOLATED DUAL SDO          | REV: E1           | SVN REV: Not In VersionControl |
| LAYER NAME = Drill Drawing       | TID #: TIDA-01576                  |                   |                                |
| PLOT NAME =Drill Drawing         | GENERATED : 11/10/2017 11:45:28 AM | TEXAS INSTRUMENTS |                                |



|                                  |                                    |                   |                                |
|----------------------------------|------------------------------------|-------------------|--------------------------------|
| ALL ARTWORK VIEWED FROM TOP SIDE | BOARD #: ISOLATED DUAL SDO         | REV: E1           | SVN REV: Not In VersionControl |
| LAYER NAME =                     | TID #: TIDA-01576                  |                   |                                |
| PLOT NAME =Board Dimensions      | GENERATED : 11/10/2017 11:45:29 AM | TEXAS INSTRUMENTS |                                |