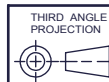
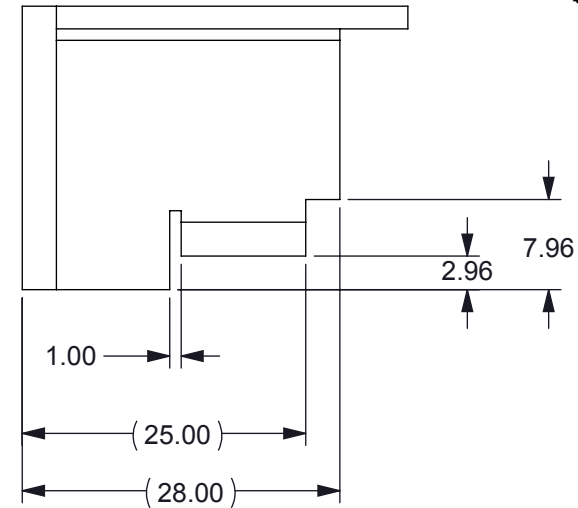
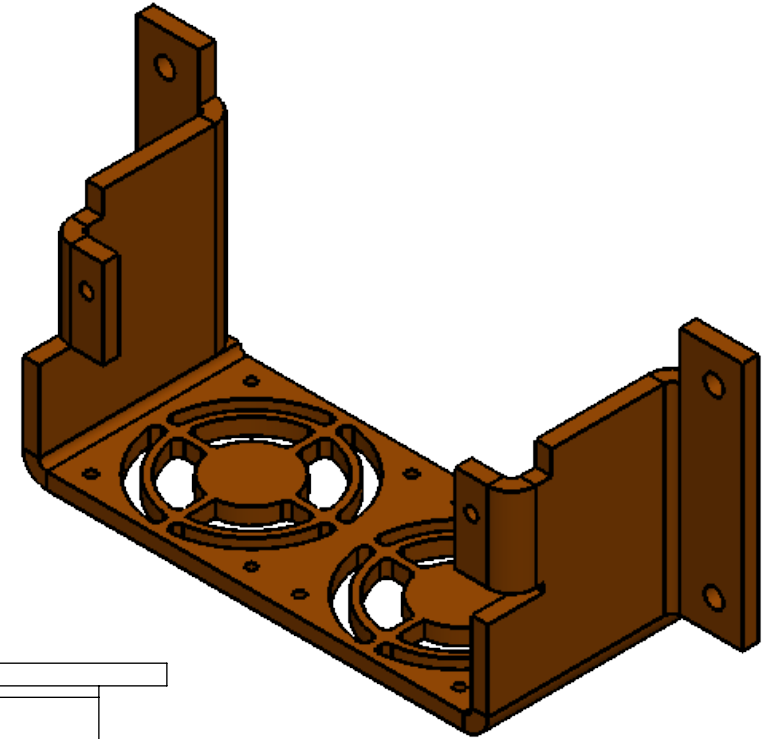
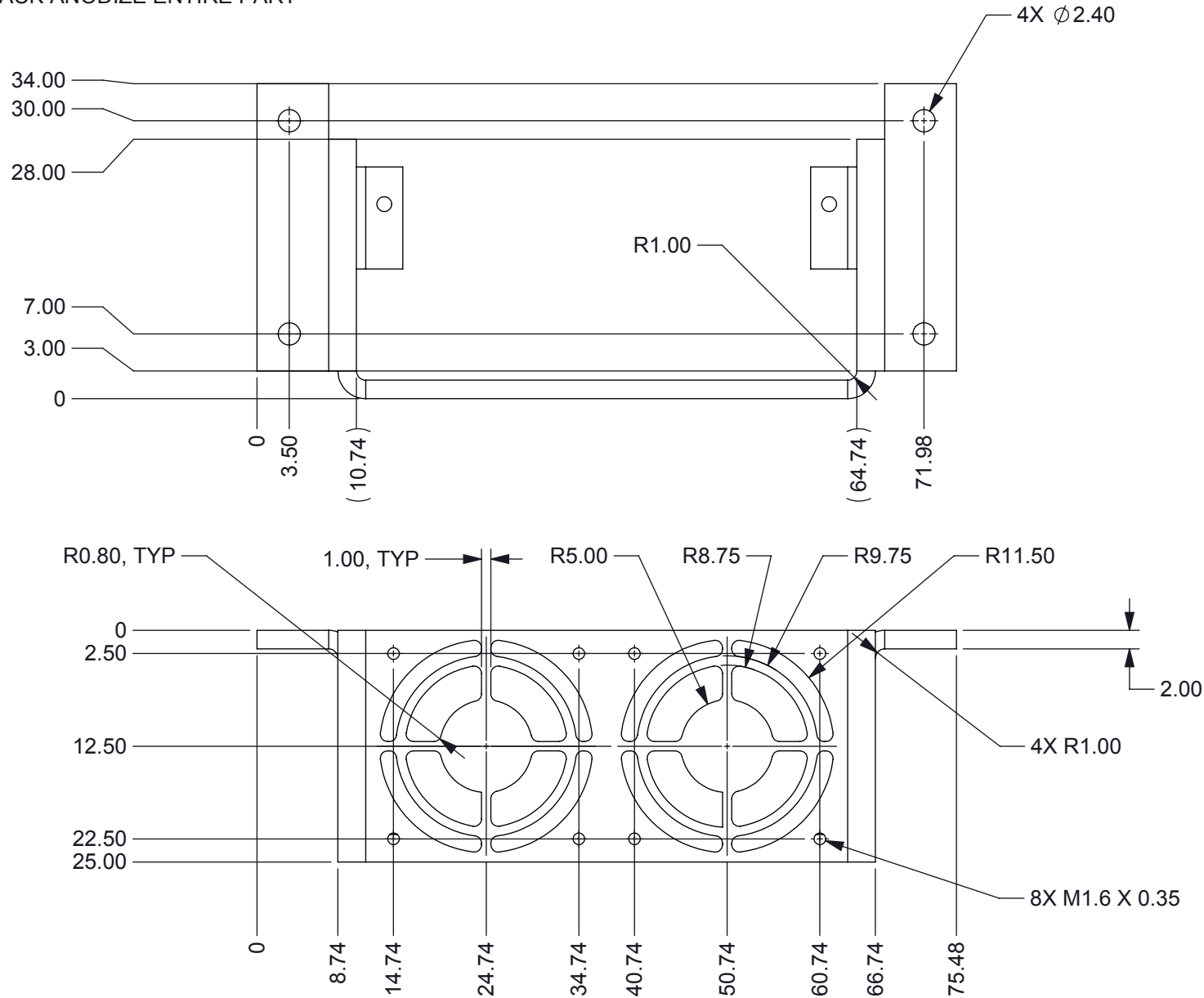


NOTES: UNLESS OTHERWISE SPECIFIED:

- MATERIAL: 2MM THICK ALUMINUM
- BLACK ANODIZE ENTIRE PART

© COPYRIGHT 2016 TEXAS INSTRUMENTS
UNPUBLISHED, ALL RIGHTS RESERVED

DWG NO 3010-EVM-G2-FAN-MOUNT-SS		SHEET 1	1
REVISIONS			
REV	DESCRIPTION	DATE	BY
A	INITIAL RELEASE	12-05-2016	SS
B	FLIPPED BOTTOM TAPS INWARD TO MISS PIPE	1/25/2017	SS
C	R.80 WAS R.50	2/13/2017	SS



UNLESS OTHERWISE SPECIFIED

- DIMENSIONS ARE IN MILLIMETERS
- TOLERANCES: ANGLES $\pm 1^\circ$
2 PLACE DECIMALS ± 0.25
1 PLACE DECIMALS ± 0.50
- DIMENSIONAL LIMITS APPLY BEFORE PROCESSES
- INTERPRET DIMENSIONS IN ACCORDANCE WITH ASME Y14.5M-1994
- REMOVE ALL BURRS AND SHARP EDGES
- PARENTHETICAL INFO FOR REF ONLY

DWN
STEVE SMITH
Engr

DATE
12/5/2016

CQE/QA

CM

Apprvd



FAN MOUNT

SIZE
B

DWG NO
3010-EVM-G2-FAN-MOUNT-SS

REV
C

SCALE 2:1

SHEET 1 OF 1