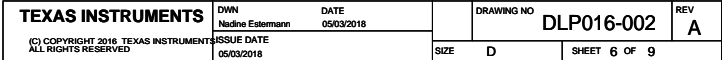
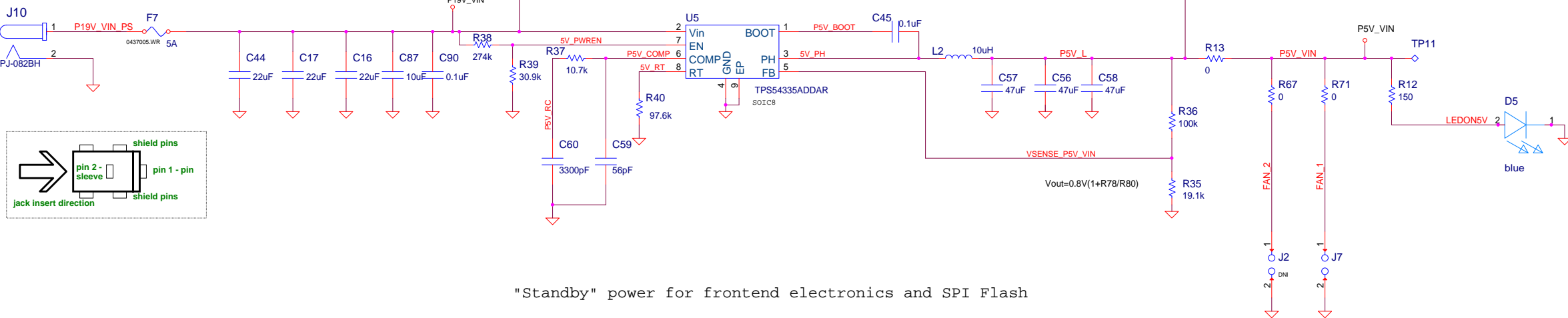
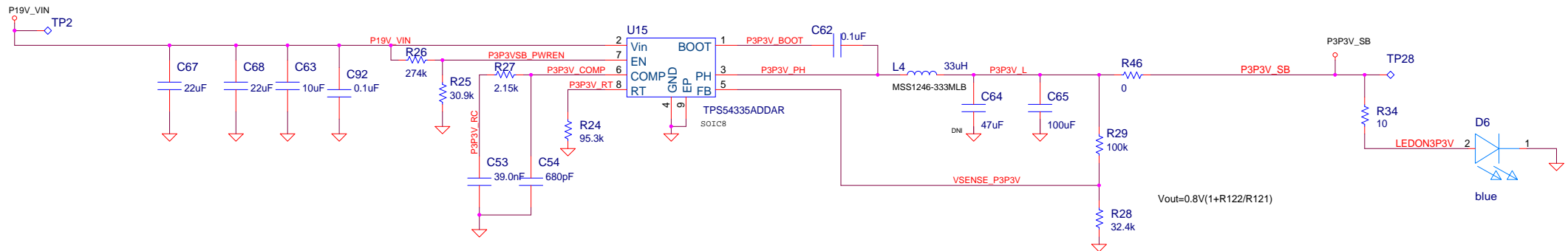


[illegible]

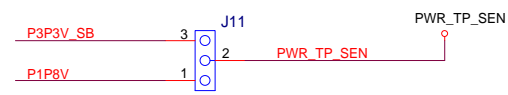
+19V
Power
Input



"Standby" power for frontend electronics and SPI Flash



Voltage level selection for Sensing signals



1	2	3	4	5	6	7	8	9
<div>Revisions</div> <div><div>Rev. E.0 : Development version</div><div>Changed Input power to 19V</div><div>Removed 3.3V regulator and added 3.3V_SB regulator</div><div>Changed ITE OVDD voltage to 3.3V</div><div>Rev. E.1: Changed R56 to install and R55 to DNI - The power for the MSP430 will be supplied by the input power not the debugger</div><div>Changed J12 and J14 to DNI</div><div>Changed Title to accommodate new part number</div><div>Rev. A : Removed ESD number, General clean-up, Changed Revision to A</div></div>								