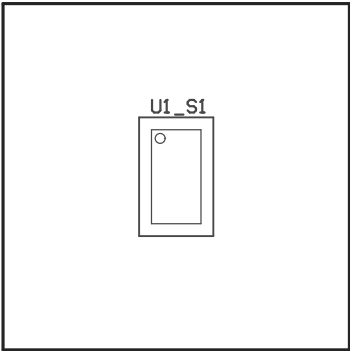
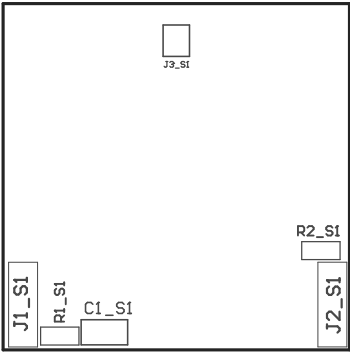


- ZZ1 ■Install label in silkscreened box after final wash. Text shall be 8 pt font. Text shall be per the Label Table in the PDF schematic.
- ZZ2 ■These assemblies are ESD sensitive, ESD precautions shall be observed.
- ZZ3 ■These assemblies must be clean and free from flux and all contaminants. Use of no clean flux is not acceptable.
- ZZ4 ■These assemblies must comply with workmanship standards IPC-A-610 Class 2, unless otherwise specified.



COMPONENTS MARKED 'DNP' SHOULD NOT BE POPULATED.  
ASSEMBLY VARIANT: 001

|                                  |                                   |         |                                |
|----------------------------------|-----------------------------------|---------|--------------------------------|
| PCB VIEWED FROM TOP SIDE         | BOARD #: TIDA-010029              | REV: E1 | SVN REV: Not In VersionControl |
| LAYER NAME = M5 Assembly Top     | TID #: TIDA-010029                |         |                                |
| PLOT NAME = Top Assembly Drawing | GENERATED : 10/17/2018 5:51:03 PM |         | TEXAS INSTRUMENTS              |



COMPONENTS MARKED 'DNP' SHOULD NOT BE POPULATED.  
ASSEMBLY VARIANT: 001

|                                     |                                   |         |                                |
|-------------------------------------|-----------------------------------|---------|--------------------------------|
| PCB VIEWED FROM BOTTOM SIDE         | BOARD #: TIDA-010029              | REV: E1 | SVN REV: Not In VersionControl |
| LAYER NAME = M6 Assembly Bottom     | TID #: TIDA-010029                |         |                                |
| PLOT NAME = Bottom Assembly Drawing | GENERATED : 10/17/2018 5:51:04 PM |         | TEXAS INSTRUMENTS              |