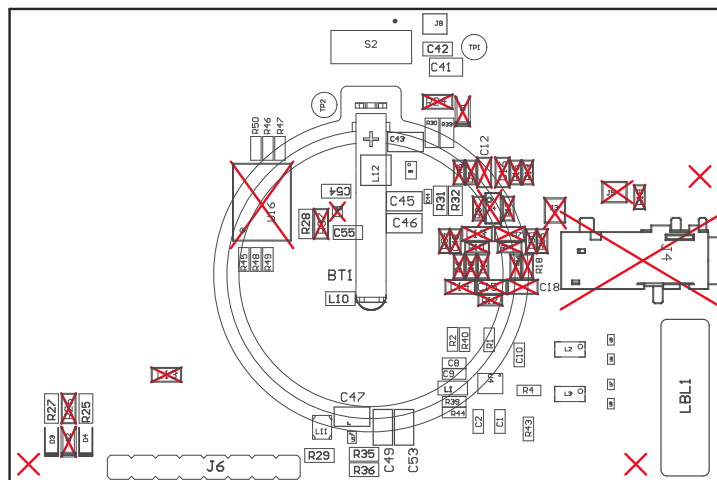
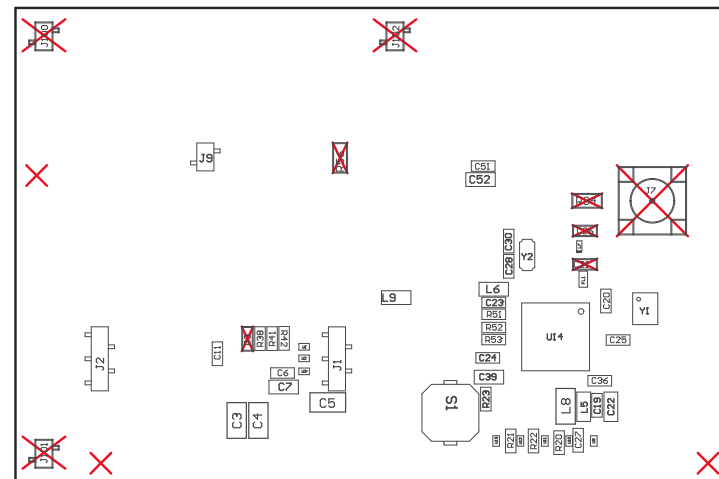


ZZ1 ■ Install label in silkscreened box after final wash. Text shall be 8 pt font. Text shall be per the Label Table in the PDF schematic.
 ZZ2 ■ These assemblies are ESD sensitive, ESD precautions shall be observed.
 ZZ3 ■ These assemblies must be clean and free from flux and all contaminants. Use of no clean flux is not acceptable.
 ZZ4 ■ These assemblies must comply with workmanship standards IPC-A-610 Class 2, unless otherwise specified.



COMPONENTS MARKED 'DNP' SHOULD NOT BE POPULATED.
 ASSEMBLY VARIANT: 001

PCB VIEWED FROM TOP SIDE	BOARD #: TIDA-010029	REV: E1	SUN REV: Not In VersionControl
LAYER NAME = M5 Assembly Top	TID #: TIDA-010029		
PLOT NAME = Top Assembly Drawing	GENERATED : 7/26/2018 4:08:11 PM	TEXAS INSTRUMENTS	



COMPONENTS MARKED 'DNP' SHOULD NOT BE POPULATED.
ASSEMBLY VARIANT: 001

PCB VIEWED FROM BOTTOM SIDE	BOARD #: TIDA-010029	REV: E1	SVN REV: Not In VersionControl
LAYER NAME = M6 Assembly Bottom	TID #: TIDA-010029		
PLOT NAME = Bottom Assembly Drawing	GENERATED : 7/26/2018 4:08:14 PM	TEXAS INSTRUMENTS	