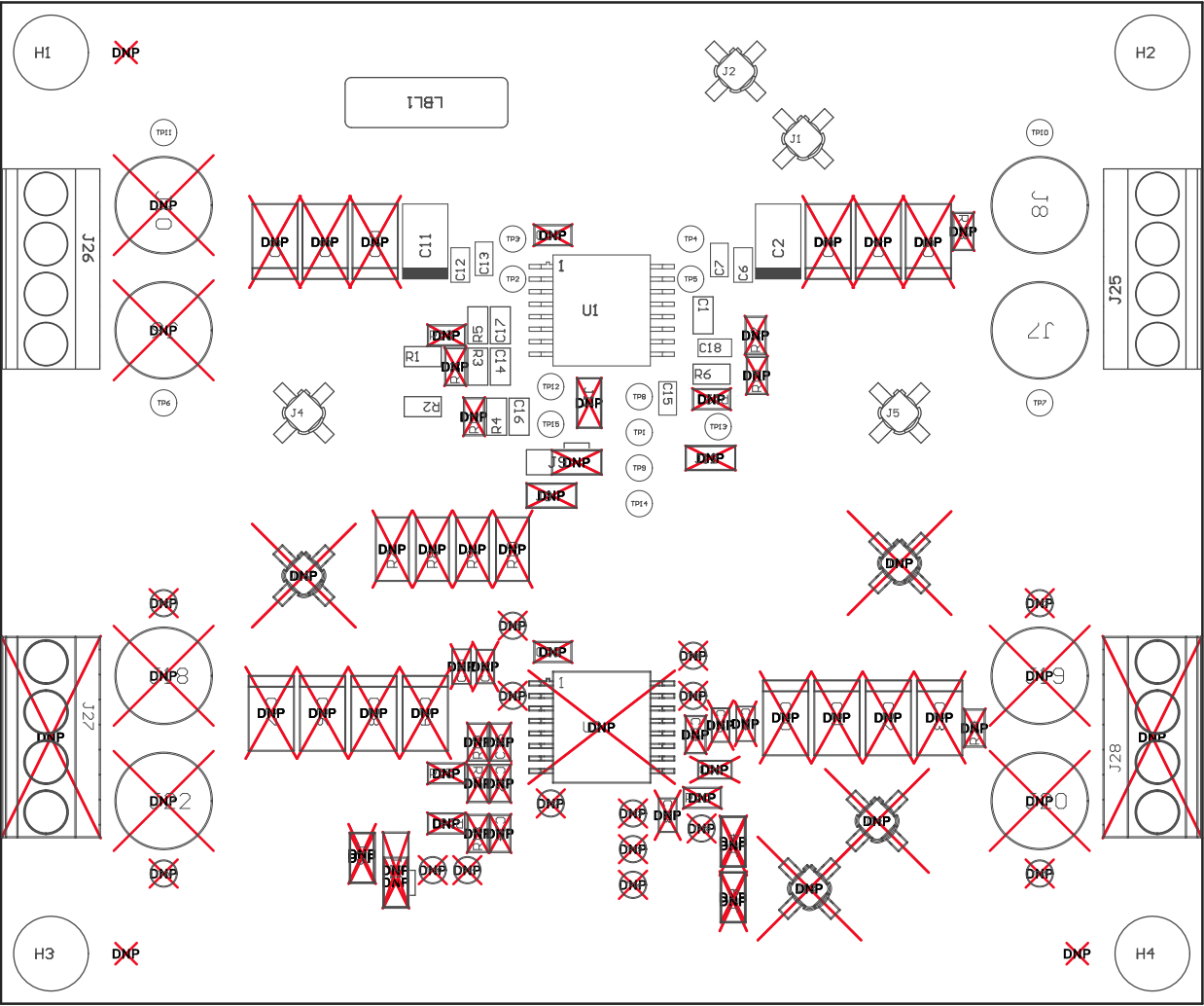
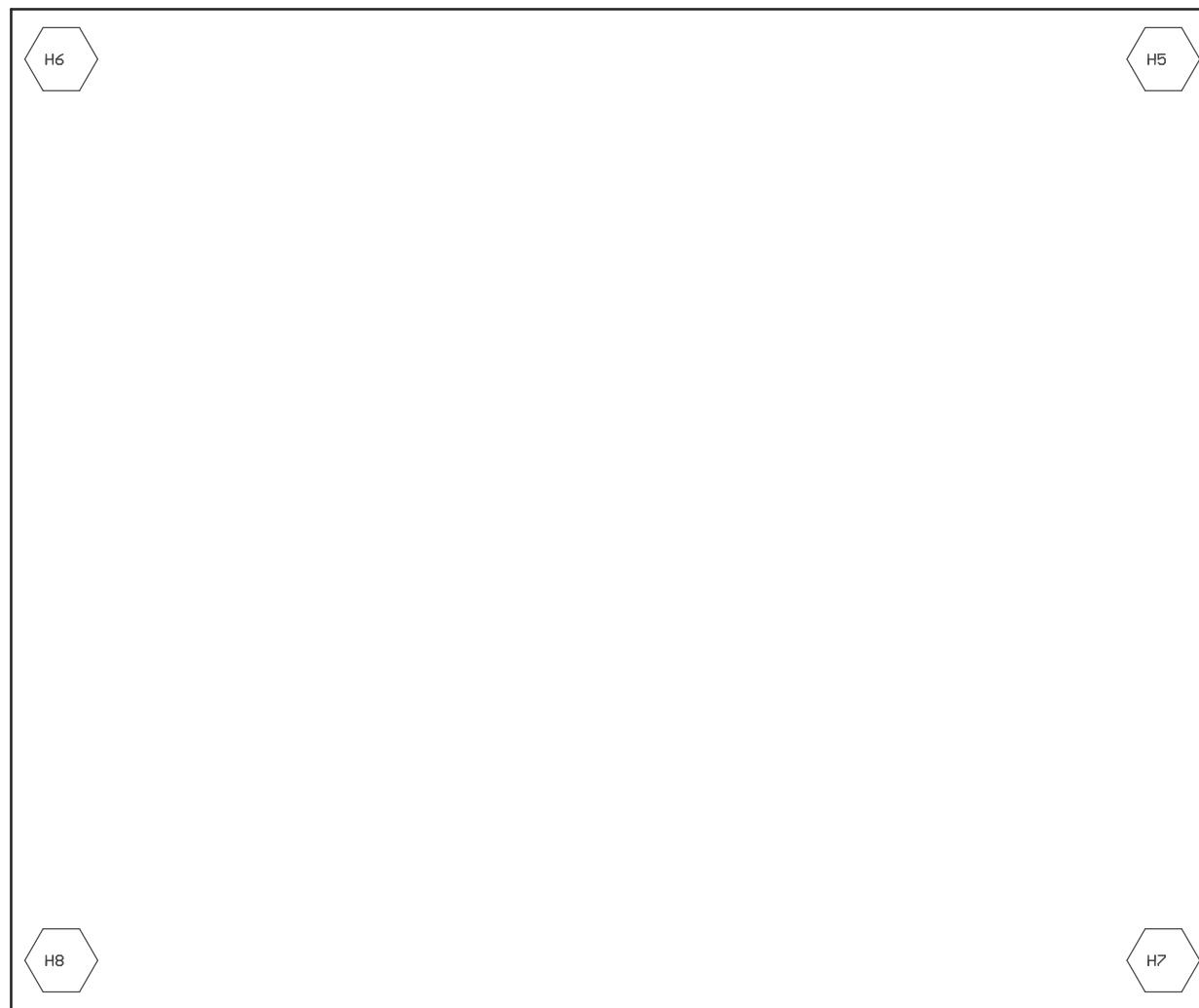


Z21 ■ These assemblies are ESD sensitive, ESD precautions shall be observed.
Z22 ■ These assemblies must be clean and free from flux and all contaminants. Use of no clean flux is not acceptable.
Z23 ■ These assemblies must comply with workmanship standards IPC-A-610 Class 2, unless otherwise specified.
Z24 ■ Install shunts as per the jumper configuration table in the PDF schematic.



COMPONENTS MARKED 'DNP' SHOULD NOT BE POPULATED.
ASSEMBLY VARIANT: 001

PCB VIEWED FROM TOP SIDE	BOARD #: SLHR008	REV: A	SUN REV: Not In VersionControl
	TID #: N/A		
PLOT NAME = Top Assembly Drawing	GENERATED : 11/30/2018 1:38:01 PM		TEXAS INSTRUMENTS



COMPONENTS MARKED 'DNP' SHOULD NOT BE POPULATED.
ASSEMBLY VARIANT: 001

PCB VIEWED FROM BOTTOM SIDE	BOARD #: SLHR008	REV: A	SUN REV: Not In VersionControl
	TID #: N/A		
PLOT NAME = Bottom Assembly Drawing	GENERATED : 11/30/2018 1:38:02 PM		TEXAS INSTRUMENTS