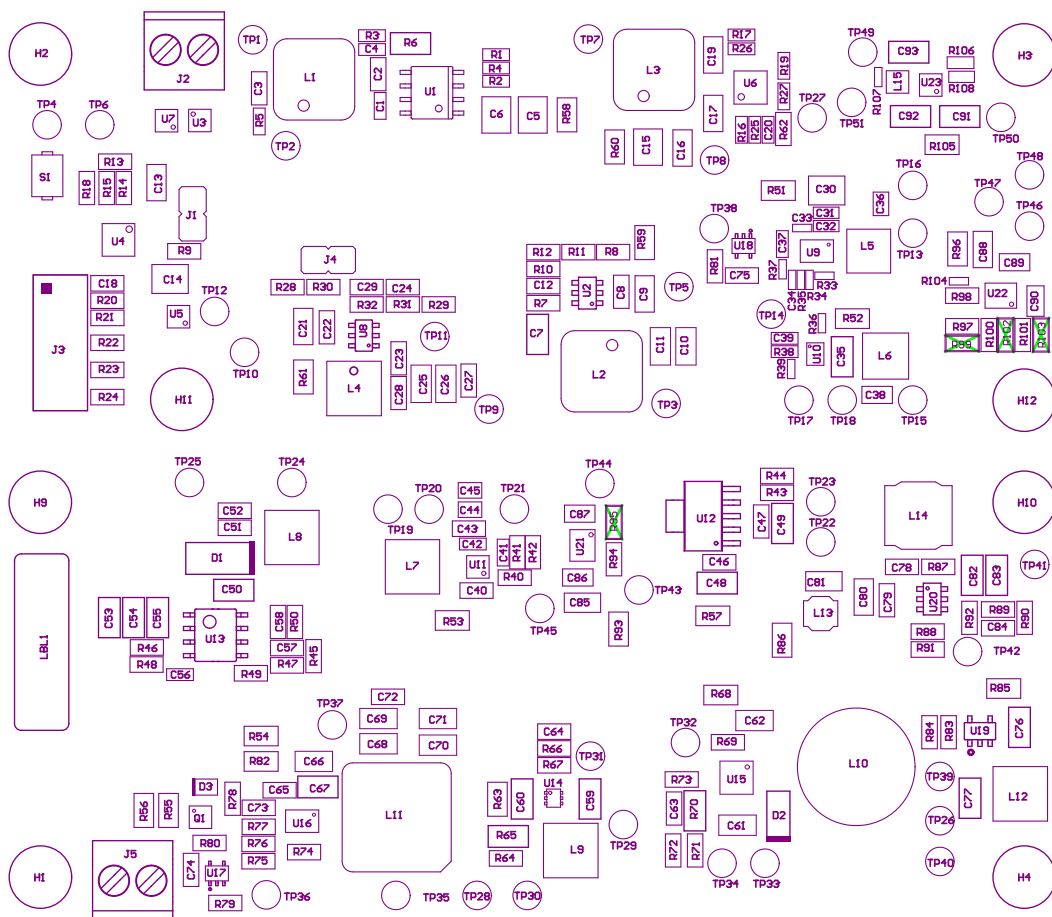


- Z21 ■ Install label in silkscreened box after final wash. Text shall be 8 pt font. Text shall be per the Label Table in the PDF schematic.
- Z22 ■ These assemblies are ESD sensitive, ESD precautions shall be observed.
- Z23 ■ These assemblies must be clean and free from flux and all contaminants. Use of no clean flux is not acceptable.
- Z24 ■ These assemblies must comply with workmanship standards IPC-A-610 Class 2, unless otherwise specified.



COMPONENTS MARKED 'DNP' SHOULD NOT BE POPULATED.

ASSEMBLY VARIANT:

001

PCB VIEWED FROM TOP SIDE	BOARD #: TIDA-010055-E1_Non-ISO_Communication_PS	REV: E1	SUN REV: Not In VersionControl
LAYER NAME = M5 Assembly Top	TID #: 010055		
PLOT NAME = Top LayerAssembly Drawing	GENERATED : 2/14/2019 3:40:20 PM		TEXAS INSTRUMENTS



Top Paste

PLOT NAME = Bottom Layer Assembly Drawing		GENERATED : 2/14/2018 3:40:20 PM	TEXAS INSTRUMENTS
LAYER NAME = M5 Assembly Bottom		TID #: 010088	
PCB VIEWED FROM BOTTOM SIDE		BOARD #: TIDA-010088-E1_Non-ISO_Communications	SUM REV: Not in Version Control

ASSEMBLY VARIANTS
OUT
COMPONENTS MARKED 'DNP' SHOULD NOT BE POPULATED.





Bottom Paste