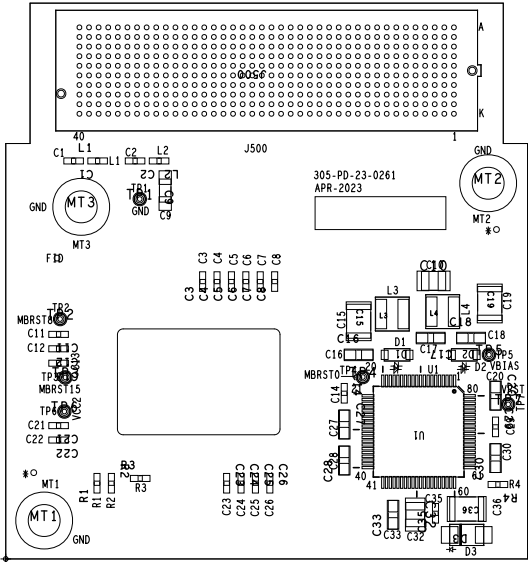


CUSTOMER NAME		TEXAS INSTRUMENTS		2	2
BOARD NAME			DESCRIPTION		
DLP550HE_DLP550JE_DLP650LE_Board_Rev1			ASSEMBLY SILK_BOTTOM		
BOARD NO.		REV	DATE		
305-PD-23-0261		1	APR 2023		



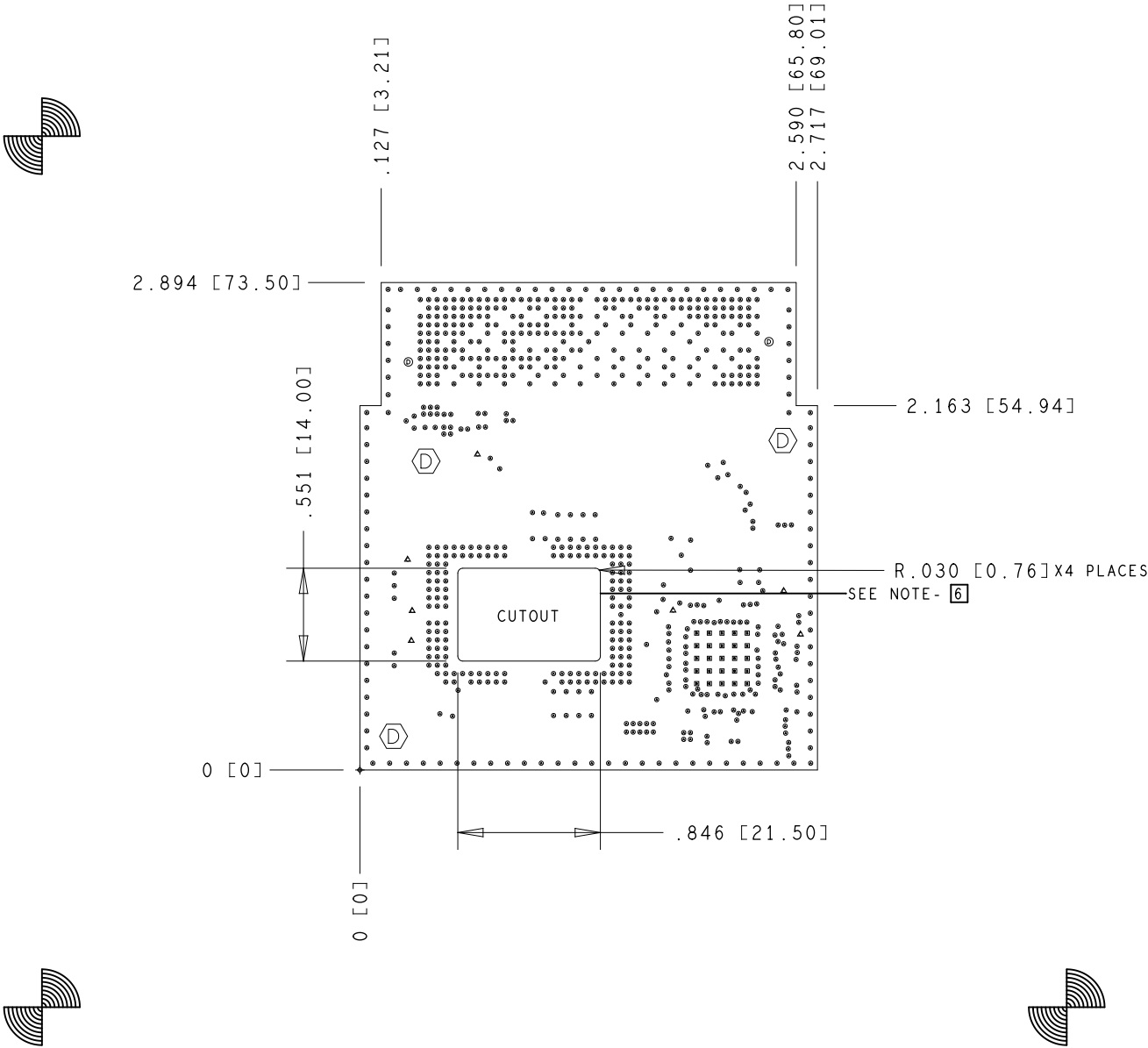
CUSTOMER NAME		TEXAS INSTRUMENTS		1	2
BOARD NAME			DESCRIPTION		
DLP550HE_DLP550JE_DLP650LE_Board_Rev1			ASSEMBLY SILK_TOP		
BOARD NO.		REV	DATE		
305-PD-23-0261		1	APR 2023		

FAB NOTES:

1. ALL DIMENSIONS ARE IN INCHES[MILLIMETERS] UNLESS OTHERWISE SPECIFIED
2. THE PWB SHALL BE FABRICATED TO IPC-6011 AND IPC-6012, CLASS 2, TYPE 3. WORKMANSHIP SHALL CONFORM TO IPC-A-600, CLASS 2, CURRENT REVISIONS.
3. BOARD MATERIAL -REFER STACKUP BOARD MATERIAL SHALL MEET OR EXCEED IPC-4101B. COLOR: NATURAL.
4. ALL BOARDS MUST MEET OR EXCEED UL94V - 0 REQUIREMENTS. PCB MUST BEAR THE UL94V - 0 UL REGISTERED MATERIAL ID NUMBER.
5. ELECTRICAL TEST MARKINGS SHOULD BE LEGIBLE, PERMANENT AND LOCATED ON THE SECONDARY SIDE OF THE BOARD AND WITHSTAND WAVE SOLDER. LOCATION SHOULD NOT BE UNDER COMPONENTS. UL LOGO AND 94V-0 FLAMMABILITY RATING SHOULD BE ETCHED ON THE SECONDARY SIDE OF THE BOARD.
6. IONIC CONTAMINATION LEVEL 10 uG/IN SQ MAXIMUM.
7. VERIFICATION OF GOLD AND NICKEL PLATING THICKNESS REQUIRED FOR EACH FABRICATION LOT.
8. MINIMUM COPPER WALL THICKNESS OF PLATED-THRU HOLES TO BE .001 INCH, WITH A MINIMUM ANNULAR RING OF .002 INCH.
9. OVERALL BOARD THICKNESS TO BE .063 INCHES +/- 10% AND APPLIES AFTER ALL LAMINATION AND PLATING PROCESSES, MEASURED FROM COPPER TO COPPER.
10. MAX. WARP & TWIST TO BE .005 INCHES PER INCH.
11. MAXIMUM RATED VOLTAGE BETWEEN CONDUCTORS SHALL BE 65 VOLTS PEAK.
12. NO BREAKOUT ALLOWED ON PLATED THROUGH HOLES.
13. ALL HOLES IN DRILL CHART ARE FINISHED HOLE SIZES (FHS)
14. NO VENDOR LOGO, ART WORKS SHOULD NOT BE CHANGED WITHOUT PRIOR APPROVAL FROM TEXAS INSTRUMENTS
15. TEARDROPS SHOULD NOT BE ADDED ON ANY AREA WITHOUT PRIOR APPROVAL FROM TEXAS INSTRUMENTS
16. SEE DETAIL A FOR IMPEDANCE REQUIREMENTS AND COPPER WEIGHTS
17. THIS IS A ROHS COMPLIANT BOARD

PROCESS NOTES:

1. EXCEPT AS NOTED BELOW, ALL EXPOSED CONDUCTORS ON BOTH SIDES OF THE PWB SHALL BE ELECTROLYTIC PLATED WITH MINIMUM 150 MICRO-INCHES OF NICKEL UNDER 5-15 MICRO-INCHES OF GOLD.
2. CLIP SILKSCREEN ON NO MASK AREA
3. APPLY LPI SOLDERMASK. SOLDERMASK SHALL CONFORM TO IPC-SM-840, CLASS H, CURRENT REV. COLOR: GREEN.
4. APPLY LPI SILKSCREEN OR EQUIVALENT PER THE ARTWORK. COLOR: WHITE.
5. BOARD MUST BE ELECTRICALLY TESTED USING SUPPLIED IPC-D-356 NETLIST.
6. NEED TO CUT THE BOARD AS PER MARKED DIMENSION
7. ALL 10 ,12.01 MIL VIAS NEED TO BE SOLDERMASK PLUGGING ON BOTTOM SIDE
8. REMOVE UNUSED PADS IN ALL INNER LAYERS
9. DEBURR ALL SHARP EDGES

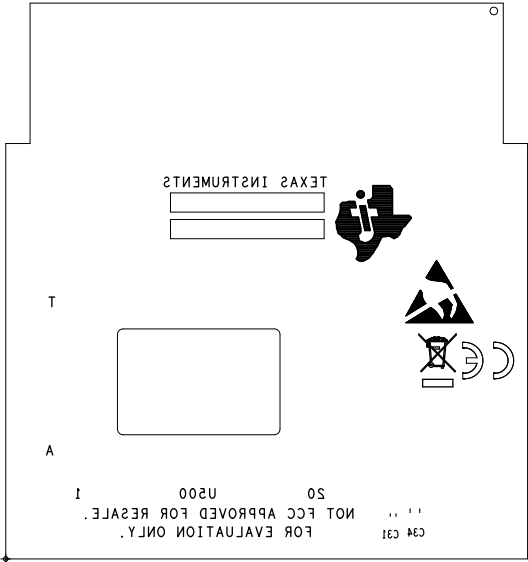


DRILL CHART: TOP to BOTTOM				
ALL UNITS ARE IN MILS				
FIGURE	SIZE	TOLERANCE	PLATED	QTY
•	10.0	+3.0/-3.0	PLATED	707
▪	12.01	+3.0/-3.0	PLATED	25
▲	24.02	+3.0/-3.0	PLATED	7
⊕	166.0	+3.0/-3.0	PLATED	3
⊗	50.0	+2.0/-0.0	NON-PLATED	2

DETAIL-A  
STACKUP: 8 LAYERS

		50ohm SINGLE ENDED IMPEDANCE CONTROL +/- 10%	100ohm DIFFERENTIAL IMPEDANCE CONTROL +/- 10%
TOP (0.5 oz + PLATING)		7.37 MIL	-----
IT-180A	DIELECTRIC (4.243 mils)		
02_PWR (2 oz)			
IT-180A	DIELECTRIC (7.087 mils)		
03_GND1 (2 oz)			
IT-180A	DIELECTRIC (6.423 mils)		
04_SIG1 (1 oz)		5.3 MIL	3.71/6.295 MIL
IT-180A	DIELECTRIC (7.087 mils)		
05_GND2 (2 oz)			
IT-180A	DIELECTRIC (6.423 mils)		
06_SIG2 (1 oz)		5.3 MIL	3.71/6.295 MIL
IT-180A	DIELECTRIC (7.087 mils)		
07_GND3 (2 oz)			
IT-180A	DIELECTRIC (4.653 mils)		
BOTTOM (0.5 oz + PLATING)		8.37 MIL	-----
TOTAL THICKNESS: 63 mils +/-10%			

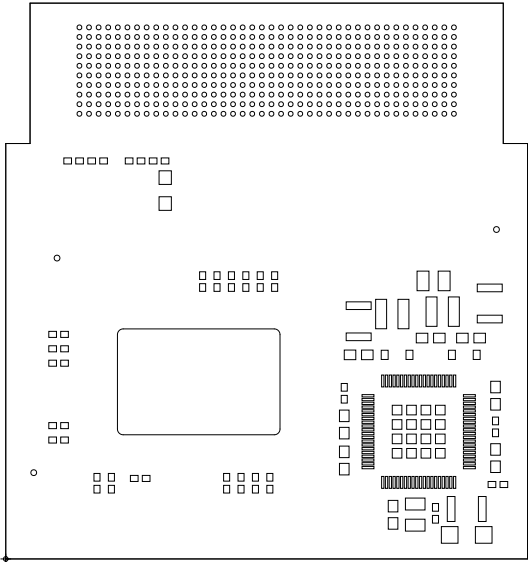
CUSTOMER NAME			
TEXAS INSTRUMENTS			
BOARD NAME		DESCRIPTION	
DLP550HE_DLP550JE_DLP650LE_Board_Rev1		FAB	
BOARD NO.	REV	DATE	
305-PD-23-0261	1	APR 2023	



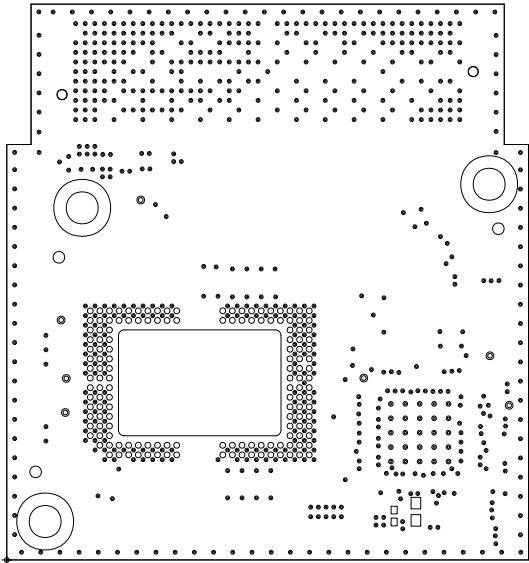
CUSTOMER NAME		TEXAS INSTRUMENTS	
BOARD NAME		DESCRIPTION	
DLP550HE_DLP550JE_DLP650LE_Board_Rev1		SILK_BOTTOM	
BOARD NO.	REV	DATE	
305-PD-23-0261	1	APR 2023	



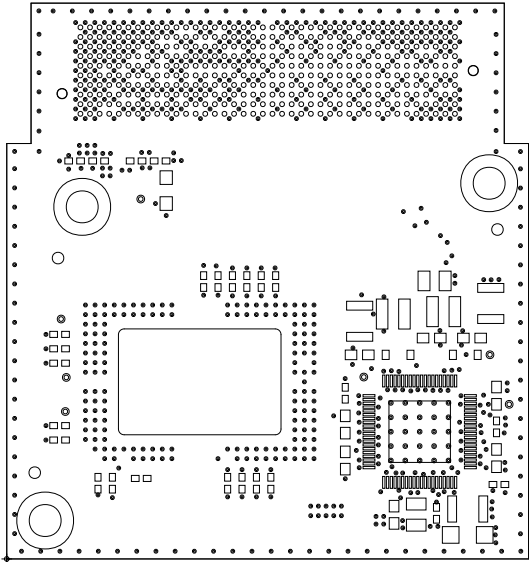
CUSTOMER NAME				TEXAS INSTRUMENTS			
BOARD NAME				DESCRIPTION			
DLP550HE_DLP550JE_DLP650LE_Board_Rev1				SILK_TOP			
BOARD NO.		REV	DATE				
305-PD-23-0261		1	APR 2023				



CUSTOMER NAME		TEXAS INSTRUMENTS	
BOARD NAME DLP550HE_DLP550JE_DLP650LE_Board_Rev1		DESCRIPTION PASTE_TOP	
BOARD NO. 305-PD-23-0261	REV 1	DATE APR 2023	



CUSTOMER NAME		TEXAS INSTRUMENTS	
BOARD NAME DLP550HE_DLP550JE_DLP650LE_Board_Rev1		DESCRIPTION MASK_BOTTOM	
BOARD NO. 305-PD-23-0261	REV 1	DATE APR 2023	

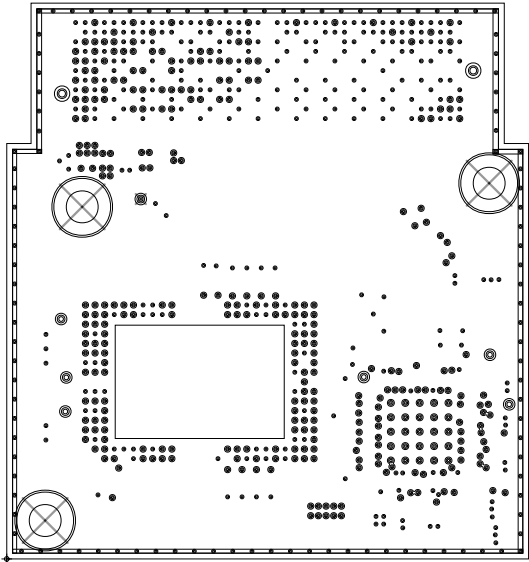


CUSTOMER NAME		TEXAS INSTRUMENTS	
BOARD NAME		DESCRIPTION	
DLP550HE_DLP550JE_DLP650LE_Board_Rev1		MASK_TOP	
BOARD NO.	REV	DATE	
305-PD-23-0261	1	APR 2023	

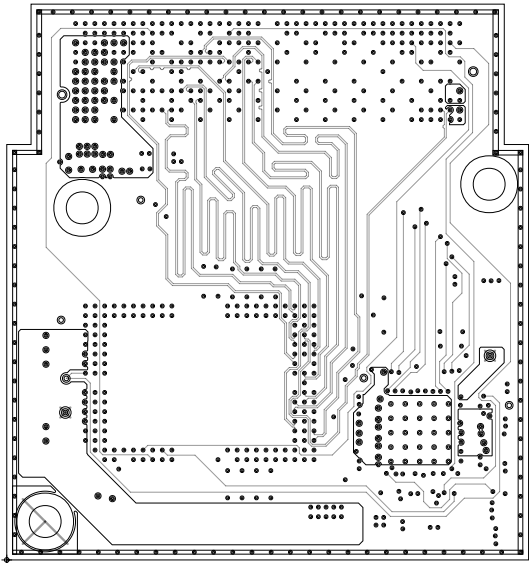




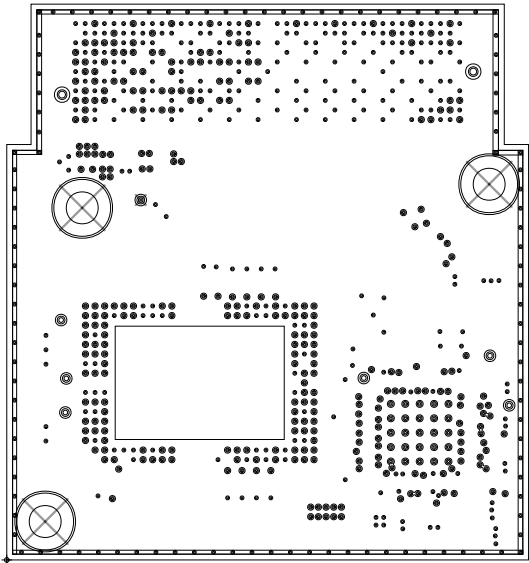
ART FILM - 08\_BOTTOM



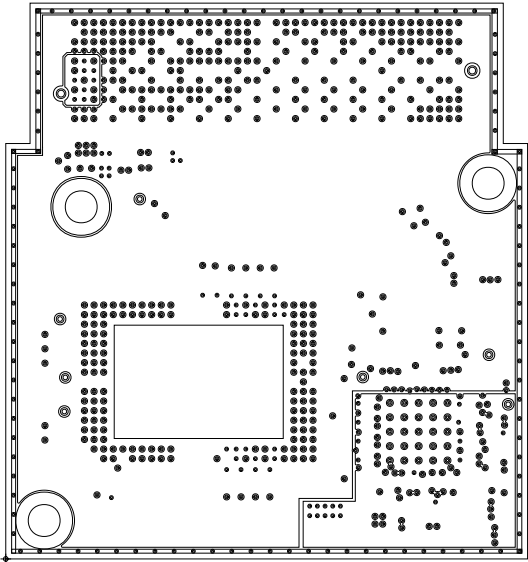
CUSTOMER NAME		TEXAS INSTRUMENTS	
BOARD NAME		DESCRIPTION	
DLP550HE_DLP550JE_DLP650LE_Board_Rev1		05_GND2	
BOARD NO.	REV	DATE	
305-PD-23-0261	1	APR 2023	



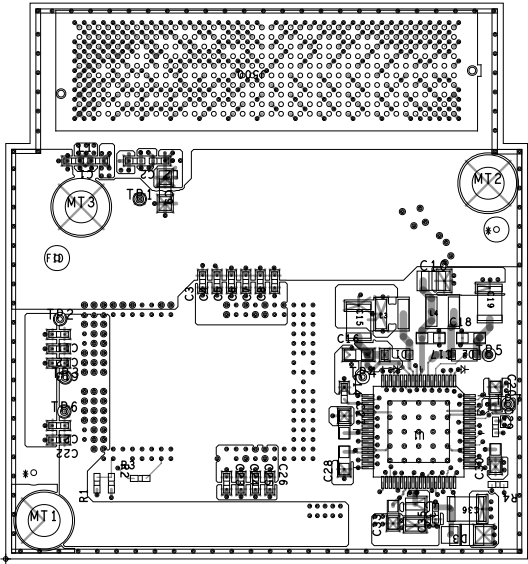
CUSTOMER NAME		TEXAS INSTRUMENTS	
BOARD NAME		DESCRIPTION	
DLP550HE_DLP550JE_DLP650LE_Board_Rev1		04_SIG1	
BOARD NO.	REV	DATE	
305-PD-23-0261	1	APR 2023	



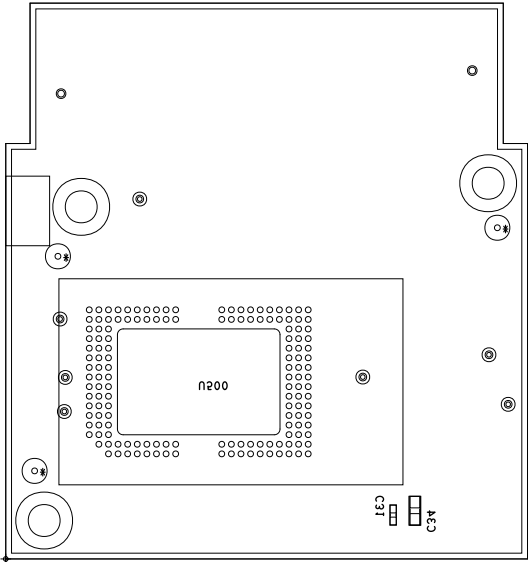
CUSTOMER NAME		TEXAS INSTRUMENTS			
BOARD NAME			DESCRIPTION		
DLP550HE_DLP550JE_DLP650LE_Board_Rev1			03_GND1		
BOARD NO.		REV	DATE		
305-PD-23-0261		1	APR 2023		



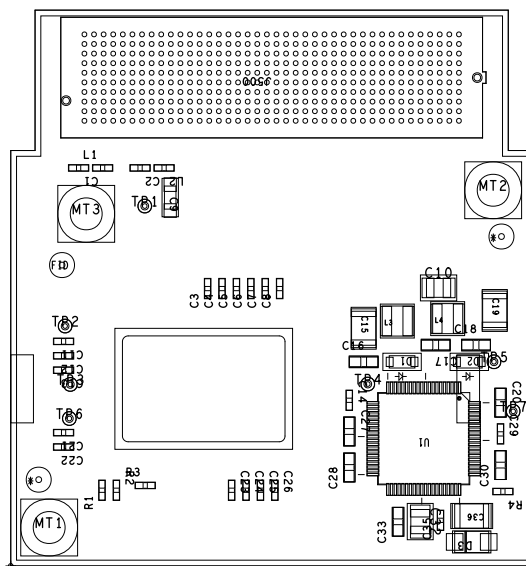
CUSTOMER NAME		TEXAS INSTRUMENTS			
BOARD NAME			DESCRIPTION		
DLP550HE_DLP550JE_DLP650LE_Board_Rev1			02_PWR		
BOARD NO.		REV	DATE		
305-PD-23-0261		1	APR 2023		



CUSTOMER NAME		TEXAS INSTRUMENTS		1	2
BOARD NAME			DESCRIPTION		
DLP550HE_DLP550JE_DLP650LE_Board_Rev1			ASSEMBLY 01_TOP		
BOARD NO.		REV	DATE		
305-PD-23-0261		1	APR 2023		

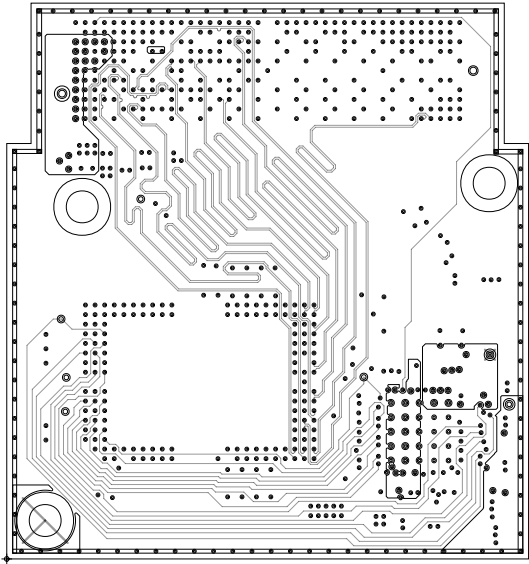


CUSTOMER NAME		TEXAS INSTRUMENTS		2	2
BOARD NAME			DESCRIPTION		
DLP550HE_DLP550JE_DLP650LE_Board_Rev1			ASSEMBLY		
BOARD NO.		REV	DATE		
305-PD-23-0261		1	APR 2023		

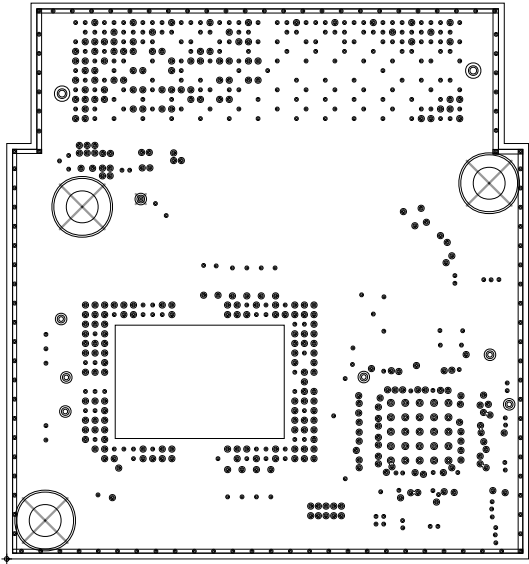


CUSTOMER NAME		TEXAS INSTRUMENTS		1	2
BOARD NAME			DESCRIPTION		
DLP550HE_DLP550JE_DLP650LE_Board_Rev1			ASSEMBLY		
BOARD NO.		REV	DATE		
305-PD-23-0261		1	APR 2023		

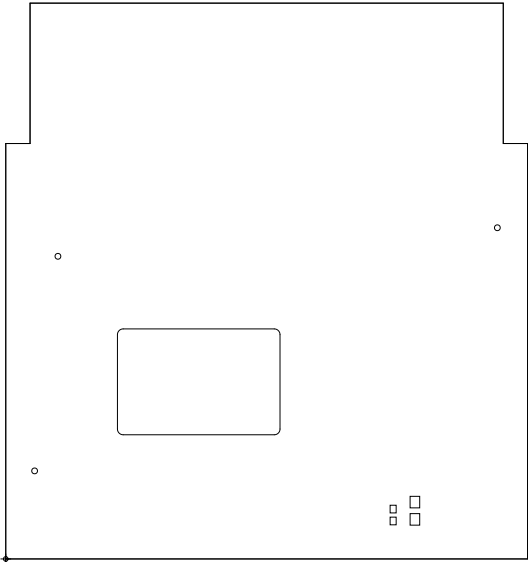




CUSTOMER NAME		TEXAS INSTRUMENTS	
BOARD NAME		DESCRIPTION	
DLP550HE_DLP550JE_DLP650LE_Board_Rev1		06_SIG2	
BOARD NO.	REV	DATE	
305-PD-23-0261	1	APR 2023	



CUSTOMER NAME		TEXAS INSTRUMENTS	
BOARD NAME		DESCRIPTION	
DLP550HE_DLP550JE_DLP650LE_Board_Rev1		07_GND3	
BOARD NO.	REV	DATE	
305-PD-23-0261	1	APR 2023	



CUSTOMER NAME		TEXAS INSTRUMENTS	
BOARD NAME DLP550HE_DLP550JE_DLP650LE_Board_Rev1		DESCRIPTION PASTE_BOTTOM	
BOARD NO. 305-PD-23-0261	REV 1	DATE APR 2023	