

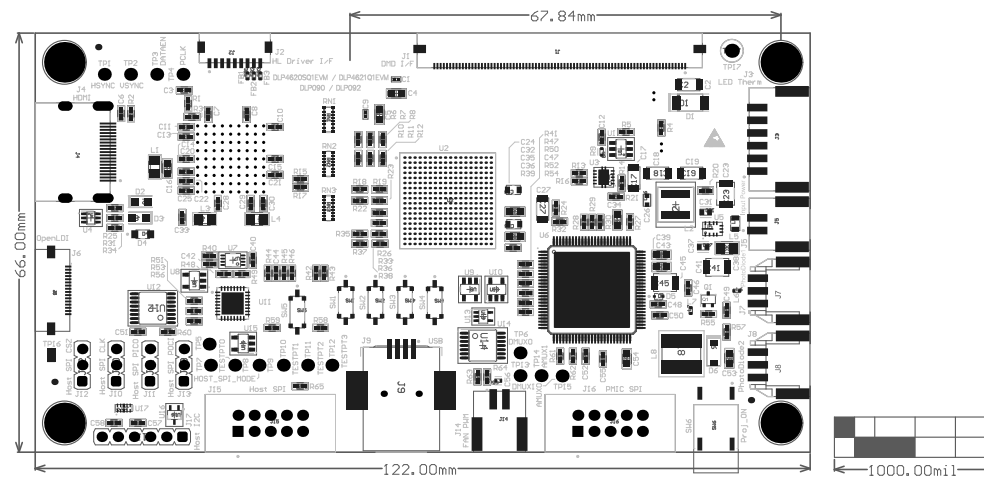
Z21 ■Install label in silkscreened box after final wash. Text shall be 8 pt font. Text shall be per the Label Table in the PDF schematic.

Z22 ■These assemblies are ESD sensitive, ESD precautions shall be observed.

Z23 ■These assemblies must be clean and free from flux and all contaminants. Use of no clean flux is not acceptable.

Z24 ■These assemblies must comply with workmanship standards IPC-A-610 Class 2, unless otherwise specified.

Z25 ■Indication provided for the D* components at their cathode side.



COMPONENTS MARKED 'DNP' SHOULD NOT BE POPULATED.
ASSEMBLY VARIANT: [No Variations]

PCB VIEWED FROM TOP SIDE	BOARD #: .PRJ_Number	REV: .PCB_Rev	SUN REV: Not in version control
M3996-00169-Top M3996-00169-Top	TID #: .TID		
PLOT NAME = Top LayerAssembly Drawing	GENERATED : 1/25/2024	2:02:30 PM	TEXAS INSTRUMENTS

PLOT NAME = Bottom Layer Assembly Drawing GENERATED : 1\28\2024 2:03:31 PM	TEKAS INSTRUMENTS
TID # : TID	Bottom
PCB VIEWED FROM BOTTOM SIDE	BOARD # : PRI_Number REV: PCB Rev VUN REV: Not in version control

ASSEMBLY VARIANT: [No Variants]
COMPONENTS MARKED 'DNP', SHOULD NOT BE POPULATED.

