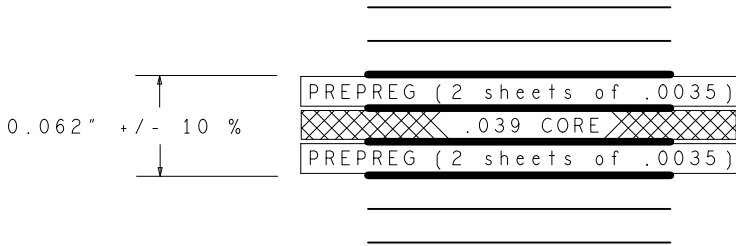


LAYER STACKUP



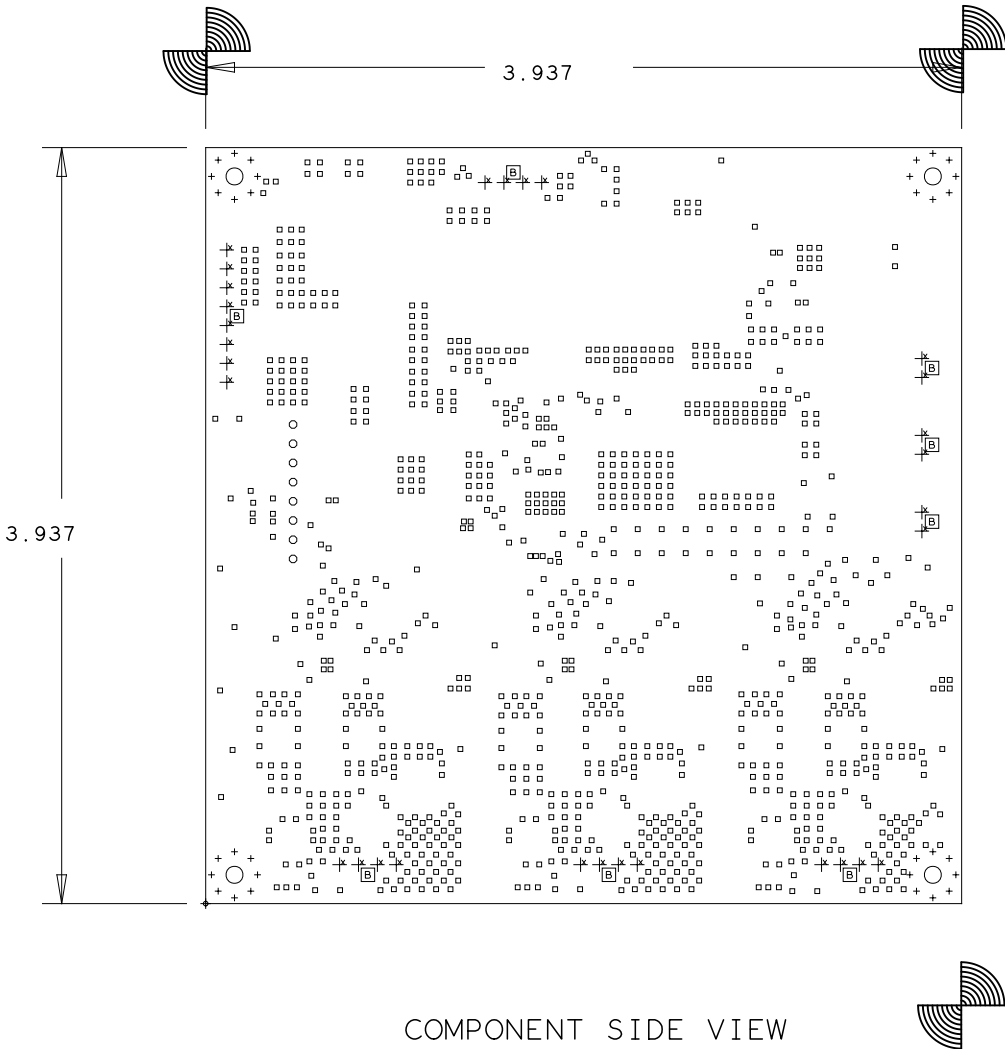
LAYER DEFINITION	FINISH Cu WT.
SILKSCREEN PRIMARY SIDE	
SOLDERMASK PRIMARY SIDE	
LAYER 1 PRIMARY SIDE	2 oz
LAYER 2 (GND)	2 oz
LAYER 3 (PWR)	2 oz
LAYER 4 SECONDARY SIDE	2 oz
SOLDERMASK SECONDARY SIDE	
SILKSCREEN SECONDARY SIDE	

FAB NOTES:

- ALL DIMENSIONS ARE IN INCHES UNLESS OTHERWISE NOTED. ALL BOARD OUTLINE DIMENSION TOLERANCES ARE +/- .010".
- THE PWB SHALL BE FABRICATED TO IPC-6012, CLASS 2 AND WORKMANSHIP SHALL CONFORM TO IPC-A-600, CLASS 2. CURRENT REVISIONS.
- BOARD MATERIAL SHALL BE 180 Tg/340 Td ISOLA FR-370HR OR EQUIVALENT, RoHS COMPLIANT AND LEAD FREE ASSEMBLY CAPABLE. BOARD MATERIAL SHALL MEET OR EXCEED IPC-4101B. RoHS CERTIFICATE OF CONFORMANCE SHALL BE DELIVERED WITH EACH LOT.
- THE BOARD NEEDS TO BE CONSTRUCTED AND MARKED WITH UL94V-0 FLAME-RETARDANT MATERIAL.
- MINIMUM COPPER WALL THICKNESS OF PLATED-THRU HOLES TO BE .001 INCH, WITH A MINIMUM ANNULAR RING OF .001 INCH.
- OVERALL BOARD THICKNESS TO BE .062 +/- 10% AND APPLIES AFTER ALL LAMINATION AND PLATING PROCESSES, MEASURED FROM COPPER TO COPPER.
- MAX. WARP & TWIST TO BE .0075 INCHES PER INCH.
- BOARD MUST BE ELECTRICALLY TESTED USING SUPPLIED IPC-D-356 NETLIST.

PROCESS NOTES:

- PLATE ALL EXPOSED AREAS WITH ELECTROLESS IMMERSION GOLD, NICKEL 100 MIN MICROINCHES THK GOLD 2-6 MICROINCHES THK.
- APPLY LPI SOLDERMASK OVER BARE COPPER (SMOBC), COLOR: RED. SOLDERMASK SHALL CONFORM TO IPC-SM-840, CLASS H. CURRENT REV. VIAS ARE TENTED OVER ON TOP SIDE ONLY (DESIGN INTENT).
- FABRICATION VENDOR IS ALLOWED TO INCREASE SOLDERMASK COMPONENT PADS BY A MAXIMUM 1 MIL ON EACH SIDE OVER THE COPPER PAD IN ORDER TO MEET TOOLING REQUIREMENTS WHILE MAINTAINING WEBBING BETWEEN ADJACENT PADS.
- APPLY LPI SILKSCREEN OR EQUIVALENT PER THE ARTWORK. TOP SIDE ONLY, COLOR: WHITE.



DRILL CHART: TOP to BOTTOM

ALL UNITS ARE IN MILS

FIGURE	SIZE(Finished)	TOLERANCE	PLATING	QTY
	12.0	+0.0/-12.0	PLATED	1064
	14.0	+3.0/-3.0	PLATED	32
	42.0	+3.0/-3.0	PLATED	8
	47.24	+1.97/-1.97	PLATED	30
	157.0	+3.0/-3.0	PLATED	4
	51.18	+1.97/-1.97	NON-PLATED	8

COMPONENT SIDE VIEW

BOARD NAME			
DLP5531-Q1 EVM HEADLIGHT DRIVER		DESCRIPTION	
		FABRICATION DRAWING	
	DATE	PRJ#	
	01 MAR 2018		10 OF 10