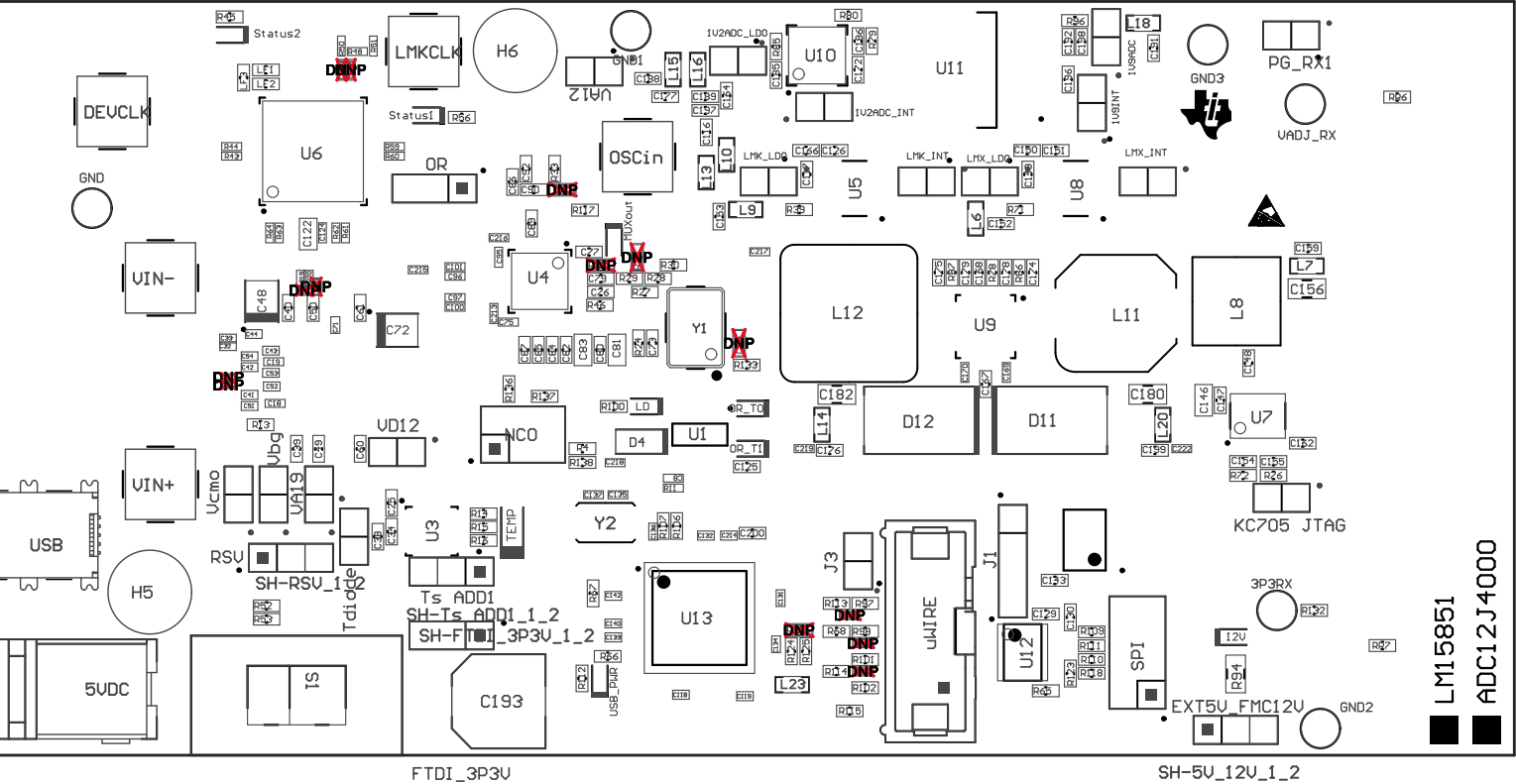
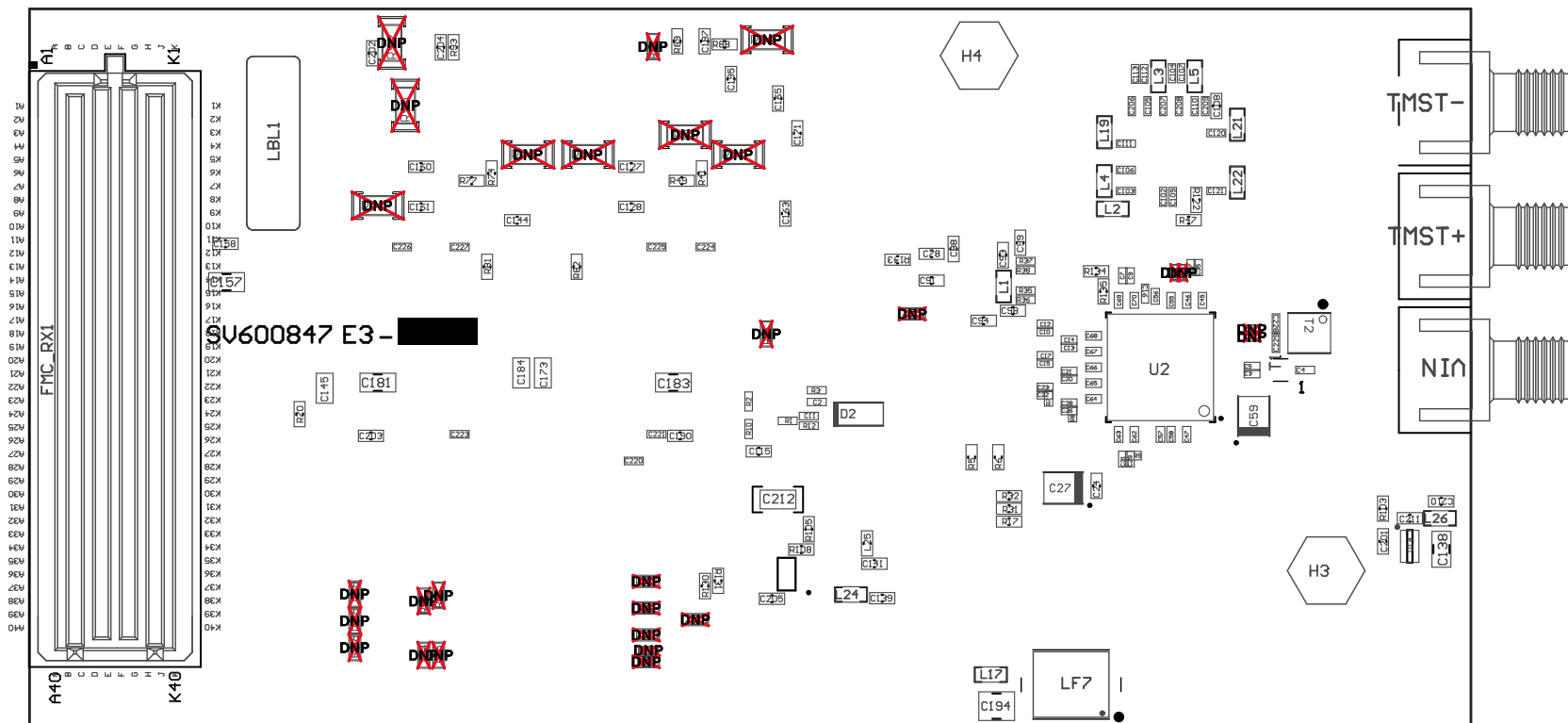


- Z21 ■Install label in silkscreened box after final wash. Text shall be 8 pt font. Text shall be per Table 1
- Z22 ■These assemblies are ESD sensitive, ESD precautions shall be observed.
- Z23 ■These assemblies must be clean and free from flux and all contaminants. Use of no clean flux is not acceptable.
- Z24 ■These assemblies must comply with workmanship standards IPC-A-610 Class 2., unless otherwise specified.

SH-LMX_LDO1_2
SH-LMK_INT1_2
SH-LMK_LDO1_2
SH-1V2ADC_INT1_2
SH-1V2ADC_LDO1_2
SH-LMX_INT1_2
SH-1V9ADC1_2
SH-1V9INT1_2





COMPONENTS MARKED 'DNP' SHOULD NOT BE POPULATED, AND MAY NOT BE IN BILL OF MATERIALS
 ASSEMBLY VARIANT: 001

PCB VIEWED FROM BOTTOM SIDE	BOARD #: SU600847	REV: E3	SUN REV: Not In VersionControl
	IGNORE -> Bottom Overlay		
PLOT NAME = Bottom Assembly Drawing	GENERATED : 11/26/2013 3:23:10 PM		TEXAS INSTRUMENTS