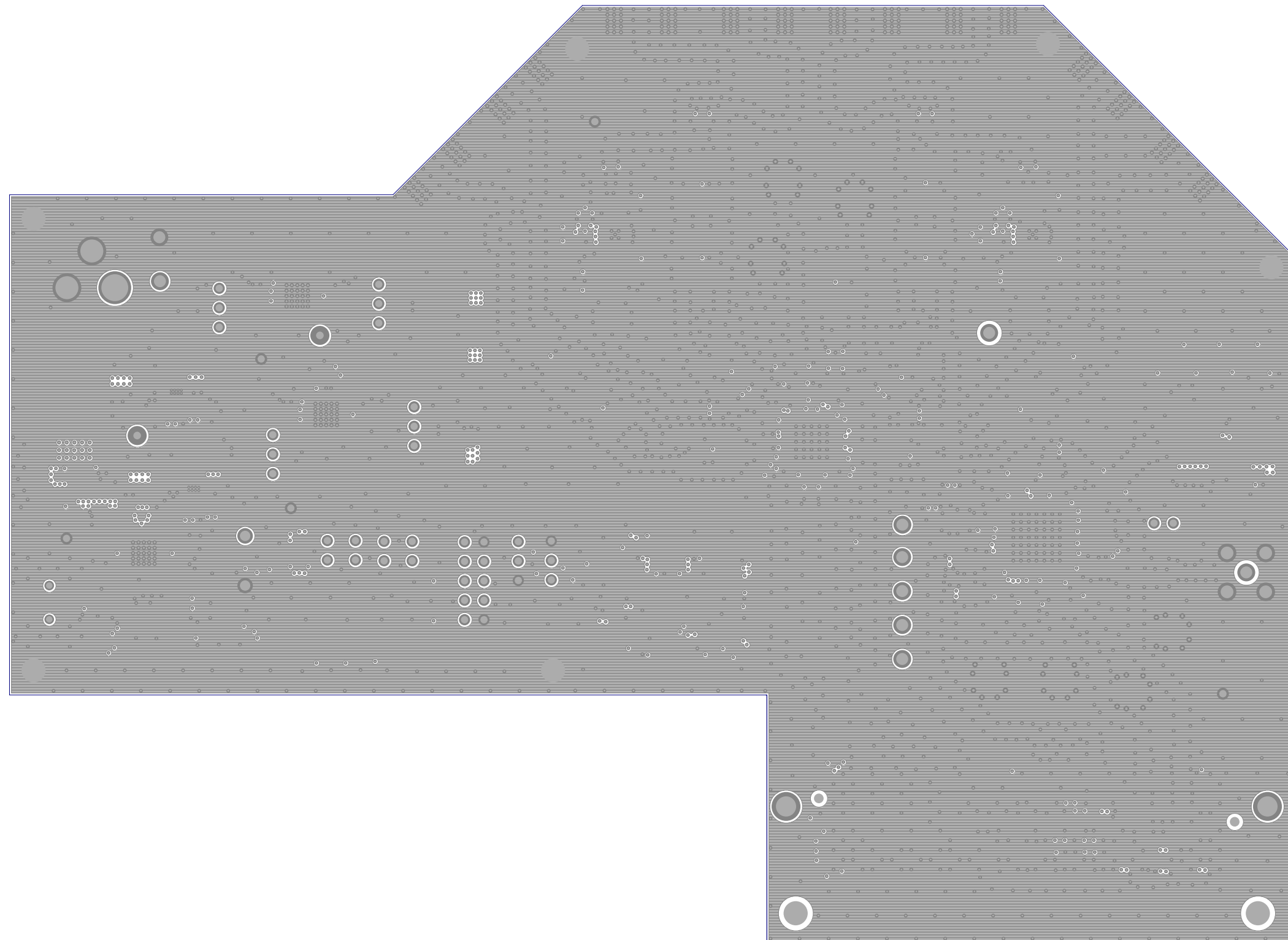
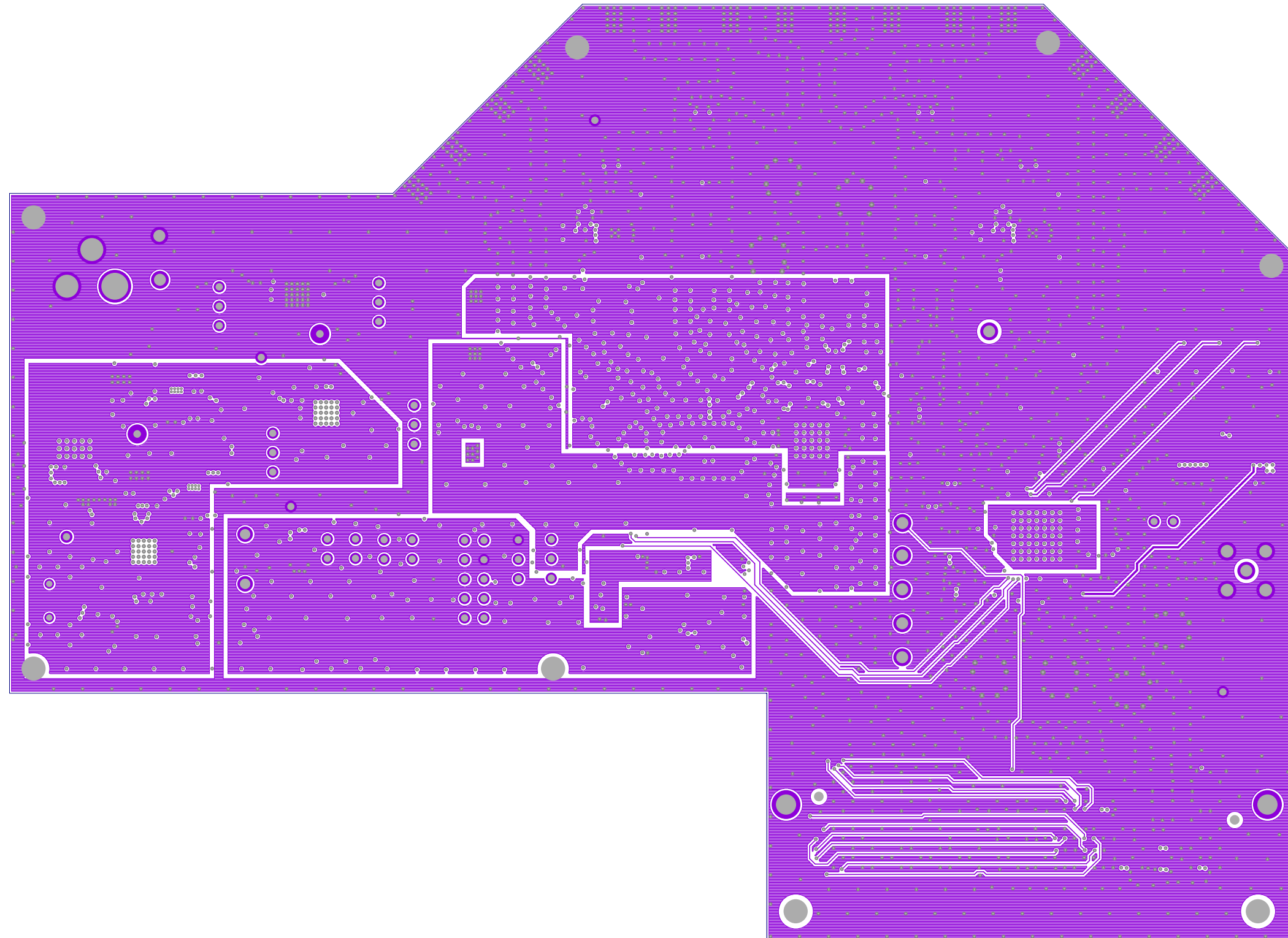


ADC3XJXXVM REV C  
SOMSCREENSTOP LYR 1

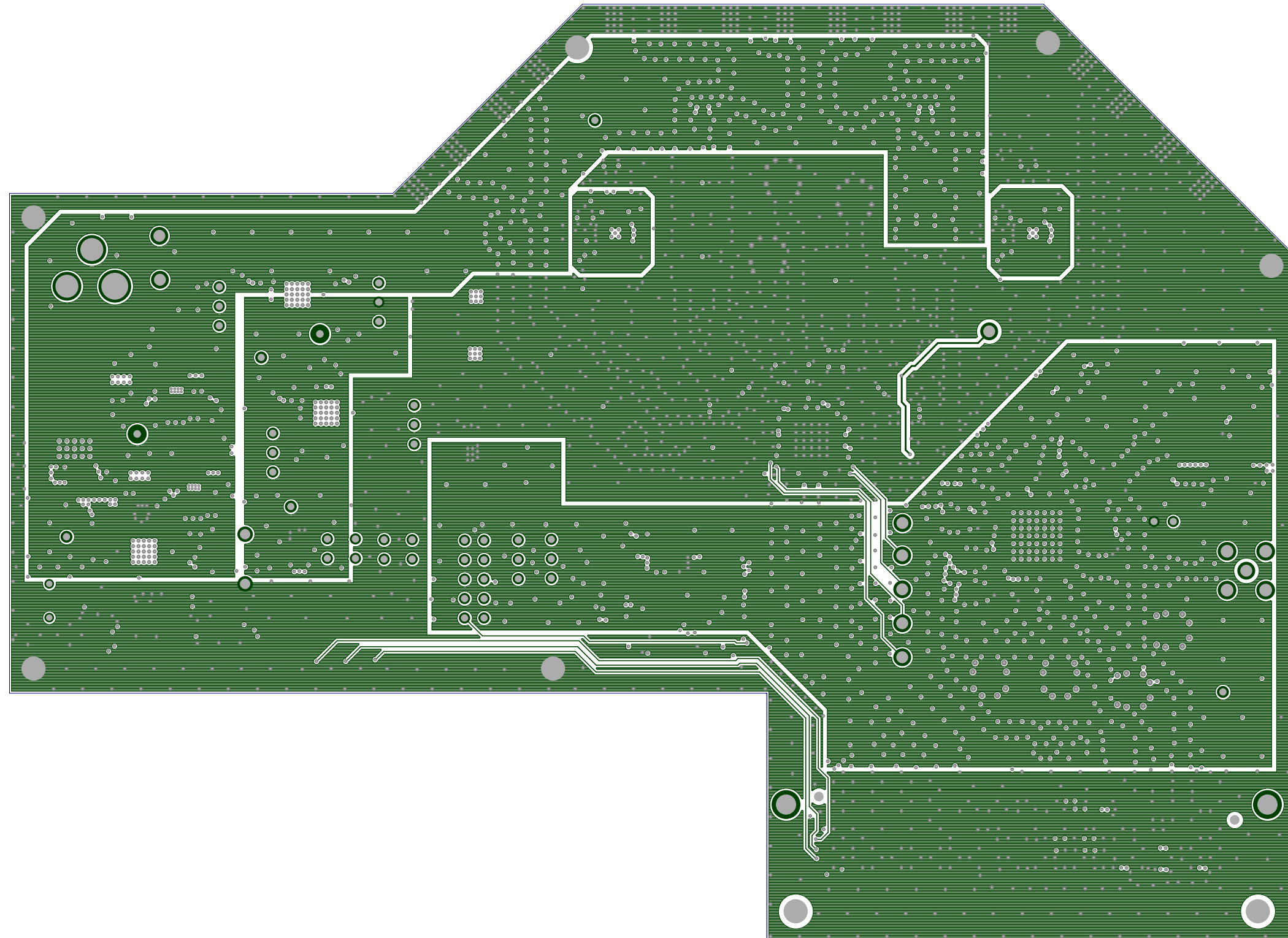


ADC3XJXXVM REV C  
LAYER 2 ( GND1 )

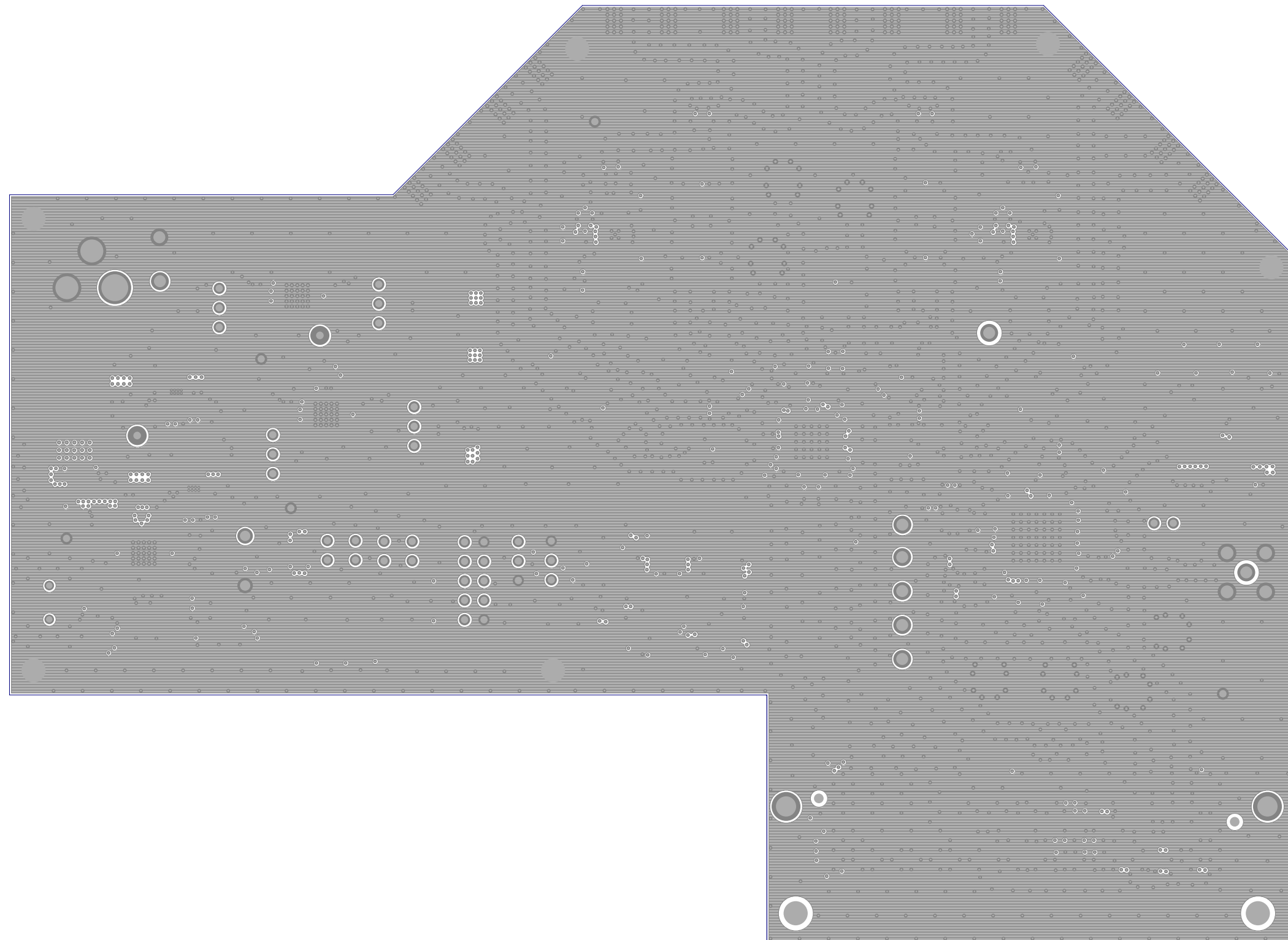


ADC3XJXXVM REV C  
LAYER 3 (PWR1)





ADC3XJXXVM REV C  
LAYER 4 ( PWR2 )



ADC3XJXXVM REV C  
LAYER 5 ( GND2 )



**UNLESS OTHERWISE SPECIFIED, ALL NOTES ARE APPLICABLE.**

1. APPLICATION DESIGN, MANUFACTURING AND INSPECTION DOCUMENTS.  
IPC-2221A & IPC-2222 / DESIGN STANDARD FOR RIGID PRINTED CIRCUIT BOARDS AND RIGID PRINTED BOARD ASSEMBLIES.  
IPC-6012B / QUALIFICATION AND PERFORMANCE SPECIFICATION FOR RIGID PRINTED BOARD.  
IPC-A-600G / ACCEPTABILITY OF PRINTED BOARDS.

2. VIAS, 10 & 12mil HOLES, SIZE APPLY AFTER PLATING. TOLERANCE TO BE +.003/- .010. HOLE SIZE APPLY AFTER PLATING. TOLERANCE TO BE +/- .003.

3. REGISTRATION TOLERANCE: ARTWORK +/- .002.  
ALL HOLE CENTERS +/- .005 FROM DIMENSION DATUM.

4. MINIMUM COPPER WALL THICKNESS SHALL BE .001 INCH.  
FOR ALL PLATED THROUGH HOLES. BREAKOUT NOT ALLOWED.

5. PROCESS AND MATERIAL MUST CONFORM TO UL 796. MATERIAL MUST MEET OR EXCEED UL FLAMMABILITY RATING 94V-0.  
MATERIAL: MULTI-LAYER (SEE DETAIL 'A')  
SEE LAYER STACKUP FOR ALL PRE-PREG & CORE THICKNESSES, COPPER OZ AND MATERIAL. FINISHED BOARD THICKNESS: .062 +/- 10%

6. MANUFACTURE'S UL MARKING, FLAMMABILITY RATING, LOGO AND DATE CODE TO BE PLACED IN SILKSCREEN ON BOTTOM SIDE OF THE BOARD.

7. SMOBC/IMMERSSION GOLD: 2 - 8 uIN OVER 118-236 uIN NICKEL PLATING.

8. SOLDERMASK BOTH SIDES USING TAIYO (OR EQUIVALENT)  
COLOR = RED (0.001 TO .002" THICK OVER METAL).

9. SILKSCREEN BOTH SIDES USING WHITE NP1 LEADFREE.  
REGISTRATION TOLERANCE TO BE +/- .005.  
INK IS NOT ALLOWED ON EXPOSED PLATED AREA.

10. P.C. BOARD TO BE FREE OF DIRT, OIL, FINGER PRINTS, ETC.

11. BOARD WARPAGE: WARP AND TWIST SHALL NOT EXCEED .007 INCH PER INCH MEASURED AT ANY LOCATION OR DIRECTION ON THE BOARD.

12. BOARD MUST BE 100% ELECTRICALLY TESTED TO ENSURE NO SHORTS OR OPEN CIRCUITS AT 20V.

13. ALL OUTER LAYERS USING A 19MIL TRACE WIDTH SHALL BE 50 OHMS SINGLE ENDED +/- 10%.

14. ALL OUTER LAYERS USING A 8.5MIL TRACE WIDTH AND 6.5MIL SPACING SHALL BE 100 OHMS DIFFERENTIAL +/- 10%.

15. MINIMUM COPPER CONDUCTOR WIDTH IS: 5MIL.  
MINIMUM COPPER CONDUCTOR SPACING IS: 4.5MIL.

16. ALL INNER LAYER UNCONNECTED PADS SHALL BE REMOVED.

17. PWB MUST BE ROHS COMPLIANT AND SURVIVE LEAD FREE ASSEMBLY.  
MAX REFLOW OF 260 DEGREES C (6 PASSES).

**REVISIONS**

ZONE	LTR	DESCRIPTION	DATE	APPROVED

**DRILL CHART: TOP to BOTTOM  
ALL UNITS ARE IN MILS**

FIGURE	SIZE	PLATED	QTY
-	8.0	PLATED	16
-	10.0	PLATED	2572
*	12.0	PLATED	330
*	15.0	PLATED	56
*	38.0	PLATED	5
*	38.0	PLATED	38
*	40.0	PLATED	2
o	55.0	PLATED	2
o	62.0	PLATED	9
o	67.0	PLATED	4
●	106.0	PLATED	2
@	120.0	PLATED	2
Y	125.0	PLATED	6
O	140.0	PLATED	1
*	35.0	NON-PLATED	2
v	50.0	NON-PLATED	2
D	125.0	NON-PLATED	2

**USE DDI'S STACKUP PART NUMBER ADS42JB69A-2**

**LAYER 1**: TOP  
**Copper Foil 1oz MIN FINISHED COPPER**

**LAYER 2**: 370HR  
**Pre-preg .010"**

**LAYER 3**: 370HR  
**Core 0.006" 1.0oz Layer 2 & 3**

**LAYER 4**: 370HR  
**Pre-preg .020"**

**LAYER 5**: 370HR  
**Core 0.006" 1.0oz Layer 4 & 5**

**LAYER 6**: 370HR  
**Pre-preg .010"**

**BOTTOM**: Copper Foil 1oz MIN FINISHED COPPER

**CONTRACT NO.**

**APPROVALS**

APPROVALS	DATE
DRAWN L NGUYEN	07-08-14
ENG KEN CHAN	

**MATERIAL**: SEE NOTE 5

**FINISH**: SEE NOTE 7, 8, 9

**DO NOT SCALE DRAWING**

**TEXAS INSTRUMENTS INC.**

**FABRICATION DRAWING  
ADC3XJXX EVM**

**SIZE**: D

**CODE IDENT NO.**

**DRAWING NO.**

**REV.**: C

**SHEET 1 OF 1**