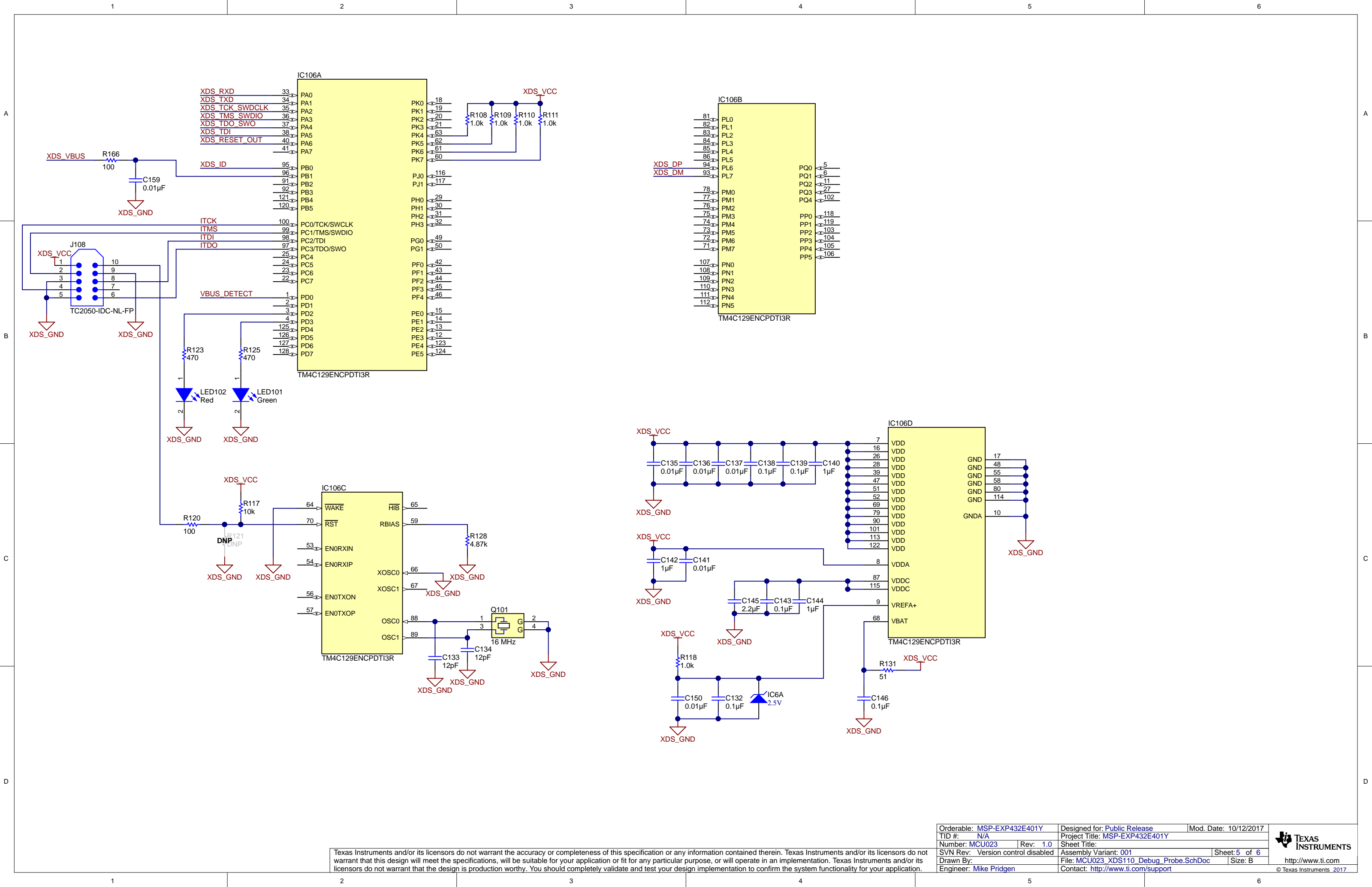


Texas Instruments and/or its licensors do not warrant the accuracy or completeness of this specification or any information contained therein. Texas Instruments and/or its licensors do not warrant that this design will meet the specifications, will be suitable for your application or fit for any particular purpose, or will operate in an implementation. Texas Instruments and/or its licensors do not warrant that the design is production worthy. You should completely validate and test your design implementation to confirm the system functionality for your application.



Texas Instruments and/or its licensors do not warrant the accuracy or completeness of this specification or any information contained therein. Texas Instruments and/or its licensors do not warrant that this design will meet the specifications, will be suitable for your application or fit for any particular purpose, or will operate in an implementation. Texas Instruments and/or its licensors do not warrant that the design is production worthy. You should completely validate and test your design implementation to confirm the system functionality for your application.

Orderable: MSP-EXP432E401Y	Designed for: Public Release	Mod. Date: 10/12/2017
TID #: N/A	Project Title: MSP-EXP432E401Y	
Number: MCU023	Rev: 1.0	Sheet: 5 of 6
SVN Rev: Version control disabled	Assembly Variant: 001	Size: B
Drawn By:	File: MCU023_XDS110_Debug_Probe.SchDoc	
Engineer: Mike Pridgen	Contact: http://www.ti.com/support	

