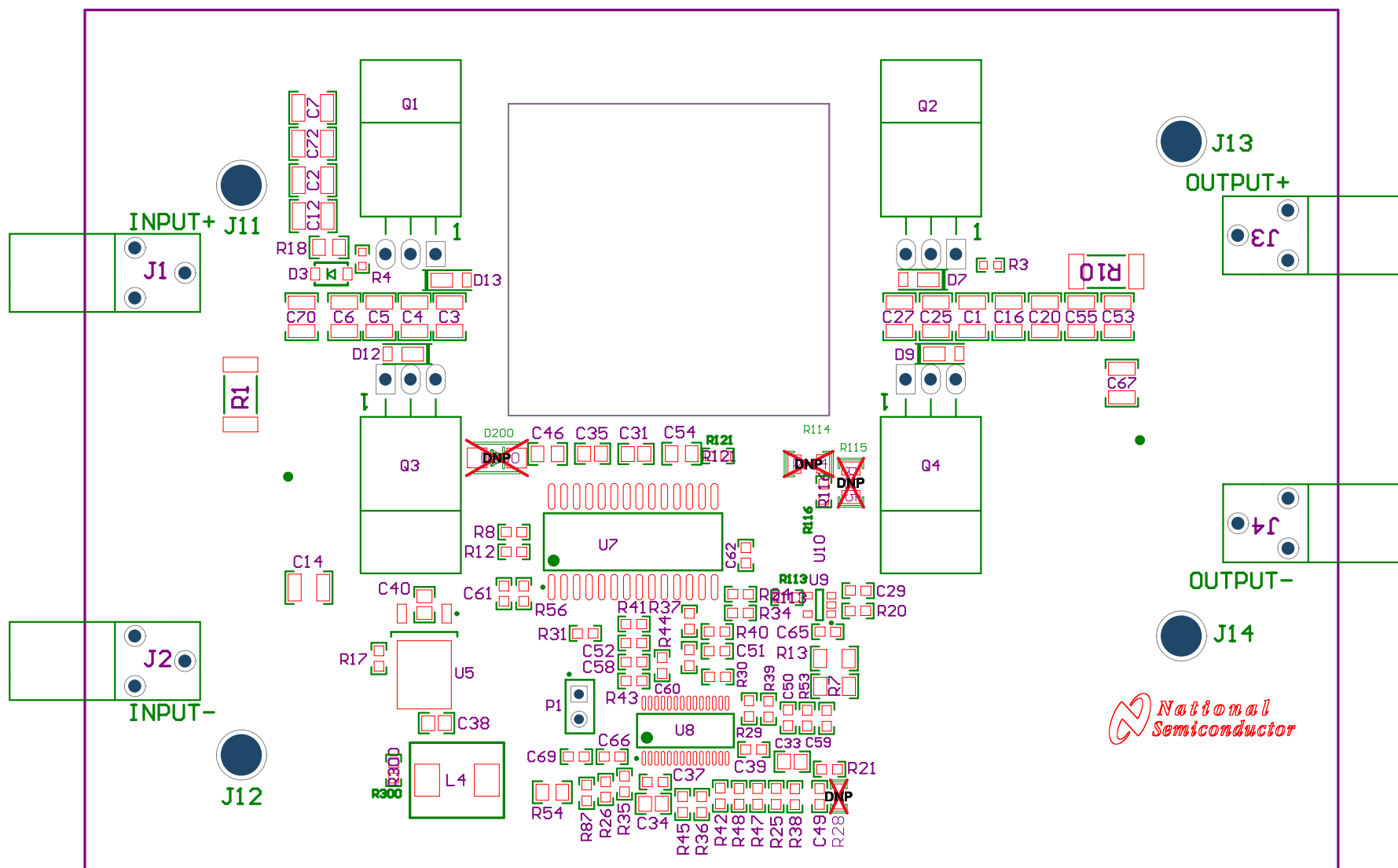


Z21 Components Q1, Q2, Q3, and Q4 need to mount upside down. See PCB 3D pdf. file.



Top Overlay 880

COMPONENTS MARKED 'DNP' SHOULD NOT BE POPULATED, AND MAY NOT BE IN BILL OF MATERIALS

M5 Assembly Top

Top Overlay
M5 Assembly Top

COMPONENTS MARKED 'DIP' SHOULD NOT BE POPULATED, AND MAY NOT BE IN BILL OF MATERIALS

