

1

2

3

4

5

6

Revision History


Rev	ECN #	Approved Date	Approved by	Notes
N/A	N/A	N/A	N/A	N/A

Cannot open file C:\MotorDrives\1 - TIDA\TIDA-01629 DRV8350\Design\Altium\E1\TIDA-01629 Block diagram Drv8350.png

Place Block Diagram here (if appropriate) or delete this text box.  
If using a block diagram from another tool, save the picture as a .bmp file.  
Then, use menu Place|Drawing Tools|Graphic to insert the .png/.svg/.bmp file on the schematic.

Orderable: N/A	Designed for: Public Release	Mod. Date: 1/21/2019
TID #: TIDA-01629	Project Title: 48V/530W three phase inverter with smart gate driver	
Number: TIDA-01629	Rev: E2	Sheet Title:
SVN Rev: Not in version control	Assembly Variant: 001	Sheet: 1 of 3
Drawn By:	File: TIDA-01629_CoverSheet.SchDoc	Size: B
Engineer: Kristen Mogensen	Contact: http://www.ti.com/support	

Texas Instruments and/or its licensors do not warrant the accuracy or completeness of this specification or any information contained therein. Texas Instruments and/or its licensors do not warrant that this design will meet the specifications, will be suitable for your application or fit for any particular purpose, or will operate in an implementation. Texas Instruments and/or its licensors do not warrant that the design is production worthy. You should completely validate and test your design implementation to confirm the system functionality for your application.

 TEXAS  
INSTRUMENTS

http://www.ti.com

© Texas Instruments 2019

1

2

3

4

5

6

A

A

B

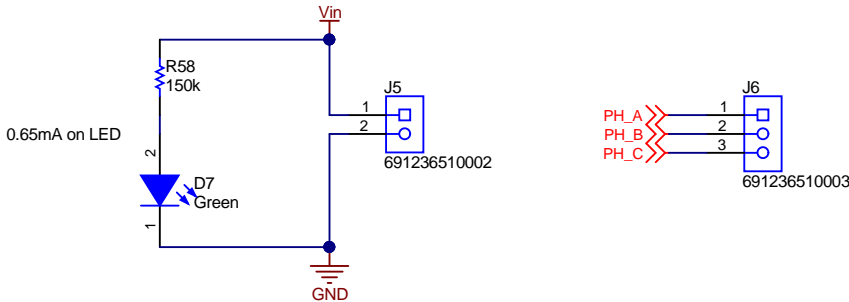
B

C

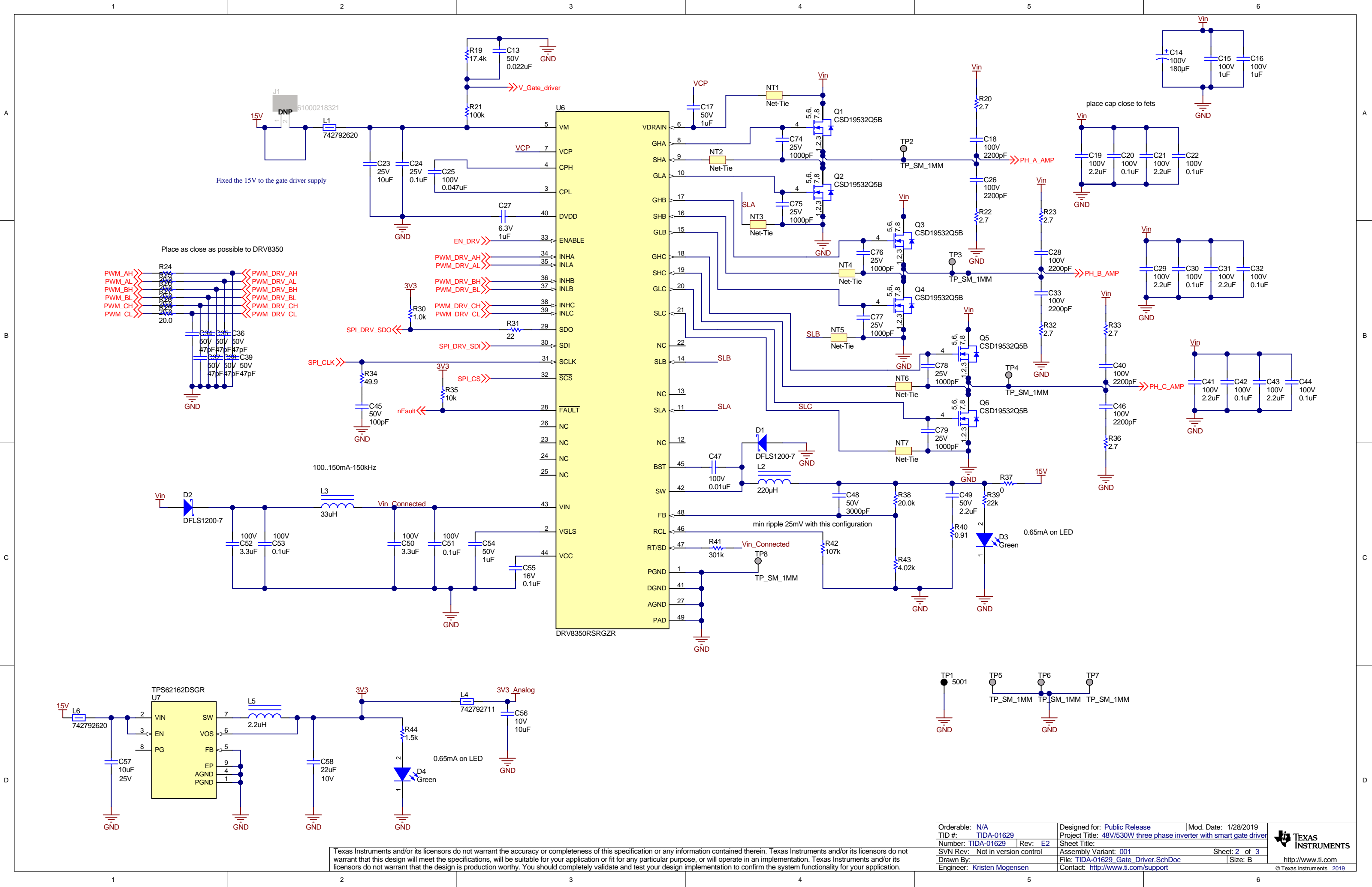
C

D

D

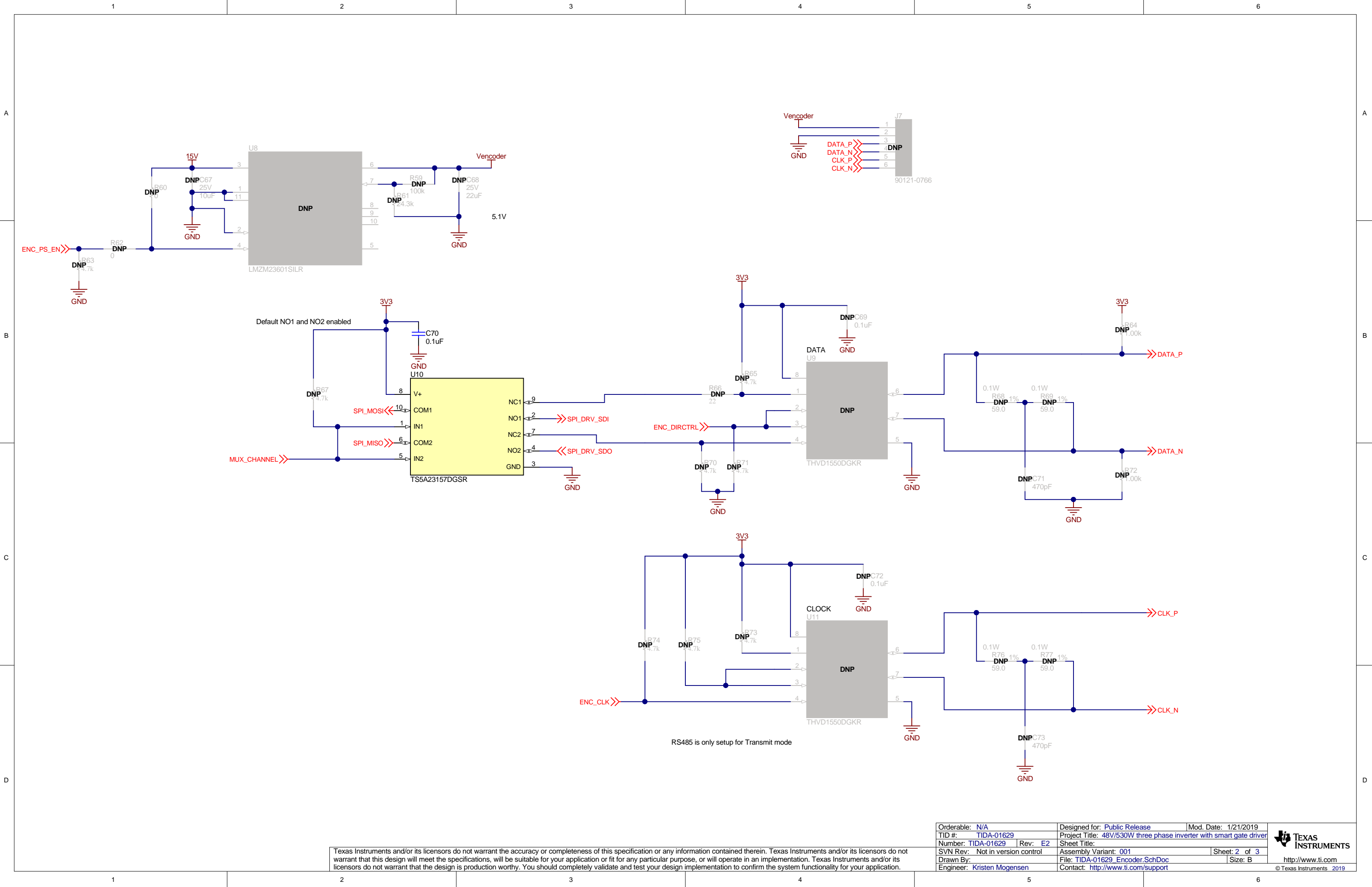


 **TEXAS  
INSTRUMENTS**  
<http://www.ti.com>  
© Texas Instruments 2019



Texas Instruments and/or its licensors do not warrant the accuracy or completeness of this specification or any information contained therein. Texas Instruments and/or its licensors do not warrant that this design will meet the specifications, will be suitable for your application or fit for any particular purpose, or will operate in an implementation. Texas Instruments and/or its licensors do not warrant that the design is production worthy. You should completely validate and test your design implementation to confirm the system functionality for your application.

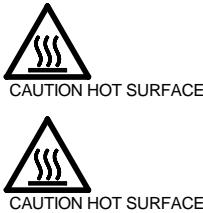
Orderable: N/A	Designed for: Public Release	Mod. Date: 1/28/2019
TID #: TIDA-01629	Project Title: 48V/530W three phase inverter with smart gate driver	
Number: TIDA-01629	Rev: E2	Sheet Title:
SVN Rev: Not in version control	Assembly Variant: 001	Sheet: 2 of 3
Drawn By:	File: TIDA-01629_Gate_Driver.SchDoc	Size: B
Engineer: Kristen Mogensen	Contact: http://www.ti.com/support	



Texas Instruments and/or its licensors do not warrant the accuracy or completeness of this specification or any information contained therein. Texas Instruments and/or its licensors do not warrant that this design will meet the specifications, will be suitable for your application or fit for any particular purpose, or will operate in an implementation. Texas Instruments and/or its licensors do not warrant that the design is production worthy. You should completely validate and test your design implementation to confirm the system functionality for your application.

Orderable: N/A	Designed for: Public Release	Mod. Date: 1/21/2019
TID #: TIDA-01629	Project Title: 48V/530W three phase inverter with smart gate driver	
Number: TIDA-01629	Rev: E2	Sheet Title:
SVN Rev: Not in version control	Assembly Variant: 001	Sheet: 2 of 3
Drawn By:	File: TIDA-01629_Encoder.SchDoc	Size: B
Engineer: Kristen Mogensen	Contact: http://www.ti.com/support	





PCB Number: TIDA-01629  
PCB Rev: E2

PCB  
LOGO  
Pb-Free Symbol

PCB  
LOGO  
FCC disclaimer

PCB  
LOGO  
WEEE logo

LBL1  
PCB Label  
Label

ZZ1  
Label Assembly Note  
This Assembly Note is for PCB labels only

ZZ2  
Assembly Note  
This Assembly Note will show in the PcbDoc and associated outputs

ZZ3  
Assembly Note  
This Assembly Note will show in the PcbDoc and associated outputs

ZZ4  
Assembly Note  
This Assembly Note will show in the PcbDoc and associated outputs

Variant/Label Table	
Variant	Label Text
001	N/A
002	N/A

Texas Instruments and/or its licensors do not warrant the accuracy or completeness of this specification or any information contained therein. Texas Instruments and/or its licensors do not warrant that this design will meet the specifications, will be suitable for your application or fit for any particular purpose, or will operate in an implementation. Texas Instruments and/or its licensors do not warrant that the design is production worthy. You should completely validate and test your design implementation to confirm the system functionality for your application.

Orderable: N/A	Designed for: Public Release	Mod. Date: 1/21/2019
TID #: TIDA-01629	Project Title: 48V/530W three phase inverter with smart gate driver	
Number: TIDA-01629	Rev: E2	Sheet Title:
SVN Rev: Not in version control	Assembly Variant: 001	Sheet: 3 of 3
Drawn By:	File: TIDA-01629_EVM_Hardware.SchDoc	Size: B
Engineer: Kristen Mogensen	Contact: http://www.ti.com/support	