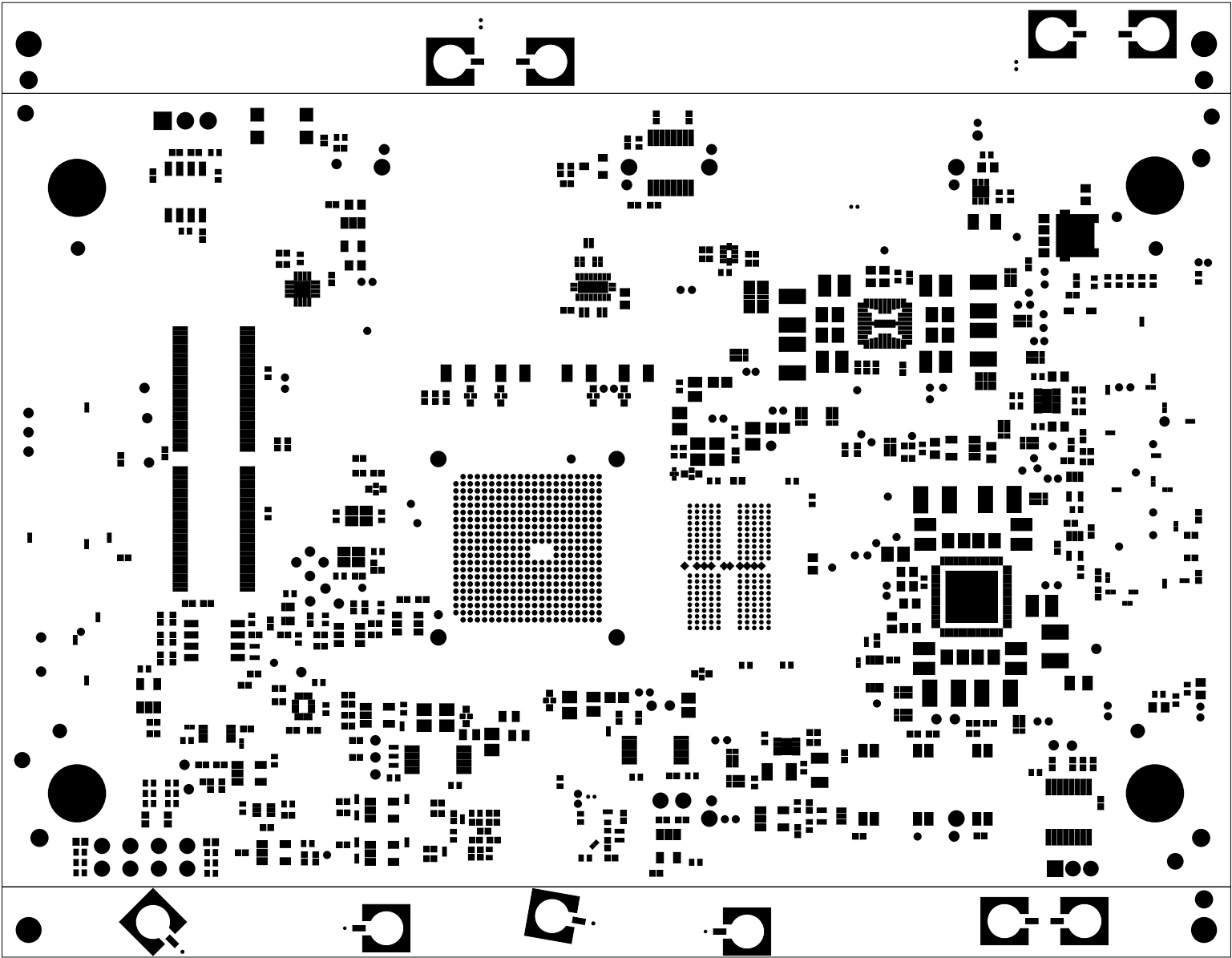

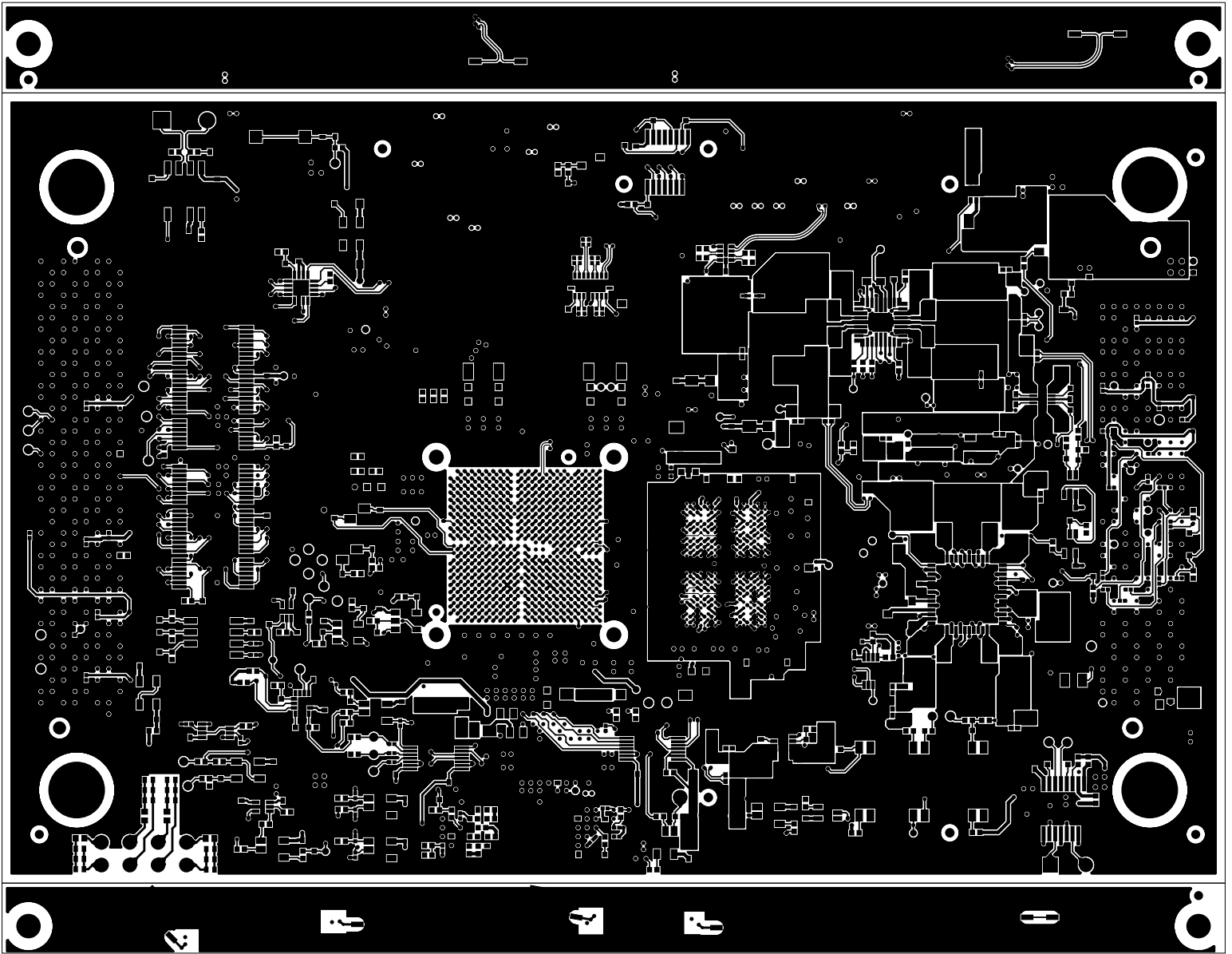



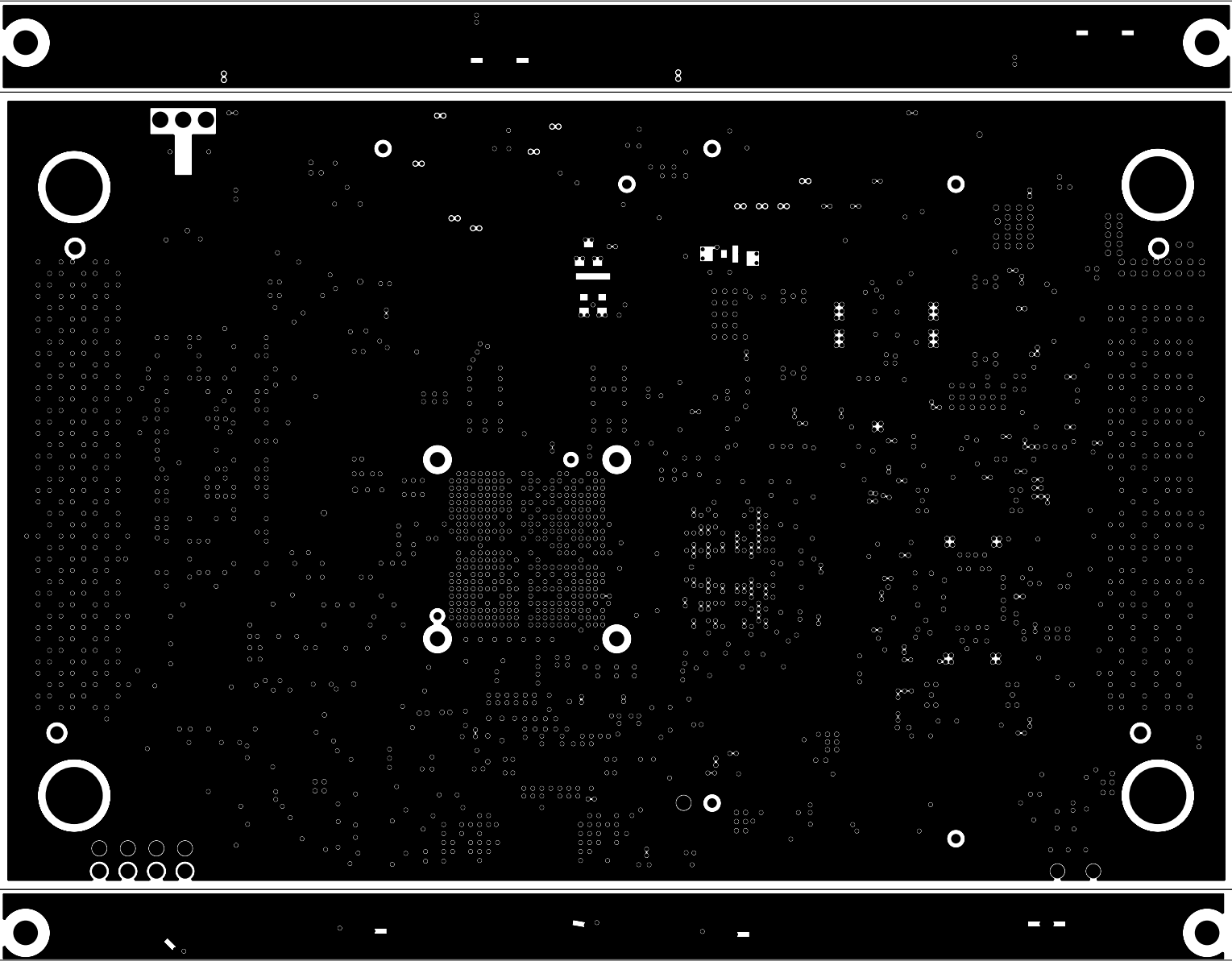
		TEXAS INSTRUMENTS		PROC105E8	
BOARD NAME: J7200X SOM 941x+8764x BRD		REV: E8	DESCRIPTION:	PRIMARY-SILKSCREEN	
SCALE: 1		DATE: 14/12/2021		SHEET 02 OF 19	




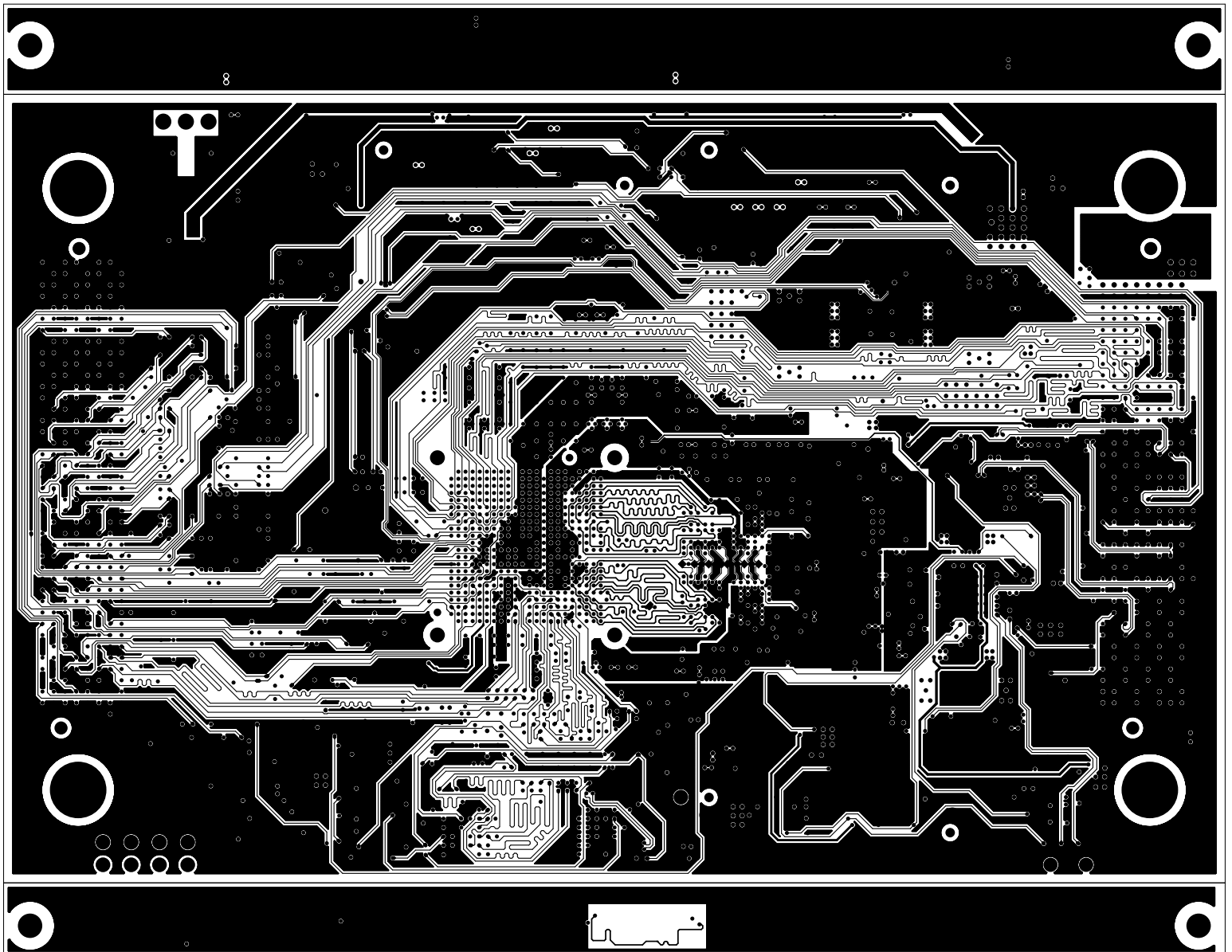
 TEXAS INSTRUMENTS		TEXAS INSTRUMENTS		PROC105E8
BOARD NAME: J7200X SOM 941x+8764x BRD		REV: E8	DESCRIPTION: PRIMARY-SOLDERMASK	
SCALE: 1		DATE: 14/12/2021	SHEET 03 OF 19	




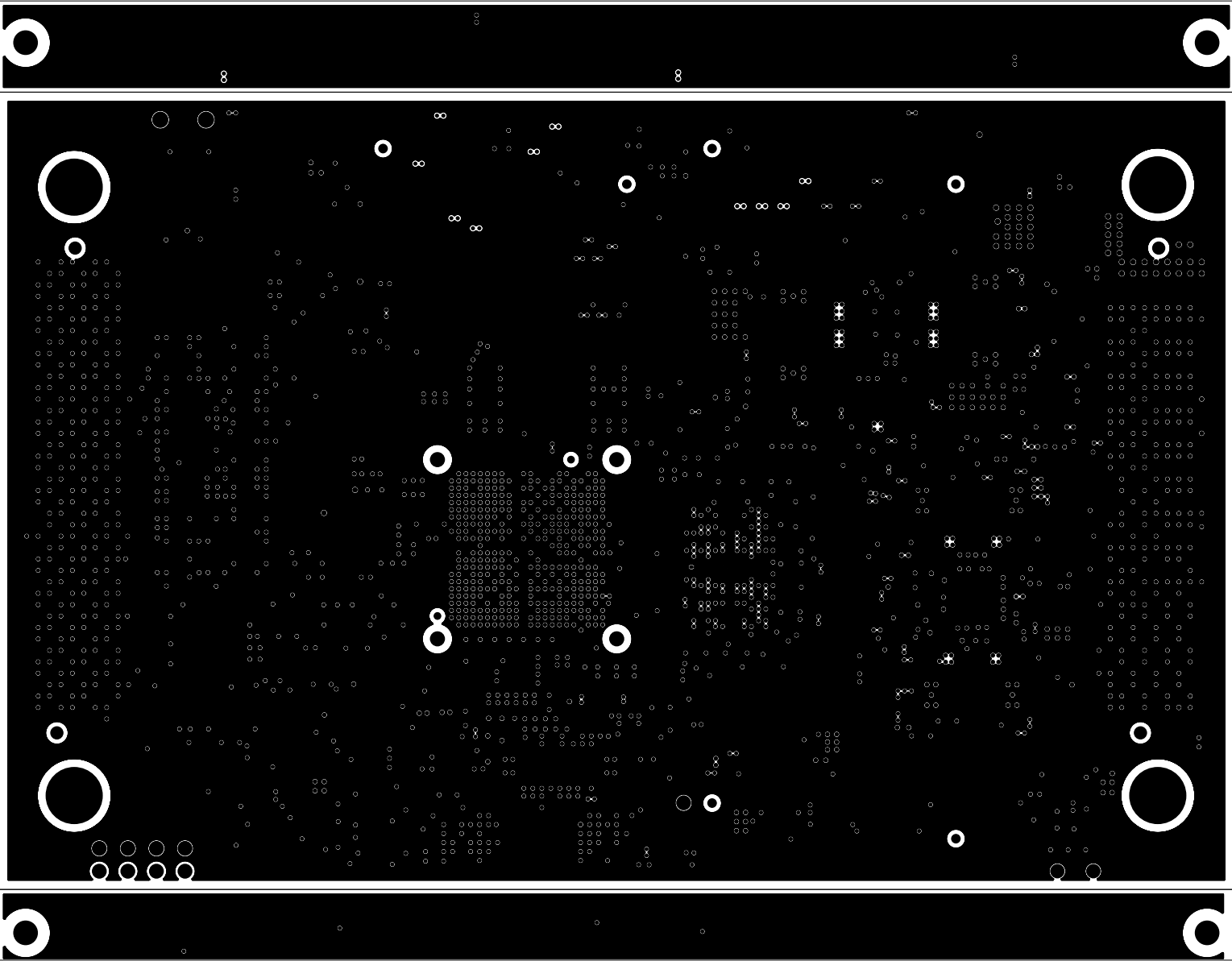
		TEXAS INSTRUMENTS		PROC105E8	
BOARD NAME: J7200X SOM 941x+8764x BRD		REV: E8	DESCRIPTION: PRIMARY-SIDE-SIG		
SCALE: 1		DATE: 14/12/2021		SHEET 04 OF 19	




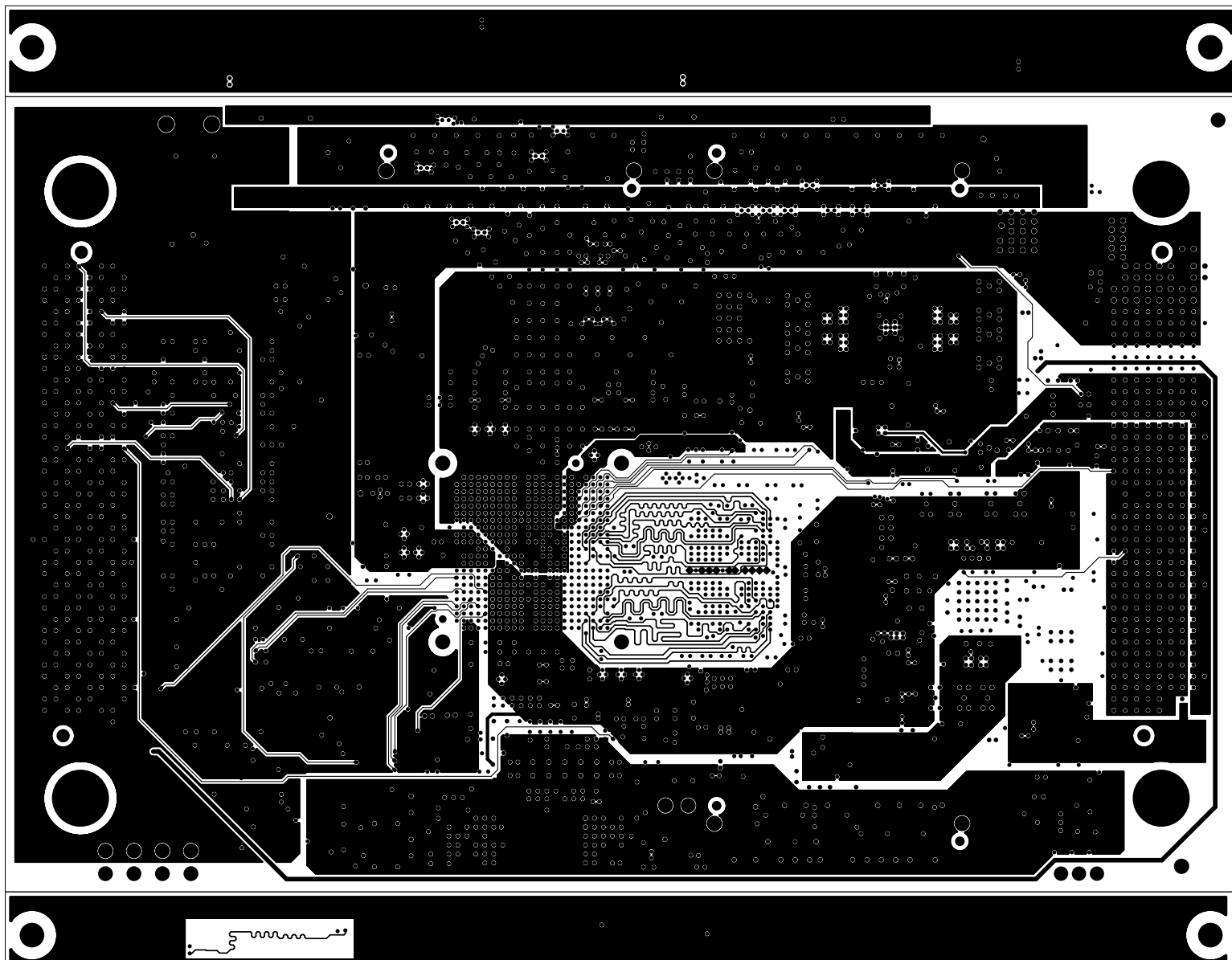
 TEXAS INSTRUMENTS		TEXAS INSTRUMENTS		PROC105E8
BOARD NAME: J7200X SOM 941x+8764x BRD		REV: E8	DESCRIPTION: GROUND-PLANE-01	
SCALE: 1		DATE: 14/12/2021	SHEET 05 OF 19	




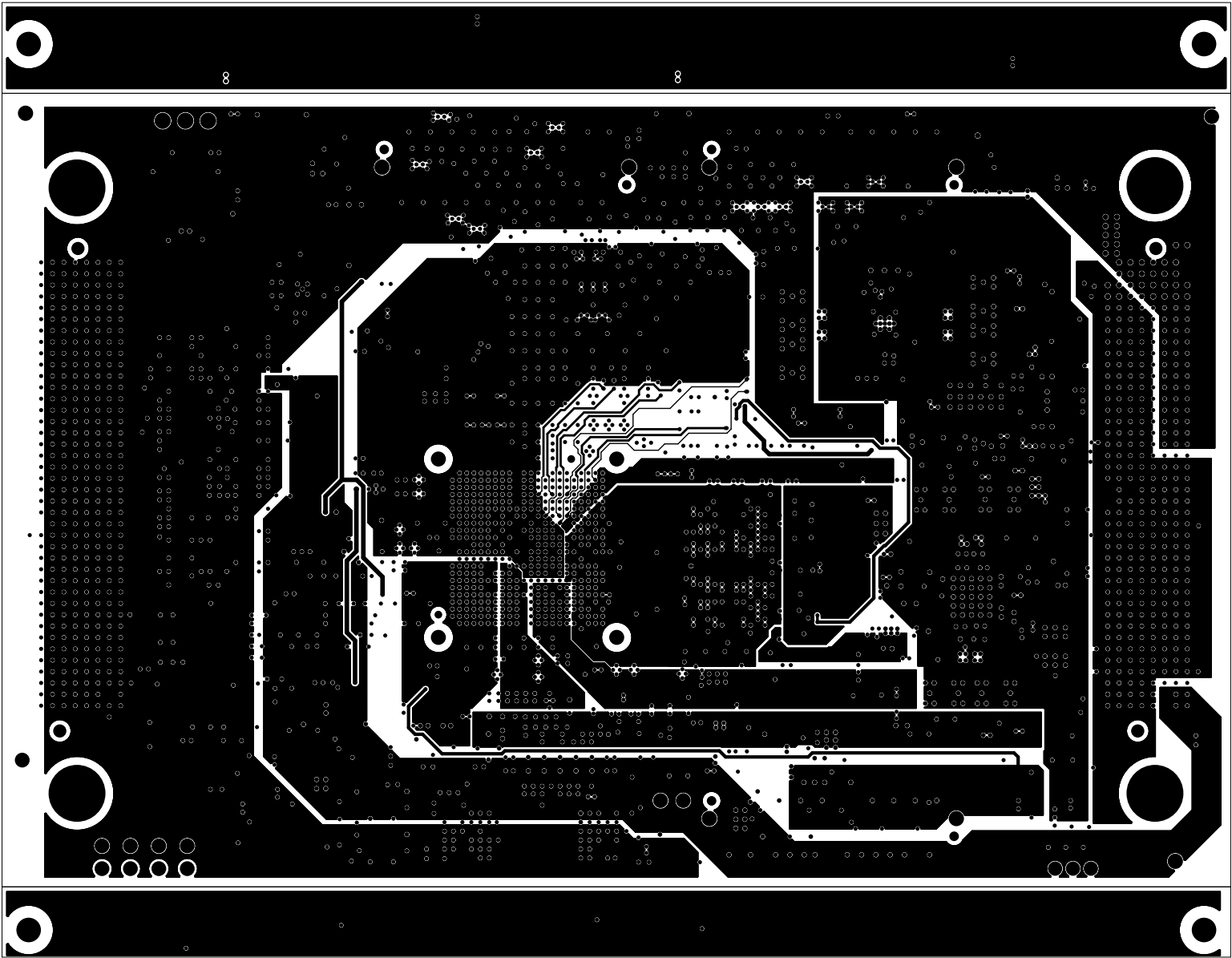
		TEXAS INSTRUMENTS		PROC105E8
BOARD NAME: J7200X SOM 941x+8764x BRD		REV: E8	DESCRIPTION: INNER-SIGNAL-01	
SCALE: 1		DATE: 14/12/2021	SHEET 06 OF 19	




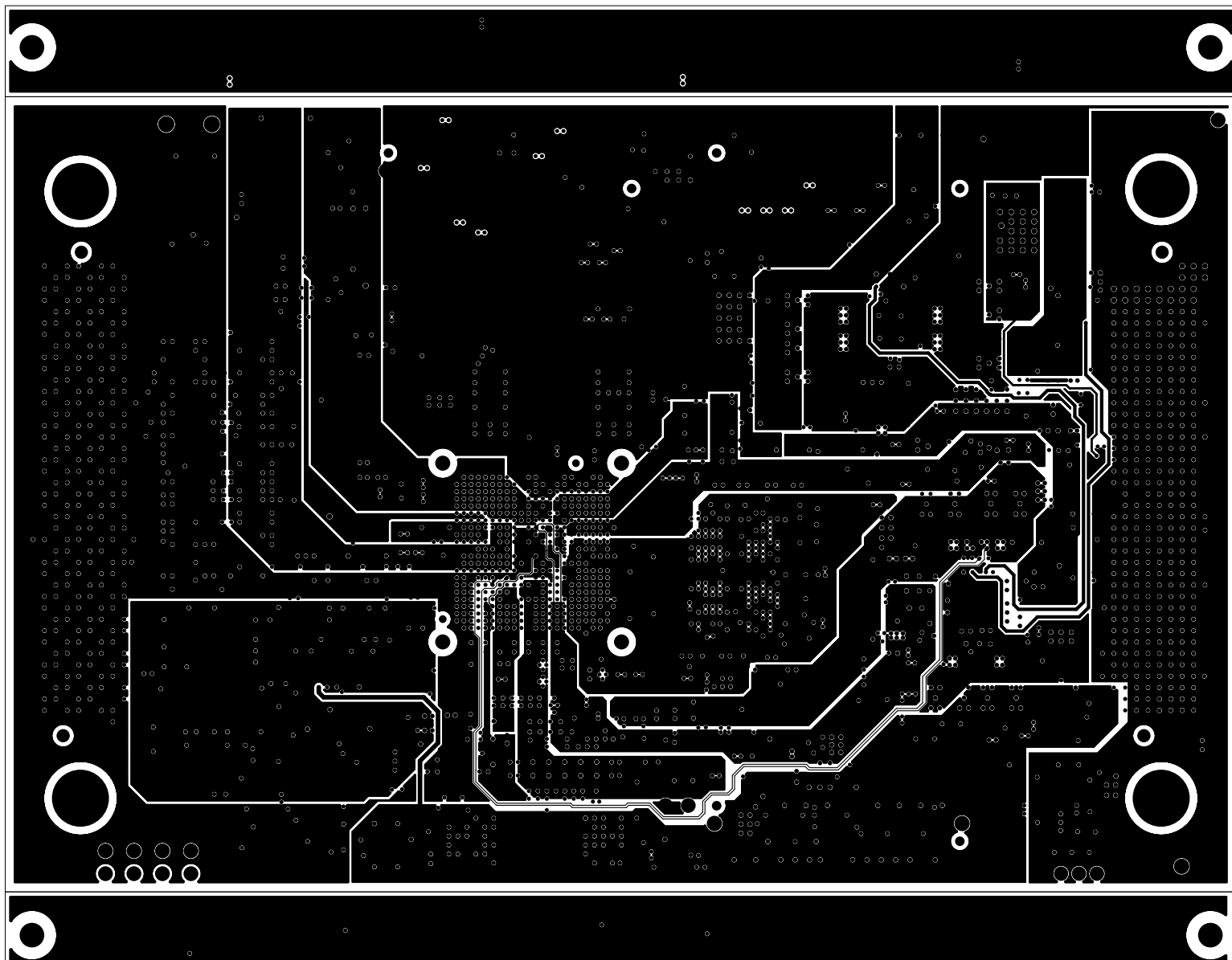
		TEXAS INSTRUMENTS		PROC105E8	
BOARD NAME: J7200X SOM 941x+8764x BRD		REV: E8	DESCRIPTION: GROUND-PLANE-02		
SCALE: 1		DATE: 14/12/2021	SHEET 07 OF 19		




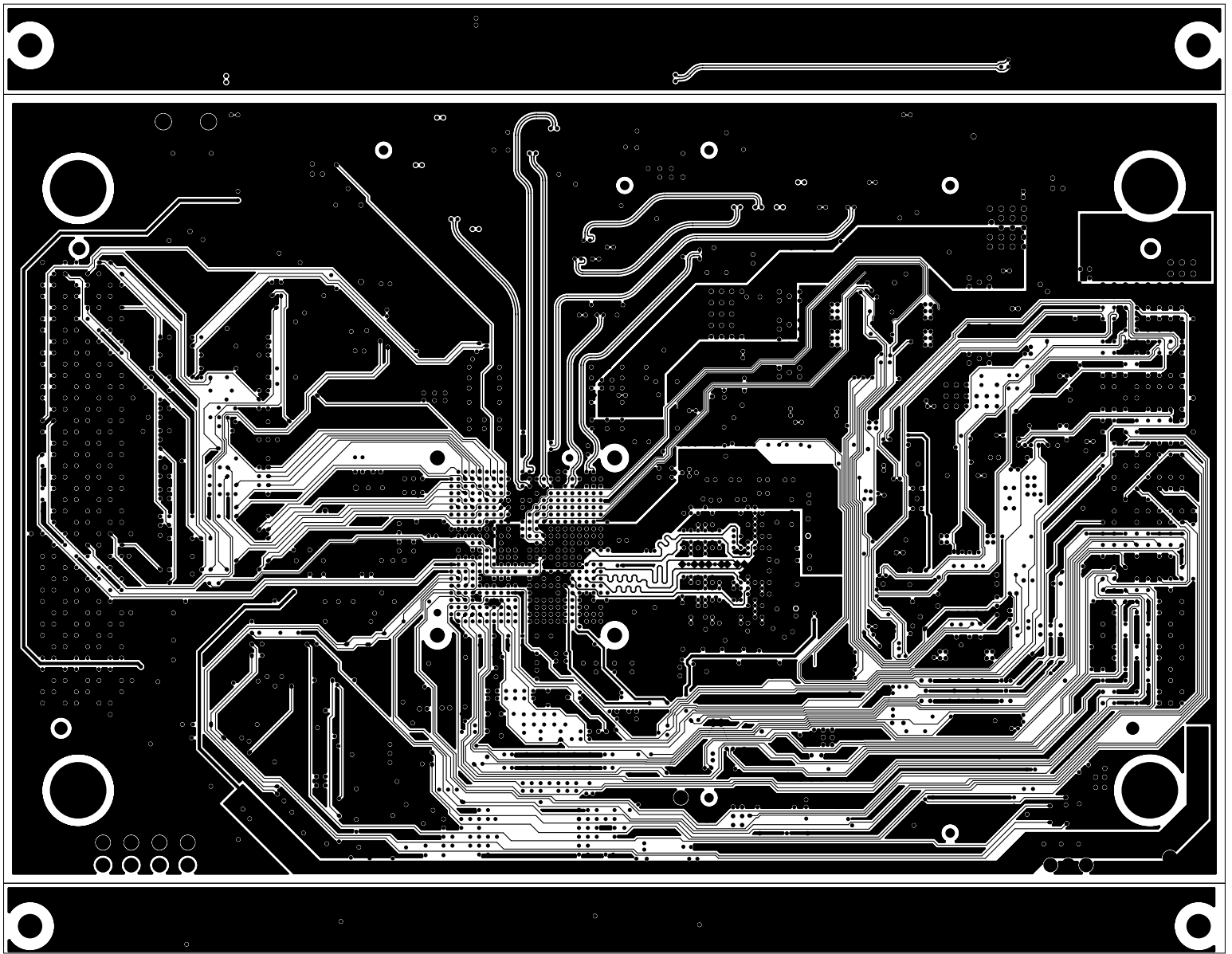
 TEXAS INSTRUMENTS	TEXAS INSTRUMENTS		PROC105E8
BOARD NAME: J7200X SOM 941x+8764x BRD	REV: E8	DESCRIPTION: INNER-SIGNAL-02	
SCALE: 1	DATE: 14/12/2021	SHEET 08 OF 19	




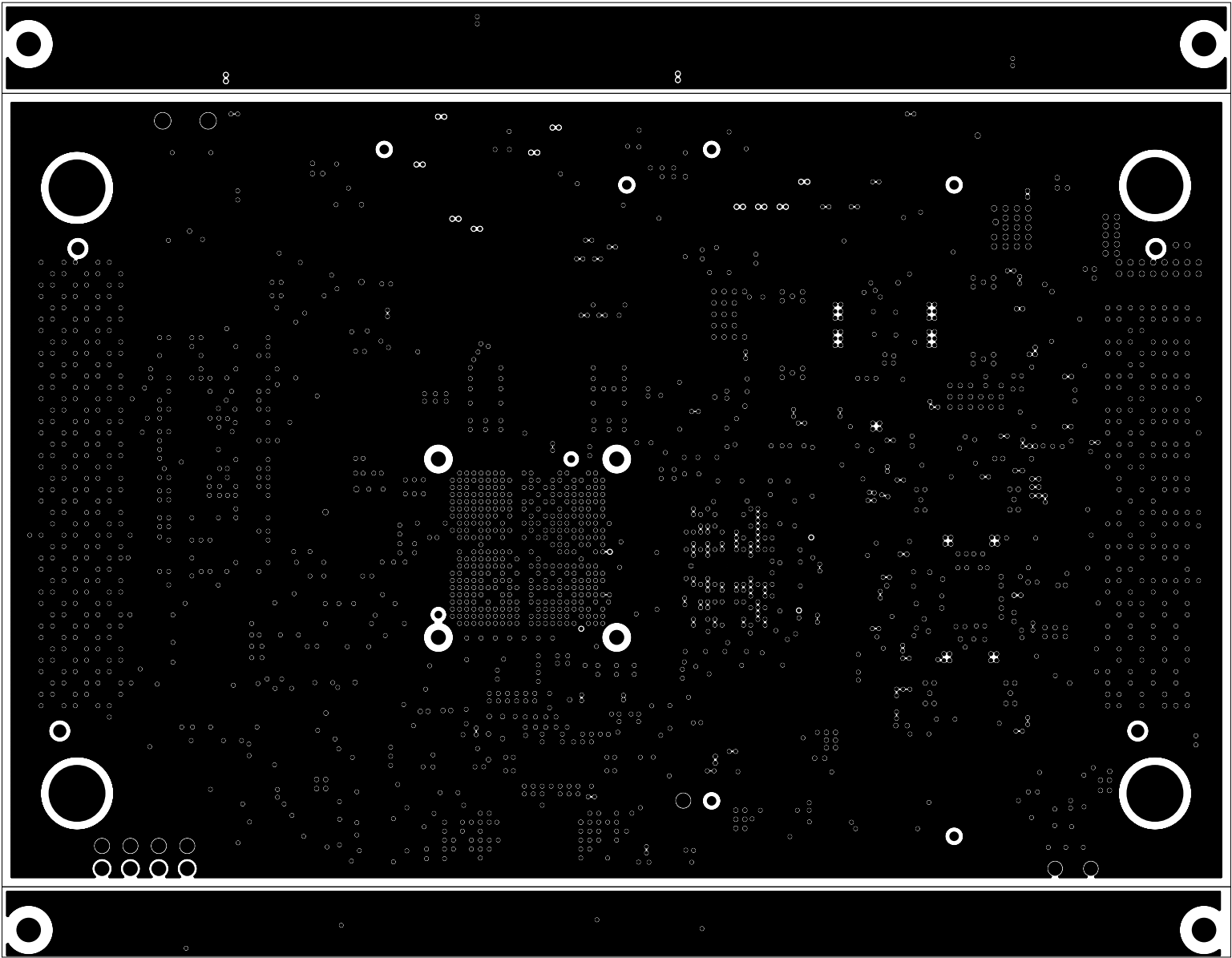
		TEXAS INSTRUMENTS		PROC105E8
BOARD NAME: J7200X SOM 941x+8764x BRD		REV: E8	DESCRIPTION: POWER-PLANE-01	
SCALE: 1		DATE: 14/12/2021	SHEET 09 OF 19	




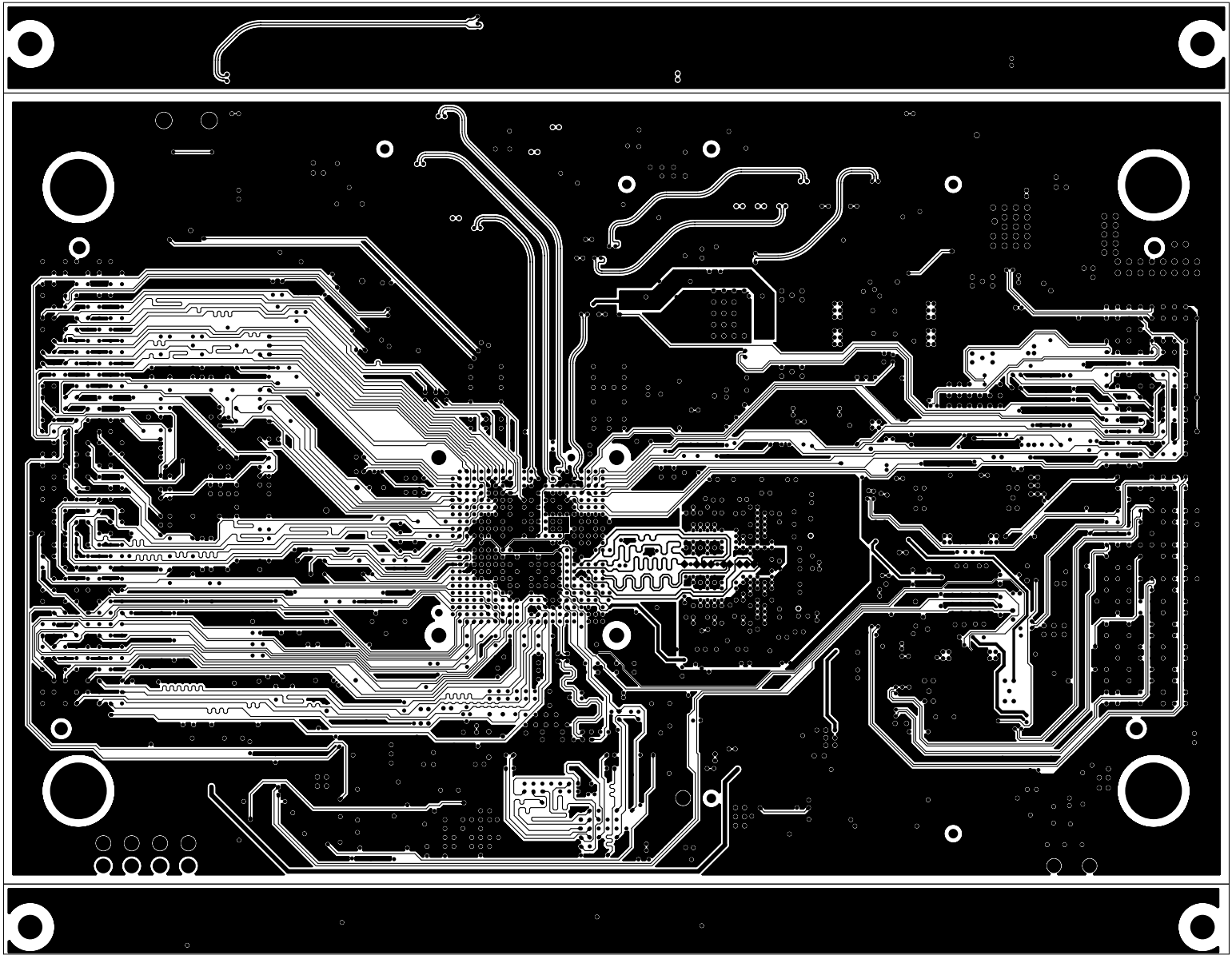
		TEXAS INSTRUMENTS		PROC105E8	
BOARD NAME: J7200X SOM 941x+8764x BRD		REV: E8	DESCRIPTION: POWER-PLANE-02		
SCALE: 1		DATE: 14/12/2021		SHEET 10 OF 19	




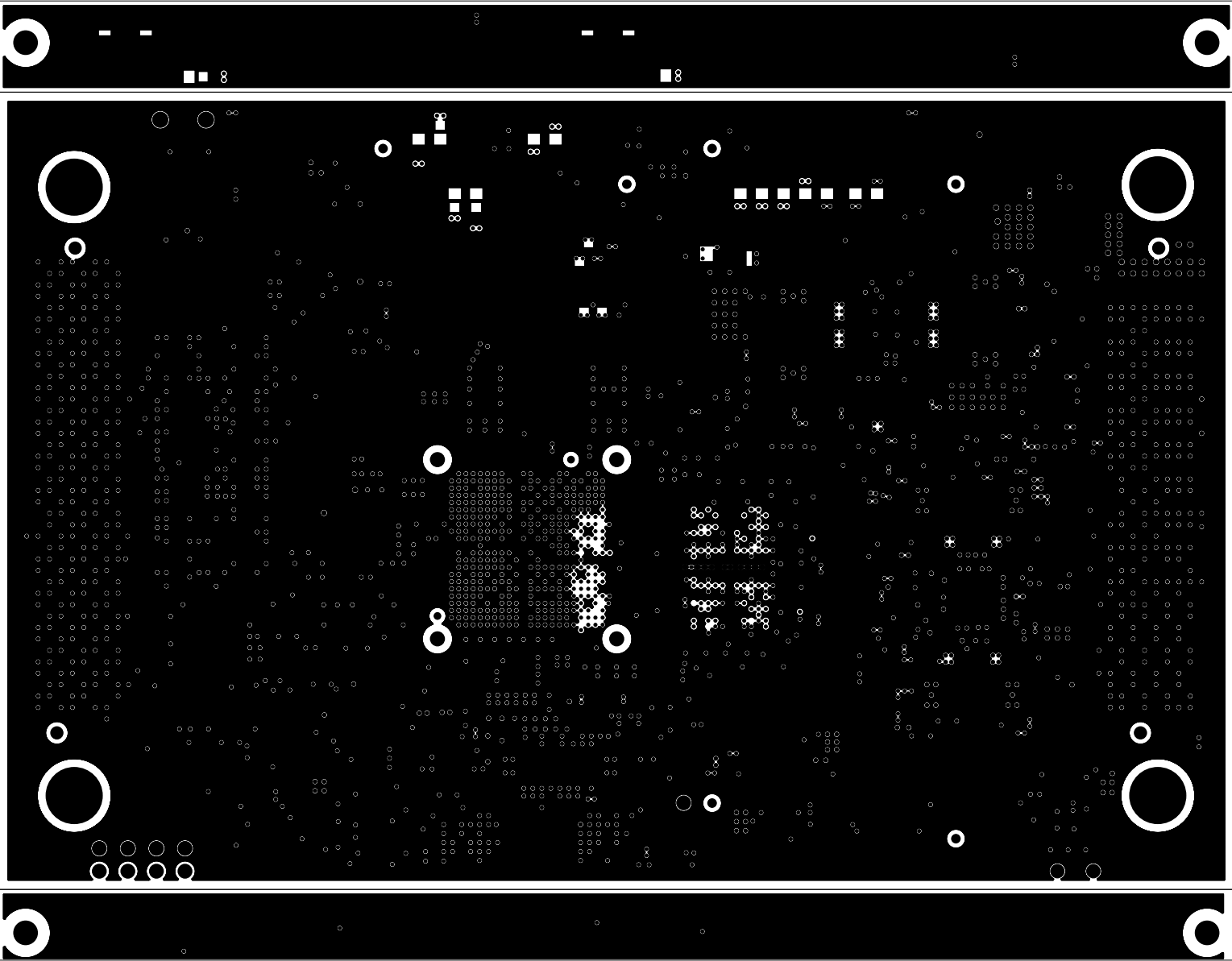
		TEXAS INSTRUMENTS		PROC105E8
BOARD NAME: J7200X SOM 941x+8764x BRD		REV: E8	DESCRIPTION: INNER-SIGNAL-03	
SCALE: 1		DATE: 14/12/2021		SHEET 11 OF 19




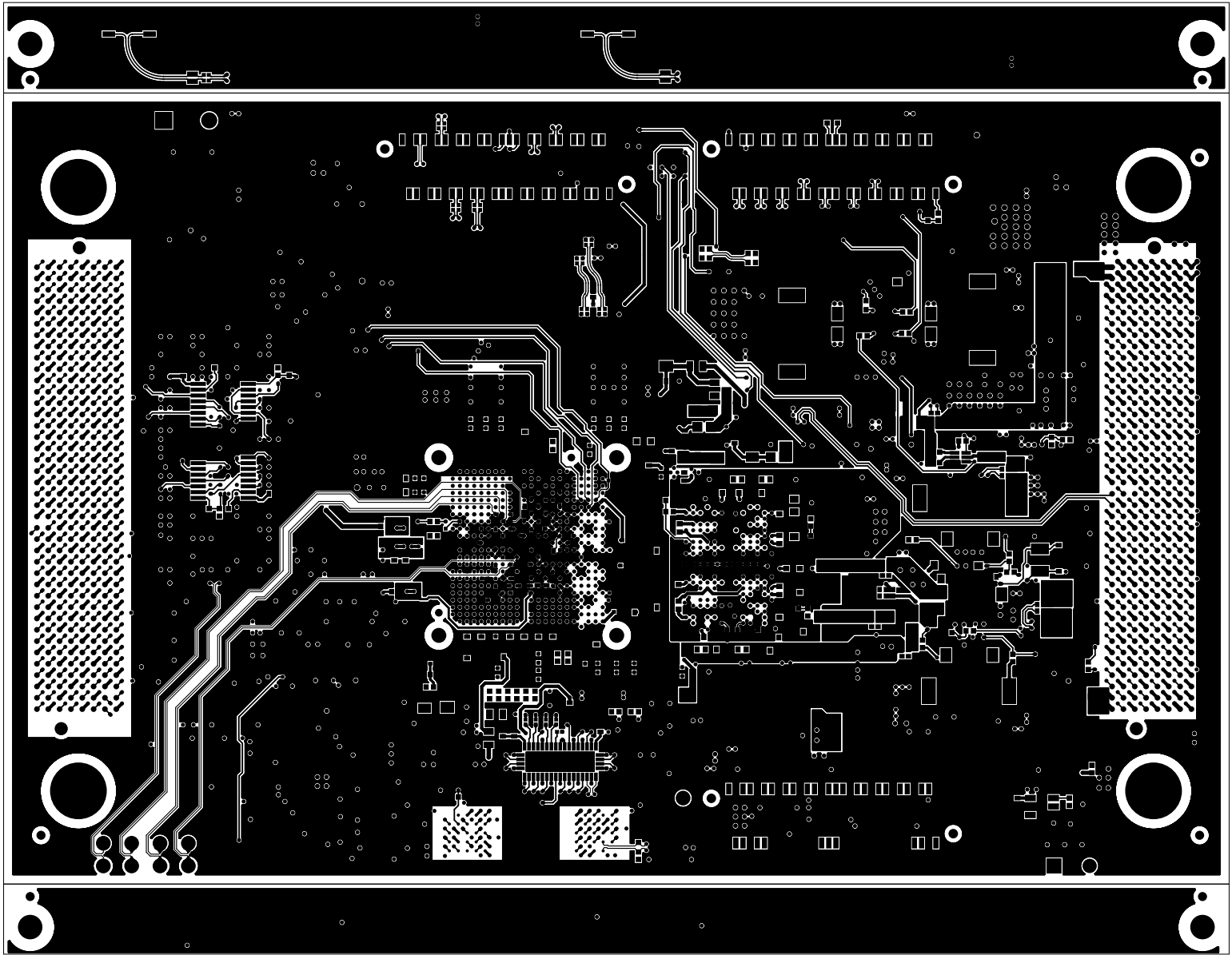
 TEXAS INSTRUMENTS		TEXAS INSTRUMENTS		PROC105E8
BOARD NAME: J7200X SOM 941x+8764x BRD		REV: E8	DESCRIPTION: GROUND-PLANE-03	
SCALE: 1		DATE: 14/12/2021	SHEET 12 OF 19	




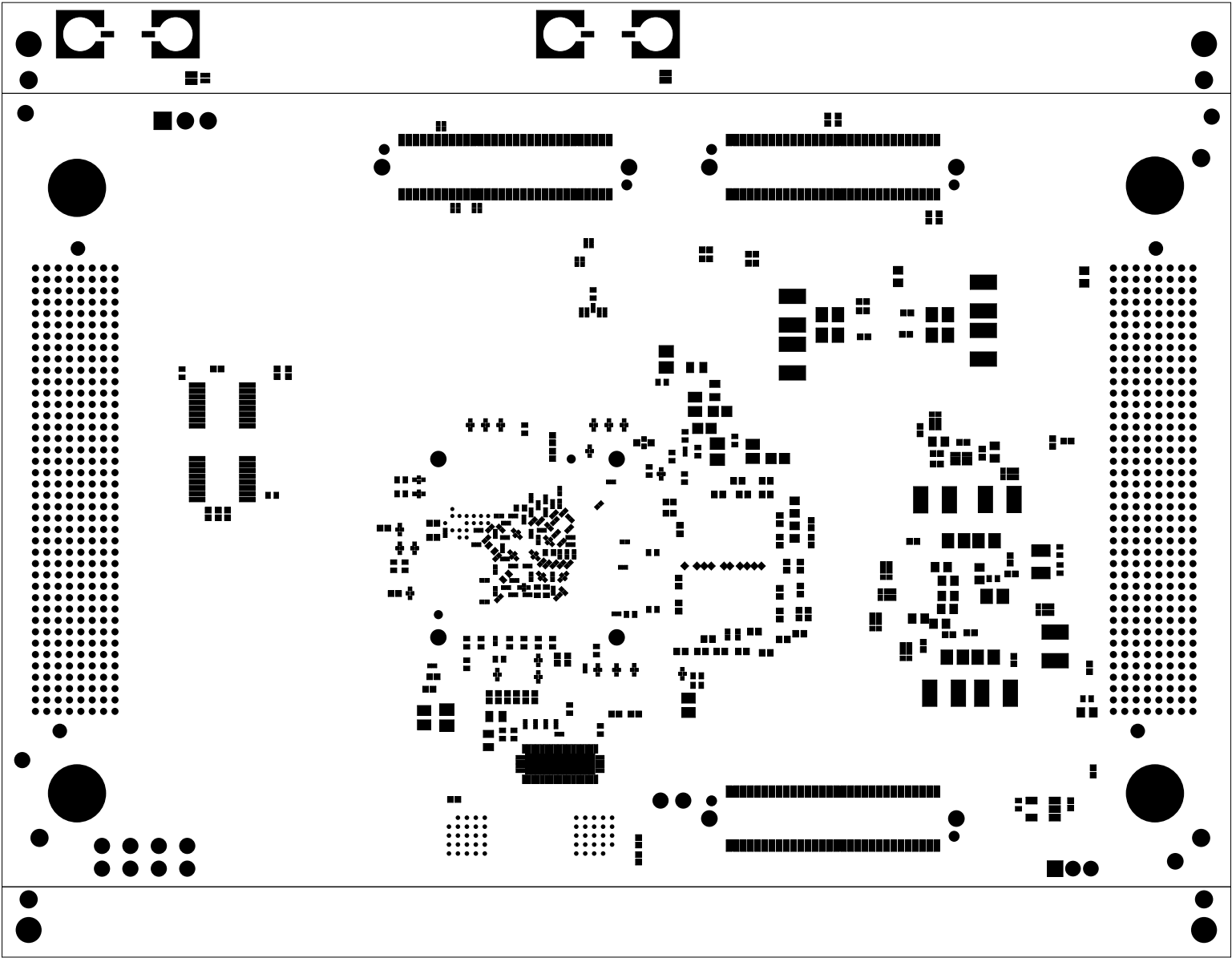
		TEXAS INSTRUMENTS		PROC105E8
BOARD NAME: J7200X SOM 941x+8764x BRD		REV: E8	DESCRIPTION: INNER-SIGNAL-4	
SCALE: 1		DATE: 14/12/2021	SHEET 13 OF 19	




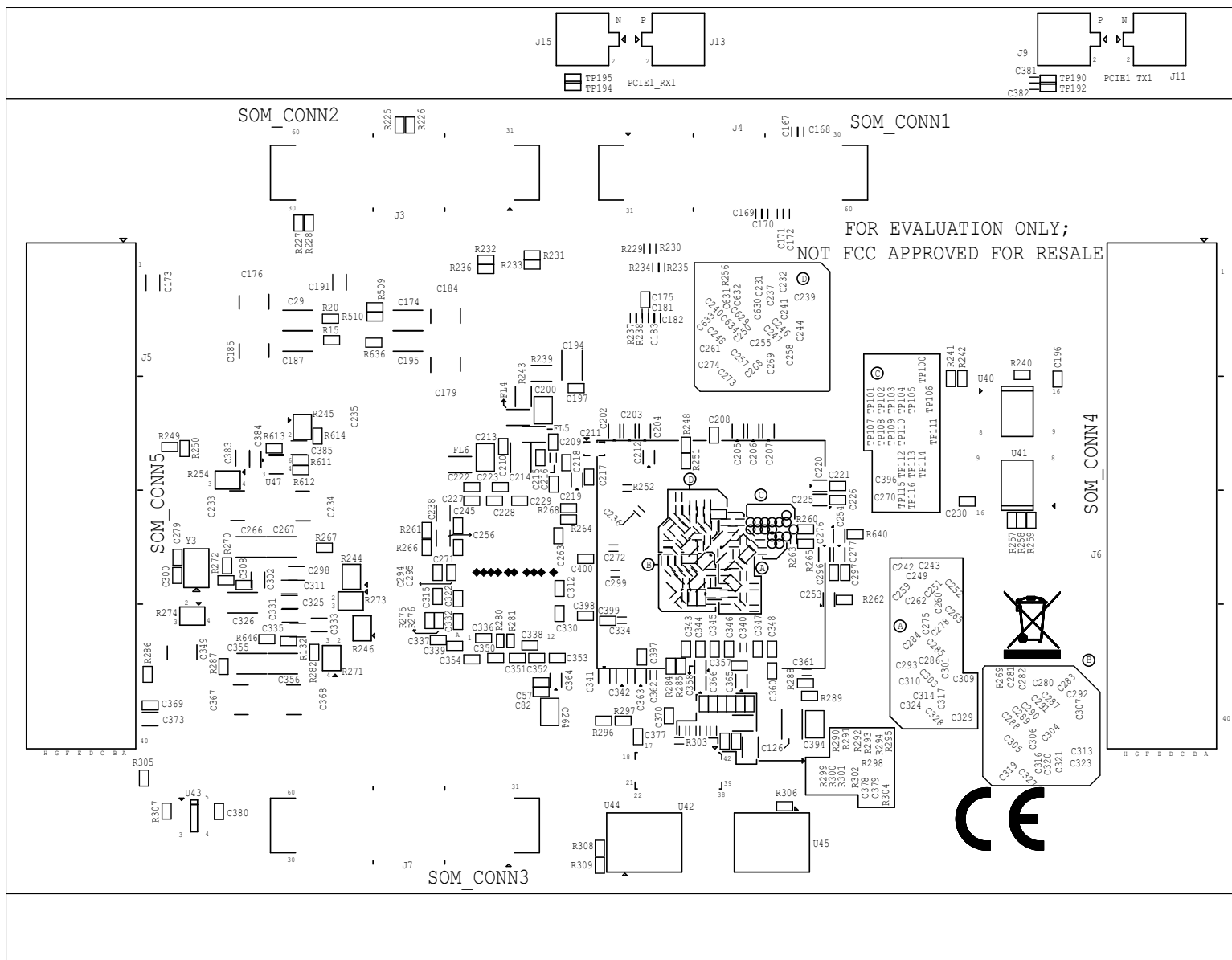
 TEXAS INSTRUMENTS		TEXAS INSTRUMENTS		PROC105E8
BOARD NAME: J7200X SOM 941x+8764x BRD		REV: E8	DESCRIPTION: GROUND-PLANE-04	
SCALE: 1		DATE: 14/12/2021	SHEET 14 OF 19	




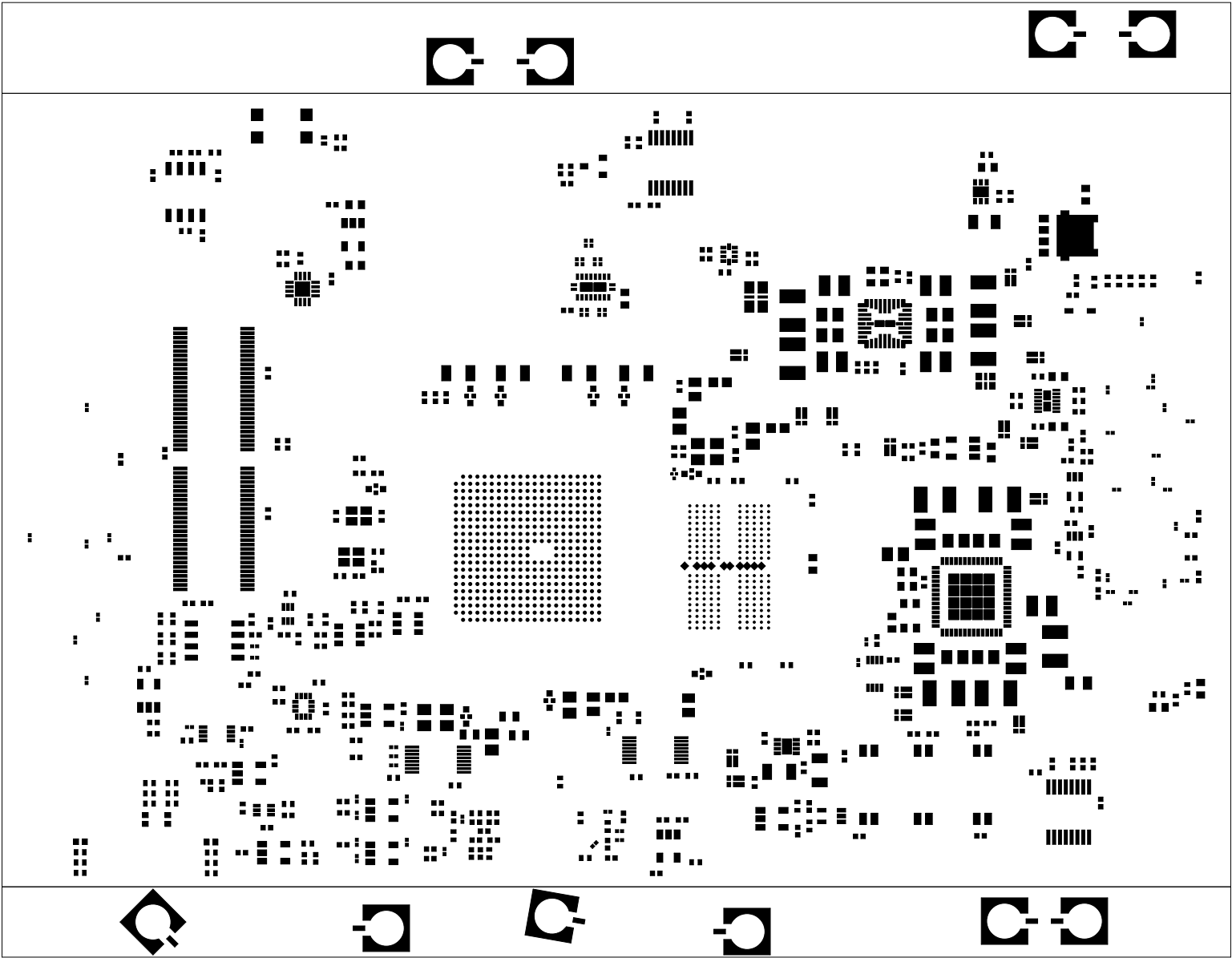
		TEXAS INSTRUMENTS		PROC105E8	
BOARD NAME: J7200X SOM 941x+8764x BRD		REV: E8	DESCRIPTION: SECONDARY-SIDE-SIG		
SCALE: 1		DATE: 14/12/2021		SHEET 15 OF 19	




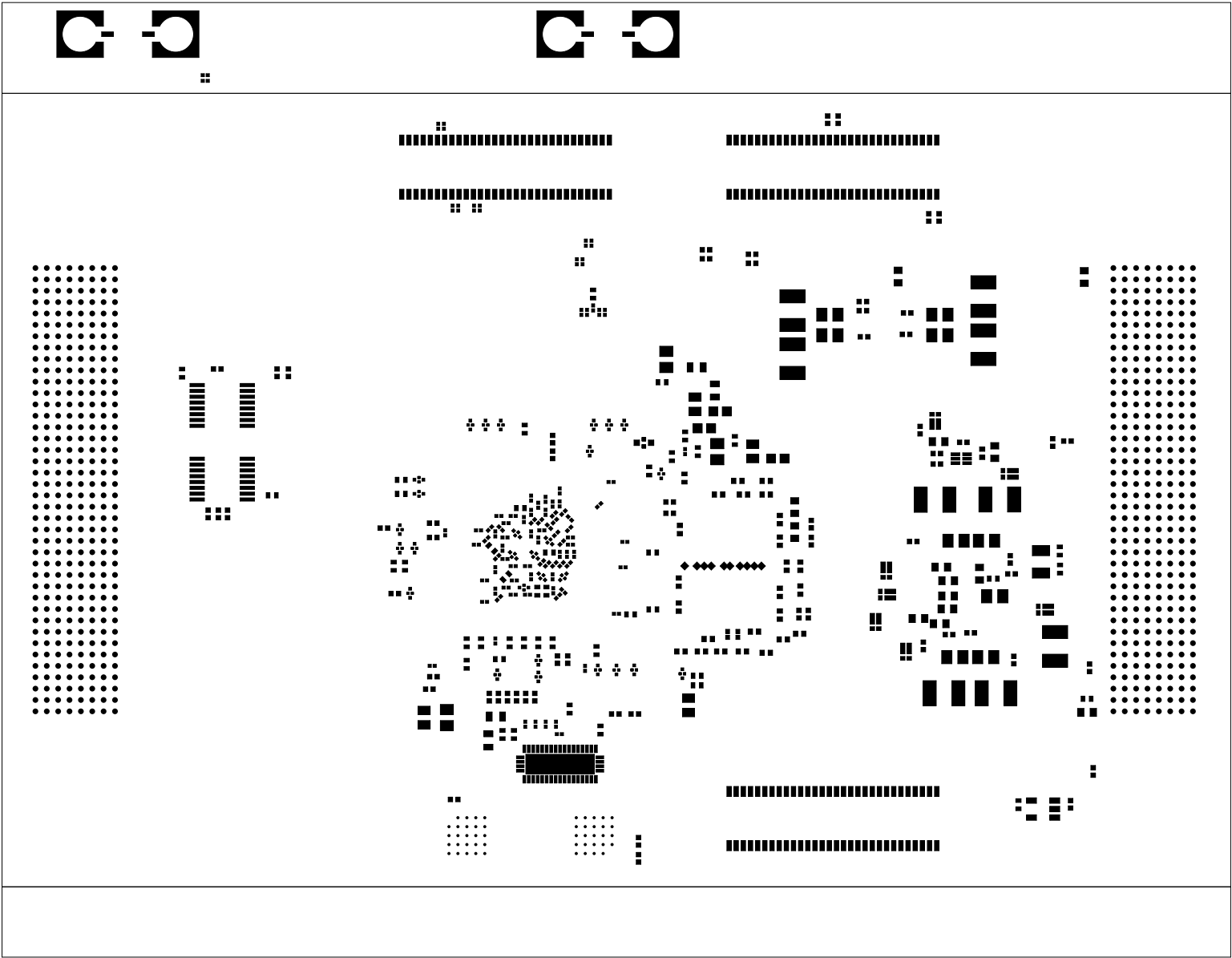
 TEXAS INSTRUMENTS		TEXAS INSTRUMENTS		PROC105E8
BOARD NAME: J7200X SOM 941x+8764x BRD		REV: E8	DESCRIPTION: SECONDARY-SOLDERMASK	
SCALE: 1		DATE: 14/12/2021	SHEET 16 OF 19	




	TEXAS INSTRUMENTS		PROC105E8
BOARD NAME: J7200X SOM 941x+8764x BRD	REV: E8	DESCRIPTION: SECONDARY-SILKSCREEN	
SCALE: 1	DATE: 14/12/2021	SHEET 17 OF 19	



 TEXAS INSTRUMENTS		TEXAS INSTRUMENTS		PROC105E8
BOARD NAME: J7200X SOM 941x+8764x BRD		REV: E8	DESCRIPTION: PRIMARY-PASTEMASK	
SCALE: 1		DATE: 14/12/2021	SHEET 18 OF 19	



		TEXAS INSTRUMENTS		PROC105E8	
BOARD NAME: J7200X SOM 941x+8764x BRD		REV: E8	DESCRIPTION: SECONDARY-PASTEMASK		
SCALE: 1		DATE: 14/12/2021	SHEET 19 OF 19		