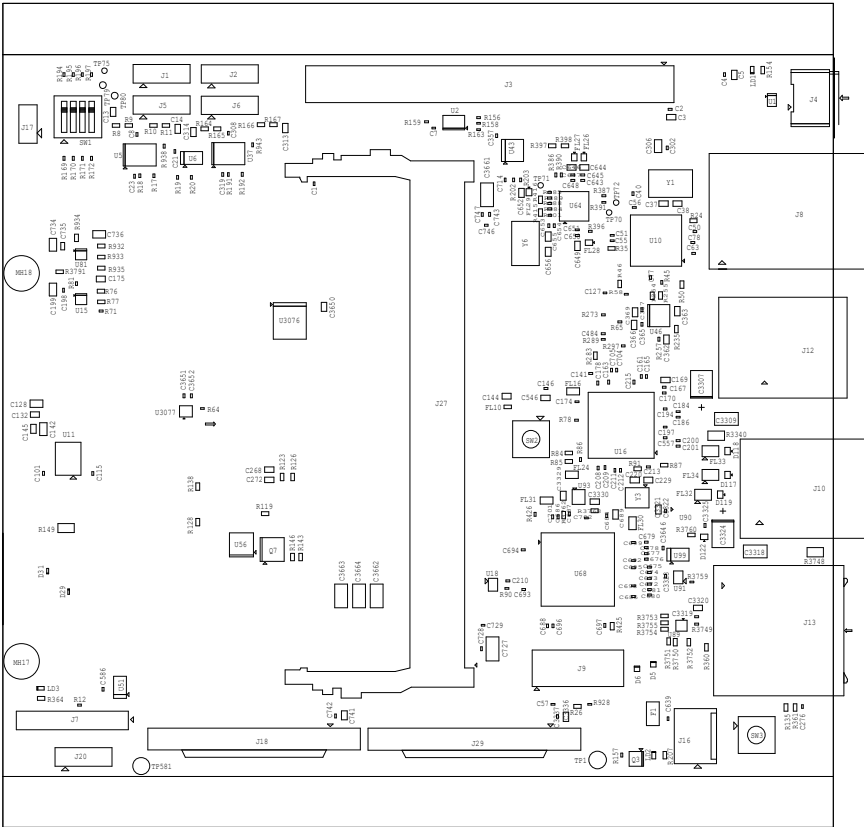



PROC125E1 (001) ASSEMBLY TOP

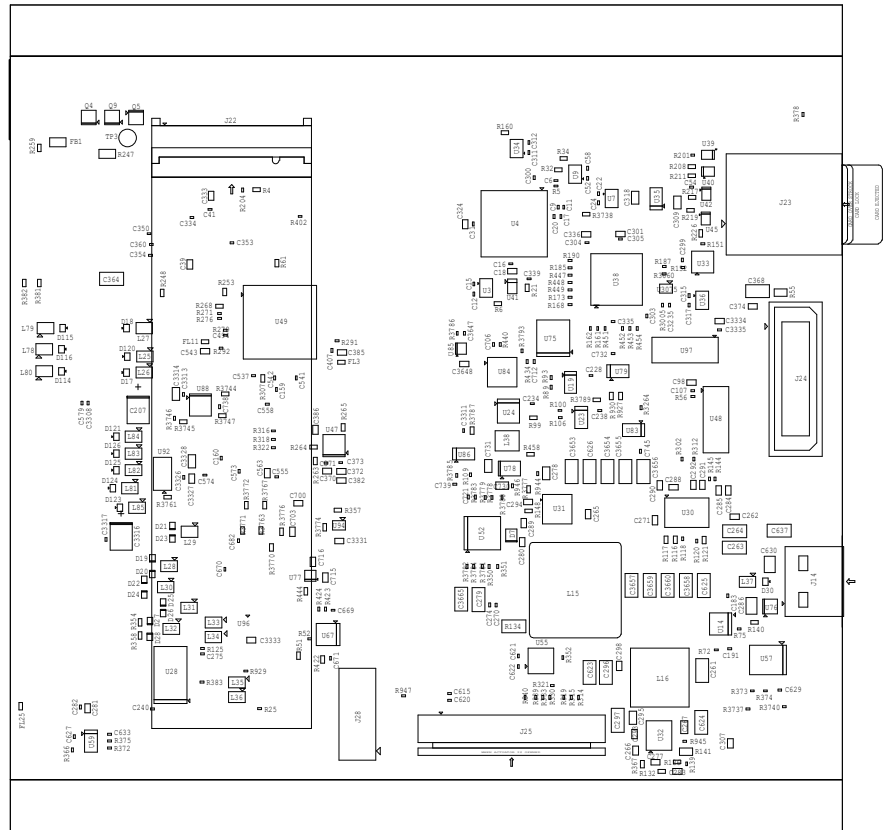
- 1 - All MSL components should be baked as per JEDEC standard.
- 2 - PCB should be baked at 120 degree for 8 hours.
- 3 - Board assembly must comply with workmanship standards IPC-A-610 Class 2, unless otherwise specified.
- 4 - These assemblies are ESD sensitive, ESD precautions shall be observed.
- 5 - These assemblies must be clean and free from flux and all contaminants. Use of no clean flux is not acceptable.
- 6 - Provide serial numbers to the assembled boards for identification.
- 7 - The assembled board are wrapped in ESD Covers(individual) and packed securely before shipment.




 TEXAS INSTRUMENTS		PROC125E1
BOARD NAME: J7 SK CARRIER BOARD	REV: E1	DESCRIPTION:
SCALE: 1	DATE: 13/09/2022	SHEET 1 OF 2

PROC125E1 (001) ASSEMBLY BOT

- 1 - All MSL components should be baked as per JEDEC standard.
- 2 - PCB should be baked at 120 degree for 8 hours.
- 3 - Board assembly must comply with workmanship standards IPC-A-610 Class 2, unless otherwise specified.
- 4 - These assemblies are ESD sensitive, ESD precautions shall be observed.
- 5 - These assemblies must be clean and free from flux and all contaminants. Use of no clean flux is not accep
- 6 - Provide serial numbers to the assembled boards for identification.
- 7 - The assembled board are wrapped in ESD Covers(individual) and packed securely before shipment.



PROC125E1	TEXAS INSTRUMENTS		
DESCRIPTION:		REV: E1	BOARD NAME: J7 SK CARRIER BOARD
SHEET 2 OF 2		DATE: 13/09/2022	SCALE: 1