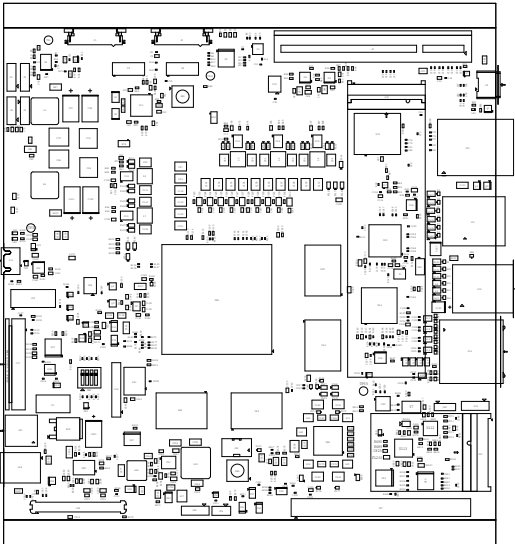


PROC154E2 (001) ASSEMBLY TOP

ASSEMBLY NOTES:-

- 1 - All MSL components should be baked as per JEDEC standard.
- 2 - PCB should be baked at 120 degree for 8 hours.
- 3 - Board assembly must comply with workmanship standards IPC-A-610 Class 2, unless otherwise specified.
- 4 - These assemblies are ESD sensitive, ESD precautions shall be observed.
- 5 - These assemblies must be clean and free from flux and all contaminants. Use of no clean flux is not acceptable.
- 6 - Provide serial numbers to the assembled boards for identification.
- 7 - The assembled board are wrapped in ESD Covers(individual) and packed securely before shipment.

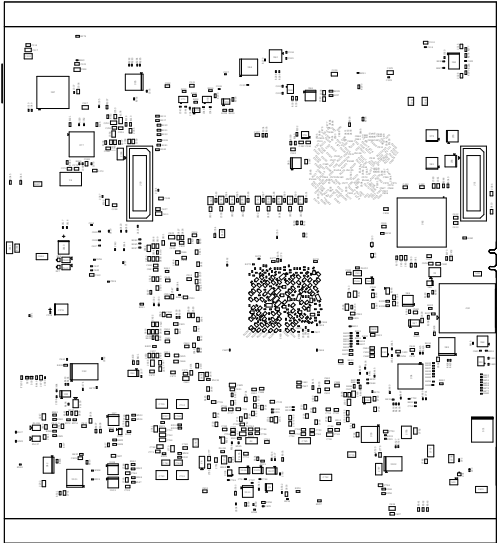


TEXAS INSTRUMENTS		PROC154E2
BOARD NAME: AM69 PROCESSOR STARTER KIT	REV: K2	DESCRIPTION:
SCALE: 1	DATE: 24/11/2022	SHEET OF 23

PROC154E2 (001) ASSEMBLY BOTTOM

ASSEMBLY NOTES:-

- 1 - All MSL components should be baked as per JEDEC standard.
- 2 - PCB should be baked at 120 degree for 8 hours.
- 3 - Board assembly must comply with workmanship standards IPC-A-610 Class 2, unless otherwise specified.
- 4 - These assemblies are ESD sensitive, ESD precautions shall be observed.
- 5 - These assemblies must be clean and free from flux and all contaminants. Use of no clean flux is not accepted.
- 6 - Provide serial numbers to the assembled boards for identification.
- 7 - The assembled board are wrapped in ESD Covers(individual) and packed securely before shipment.



TEXAS INSTRUMENTS		PROC154E2
BOARD NAME:AM69 PROCESSOR STARTER KIT	REV: E2	DESCRIPTION:
SCALE: 1	DATE: 24/11/2022	SHEET: 0F23