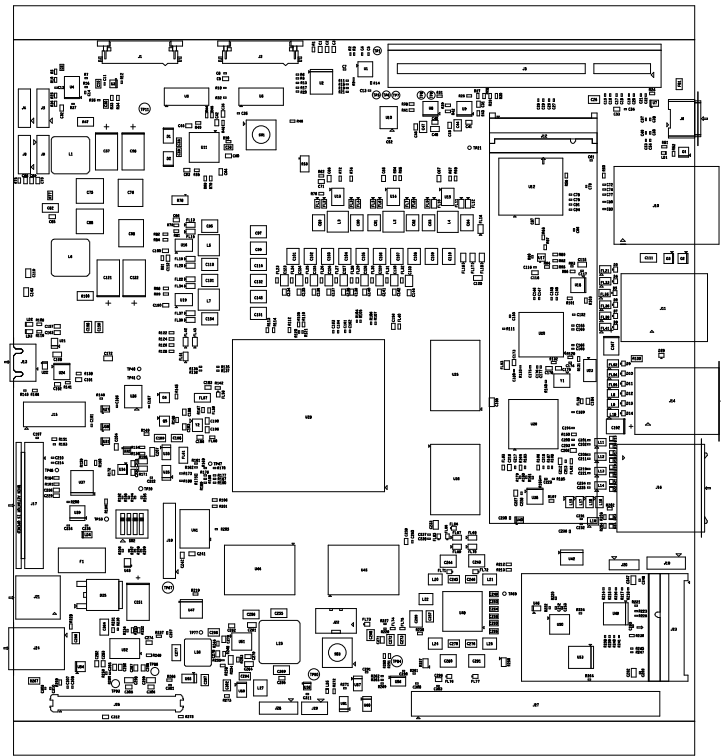



PROC154E1 (001) ASSEMBLY TOP

ASSEMBLY NOTES:-

- 1 - All MSL components should be baked as per JEDEC standard.
- 2 - PCB should be baked at 120 degree for 8 hours.
- 3 - Board assembly must comply with workmanship standards IPC-A-610 Class 2, unless otherwise specified.
- 4 - These assemblies are ESD sensitive, ESD precautions shall be observed.
- 5 - These assemblies must be clean and free from flux and all contaminants. Use of no clean flux is not acceptable.
- 6 - Provide serial numbers to the assembled boards for identification.
- 7 - The assembled board are wrapped in ESD Covers(individual) and packed securely before shipment.

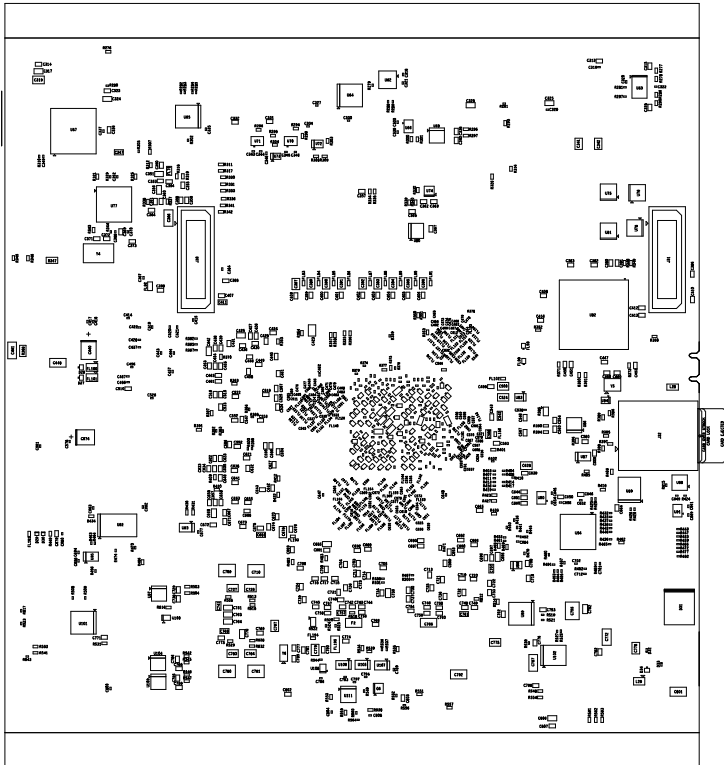


		TEXAS INSTRUMENTS		PROC154E1
BOARD NAME: AM69 PROCESSOR STARTER KIT		REV: E1	DESCRIPTION:	
SCALE: 1	DATE: 12/10/2022	SHEET	OF 23	

PROC154E1 (001) ASSEMBLY BOTTOM

ASSEMBLY NOTES:-

- 1 - All MSL components should be baked as per JEDEC standard.
- 2 - PCB should be baked at 120 degree for 8 hours.
- 3 - Board assembly must comply with workmanship standards IPC-A-610 Class 2, unless otherwise specified.
- 4 - These assemblies are ESD sensitive, ESD precautions shall be observed.
- 5 - These assemblies must be clean and free from flux and all contaminants. Use of no clean flux is not acceptable.
- 6 - Provide serial numbers to the assembled boards for identification.
- 7 - The assembled board are wrapped in ESD Covers(individual) and packed securely before shipment.



 TEXAS INSTRUMENTS		PROC154E1
BOARD NAME: AM69 PROCESSOR STARTER KIT	REV: E1	DESCRIPTION:
SCALE: 1	DATE: 12/10/2022	SHEET OF 23