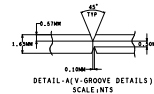
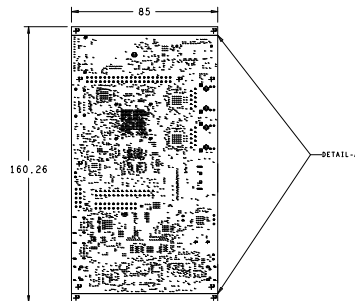



DRILL CHART - TOP 10 WELDS				
ALL UNITS ARE IN INCHES				
SOURCE	SIZE	TOLERANCE	PLATED	QTY
+	8.0	-3.0/-3.3	PLATED	2718
+	36.0	-3.0/-3.3	PLATED	68
+	40.0	-3.0/-3.0	PLATED	6
+	40.0	-3.0/-3.3	PLATED	81
+	52.0	-1.0/-1.3	PLATED	6
+	36.0	-3.0/-3.3	PLATED	4
+	110.0	-3.0/-3.3	PLATED	1
+	32.0	-3.0/-3.0	NON-PLATED	4
+	34.0	-1.0/-1.3	NON-PLATED	2
+	34.0	-3.0/-3.0	NON-PLATED	1
+	44.0	-2.0/-2.3	NON-PLATED	2
+	40.0	-3.0/-3.3	NON-PLATED	2
+	62.0	-2.0/-2.0	NON-PLATED	2
+	100.0	-3.0/-3.3	NON-PLATED	6
+	52.0	-2.0/-2.0	NON-PLATED	1
+	128.0	-3.0/-3.3	NON-PLATED	4
+	46.0122.0	-0.0/-0.3	PLATED	4
+	46.0174.0	-0.0/-0.3	PLATED	4
+	49.0144.0	-3.0/-3.3	PLATED	4
+	49.0144.0	-2.0/-2.0	PLATED	1
+	110.0128.0	-0.0/-0.3	PLATED	2

[illegible]

IMPEDANCE SPECIFICATIONS						
SL#	TYPE	LAYER	TRACEWIDTH(Mils)	SPACING(Mils)	IMPEDANCE(Ohms)	REF. LAYER
01	EDGE COUPLED STRIPLINE	1,1,6	1.2	3	100	12/14, 13/17
02	EDGE COUPLED STRIPLINE	1,1,6	4.75	6.35	100	12/14, 13/17
03	EDGE COUPLED STRIPLINE	1,1,6	5.3	5.15	100	12/14, 13/17
04	EDGE COUPLED MICROSTRIP	1,1,6	4.35	4.35	80	12, 17
05	EDGE COUPLED MICROSTRIP	1,1,6	1.8	NA	80	12/14, 13/17
06	EDGE COUPLED MICROSTRIP	1,1,6	5.3	NA	80	12/14, 13/17
07	EDGE COUPLED MICROSTRIP	1,1,6	5.3	NA	80	12/14, 13/17

LAYER STACKUP				
	LAYER NAME	FINISHED Cu	X-SECTION	DIELECTRIC THICKNESS [INCHES]
PRIMARY	SILKSCREEN			
PRIMARY	SOLDERMASK			
L01	PRIMARY SIDE	1.35oz		0.0034
L02	GROUND-PLANE-1	1oz		0.0034
L03	INNER-SIGNAL-1	1oz		0.0031
L04	POWER-PLANE-1	1oz		0.010
L05	POWER-PLANE-2	1oz		0.0131
L06	INNER-SIGNAL-2	1oz		0.010
L07	GROUND-PLANE-2	1oz		0.0034
L08	SECONDARY SIDE	1.35oz		0.0034
SECONDARY	SOLDERMASK			
SECONDARY	SILKSCREEN			



SIGNATURES		DATE		 TEXAS INSTRUMENTS		PROC124E2	
LAYOUT BY KK		170223					
REVIEWED BY ZA		170223		AM62x LP EVB BOARD			
APPROVED BY RC		170223					
		SIZE D		Rev E2			
		SCALE: NONE		SHEET 1 OF 15			