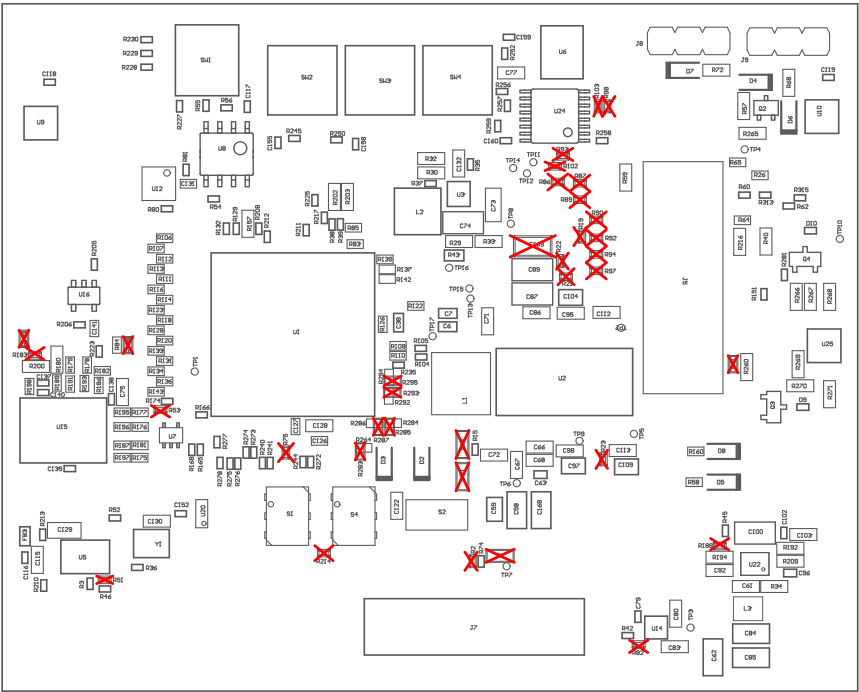


Z24 ■ These assemblies must comply with workmanship standards IPC-A-610 Class 2, unless otherwise specified.
Z23 ■ These assemblies must be clean and free from flux and all contaminants. Use of no clean flux is not acceptable.
Z22 ■ These assemblies are ESD sensitive, ESD precautions shall be observed.
Z21 ■ ~~Install label in silkscreened box after final wash. Text shall be 8 pt font. Text shall be per the Label Table in the PDF schematic.~~



ALL ARTWORK VIEWED FROM TOP SIDE	BOARD #: PROC195	REV: E1	SUN REV: 327 [Locally Modified]
LAYER NAME =	TID #: N/A		
PLOT NAME = Top Assembly Drawing	GENERATED : 27-06-2024 12:55:56		TEXAS INSTRUMENTS

