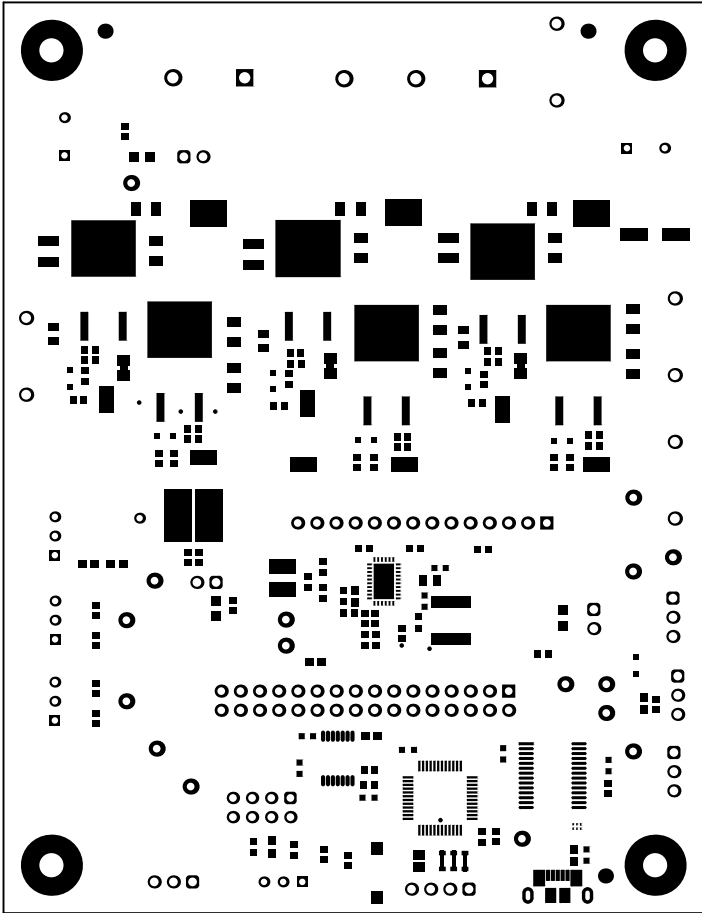
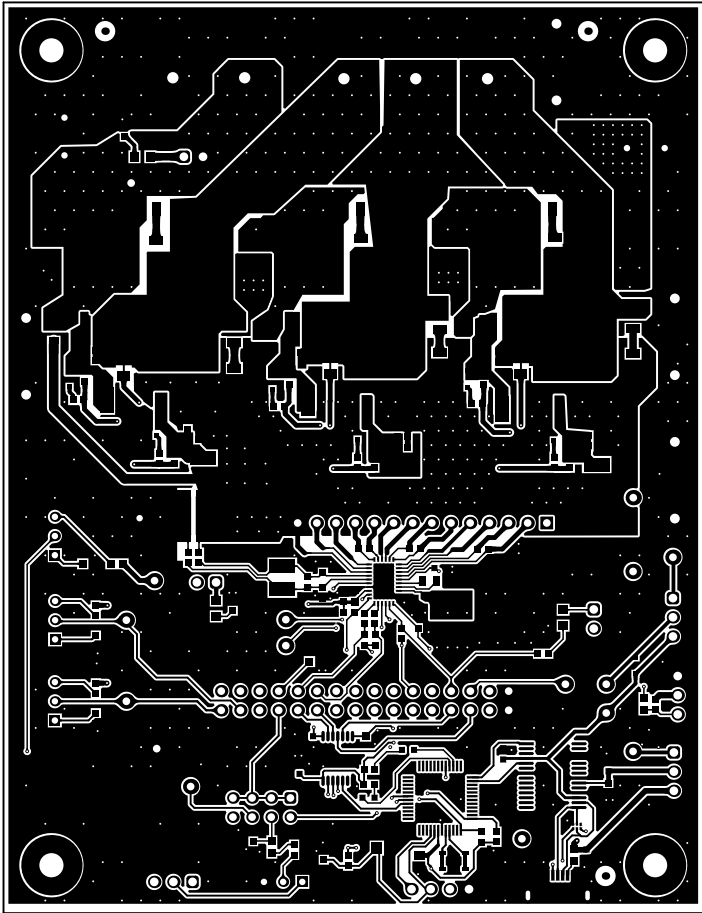


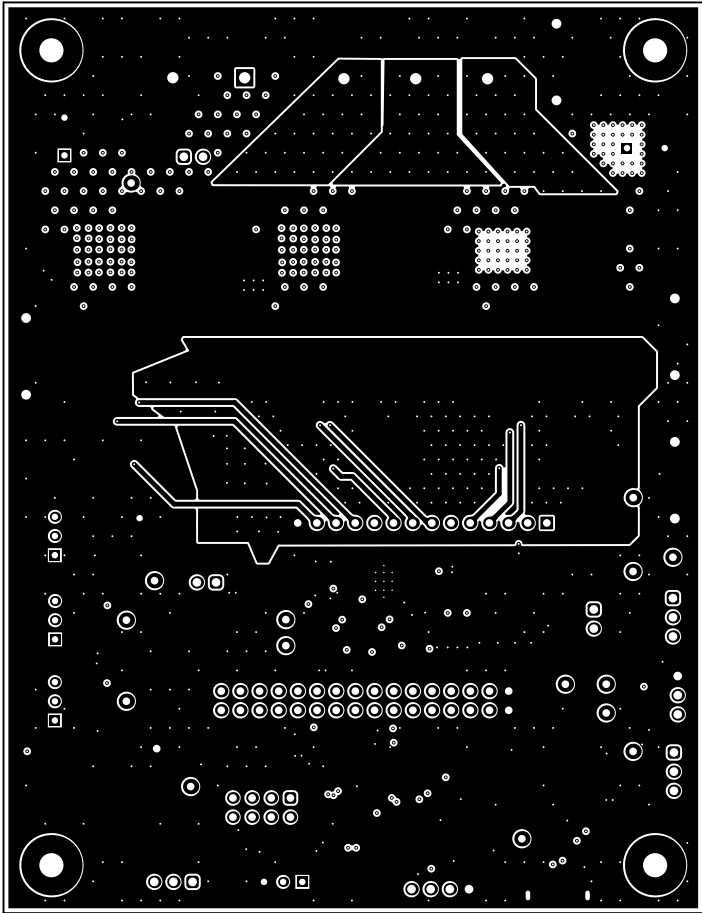
| | | | |
|----------------------------------|---------------------------------|--------|--------------------------------|
| ALL ARTWORK VIEWED FROM TOP SIDE | BOARD #: MCF8329HS_32RRY_EUM | REV: A | SUN REV: Not In VersionControl |
| LAYER NAME = Top Overlay | TID #: N/A | | |
| PLOT NAME = Top Overlay | GENERATED : 25-09-2025 14:23:52 | | TEXAS INSTRUMENTS |



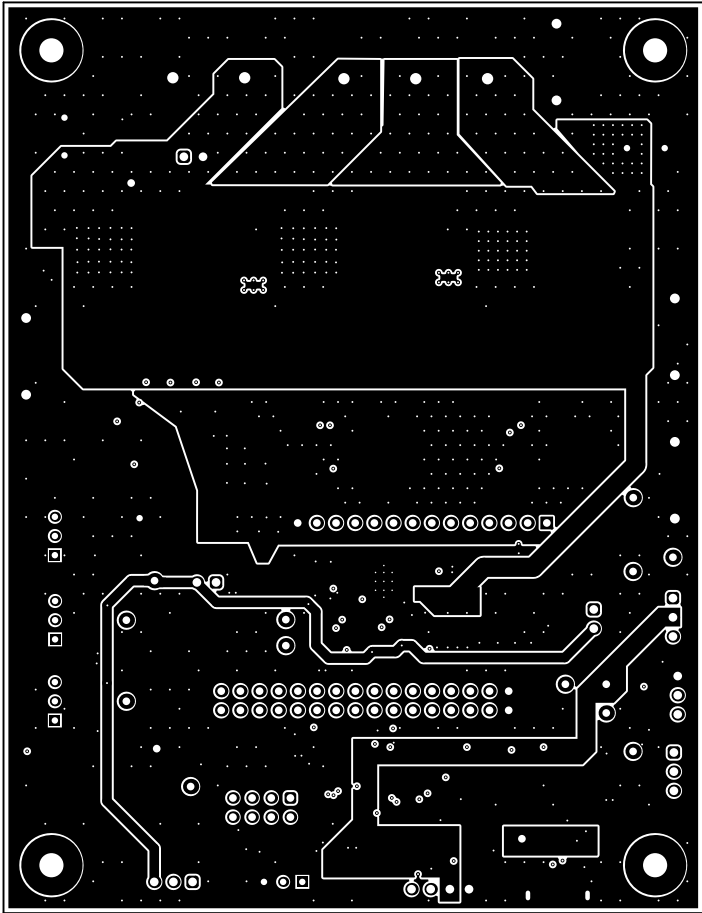
| | | | |
|----------------------------------|---------------------------------|--------|--------------------------------|
| ALL ARTWORK VIEWED FROM TOP SIDE | BOARD #: MCF8329HS_32RRY_EUM | REV: A | SUN REV: Not In VersionControl |
| LAYER NAME = Top Solder | TID #: N/A | | |
| PLOT NAME = Top Solder Mask | GENERATED : 25-09-2025 14:23:53 | | TEXAS INSTRUMENTS |



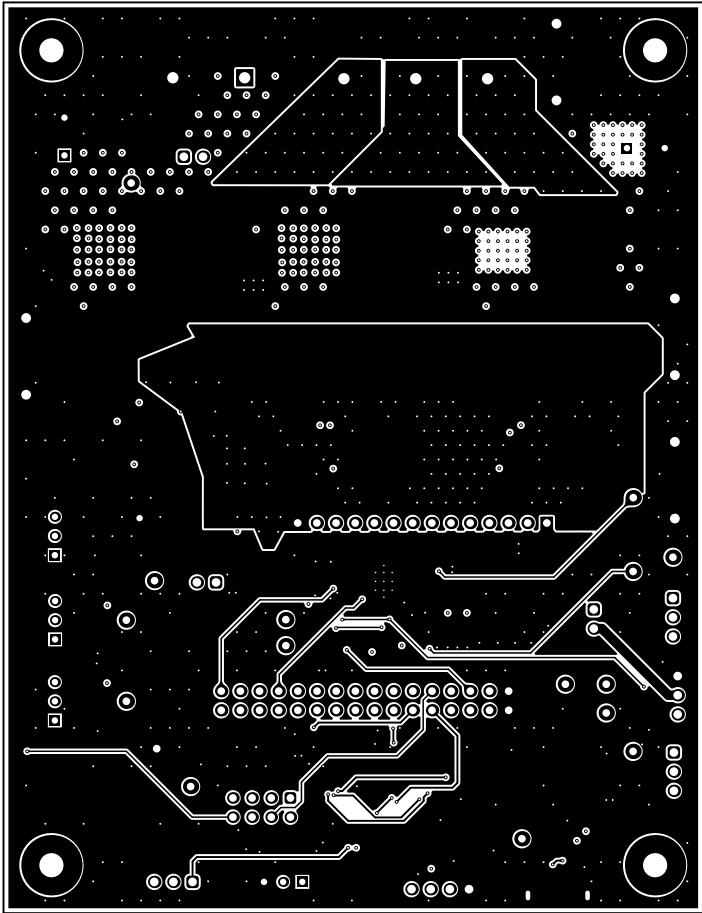
| | | | |
|----------------------------------|---------------------------------|--------|--------------------------------|
| ALL ARTWORK VIEWED FROM TOP SIDE | BOARD #: MCF8329HS_32RRY_EUM | REV: A | SUN REV: Not In VersionControl |
| LAYER NAME = Top Layer | TID #: N/A | | |
| PLOT NAME = Top Layer | GENERATED : 25-09-2025 14:23:53 | | TEXAS INSTRUMENTS |



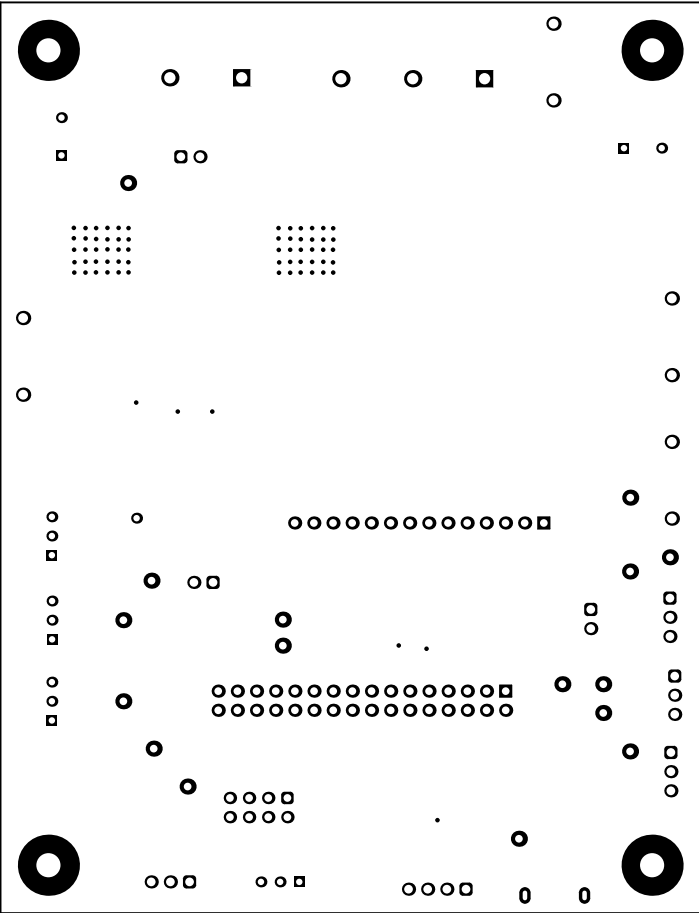
| | | | |
|----------------------------------|---------------------------------|--------|--------------------------------|
| ALL ARTWORK VIEWED FROM TOP SIDE | BOARD #: MCF8329HS_32RRY_EUM | REV: A | SUN REV: Not In VersionControl |
| LAYER NAME = GND Layer | TID #: N/A | | |
| PLOT NAME = Signal Layer 1 | GENERATED : 25-09-2025 14:23:53 | | TEXAS INSTRUMENTS |



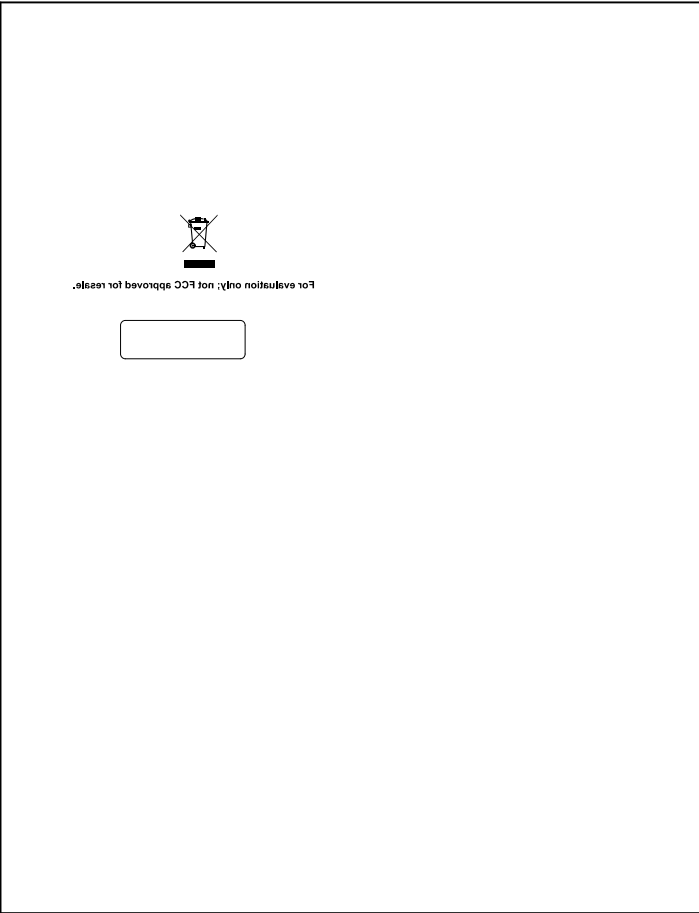
| | | | |
|----------------------------------|---------------------------------|--------|--------------------------------|
| ALL ARTWORK VIEWED FROM TOP SIDE | BOARD #: MCF8329HS_32RRY_EUM | REV: A | SUN REV: Not In VersionControl |
| LAYER NAME = Power Layer | TID #: N/A | | |
| PLOT NAME = Signal Layer 2 | GENERATED : 25-09-2025 14:23:53 | | TEXAS INSTRUMENTS |



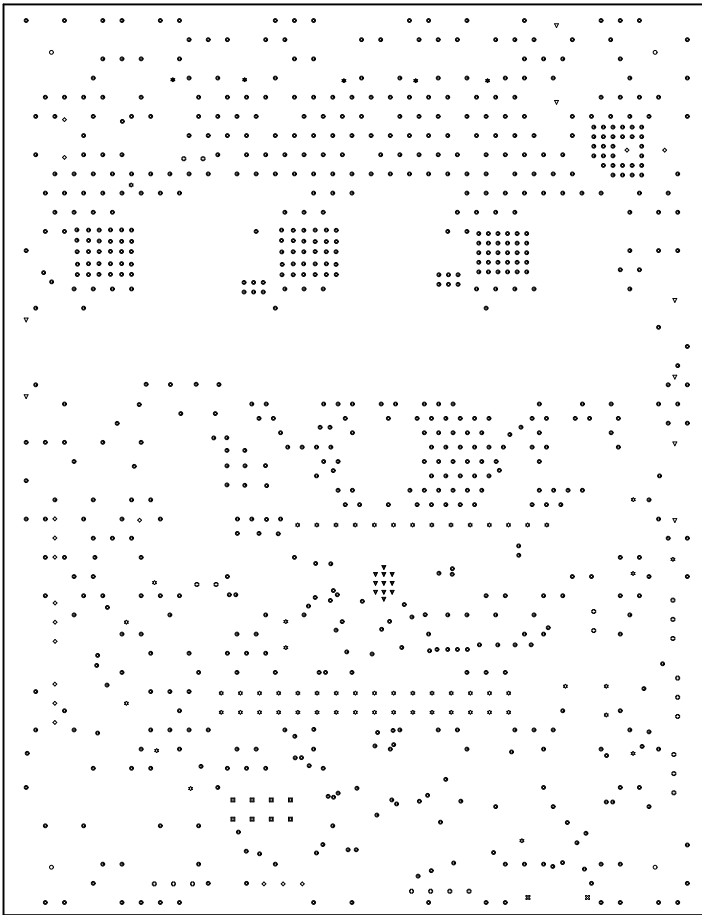
| | | | |
|----------------------------------|---------------------------------|--------|--------------------------------|
| ALL ARTWORK VIEWED FROM TOP SIDE | BOARD #: MCF8329HS_32RRY_EUM | REV: A | SUN REV: Not In VersionControl |
| LAYER NAME = Bottom Layer | TID #: N/A | | |
| PLOT NAME = Bottom Layer | GENERATED : 25-09-2025 14:23:53 | | TEXAS INSTRUMENTS |



| | | | |
|----------------------------------|---------------------------------|--------|--------------------------------|
| ALL ARTWORK VIEWED FROM TOP SIDE | BOARD #: MCF8329HS_32RRY_EUM | REV: A | SUN REV: Not In VersionControl |
| LAYER NAME = Solder Side | TID #: N/A | | |
| PLOT NAME = Bottom Solder Mask | GENERATED : 25-09-2025 14:23:53 | | TEXAS INSTRUMENTS |



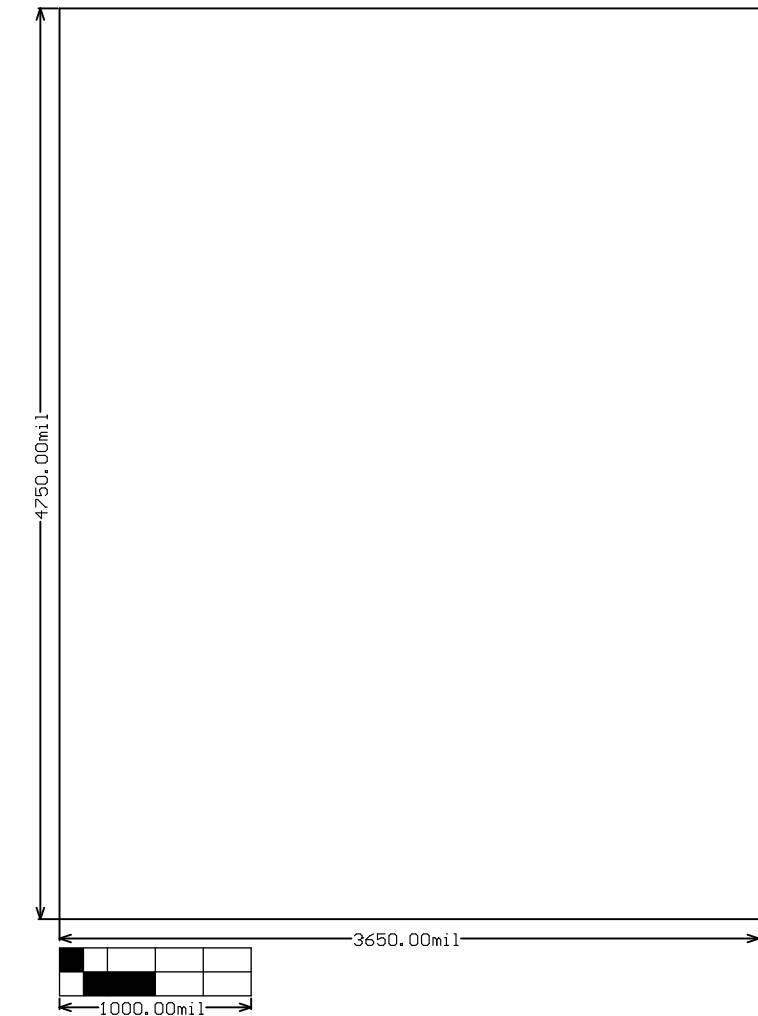
| | | | |
|----------------------------------|---------------------------------|--------|--------------------------------|
| ALL ARTWORK VIEWED FROM TOP SIDE | BOARD #: MCF8329HS_32RRY_EUM | REV: A | SUN REV: Not In VersionControl |
| LAYER NAME = Bottom Overlay | TID #: N/A | | |
| PLOT NAME = Bottom Overlay | GENERATED : 25-09-2025 14:23:53 | | TEXAS INSTRUMENTS |



| Symbol | Quantity | Finished Hole Size | Plated | Hole Type | Drill Layer Pair | Hole Tolerance |
|--------|-----------|---------------------|--------|-----------|--------------------------|----------------|
| ▽ | 11 | 7.87mil (0.200mm) | PTH | Round | Top Layer - Bottom Layer | |
| ⊙ | 754 | 10.00mil (0.254mm) | PTH | Round | Top Layer - Bottom Layer | |
| ◇ | 17 | 33.47mil (0.850mm) | PTH | Round | Top Layer - Bottom Layer | |
| ✱ | 62 | 40.00mil (1.016mm) | PTH | Round | Top Layer - Bottom Layer | |
| ■ | 8 | 40.16mil (1.020mm) | PTH | Round | Top Layer - Bottom Layer | |
| ⊕ | 22 | 45.28mil (1.150mm) | PTH | Round | Top Layer - Bottom Layer | |
| ▽ | 8 | 51.18mil (1.300mm) | PTH | Round | Top Layer - Bottom Layer | |
| ✱ | 5 | 59.06mil (1.500mm) | PTH | Round | Top Layer - Bottom Layer | |
| ○ | 4 | 125.98mil (3.200mm) | PTH | Round | Top Layer - Bottom Layer | |
| ⊗ | 2 | 23.62mil (0.600mm) | PTH | Slot | Top Layer - Bottom Layer | |
| | 893 Total | | | | | |

Slot definitions : Routed Path Length = Calculated from tool start centre position to tool end centre position.
Hole Length = Routed Path Length + Tool Size = Slot length as defined in the PCB layout

| | | | |
|----------------------------------|---------------------------------|--------|--------------------------------|
| ALL ARTWORK VIEWED FROM TOP SIDE | BOARD #: MCF8329HS_32RRY_EUM | REV: A | SUN REV: Not In VersionControl |
| LAYER NAME = Drill Drawing | TID #: N/A | | |
| PLOT NAME = Drill Drawing | GENERATED : 25-09-2025 14:23:53 | | TEXAS INSTRUMENTS |



| | | | |
|----------------------------------|---------------------------------|--------|--------------------------------|
| ALL ARTWORK VIEWED FROM TOP SIDE | BOARD #: MCF8329HS_32RRY_EUM | REV: A | SUN REV: Not In VersionControl |
| LAYER NAME = M2 Board Dimensions | TID #: N/A | | |
| PLOT NAME = Board Dimensions | GENERATED : 25-09-2025 14:23:54 | | TEXAS INSTRUMENTS |