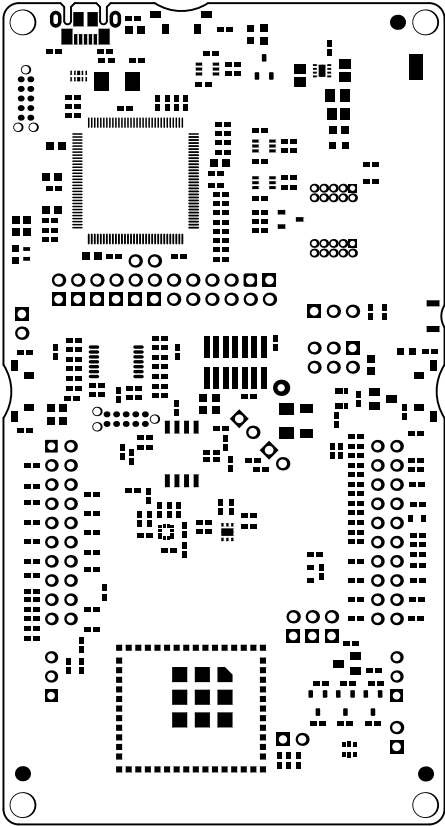
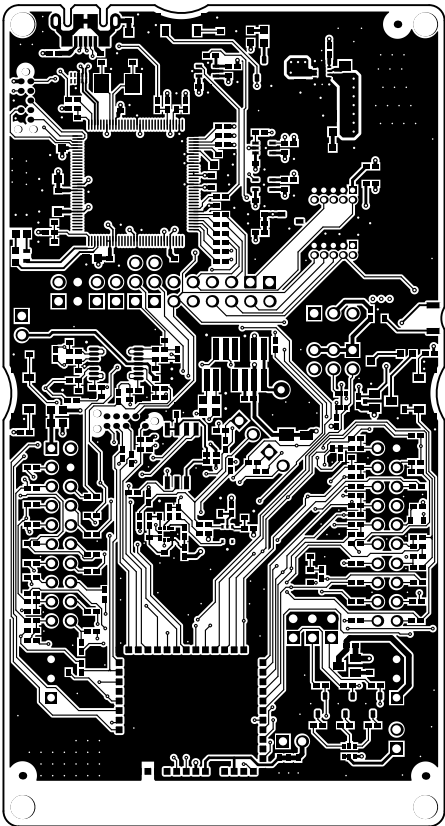


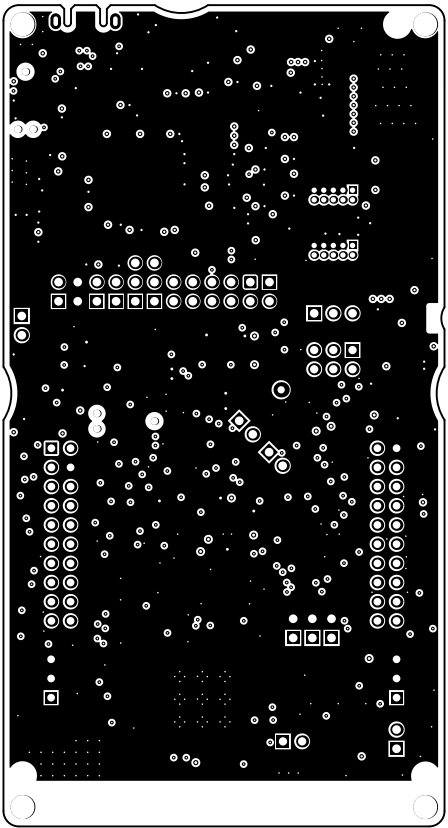
ALL ARTWORK VIEWED FROM TOP SIDE	BOARD #:	MCU065	REV:	E1	SUN REV:	cba420df9ef3cc8f2d63f82bcb65eb5d3f71833b [Locally Modified]
LAYER NAME =	SILKSCREEN TOP					
	GENERATED	:	10/2/2019	3:10:37 PM	TEXAS INSTRUMENTS	



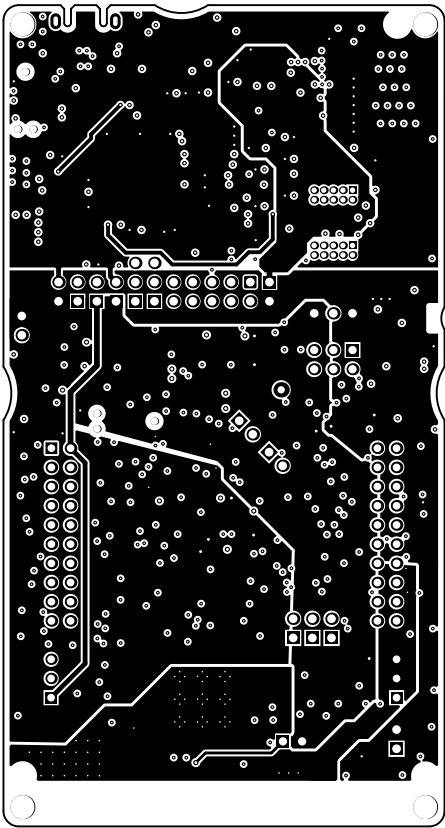
ALL ARTWORK VIEWED FROM TOP SIDE	BOARD #:	MCU065	REV:	E1	SUN REV:	cba420df9ef3cc8f2d63f82bcb65eb5d3f71833b [Locally Modified]
LAYER NAME =	Top Solder					
	GENERATED	:	10/2/2019	3:10:39 PM	TEXAS INSTRUMENTS	



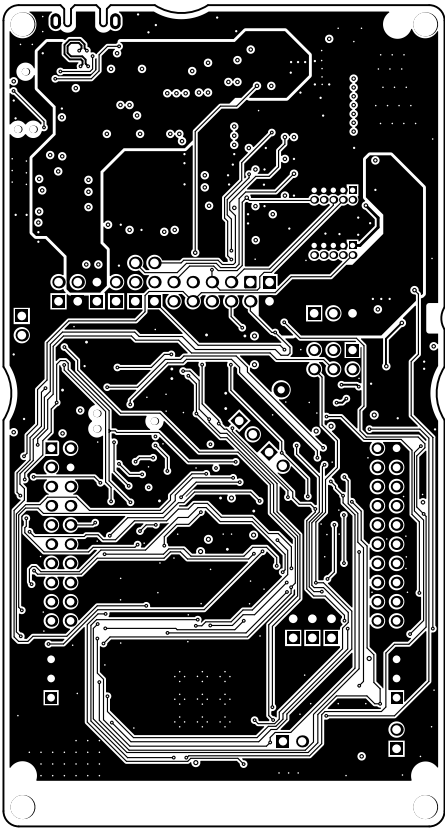
ALL ARTWORK VIEWED FROM TOP SIDE	BOARD #:	MCU065	REV:	E1	SUN REV:	cba420df9ef3cc8f2d63f82bcb65eb5d3f71833b [Locally Modified]
LAYER NAME =	TOP					
	GENERATED	:	10/2/2019	3:10:40 PM	TEXAS INSTRUMENTS	



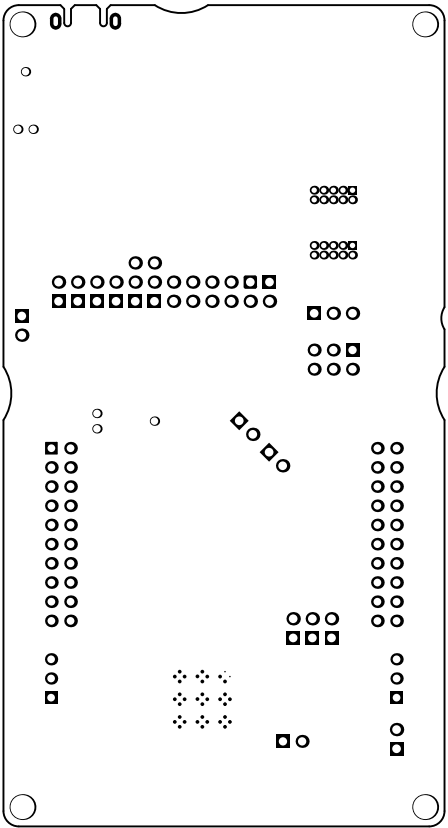
ALL ARTWORK VIEWED FROM TOP SIDE	BOARD #:	MCU065	REV:	E1	SUN REV:	cba420df9ef3cc8f2d63f82bcb65eb5d3f71833b [Locally Modified]
LAYER NAME =	GND					
	GENERATED	:	10/2/2019	3:10:42 PM	TEXAS INSTRUMENTS	



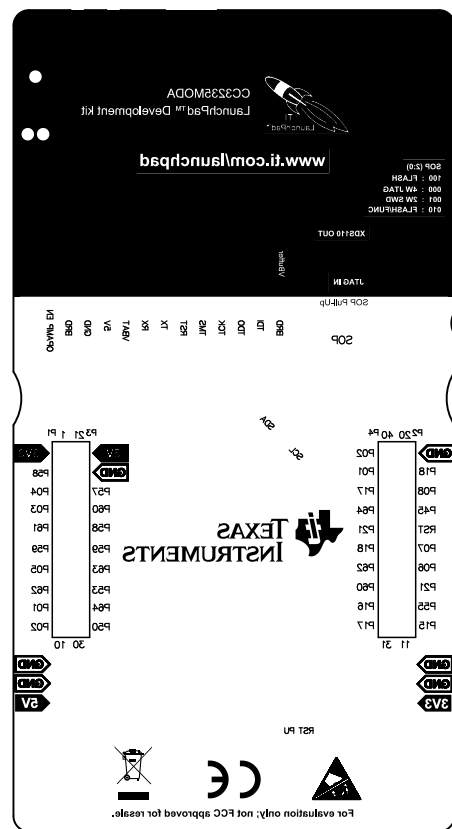
ALL ARTWORK VIEWED FROM TOP SIDE	BOARD #:	MCU065	REV:	E1	SUN REV:	cba420df9ef3cc8f2d63f82bcb65eb5d3f71833b [Locally Modified]
LAYER NAME =	PWR					
	GENERATED	:	10/2/2019	3:10:13 PM	TEXAS INSTRUMENTS	



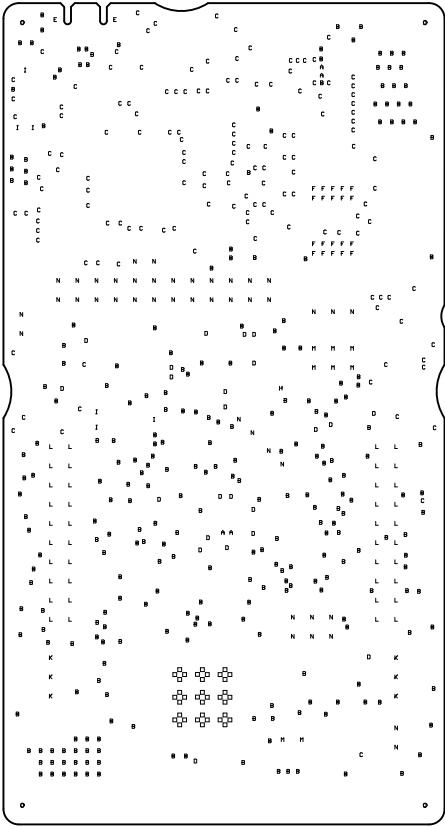
ALL ARTWORK VIEWED FROM TOP SIDE	BOARD #:	MCU065	REV:	E1	SUN REV:	cba420df9ef3cc8f2d63f82bcb65eb5d3f71833b [Locally Modified]
LAYER NAME =	BOTTOM					
	GENERATED	:	10/2/2019	3:10:11 PM	TEXAS INSTRUMENTS	



ALL ARTWORK VIEWED FROM TOP SIDE	BOARD #:MCU065	REV:EI	SUN REV:cba420df9ef3cc8f2d63f82bcb65eb5d3f71833b [Locally Modified]
LAYER NAME =Bottom Solder			
	GENERATED :10/2/20193:10:45 PM	TEXAS INSTRUMENTS	



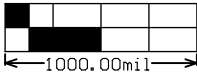
ALL artwork VIEWED FROM TOP SIDE	BOARD #: MCUC65	REV: E1	SUN REV: cba420df9ef3cc8f2d63f82bcb65b5d3f1839b [Locally Modified]
LAYER NAME = SILKSCREEN BOTTOM			
	GENERATED : 10/2/2019 3:10:46 PM	TEXAS INSTRUMENTS	



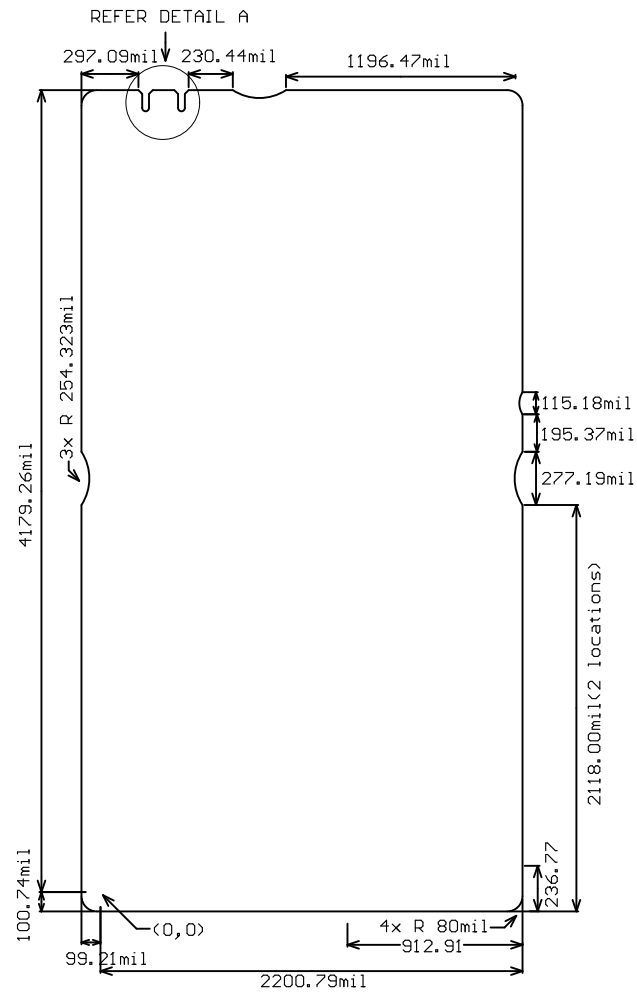
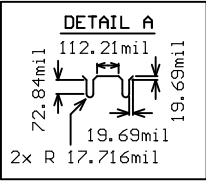
DRILL CHART :

Symbol	Count	Hole Size	Plated	Hole Type	Hole Length	Routed Path Length	Hole Tolerance
□	36	7.87mil (0.200mm)	PTH	Round	-	-	
A	4	7.87mil (0.200mm)	PTH	Round	-	-	+0.00mil/-7.87mil
B	270	8.00mil (0.203mm)	PTH	Round	-	-	+0.00mil/-4.00mil
C	142	12.00mil (0.305mm)	PTH	Round	-	-	+0.00mil/-4.00mil
D	23	15.00mil (0.381mm)	PTH	Round	-	-	+0.00mil/-4.00mil
E	2	23.62mil (0.600mm)	PTH	Slot	51.18mil (1.300mm)	27.56mil (0.700mm)	+/-3.00mil
F	20	27.95mil (0.710mm)	PTH	Round	-	-	+/-3.00mil
H	1	37.99mil (0.965mm)	PTH	Round	-	-	+/-3.00mil
I	6	39.00mil (0.991mm)	NPTH	Round	-	-	+/-2.00mil
K	6	40.00mil (1.016mm)	PTH	Round	-	-	+/-3.00mil
L	40	40.16mil (1.020mm)	PTH	Round	-	-	+/-3.00mil
M	8	43.31mil (1.100mm)	PTH	Round	-	-	+/-3.00mil
N	43	45.28mil (1.150mm)	PTH	Round	-	-	+/-3.00mil
O	4	118.11mil (3.000mm)	NPTH	Round	-	-	+/-0.00mil
O	4	125.00mil (3.175mm)	NPTH	Round	-	-	+/-2.00mil
609 Total							

Slot definitions : Routed Path Length = Calculated from tool start centre position to tool end centre position.
Hole Length = Routed Path Length + Tool Size = Slot length as defined in the PCB layout



ALL ARTWORK VIEWED FROM TOP SIDE	BOARD #: MCU065	REV: E1	SUN REV: cba420df9ef3cc8f2d63f82bcb65eb5d3f718339 [Locally Modified]
LAYER NAME = FAB			
	GENERATED : 10/2/2019 3:10:48 PM	TEXAS INSTRUMENTS	



ALL ARTWORK VIEWED FROM TOP SIDE	BOARD #:	MCU065	REV:	E1	SUN REV:	cba420df9ef3cc8f2d63f82bcb65eb5d3f71833b [Locally Modified]
LAYER NAME =	BOARD DIMENSIONS					
	GENERATED	:	10/2/2019	3:10:50 PM	TEXAS INSTRUMENTS	