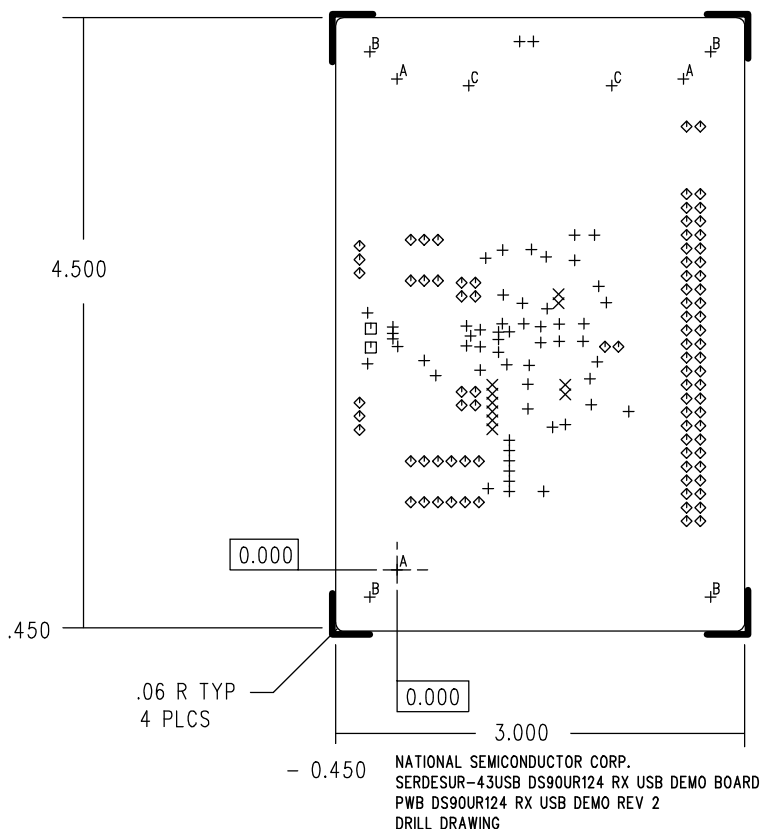


HOLE CHART				
CODE	SIZE	QTY	PLATED	TOL
+	0.011	58	YES	± .003
×	0.016	10	YES	± .003
□	0.035	2	YES	± .003
◇	0.043	86	YES	± .003
A	0.125	3	NO	+ .003 - .000
B	0.156	4	YES	± .005
C	0.265	2	YES	± .005



NOTES: UNLESS OTHERWISE SPECIFIED

1. PRIMARY COMPONENT SIDE IS SHOWN.
2. HOLES MARKED " A " ARE TOOLING HOLES, UNPLATED, AND SHALL BE "ONCE" DRILLED.
3. FABRICATE USING MASTER FILM DS90UR124 RX USB DEMO REV 2. USE BOARD OUTLINE FILE B472B0A.PHO FOR BOARD ROUTE.
4. ACCEPTABILITY SHALL BE BASED ON IPC-A-600, CLASS 2
5. MATERIAL: BASE MATERIAL IS NEMAL-1 GRADE FR-406, COLOR GREEN, 0.052 INCH NOM. THICKNESS. COPPER CLADDING SHALL BE 1/2 OZ. OUTSIDE LAYERS AND 1 OZ INSIDE LAYERS.
6. PLATING: ALL HOLES AND CONDUCTIVE SURFACES SHALL BE PLATED WITH A MIN OF .001 INCH CU. SURFACE FINISH: GOLD FLASH, .000005 MIN.
7. FABRICATION TOLERANCES:  
END PRODUCT CONDUCTOR WIDTHS AND LAND DIAMETERS SHALL NOT VARY MORE THAN .003 INCH FROM THE 1:1 DIMENSIONS OF THE MASTER PATTERN. THE CONDUCTIVE PATTERN SHALL BE POSITIONED SO THAT THE LOCATION OF ANY LAND SHALL BE WITHIN .010 INCH DIAMETER TO THE TRUE POSITION OF THE HOLE IT CIRCUMSCRIBES THE MINIMUM ANNULAR RING SHALL BE .002 INCH. BOW AND TWIST SHALL NOT EXCEED .010 INCH PER INCH.
8. SOLDERMASK BOTH SIDES PER IPC-SM-840, TYPE A, CLASS B. COLOR-GREEN. THERE SHALL BE NO SOLDERMASK ON ANY LAND.
9. SILKSCREEN THE LEGEND ON BOTH SIDES USING NON CONDUCTIVE EPOXY INK, COLOR-WHITE. THERE SHALL BE NO INK ON ANY LAND.
10. THE .008 (LAYER 1) TRACES TO BE 50 OHM SINGLE ENDED IMPEDANCE AND THE .007 TRACES (LAYER 1) TO BE 100 OHM DIFFERENTIAL IMPEDANCE AND THE DIELECTRIC REFERENCED IN BOARD STACK DETAIL IS SUGGESTED. HOWEVER, TRACE WIDTHS AND OR DIELECTRIC THICKNESS MAY BE MICRO-MODIFIED IN ORDER TO FABRICATE BOARDS TO THE REQUIRED IMPEDANCE NOMINALS TO A TOLERANCE OF +/- 5%.
11. BOARD TO BE FABRICATED IN COMPLIANCY TO ROHS REQUIREMENTS.
12. PCB MUST BE MADE OF US RECOGNIZED MATERIAL AND TRACEABLE FOR 94V-0 MINIMUM FLAMMABILITY RATING AND MANUFACTURED BY A UL RECOGNIZED PRINTED CIRCUIT BOARD SUPPLIER. PCB MUST BE PERMANENTLY MARKED WITH UL RECOGNIZED MANUFACTURER'S LOGO AND TYPE CODE AS DESIGNATED IN THE UL RECOGNIZED DIRECTORY.