

Revision History				
Rev	ECN #	Approved Date	Approved by	Notes
N/A	N/A	N/A	N/A	N/A

A

B

C

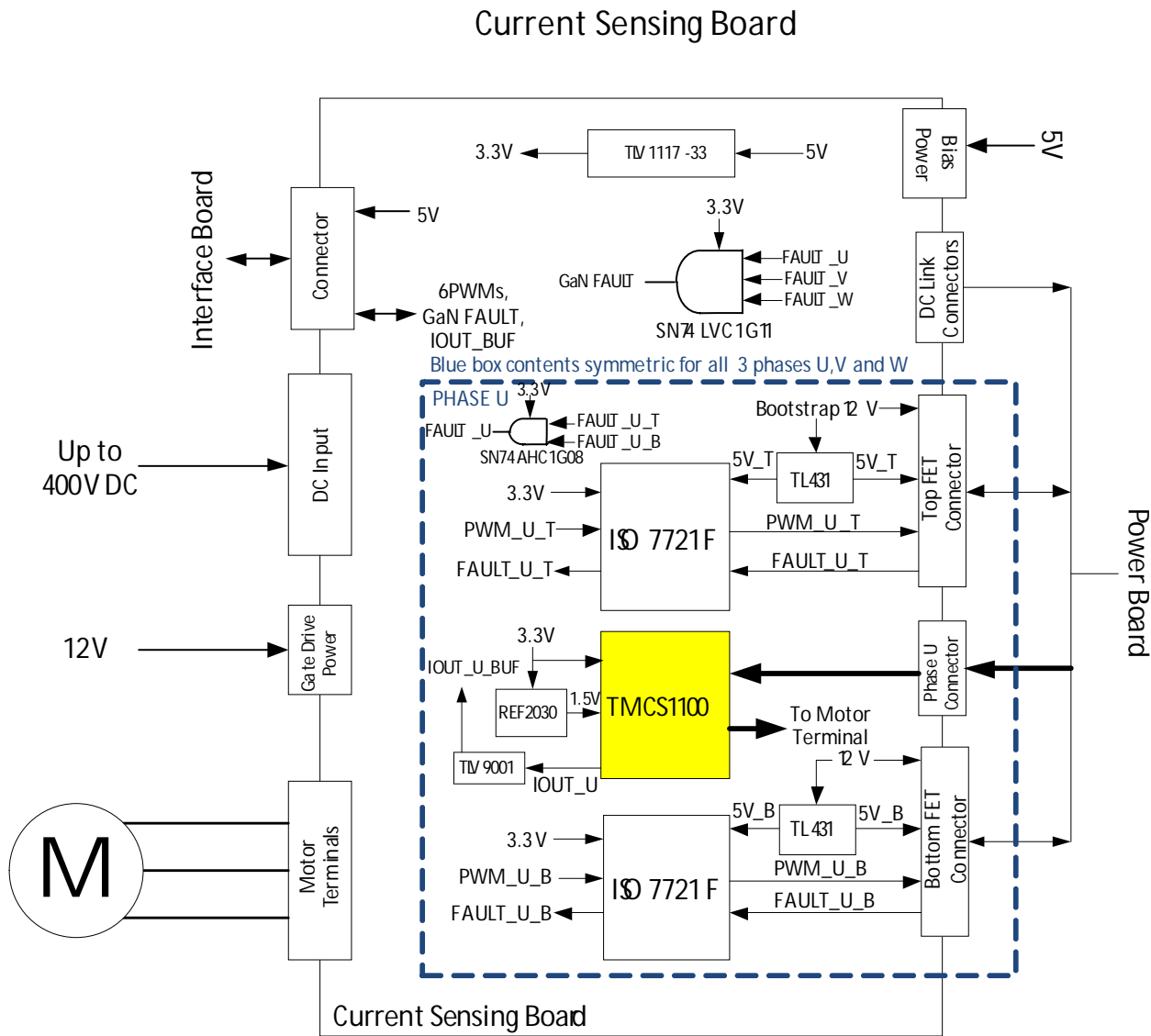
D

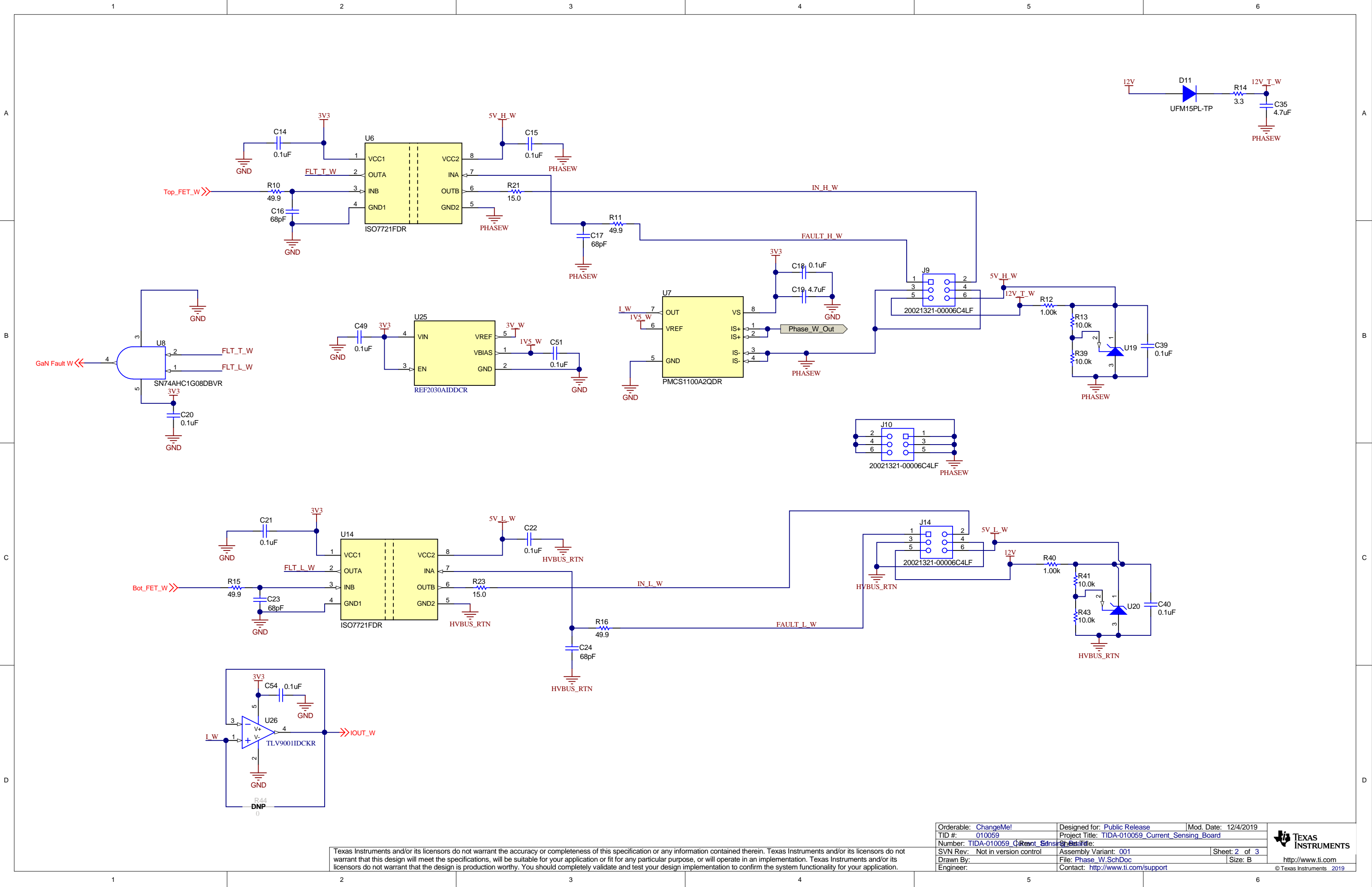
A

B

C

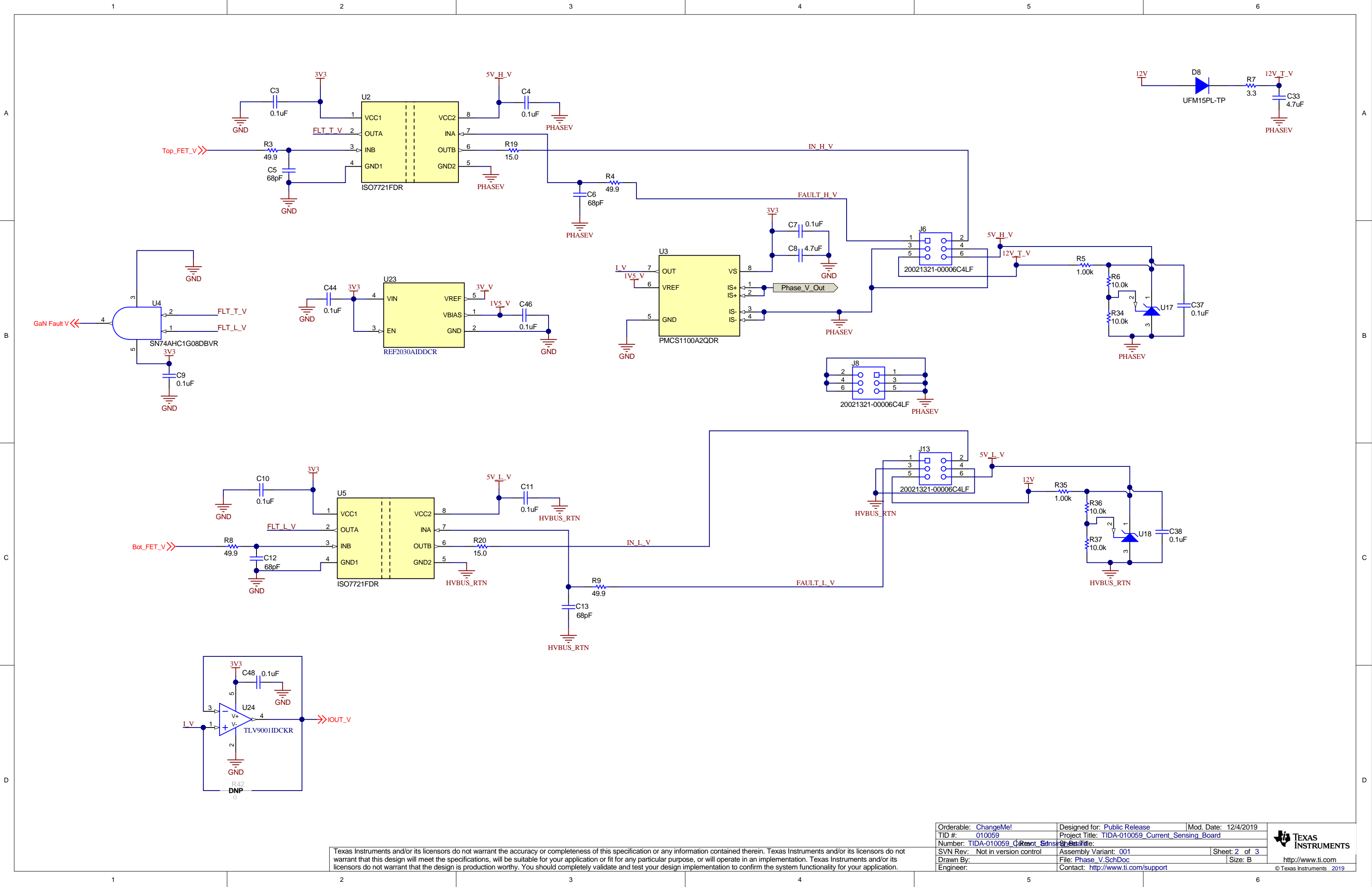
D





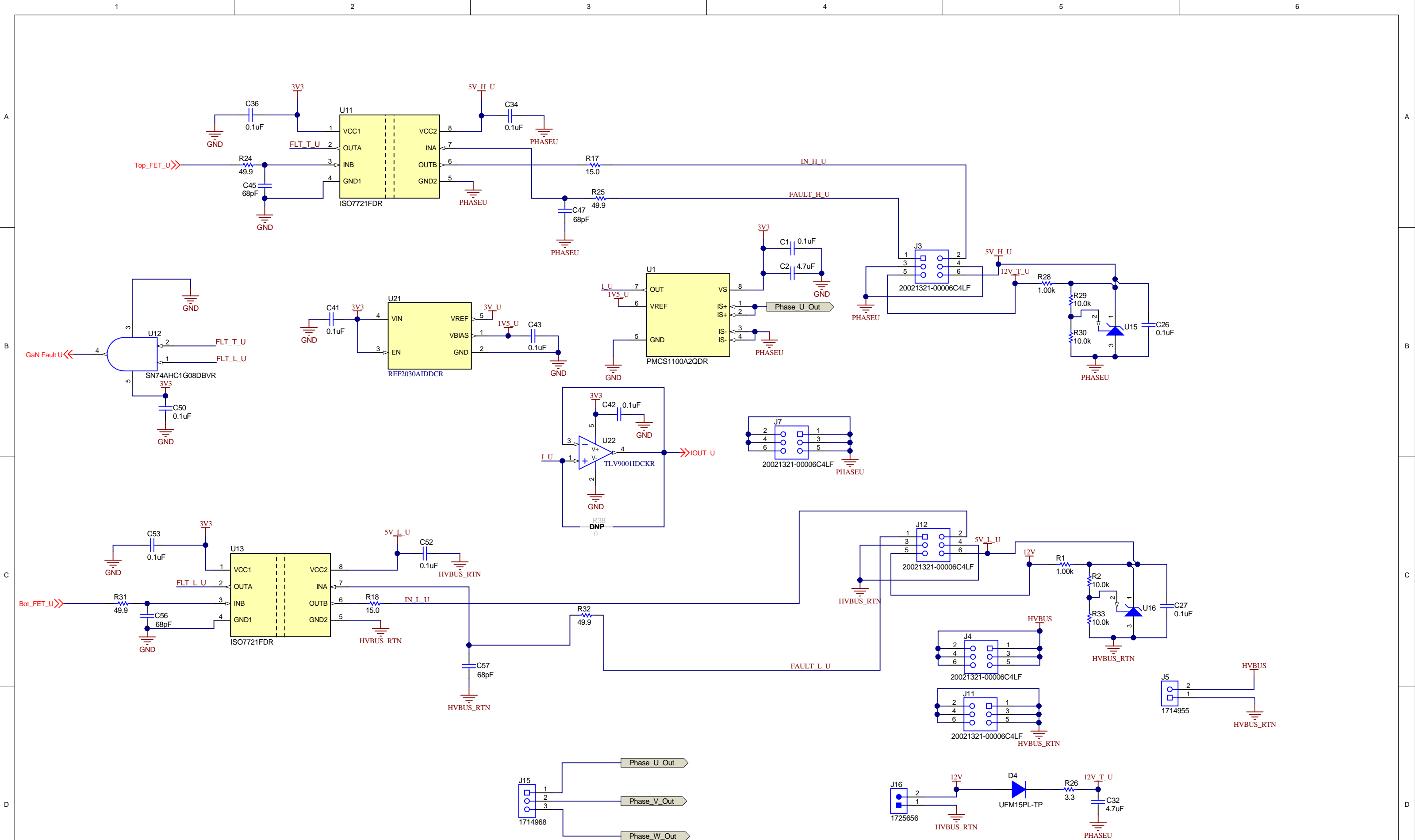
Texas Instruments and/or its licensors do not warrant the accuracy or completeness of this specification or any information contained therein. Texas Instruments and/or its licensors do not warrant that this design will meet the specifications, will be suitable for your application or fit for any particular purpose, or will operate in an implementation. Texas Instruments and/or its licensors do not warrant that the design is production worthy. You should completely validate and test your design implementation to confirm the system functionality for your application.

Orderable: ChangeMe!	Designed for: Public Release	Mod. Date: 12/4/2019
TID #: 010059	Project Title: TIDA-010059_Current_Sensing_Board	
Number: TIDA-010059_Current_Sensing_Board	Assembly Variant: 001	Sheet: 2 of 3
SVN Rev: Not in version control	File: Phase_W.SchDoc	Size: B
Drawn By:	File: Phase_W.SchDoc	
Engineer:	Contact: http://www.ti.com/support	



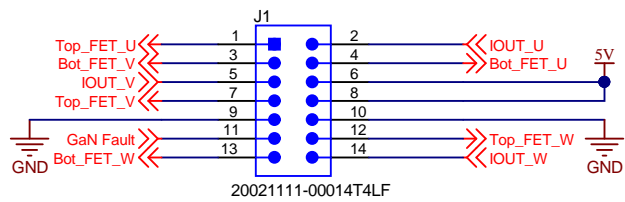
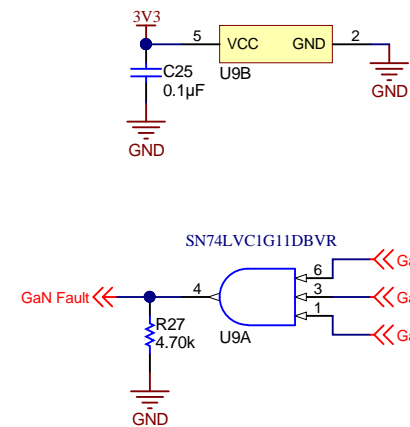
Texas Instruments and/or its licensors do not warrant the accuracy or completeness of this specification or any information contained therein. Texas Instruments and/or its licensors do not warrant that this design will meet the specifications, will be suitable for your application or fit for any particular purpose, or will operate in an implementation. Texas Instruments and/or its licensors do not warrant that the design is production worthy. You should completely validate and test your design implementation to confirm the system functionality for your application.

Orderable: ChangeMe!	Designed for: Public Release	Mod. Date: 12/4/2019
TID #: 010059	Project Title: TIDA-010059_Current_Sensing_Board	
Number: TIDA-010059_Current_Sensing_Board	Assembly Variant: 001	Sheet: 2 of 3
SVN Rev: Not in version control	File: Phase_V_SchDoc	Size: B
Drawn By:	File: Phase_V_SchDoc	
Engineer:	Contact: http://www.ti.com/support	

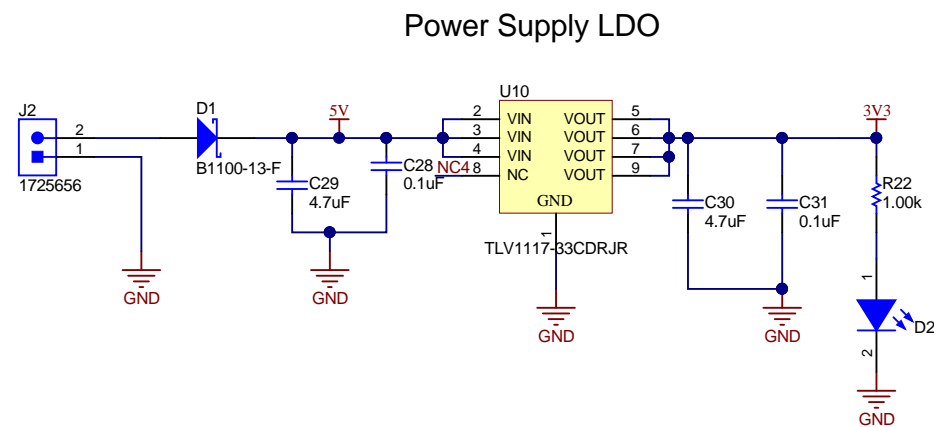


Texas Instruments and/or its licensors do not warrant the accuracy or completeness of this specification or any information contained therein. Texas Instruments and/or its licensors do not warrant that this design will meet the specifications, will be suitable for your application or fit for any particular purpose, or will operate in an implementation. Texas Instruments and/or its licensors do not warrant that the design is production worthy. You should completely validate and test your design implementation to confirm the system functionality for your application.

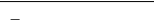
Orderable: ChangeMe!	Designed for: Public Release	Mod. Date: 12/4/2019
TID #: 010059	Project Title: TIDA-010059_Current_Sensing_Board	
Number: TIDA-010059_Current_Sensing_Board	Assembly Variant: .001	Sheet: 2 of 3
SVN Rev: Not in version control	File: Phase_U_SchDoc	Size: B
Drawn By:	File: Phase_U_SchDoc	
Engineer:	Contact: http://www.ti.com/support	



Control Card Connector



Texas Instruments and/or its licensors do not warrant the accuracy or completeness of this specification or any information contained therein. Texas Instruments and/or its licensors do not warrant that this design will meet the specifications, will be suitable for your application or fit for any particular purpose, or will operate in an implementation. Texas Instruments and/or its licensors do not warrant that the design is production worthy. You should completely validate and test your design implementation to confirm the system functionality for your application.

Orderable: ChangeMe!	Designed for: Public Release	Mod. Date: 12/4/2019	
TID #: 010059	Project Title: TIDA-010059_Current_Sensing_Board		
Number: TIDA-010059_Current_Sensing_Board			
SVN Rev: Not in version control	Assembly Variant: 001	Sheet: 2 of 3	
Drawn By:	File: MCU_Interface.SchDoc	Size: B	
Engineer:	Contact: http://www.ti.com/support		http://www.ti.com © Texas Instruments 2019

DNP

FID1

DNP

FID2

DNP

FID3



PCB
LOGO

Pb-Free Symbol

PCB
LOGO

FCC disclaimer

PCB
LOGO

WEEE logo

ZZ1

Label Assembly Note

This Assembly Note is for PCB labels only

ZZ2

Assembly Note

These assemblies are ESD sensitive, ESD precautions shall be observed.

ZZ3

Assembly Note

These assemblies must be clean and free from flux and all contaminants. Use of no clean flux is not acceptable.

ZZ4

Assembly Note

These assemblies must comply with workmanship standards IPC-A-610 Class 2, unless otherwise specified.

Variant/Label Table	
Variant	Label Text
001	ChangeMe!
002	ChangeMe!