

~~220 ■ These assemblies must be clean and free from flux and all contaminants. Use of no clean flux is not acceptable.~~

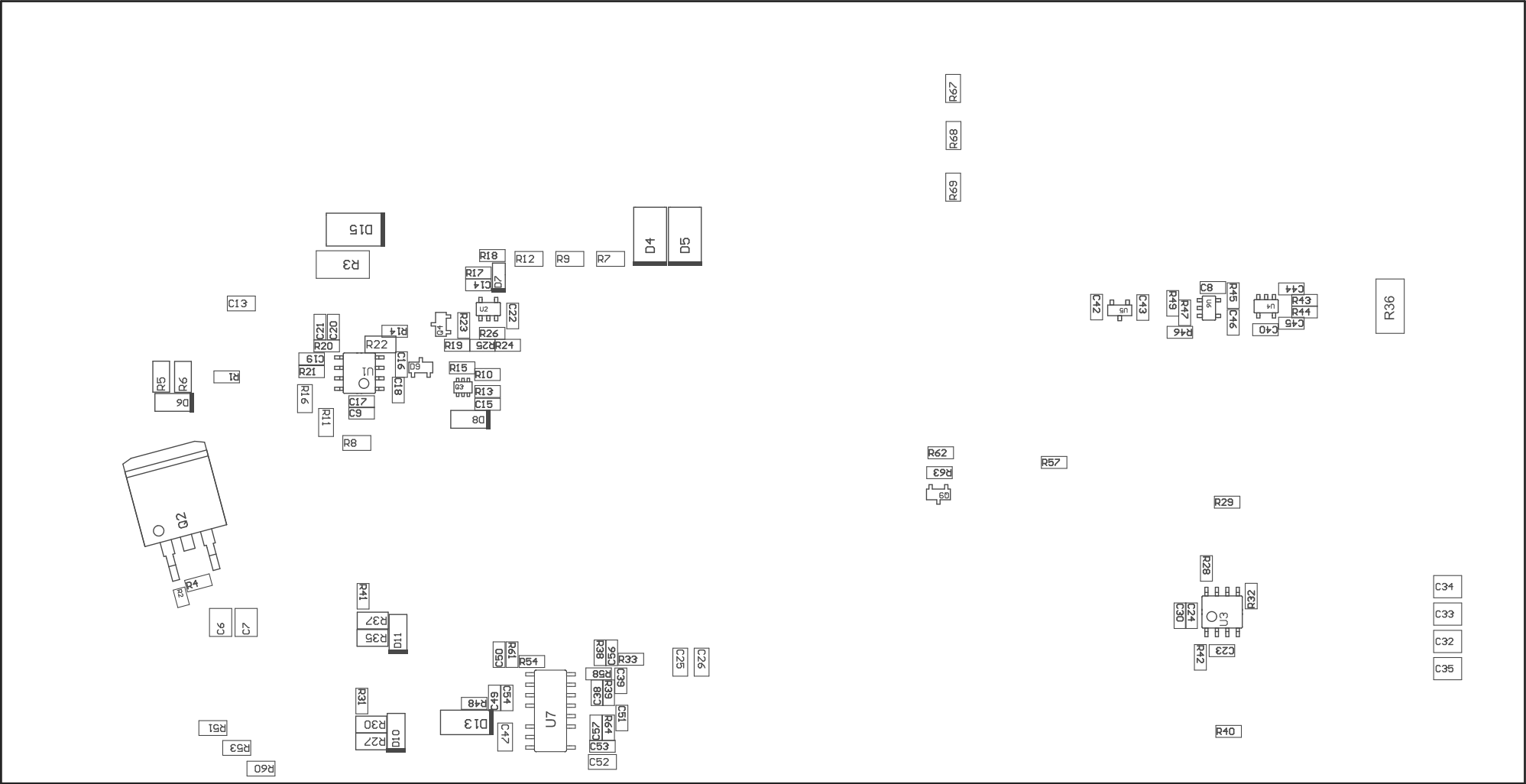
The floor plan includes several rooms and areas with their respective dimensions:

- J1**: 10' x 10'
- C3**: 8' x 10'
- C4**: 10' x 10'
- L3**: 10' x 10'
- C10**: 10' x 10'
- C2**: 8' x 10'
- C11**: 8' x 10'
- D3**: 10' x 10'
- L7**: 10' x 10'
- C5**: 10' x 10'
- D2**: 10' x 10'
- Q1**: 10' x 10'
- L1**: 10' x 10'
- C6**: 10' x 10'
- C7**: 10' x 10'
- C8**: 10' x 10'
- C9**: 10' x 10'
- C10**: 10' x 10'
- C11**: 10' x 10'
- C12**: 10' x 10'
- C13**: 10' x 10'
- C14**: 10' x 10'
- C15**: 10' x 10'
- C16**: 10' x 10'
- C17**: 10' x 10'
- C18**: 10' x 10'
- C19**: 10' x 10'
- C20**: 10' x 10'
- C21**: 10' x 10'
- C22**: 10' x 10'
- C23**: 10' x 10'
- C24**: 10' x 10'
- C25**: 10' x 10'
- C26**: 10' x 10'
- C27**: 10' x 10'
- C28**: 10' x 10'
- C29**: 10' x 10'
- C30**: 10' x 10'
- C31**: 10' x 10'
- C32**: 10' x 10'
- C33**: 10' x 10'
- C34**: 10' x 10'
- C35**: 10' x 10'
- C36**: 10' x 10'
- C37**: 10' x 10'
- C38**: 10' x 10'
- C39**: 10' x 10'
- C40**: 10' x 10'
- C41**: 10' x 10'
- C42**: 10' x 10'
- C43**: 10' x 10'
- C44**: 10' x 10'
- C45**: 10' x 10'
- C46**: 10' x 10'
- C47**: 10' x 10'
- C48**: 10' x 10'
- C49**: 10' x 10'
- C50**: 10' x 10'
- C51**: 10' x 10'
- C52**: 10' x 10'
- C53**: 10' x 10'
- C54**: 10' x 10'
- C55**: 10' x 10'
- C56**: 10' x 10'
- C57**: 10' x 10'
- C58**: 10' x 10'
- C59**: 10' x 10'
- C60**: 10' x 10'
- C61**: 10' x 10'
- C62**: 10' x 10'
- C63**: 10' x 10'
- C64**: 10' x 10'
- C65**: 10' x 10'
- C66**: 10' x 10'
- C67**: 10' x 10'
- C68**: 10' x 10'
- C69**: 10' x 10'
- C70**: 10' x 10'
- C71**: 10' x 10'
- C72**: 10' x 10'
- C73**: 10' x 10'
- C74**: 10' x 10'
- C75**: 10' x 10'
- C76**: 10' x 10'
- C77**: 10' x 10'
- C78**: 10' x 10'
- C79**: 10' x 10'
- C80**: 10' x 10'
- C81**: 10' x 10'
- C82**: 10' x 10'
- C83**: 10' x 10'
- C84**: 10' x 10'
- C85**: 10' x 10'
- C86**: 10' x 10'
- C87**: 10' x 10'
- C88**: 10' x 10'
- C89**: 10' x 10'
- C90**: 10' x 10'
- C91**: 10' x 10'
- C92**: 10' x 10'
- C93**: 10' x 10'
- C94**: 10' x 10'
- C95**: 10' x 10'
- C96**: 10' x 10'
- C97**: 10' x 10'
- C98**: 10' x 10'
- C99**: 10' x 10'
- C100**: 10' x 10'

ASSEMBLY VARIANT:

001

PCB VIEWED FROM TOP SIDE	BOARD #:	TIDA-010080	REV:	E1	SUN REV:	Not In VersionControl
	TID #:	TIDA-010080				
PLOT NAME = Top Assembly Drawing	GENERATED :	1/25/2021	3:01:07 PM	TEXAS INSTRUMENTS		



COMPONENTS MARKED 'DNP' SHOULD NOT BE POPULATED.
ASSEMBLY VARIANT: 001

PCB VIEWED FROM BOTTOM SIDE	BOARD #:	TIDA-010080	REV:	E1	SUN REV:	Not In VersionControl
	TID #:	TIDA-010080				
PLOT NAME = Bottom Assembly Drawing	GENERATED :	1/25/2021	3:01:09 PM	TEXAS INSTRUMENTS		