

© COPYRIGHT 2014 TEXAS INSTRUMENTS  
UNPUBLISHED, ALL RIGHTS RESERVED

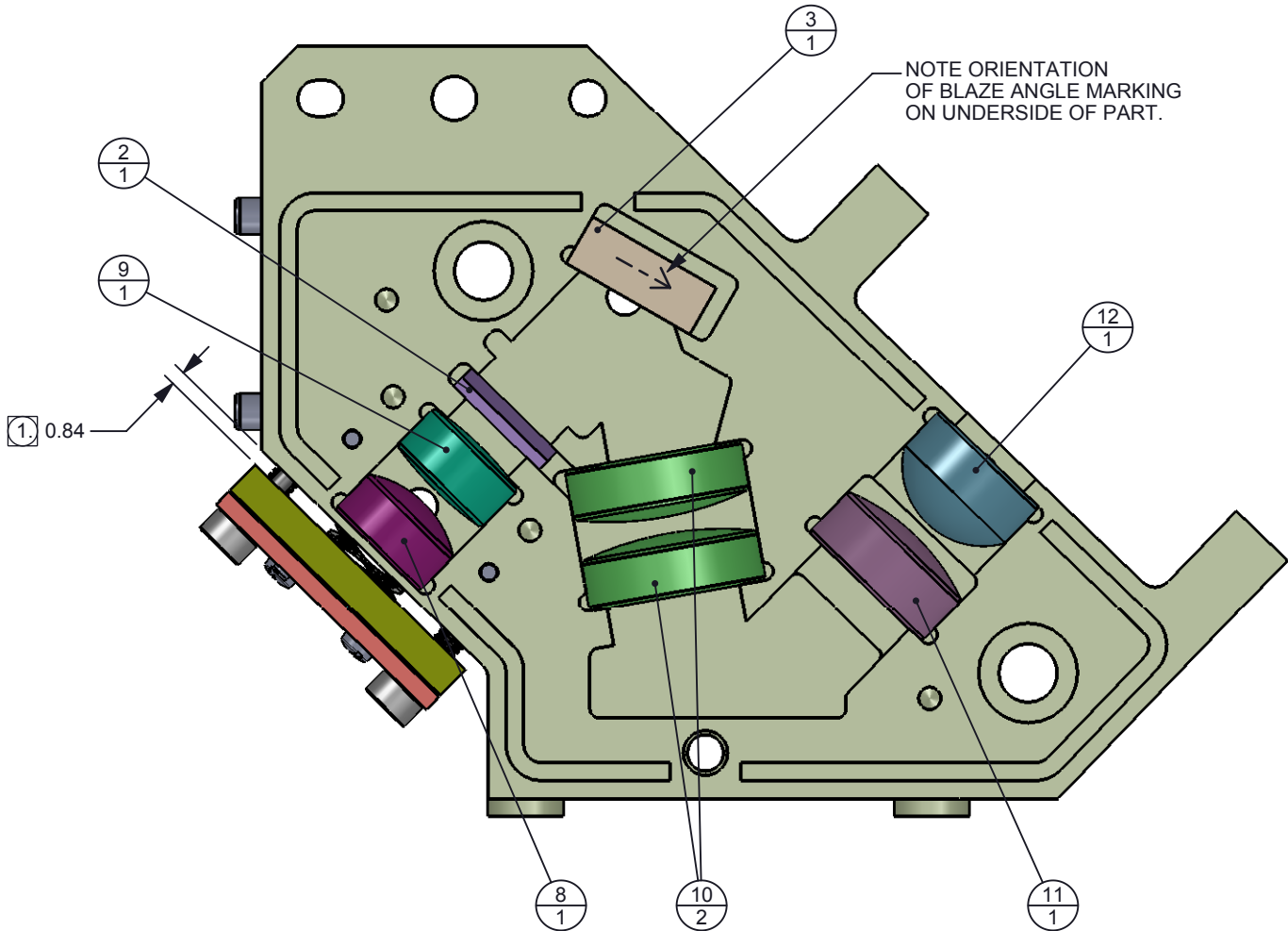
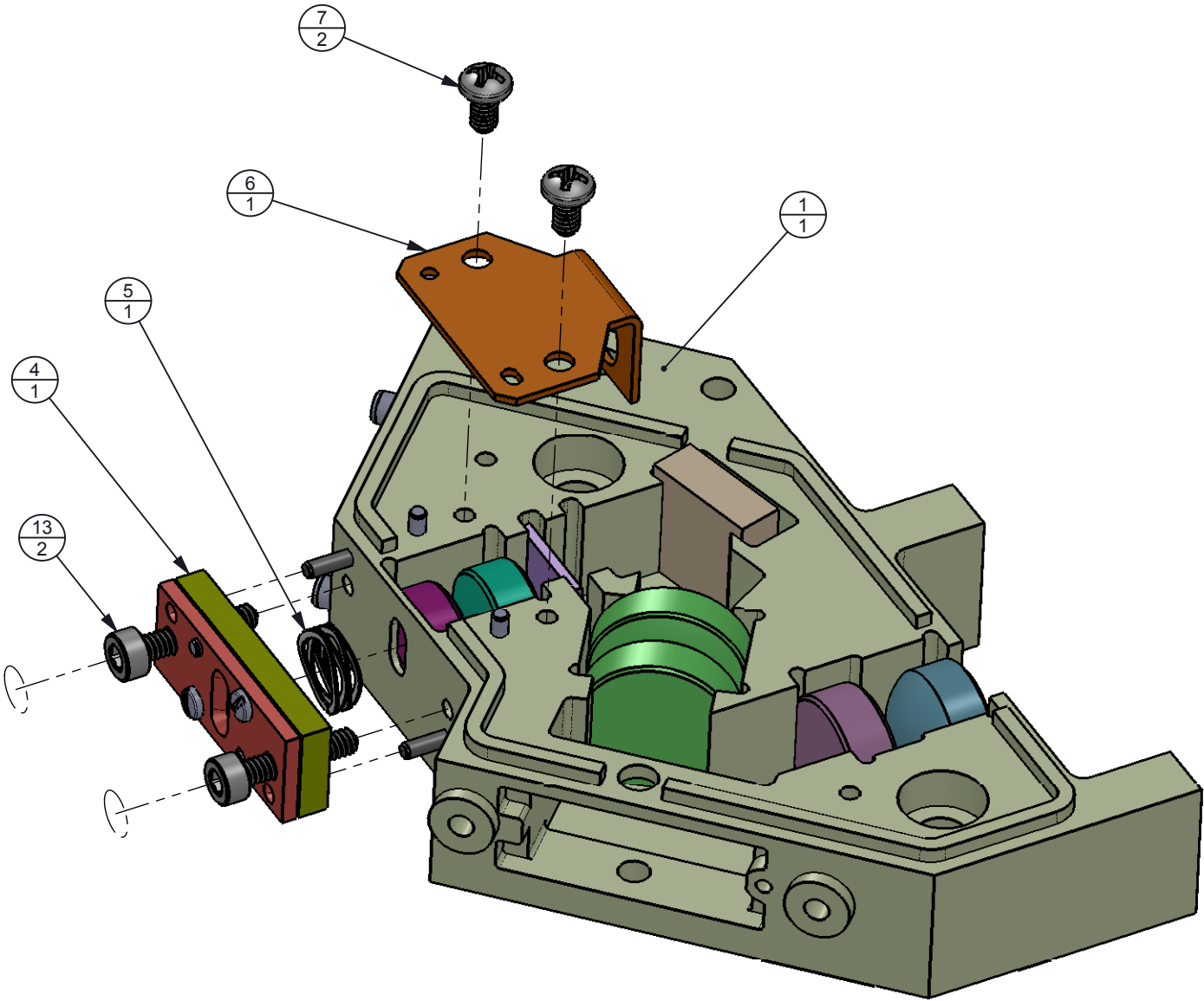
REVISIONS			
REV	DESCRIPTION	DATE	BY
A	RELEASED FOR PROTOTYPE BUILD	6/17/2014	RDR
B	REVISED FOR RELEASE	9/15/2014	RDR

D

C

B

A



BILL OF MATERIAL

ITEM NO.	QTY.	TI PART NUMBER	DESCRIPTION	VENDOR	VENDOR P/N	MATERIAL
1	1	2513920	CHASSIS ASSEMBLY	MILLTECH	2513920	SEE PART SPECS
2	1	2513894	BANDPASS FILTER	JDSU	885nm LWP 0.7x7mm SQ	BOROFLOAT
3	1	2513895	GRATING	RICHARDSON GRATINGS	32A12BF01-640R	BOROSILICATE FLOAT W/ ALUM COATING
4	1	2513881	SLIT ADJUSTMENT SUB-ASSY	TI	2513881	SEE COMPONENT DRAWING
5	1	LWM06 006 0203S	WAVE SPRING	LEE SPRING	LWM06 006 0203S	17-7 PH STAINLESS STEEL
6	1	2513905	APERTURE	MILLTECH	2513905	304 STAINLESS STEEL
7	2	92000A001	SCREW, M1.6X0.35 X 3LG PHP, SS	MCMaster-CARR	92000A001	18-8 STAINLESS ST
8	1	2513911	LENS 1	OPTIMAX	2513911	OHARA S-LAM66
9	1	2513912	LENS 2	OPTIMAX	2513912	OHARA S-LAM66
10	2	2513913	LENS 3 & 4	OPTIMAX	2513913	OHARA S-LAM66
11	1	2513915	LENS 5	OPTIMAX	2513915	OHARA S-LAM66
12	1	2513916	LENS 6	OPTIMAX	2513916	OHARA S-LAM66
13	2	91290A041	SCREW, M1.6X0.35 X 8LG SHCS, BLK, ALLOY STEEL	MCMaster-CARR	91290A041	BLACK-OXIDE ALLOY ST

NOTES:  
UNLESS OTHERWISE SPECIFIED:

1. SET SPACING TO 0.84MM  
PRIOR TO SLIT CALIBRATION



UNLESS OTHERWISE SPECIFIED		DWN R ROWE	DATE 6/17/2014	TEXAS INSTRUMENTS	
• DIMENSIONS ARE IN MILLIMETERS		Engr			
• TOLERANCES: ANGLES $\pm 1^\circ$ 2 PLACE DECIMALS $\pm 0.25$ 1 PLACE DECIMALS $\pm 0.50$		CQE/QA			
• DIMENSIONAL LIMITS APPLY BEFORE PROCESSES		CM			
• INTERPRET DIMENSIONS IN ACCORDANCE WITH ASME Y14.5M-1994				OPTICS / CHASSIS SUBASSY	
• REMOVE ALL BURRS AND SHARP EDGES				NIRscan Nano	
• PARENTHETICAL INFO FOR REF ONLY		Apprvd		SIZE B	DWG NO 2513880
2513871				SCALE 1:1	REV D
NEXT ASSY				SHEET 1 OF 1	
USED ON					
APPLICATION					