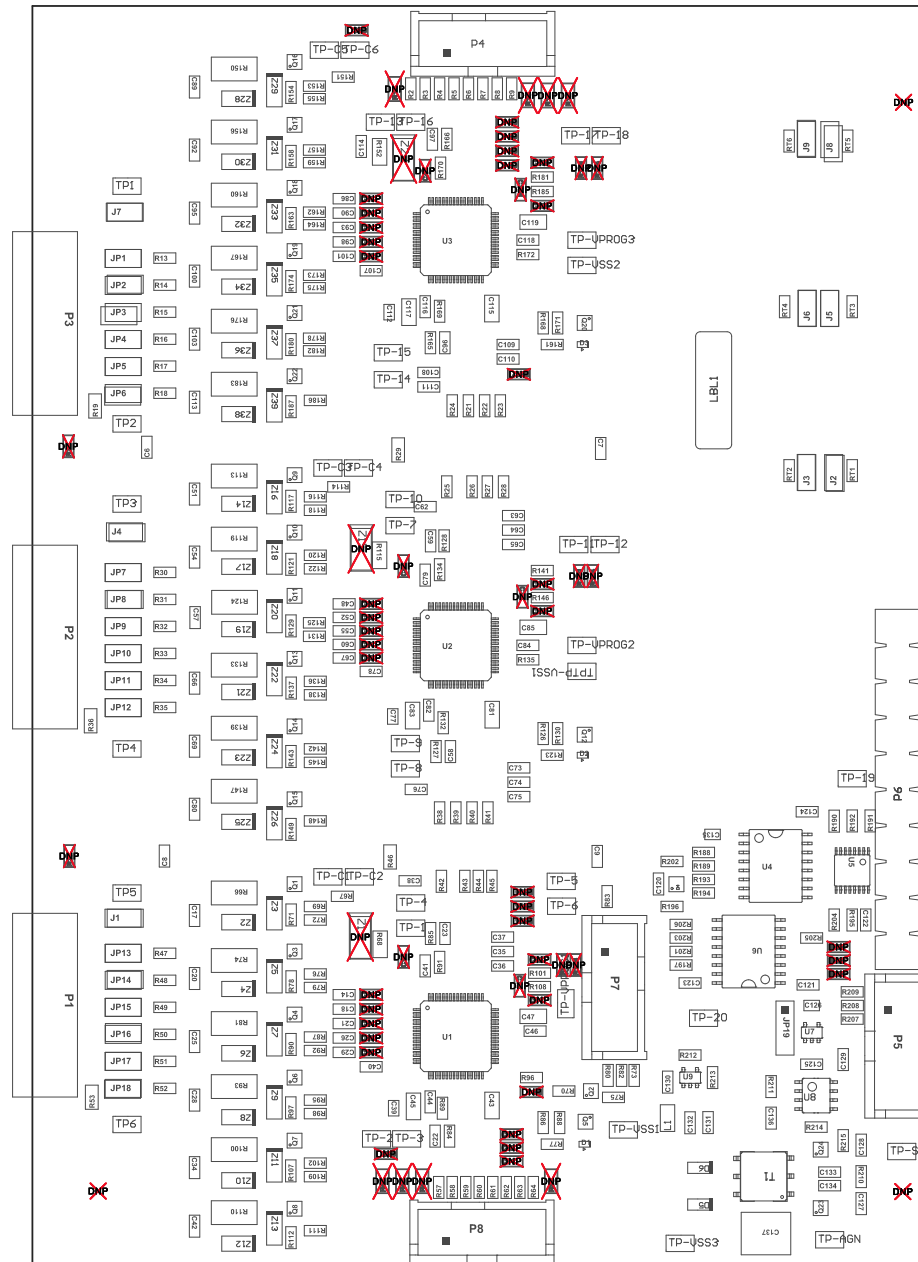
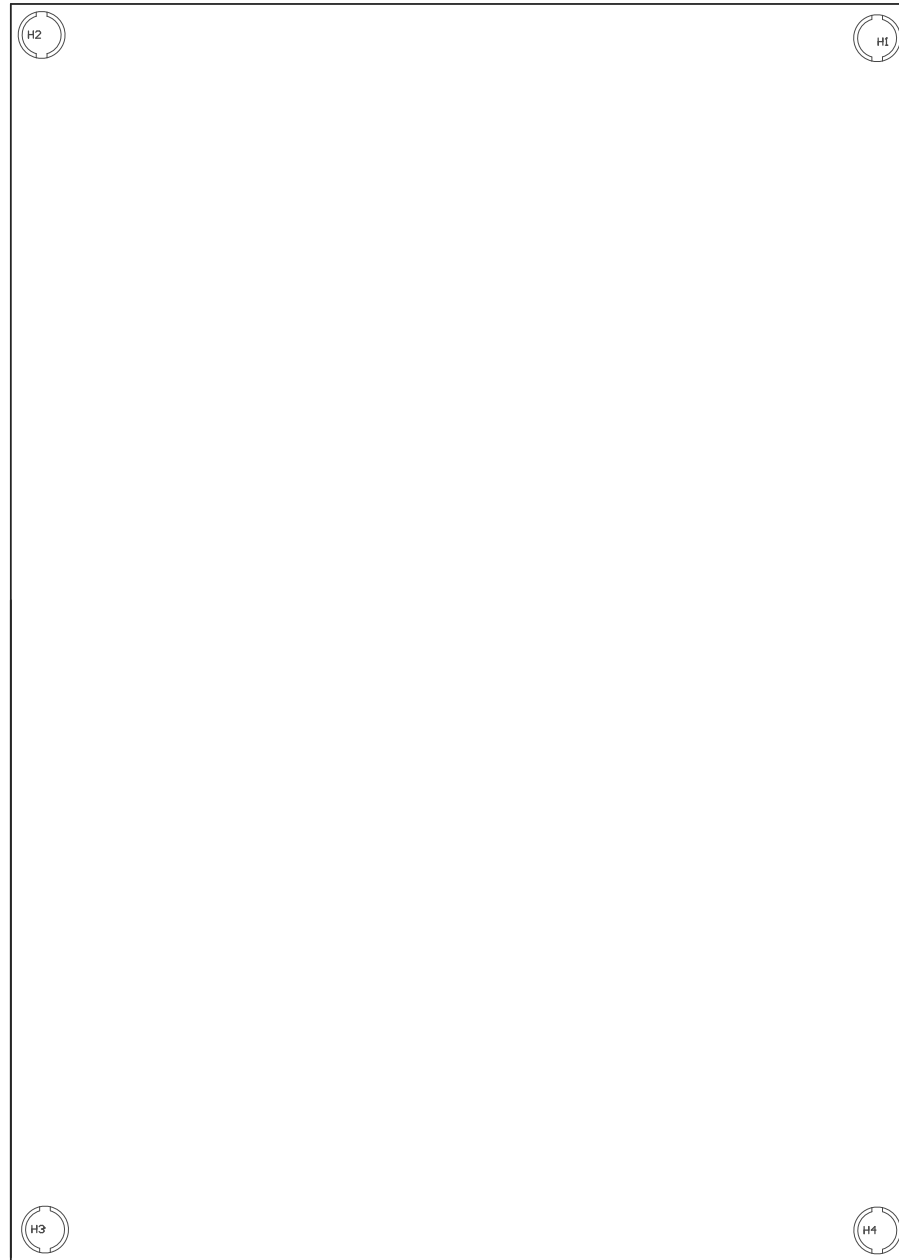


Z21 ■ Install label in silkscreened box after final wash. Text shall be 8 pt font. Text shall be per the Label Table in the PDF schematic.
Z22 ■ These assemblies are ESD sensitive, ESD precautions shall be observed.
Z23 ■ These assemblies must be clean and free from flux and all contaminants. Use of no clean flux is not acceptable.
Z24 ■ These assemblies must comply with workmanship standards IPC-A-610 Class 2, unless otherwise specified.
Z25 ■ Please place P9- Terminal; P10- Terminal; P11- Terminal; to P1; P2; P3



COMPONENTS MARKED 'DNP' SHOULD NOT BE POPULATED.
ASSEMBLY VARIANT: 001

PCB VIEWED FROM TOP SIDE	BOARD #: PWR763	REV: A	SUN REV: Not In VersionControl
	TID #: TID		
PLOT NAME = Top Assembly Drawing	GENERATED : 10/21/2015 8:25:44 AM	TEXAS INSTRUMENTS	



COMPONENTS MARKED 'DNP' SHOULD NOT BE POPULATED.
ASSEMBLY VARIANT: 001

PCB VIEWED FROM BOTTOM SIDE	BOARD #: PWR763	REV: A	SUN REV: Not In VersionControl
	TID #: PWR763		
PLOT NAME = Bottom Assembly Drawing	GENERATED : 10/21/2015 8:25:45 AM		TEXAS INSTRUMENTS