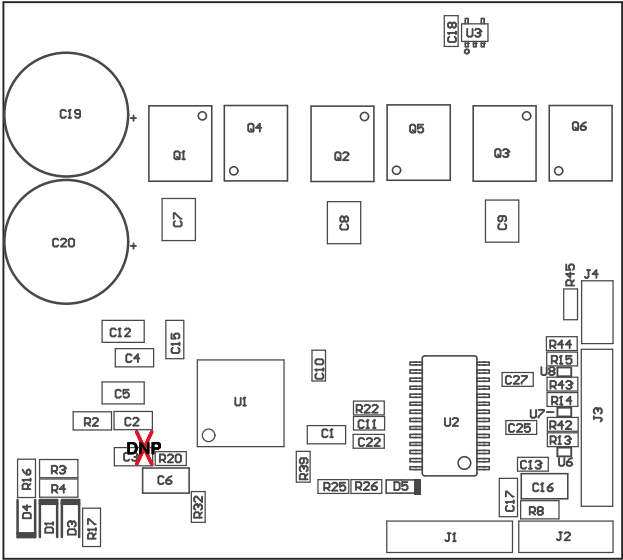


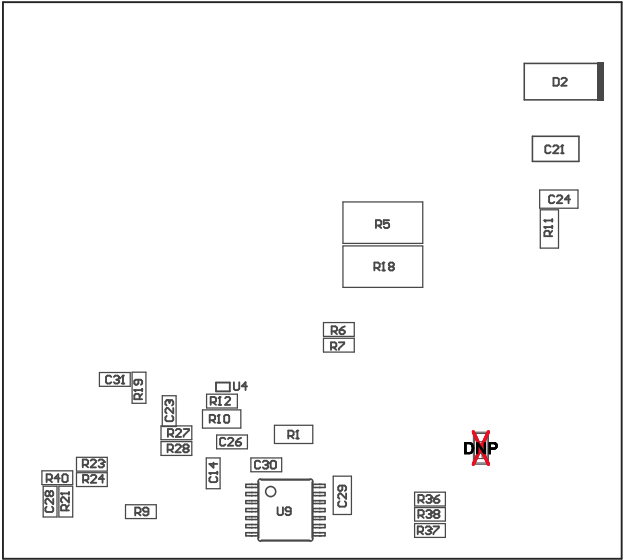
- ZZ1 ■ Install label in silkscreened box after final wash. Text shall be 8 pt font. Text shall be per the Label Table in the PDF schematic.
- ZZ2 ■ These assemblies are ESD sensitive, ESD precautions shall be observed.
- ZZ3 ■ These assemblies must be clean and free from flux and all contaminants. Use of no clean flux is not acceptable.
- These assemblies must comply with workmanship standards IPC-A-610 Class 2, unless otherwise specified.



COMPONENTS MARKED 'DNP' SHOULD NOT BE POPULATED.

ASSEMBLY VARIANT: 001

ALL ARTWORK VIEWED FROM TOP SIDE	BOARD #: TIDA-00771	REV: E2	SUN REV: Not In VersionControl
LAYER NAME = M5 Assembly Top	TIDA-00771		
Top Assembly Drawing	GENERATED : 3/24/2016 3:32:59 PM	TEXAS INSTRUMENTS	



COMPONENTS MARKED 'DNP' SHOULD NOT BE POPULATED.

ASSEMBLY VARIANT: 001

PCB VIEWED FROM BOTTOM SIDE	BOARD #:	TIDA-00771	REV:	E2	SUN REV:
LAYER NAME = M6 Assembly Bottom	TIDA-00771				
PLOT NAME = Bottom Assembly Drawing	GENERATED :	3/24/2016	3:33:00 PM		