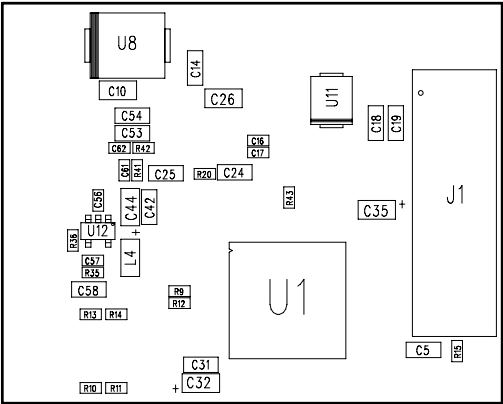


Notes:

- 1) Refer to BOM for stuffing options.  
2) Observe polarity on diodes and capacitors.

REVISIONS				
REV.	REV.	DESCRIPTION	DATE	APPROVED



SECONDARY SIDE

TIDC-HYBRID-WMBUS-PLC

APPLICATION		CONTRACT NO.	DWN:	www.WSTScorp.com	3/14	Texas Instruments, Inc.				
USED ON	NEXT ASSY.		CHK:							
		UNLESS OTHERWISE SPECIFIED  1. TOLERANCES: LINEAR =     : 0.26 (.010) ANGULAR =    : 0.50 °  2. ALL DIMENSIONS ARE IN MM (INCHES).  3. INTERPRET DRAWING IN ACCORDANCE WITH DOD-STD-100.	P.E.:			TITLE:  ASSEMBLY DRAWING,  SOMPLC-F28PLC84				
			DES.ENG.:							
			P.C.:							
			Q.C.:							
			C.M.:							
MATERIAL: SEE NOTE FINISH: SEE NOTE  DO NOT SCALE DRAWING			REL:			SIZE	CAGE CODE NO.	DRAWING NO.	REV:	
				MFG:						
				ENG.MGR:			C		SOMPLC-F28PLC84	1
				OTHER:			SCALE: 1:1		SHEET 2 OF 2	
				OTHER:						