

1		2		3		4		5		6			
A		<div>Cannot open file C:\Users\{a0226579}\Desktop\Documentation Files\TIDA-01051 Block Diagram.png</div>										Revision History	
		Rev	ECN #	Approved Date	Approved by	Notes							
		N/A	N/A	N/A	N/A	N/A							
B													
C													
D													
1		2		3		4		5		6			

Orderable: N/A

TID #: 01055

Number: TIDA-01055

SVN Rev: Version control disabled

Drawn By:

Engineer: Taras Dudar & Eric Beljaars

Designed for: Public Release

Project Title: OPA625 ADC Driver

Rev: E1

Assembly Variant: 001

File: OPA625 ADC Driver\_CoverSheet.SchDoc

Contact: http://www.ti.com/support

Mod. Date: 1/11/2017

Sheet: 1 of 8

Size: B

 TEXAS  
INSTRUMENTS

http://www.ti.com

© Texas Instruments 2017

Texas Instruments and/or its licensors do not warrant the accuracy or completeness of this specification or any information contained therein. Texas Instruments and/or its licensors do not warrant that this design will meet the specifications, will be suitable for your application or fit for any particular purpose, or will operate in an implementation. Texas Instruments and/or its licensors do not warrant that the design is production worthy. You should completely validate and test your design implementation to confirm the system functionality for your application.

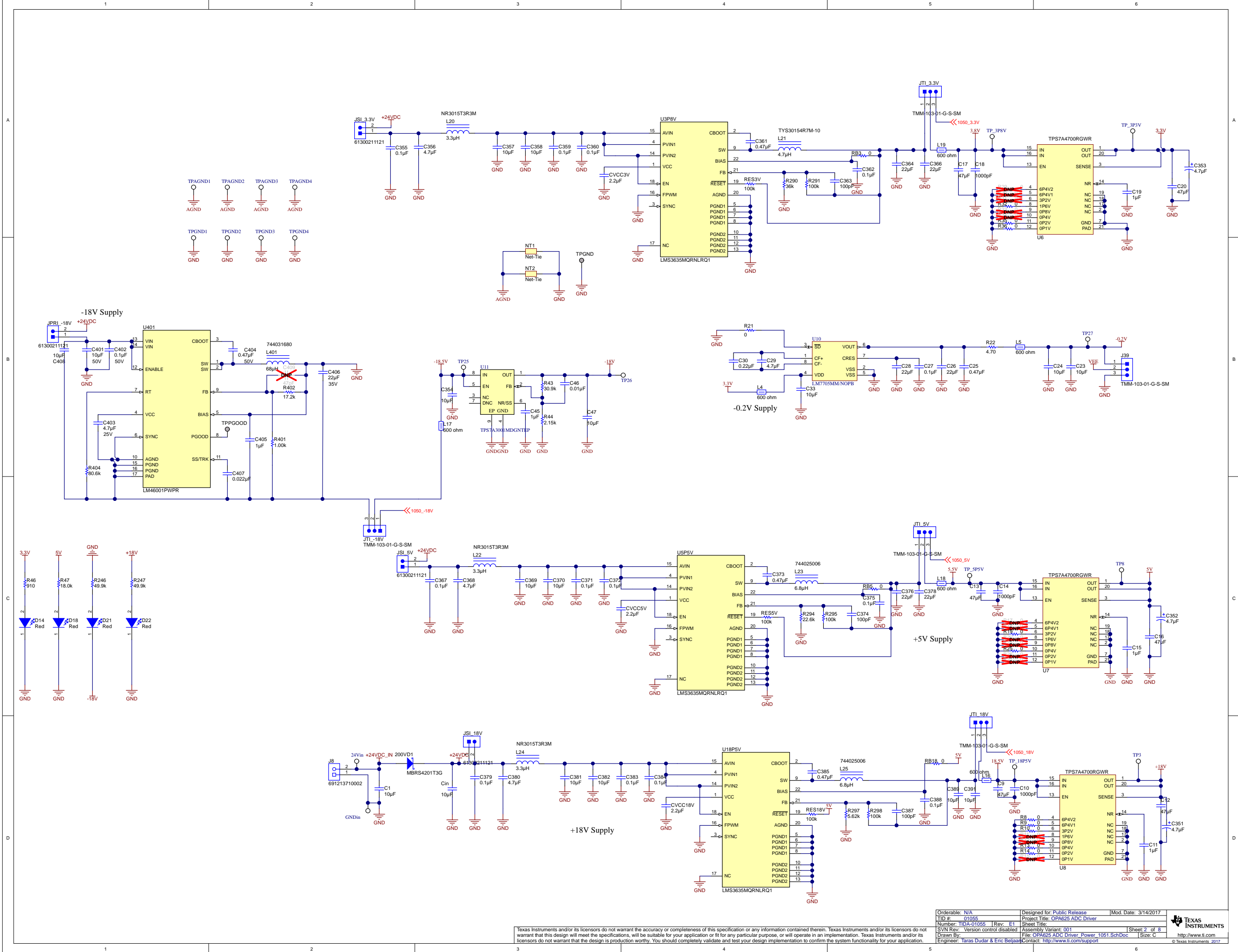
Revision History				
Rev	ECN #	Approved Date	Approved by	Notes
N/A	N/A	N/A	N/A	N/A

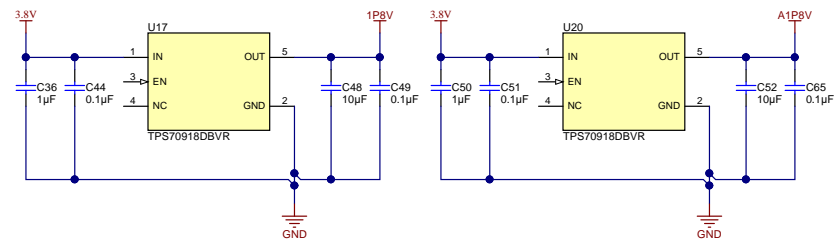
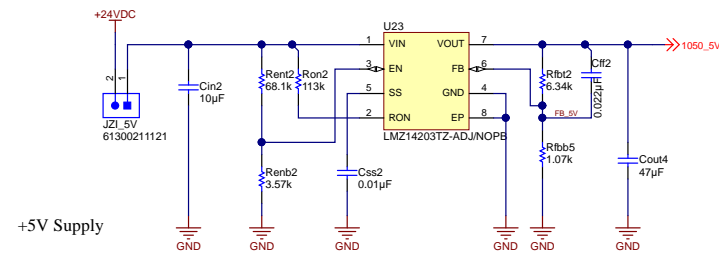
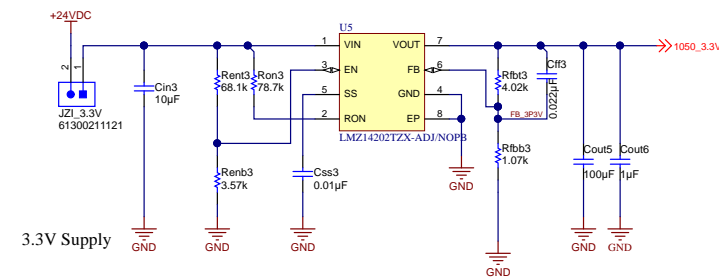
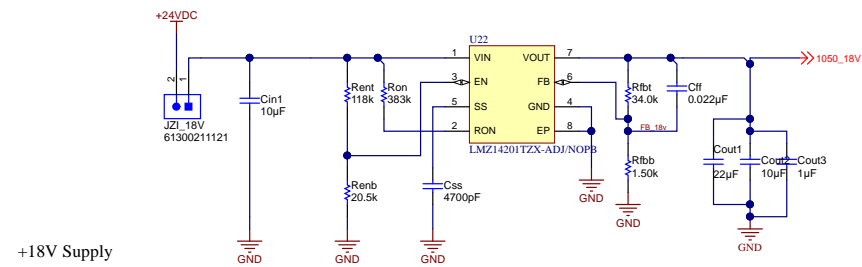
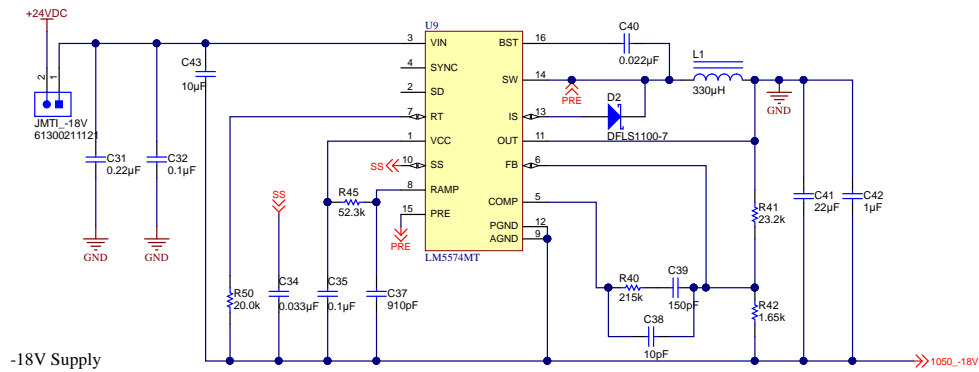
Texas Instruments and/or its licensors do not warrant the accuracy or completeness of this specification or any information contained therein. Texas Instruments and/or its licensors do not warrant that this design will meet the specifications, will be suitable for your application or fit for any particular purpose, or will operate in an implementation. Texas Instruments and/or its licensors do not warrant that the design is production worthy. You should completely validate and test your design implementation to confirm the system functionality for your application.

Orderable: N/A		Designed for: Public Release	Mod. Date: 1/11/2017
TID #: 01055		Project Title: OPA625 ADC Driver	
Number: TIDA-01055	Rev: E1	Sheet Title:	
SVN Rev: Version control disabled	Assembly Variant: 001		Sheet: 1 of 8
Drawn By:	File: OPA625 ADC Driver_CoverSheet.SchDoc		Size: B
Engineer: Taras Dudar & Eric Beljaars		Contact: http://www.ti.com/support	

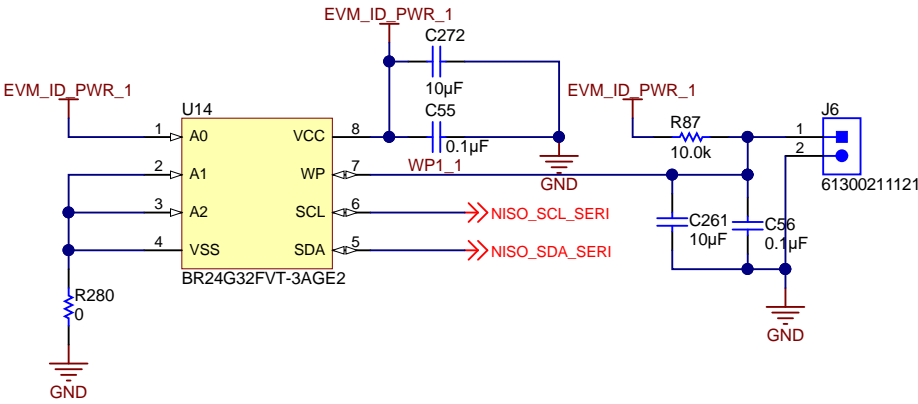
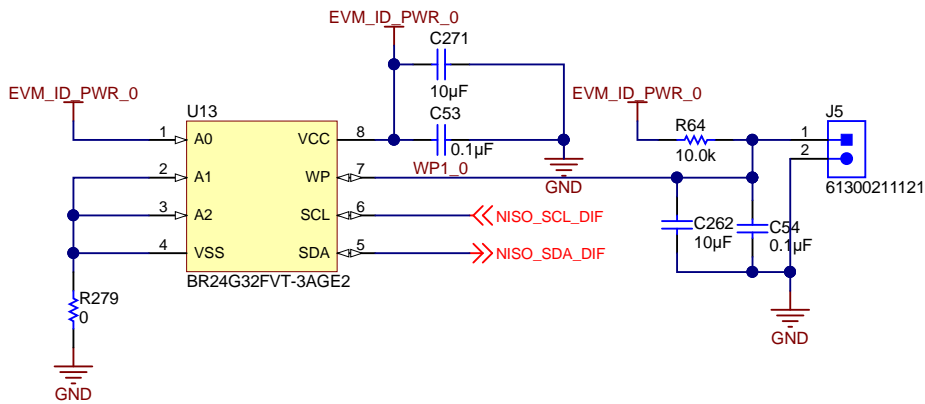
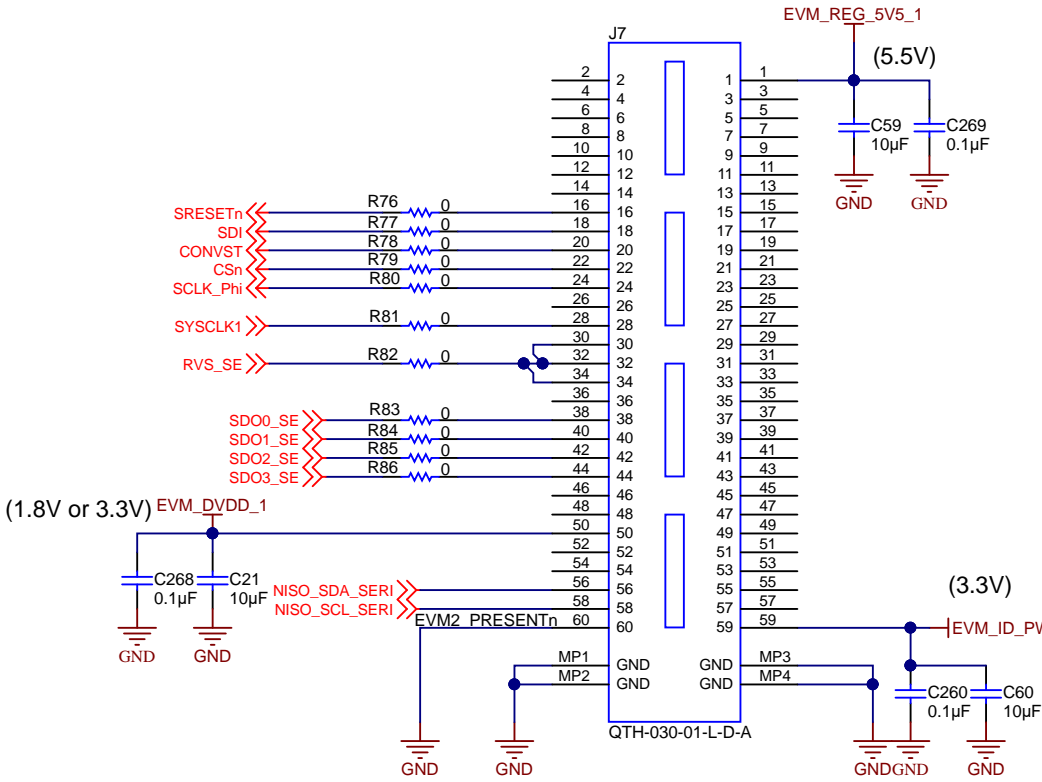
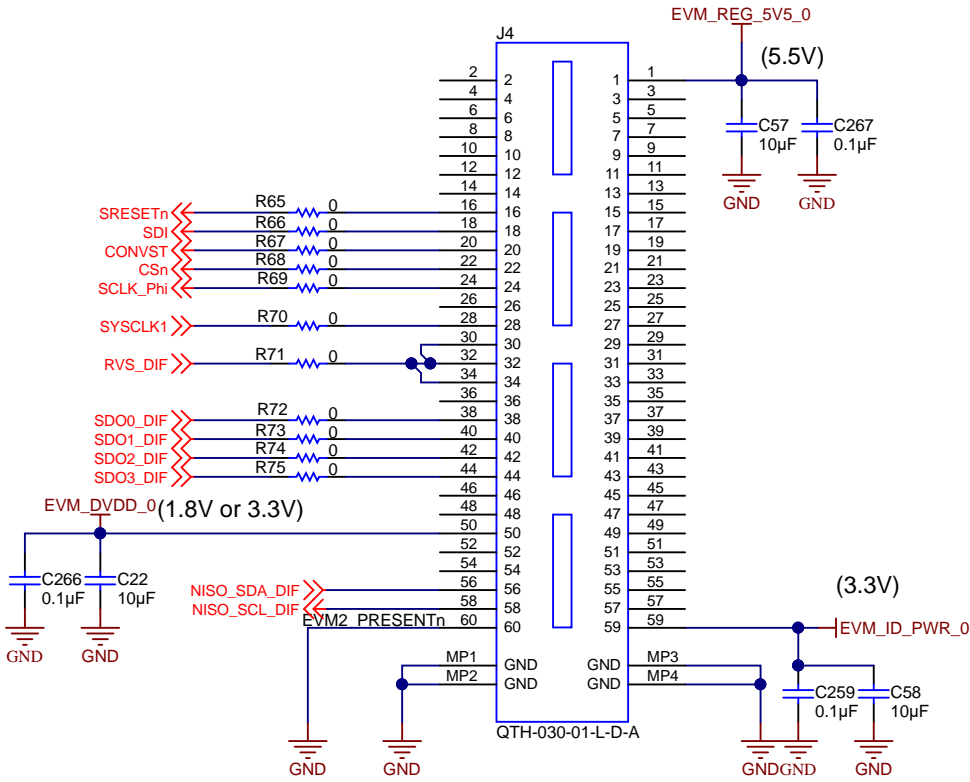
 **TEXAS  
INSTRUMENTS**

<http://www.ti.com>  
© Texas Instruments 2017



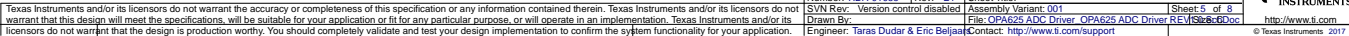


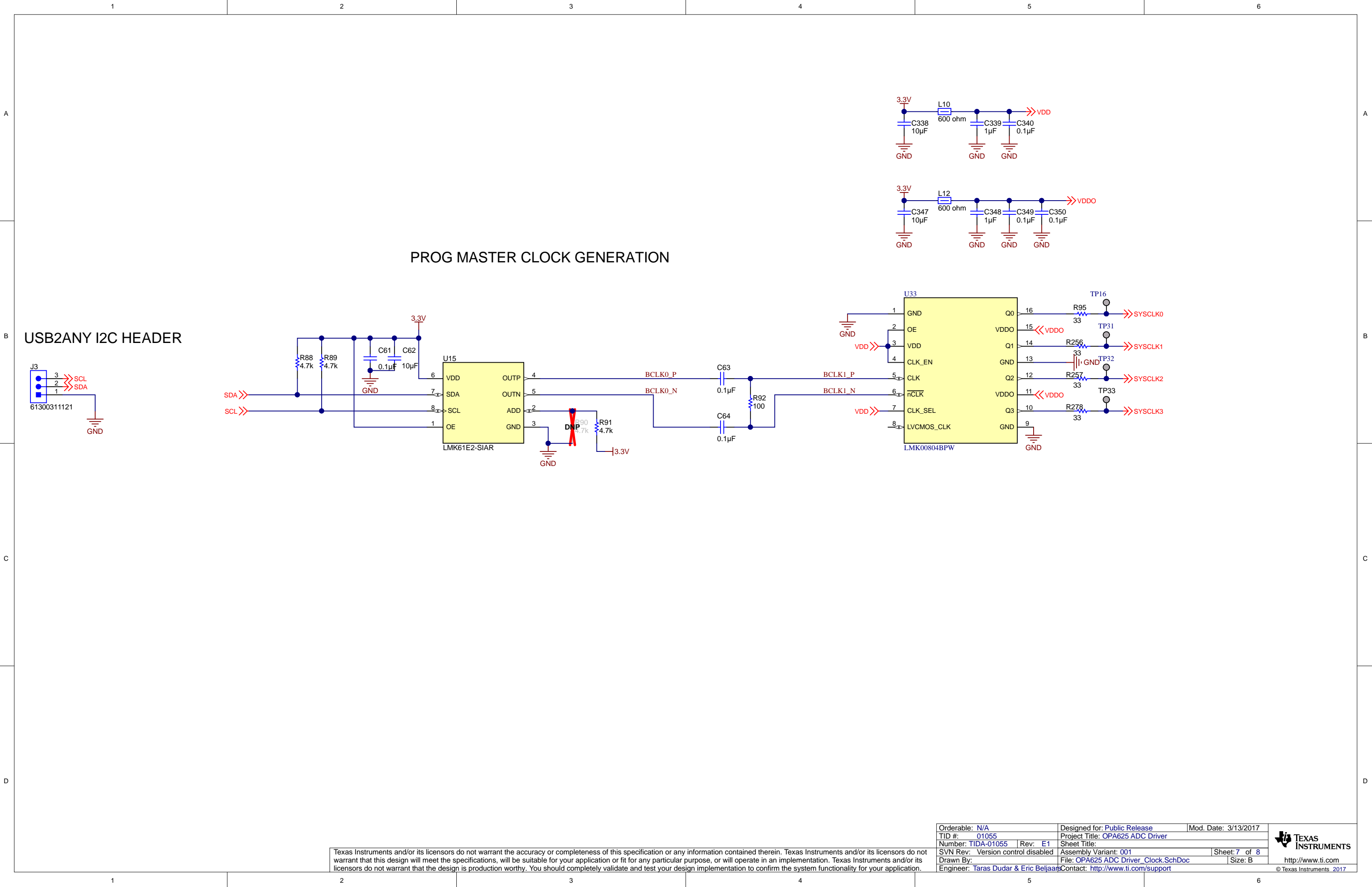
PHI PLATFORM  
INTERFACE



Texas Instruments and/or its licensors do not warrant the accuracy or completeness of this specification or any information contained therein. Texas Instruments and/or its licensors do not warrant that this design will meet the specifications, will be suitable for your application or fit for any particular purpose, or will operate in an implementation. Texas Instruments and/or its licensors do not warrant that the design is production worthy. You should completely validate and test your design implementation to confirm the system functionality for your application.

Orderable: N/A	Designed for: Public Release	Mod. Date: 2/28/2017
TID #: 01055	Project Title: OPA625 ADC Driver	
Number: TIDA-01055	Rev: E1	Sheet Title:
SVN Rev: Version control disabled	Assembly Variant: 001	Sheet: 3 of 8
Drawn By:	File: OPA625 ADC Driver_Connectors.SchDoc	Size: B
Engineer: Taras Dudar & Eric Beljaars	Contact: http://www.ti.com/support	





Texas Instruments and/or its licensors do not warrant the accuracy or completeness of this specification or any information contained therein. Texas Instruments and/or its licensors do not warrant that this design will meet the specifications, will be suitable for your application or fit for any particular purpose, or will operate in an implementation. Texas Instruments and/or its licensors do not warrant that the design is production worthy. You should completely validate and test your design implementation to confirm the system functionality for your application.

Orderable: N/A		Designed for: Public Release	Mod. Date: 3/13/2017
TID #: 01055		Project Title: OPA625 ADC Driver	
Number: TIDA-01055	Rev: E1	Sheet Title:	
SVN Rev: Version control disabled		Assembly Variant: 001	Sheet: 7 of 8
Drawn By:		File: OPA625 ADC Driver_Clock.SchDoc	Size: B
Engineer: Taras Dudar & Eric Beljaars		Contact: http://www.ti.com/support	

