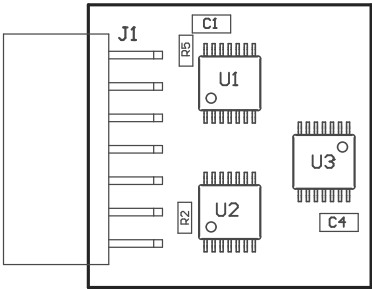


ZZ1 ■Install label in silkscreened box after final wash. Text shall be 8 pt font. Text shall be per the Label Table in the PDF schematic.

ZZ2 ■These assemblies are ESD sensitive, ESD precautions shall be observed.

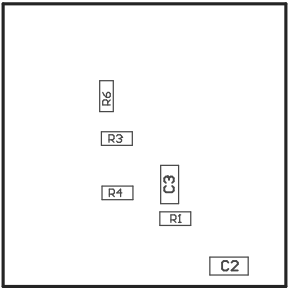
ZZ3 ■These assemblies must be clean and free from flux and all contaminants. Use of no clean flux is not acceptable.

ZZ4 ■These assemblies must comply with workmanship standards IPC-A-610 Class 2, unless otherwise specified.



COMPONENTS MARKED 'DNP' SHOULD NOT BE POPULATED.
ASSEMBLY VARIANT: 001

PCB VIEWED FROM TOP SIDE	BOARD #: TIDA-01349	REV: E1	SUN REV: Not In VersionControl
M5 Assembly Top	TID #: 01349		
PLOT NAME = Top Assembly Drawing	GENERATED : 12/19/2017 1:12:22 PM		TEXAS INSTRUMENTS



COMPONENTS MARKED 'DNP' SHOULD NOT BE POPULATED.
ASSEMBLY VARIANT: 001

PCB VIEWED FROM BOTTOM SIDE	BOARD #: TIDA-01349	REV: E1	SUN REV: Not In VersionControl
	TID #: 01349	mottoB yldm922A dM	
PLOT NAME = Bottom Assembly Drawing	GENERATED : 12/19/2017 1:12:23 PM		TEXAS INSTRUMENTS