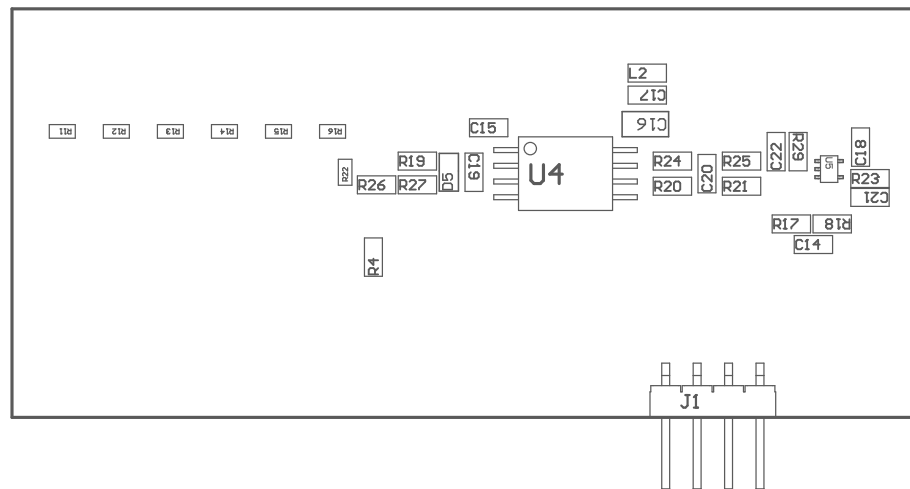


Z24 ■ These assemblies must comply with workmanship standards IPC-A-610 Class 2, unless otherwise specified.



PCB VIEWED FROM TOP SIDE	BOARD #: TIDA-01606_HV_Rev E4	SUN REV: Not in version control
	TID #: TIDA-01606	
PLOT NAME = Top Assembly Drawing	GENERATED : 11/29/2022 10:44:37 AM	TEXAS INSTRUMENTS



COMPONENTS MARKED 'DNP' SHOULD NOT BE POPULATED.
 ASSEMBLY VARIANT: 001

PCB VIEWED FROM BOTTOM SIDE	BOARD #: TIDA-01606_HV_CSP E4	SUN REV: Not in version control
	TID #: TIDA-01606	
PLOT NAME = Bottom Assembly Drawing	GENERATED : 11/29/2022 10:44:39 AM	TEXAS INSTRUMENTS