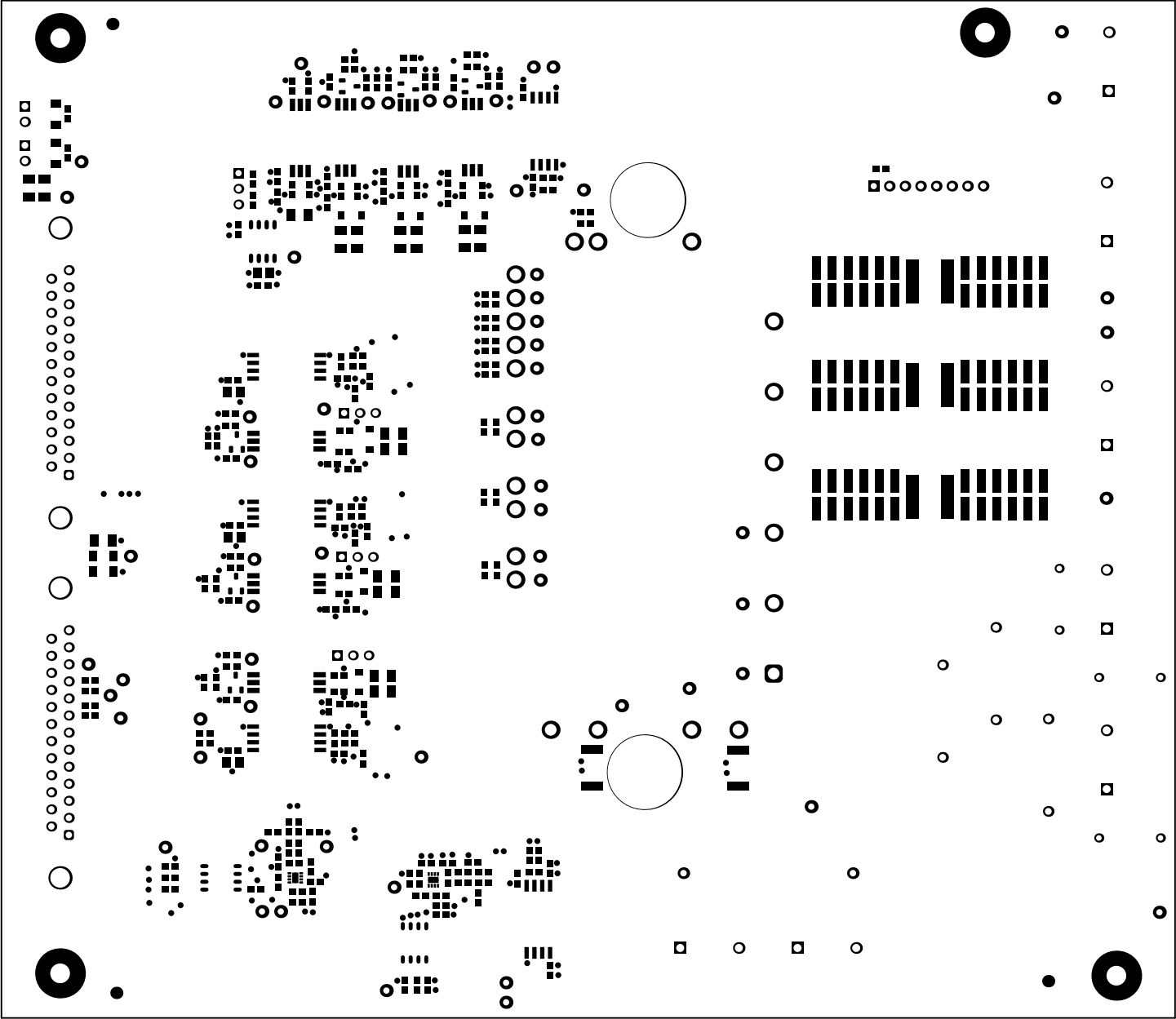
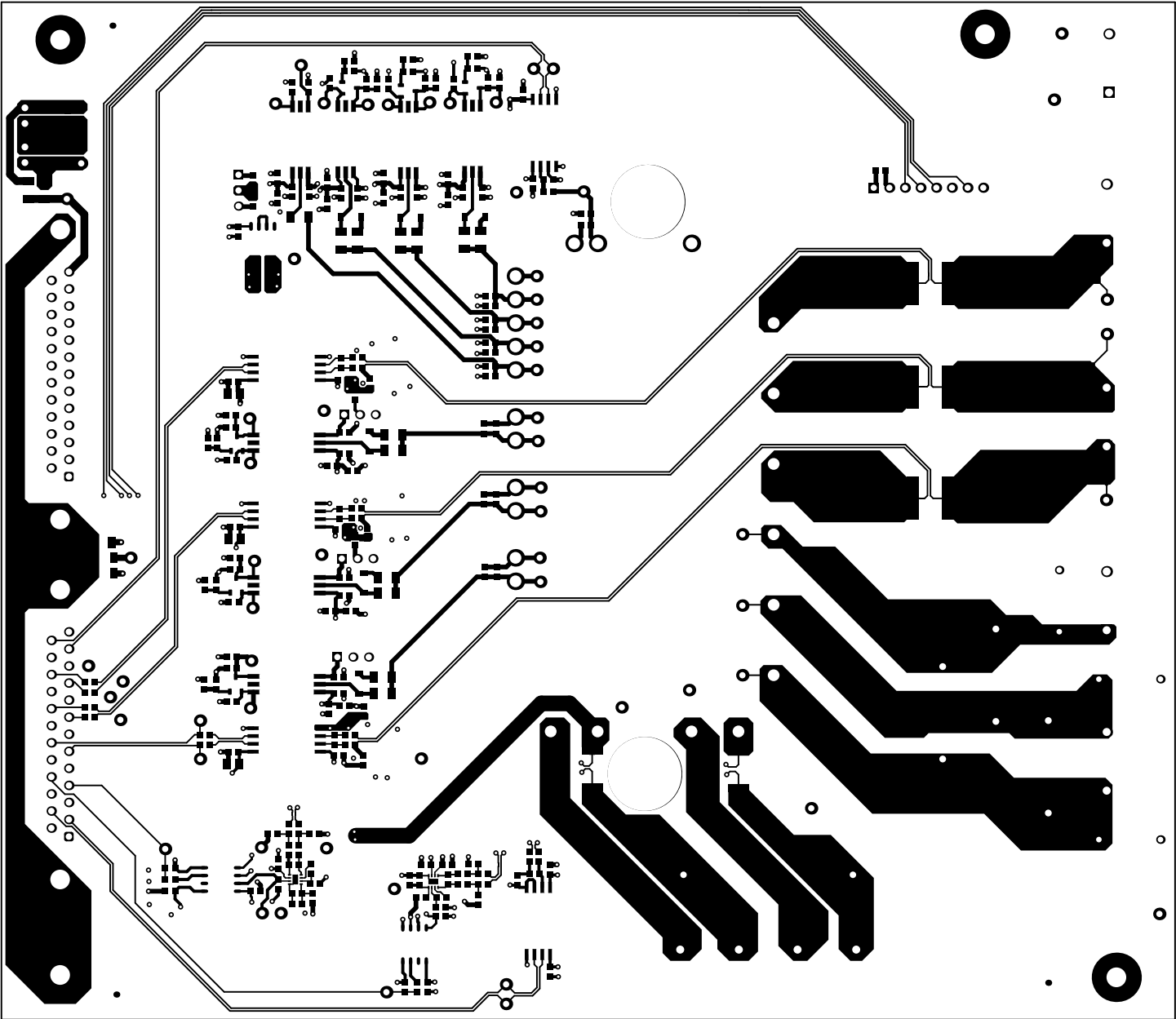


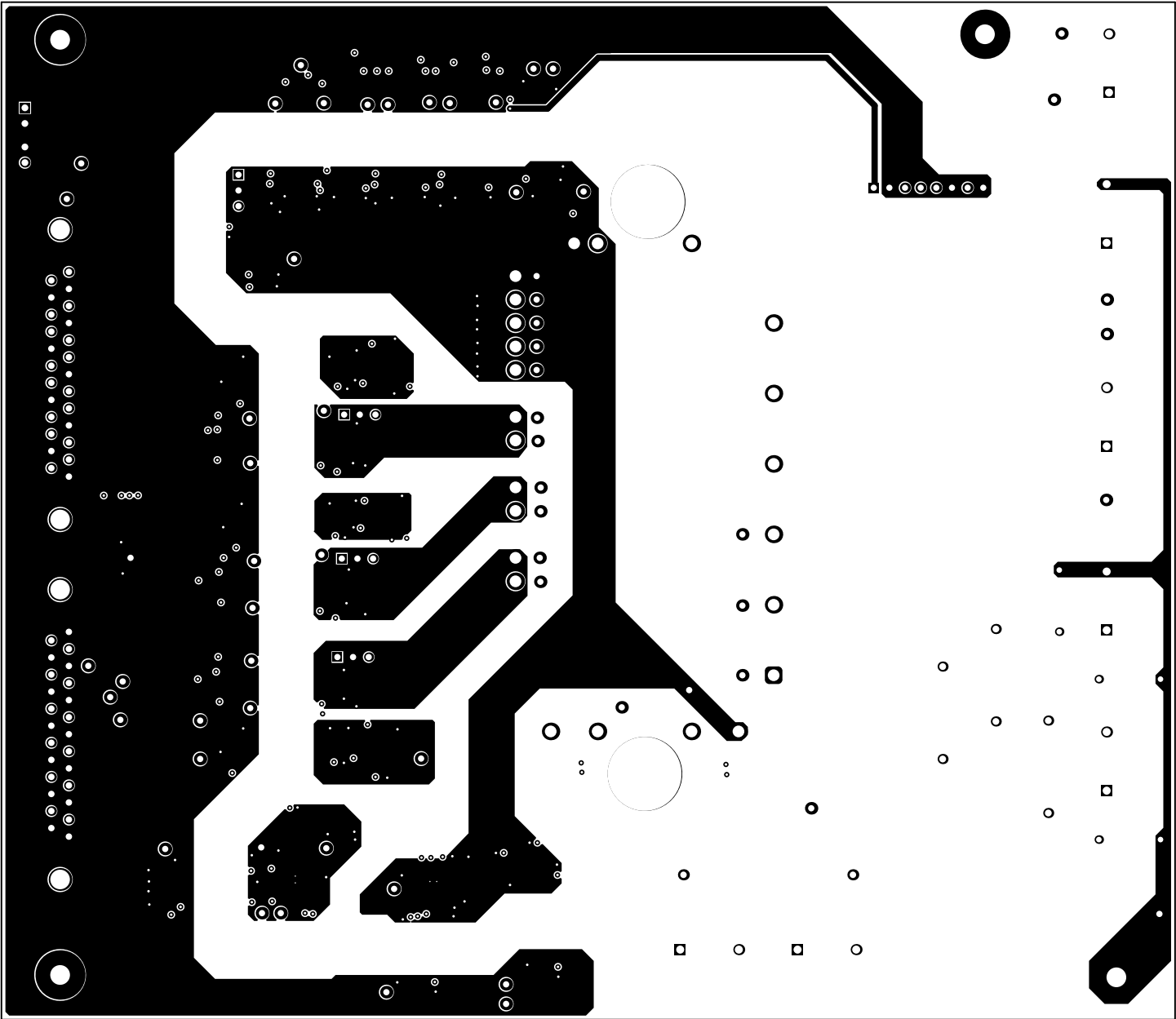
ALL ARTWORK VIEWED FROM TOP SIDE	BOARD #: 010025	REV: E1	SUN REV: Not In VersionControl
LAYER NAME = Top Overlay	TID #: TIDA-010025		
PLOT NAME = Top Overlay	GENERATED : 10/10/2018 12:11:02 PM	TEXAS INSTRUMENTS	



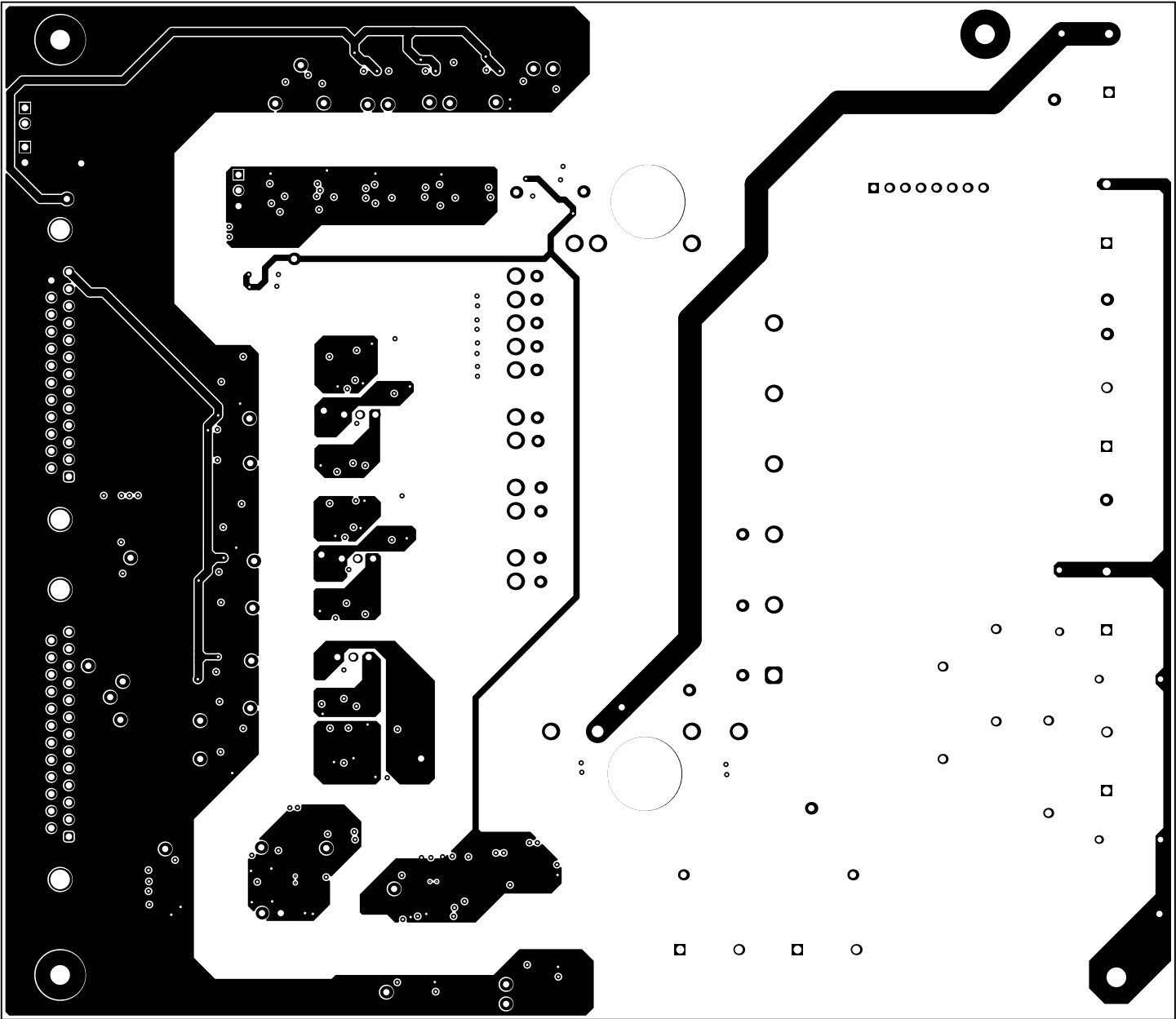
ALL ARTWORK VIEWED FROM TOP SIDE	BOARD #: 010025	REV: E1	SUN REV: Not In VersionControl
LAYER NAME = Top Solder	TID #: TIDA-010025		
PLOT NAME = Top Solder Mask	GENERATED : 10/10/2018 12:11:02 PM	TEXAS INSTRUMENTS	



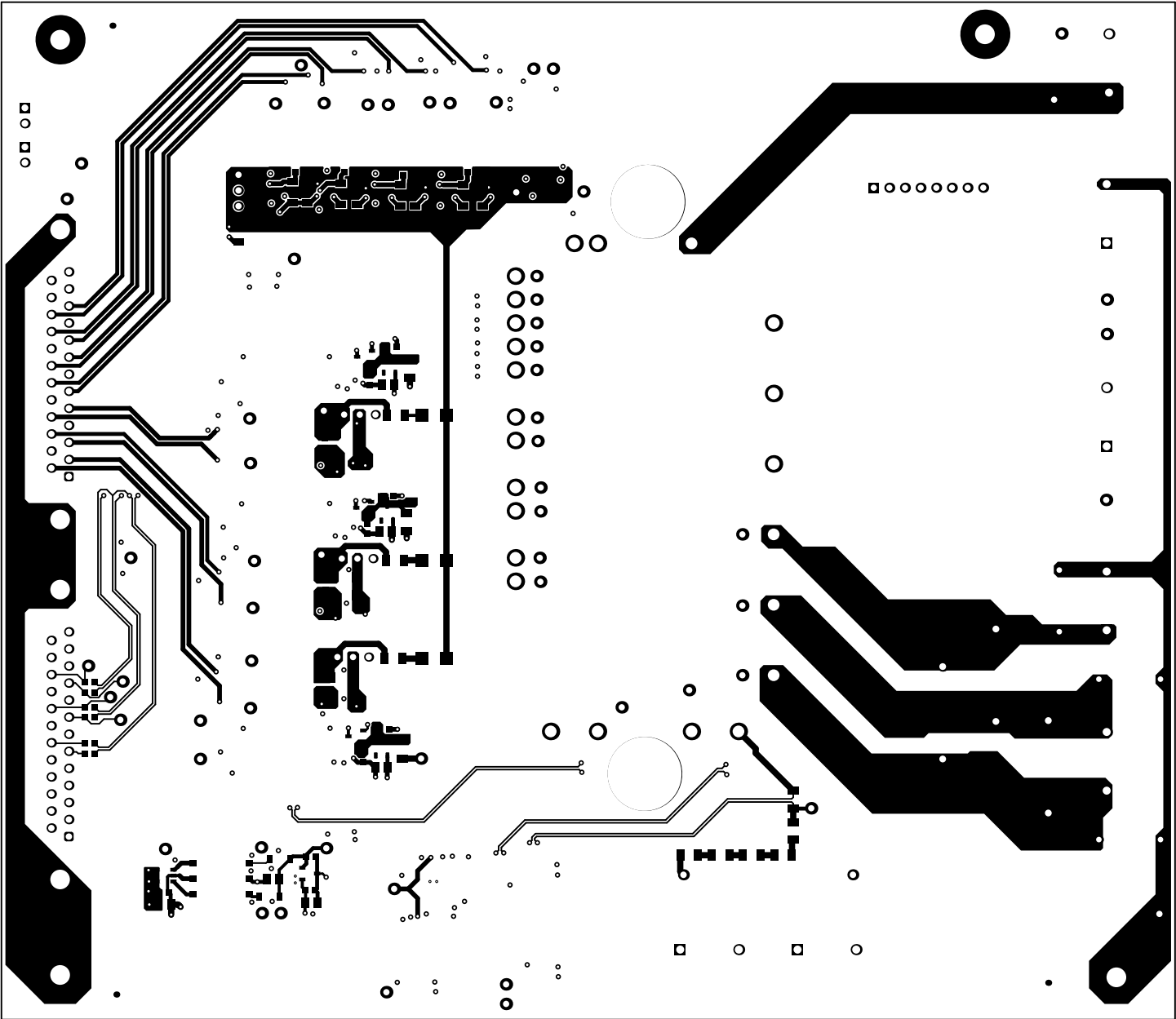
ALL ARTWORK VIEWED FROM TOP SIDE	BOARD #: 010025	REV: E1	SUN REV: Not In VersionControl
LAYER NAME = Top Layer	TID #: TIDA-010025		
PLOT NAME = Top Layer	GENERATED : 10/10/2018 12:11:03 PM	TEXAS INSTRUMENTS	



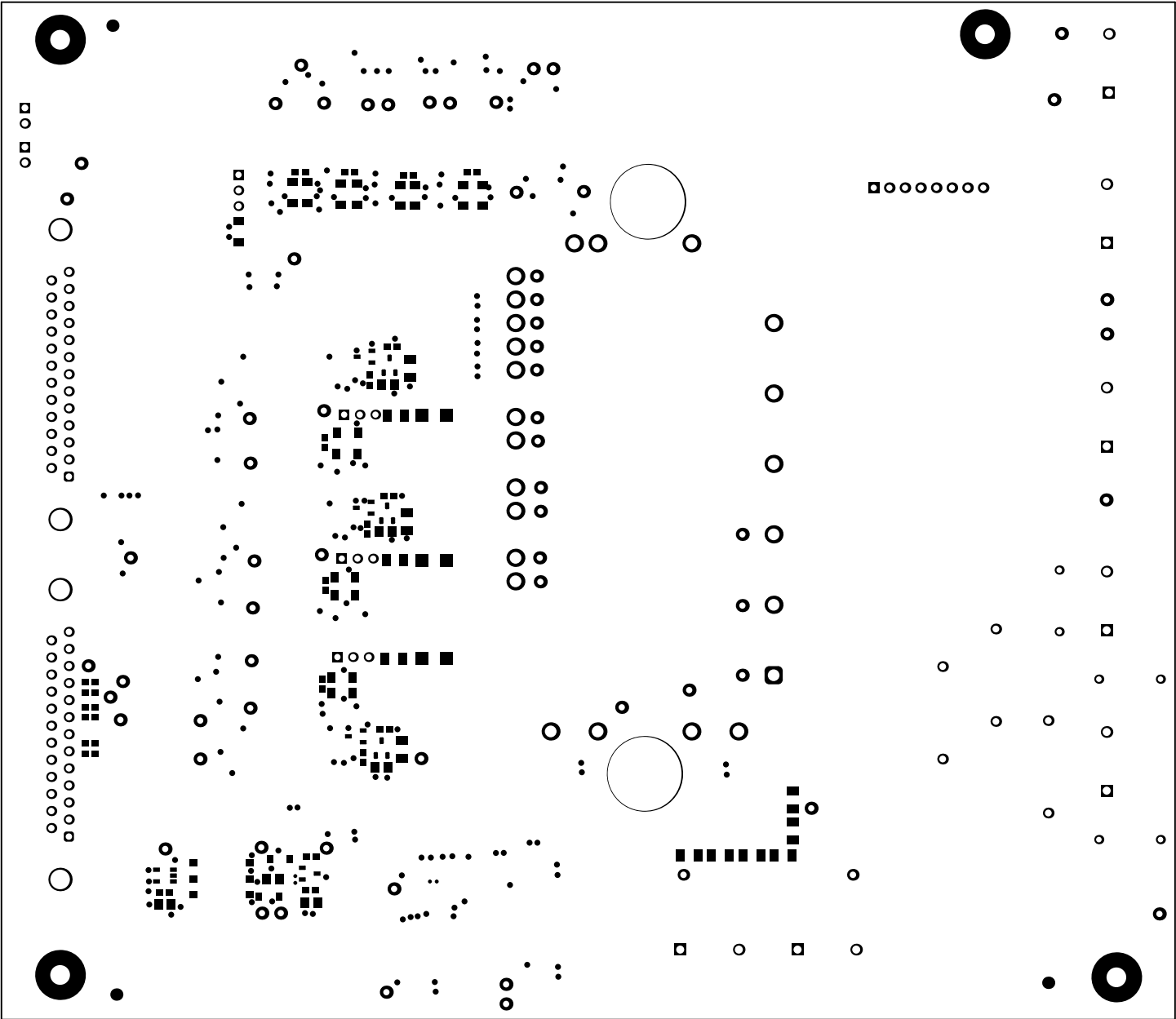
ALL ARTWORK VIEWED FROM TOP SIDE	BOARD #: 010025	REV: E1	SUN REV: Not In VersionControl
LAYER NAME = GND	TID #: TIDA-010025		
PLOT NAME = Signal Layer 1	GENERATED : 10/10/2018 12:11:04 PM		TEXAS INSTRUMENTS



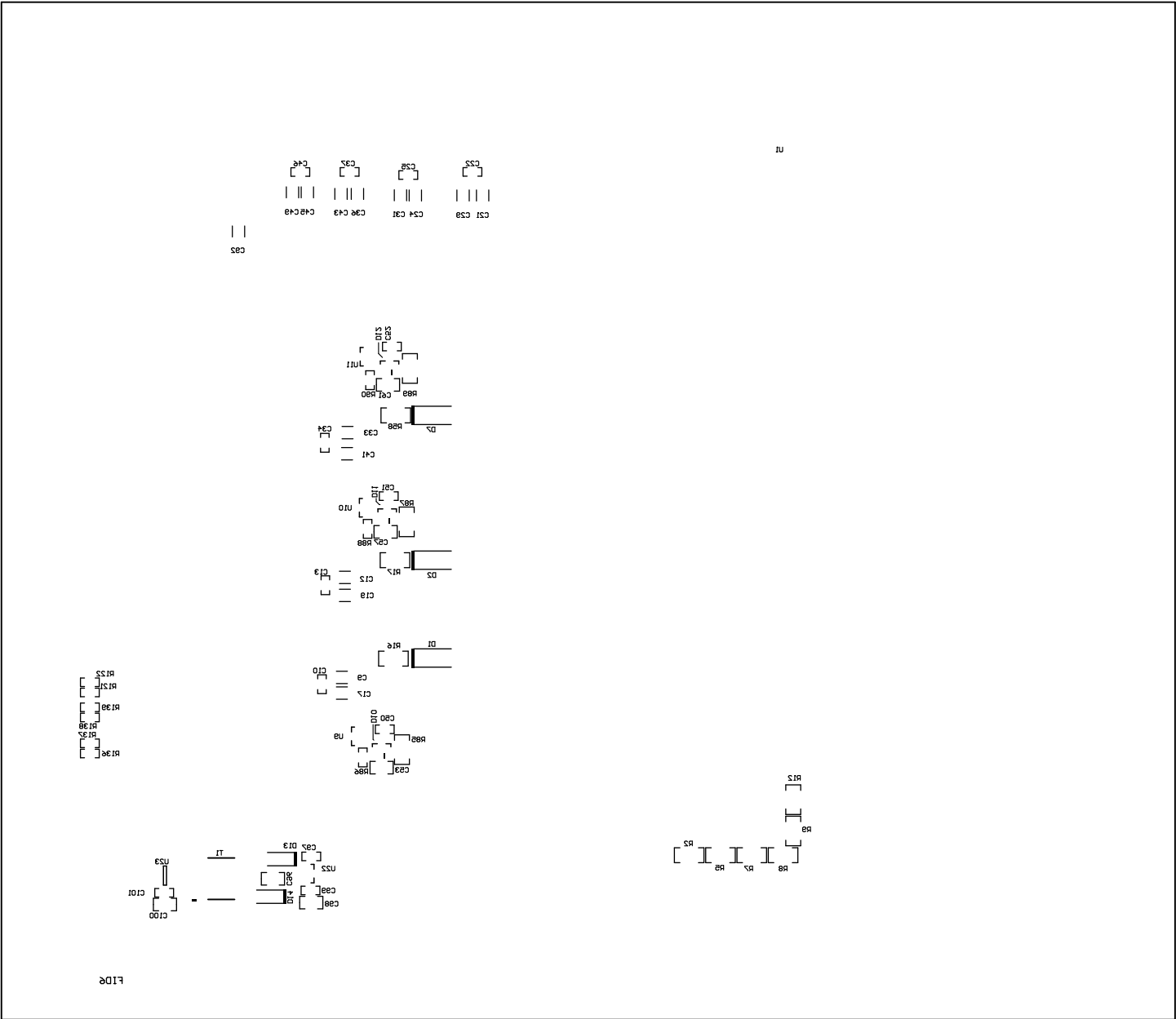
ALL ARTWORK VIEWED FROM TOP SIDE	BOARD #: 010025	REV: E1	SUN REV: Not In VersionControl
LAYER NAME = PWR	TID #: TIDA-010025		
PLOT NAME = Signal Layer 2	GENERATED : 10/10/2018 12:11:05 PM	TEXAS INSTRUMENTS	



ALL ARTWORK VIEWED FROM TOP SIDE	BOARD #: 010025	REV: E1	SUN REV: Not In VersionControl
LAYER NAME = Bottom Layer	TID #: TIDA-010025		
PLOT NAME = Bottom Layer	GENERATED : 10/10/2018 12:11:05 PM	TEXAS INSTRUMENTS	

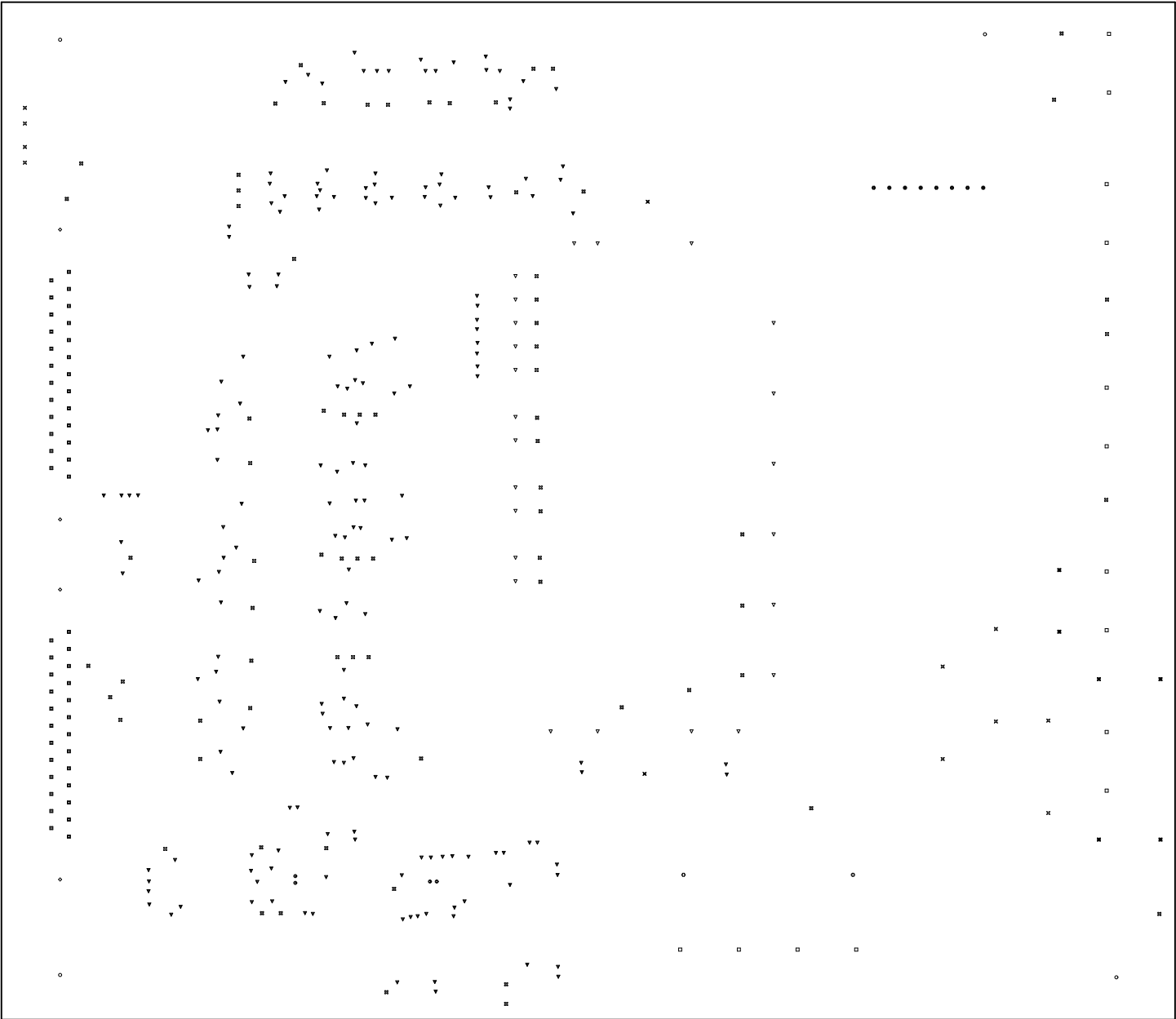


ALL ARTWORK VIEWED FROM TOP SIDE	BOARD #: 010025	REV: E1	SUN REV: Not In VersionControl
LAYER NAME = Bottom Solder	TID #: TIDA-010025		
PLOT NAME = Bottom Solder Mask	GENERATED : 10/10/2018 12:11:06 PM	TEXAS INSTRUMENTS	



ALL ARTWORK VIEWED FROM TOP SIDE	BOARD #: 010025	REV: E1	SUN REV: Not In VersionControl
LAYER NAME = Bottom Overlay	TID #: TIDA-010025		
PLOT NAME = Bottom Overlay	GENERATED : 10/10/2018 12:11:07 PM	TEXAS INSTRUMENTS	

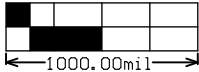
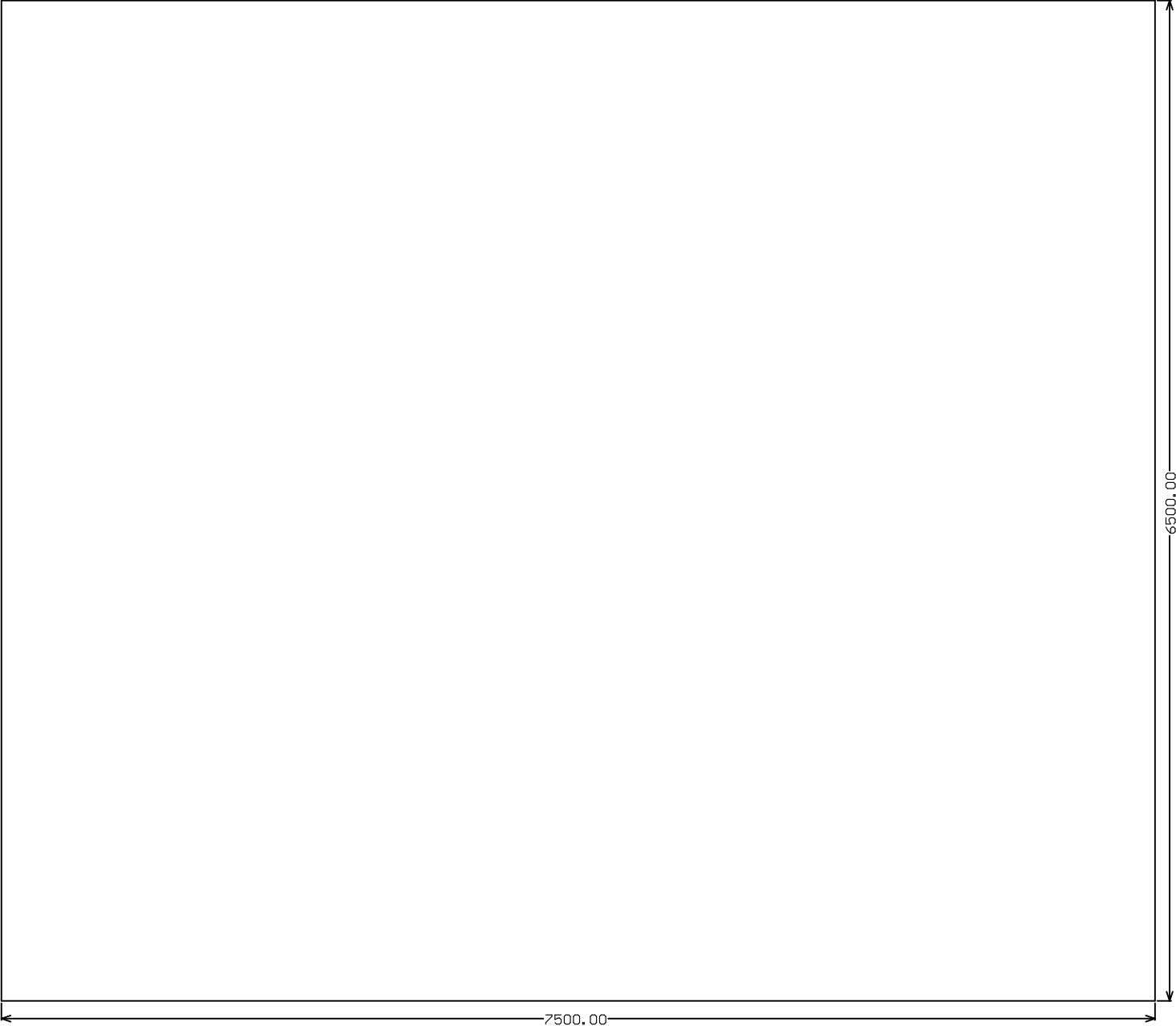




Symbol	Quantity	Finished Hole Size	Plated	Hole Type	Drill Layer Pair	Hole Tolerance
✕	2	472.44mil (12.000mm)	NPTH	Round	Top Layer - Bottom Layer	
○	4	7.87mil (0.200mm)	PTH	Round	Top Layer - Bottom Layer	
▽	185	16.00mil (0.406mm)	PTH	Round	Top Layer - Bottom Layer	
✕	6	35.43mil (0.900mm)	PTH	Round	Top Layer - Bottom Layer	
⊕	8	39.37mil (1.000mm)	PTH	Round	Top Layer - Bottom Layer	
⊗	75	40.00mil (1.016mm)	PTH	Round	Top Layer - Bottom Layer	
□	50	41.00mil (1.041mm)	PTH	Round	Top Layer - Bottom Layer	
⊕	2	41.34mil (1.050mm)	PTH	Round	Top Layer - Bottom Layer	
✕	10	43.31mil (1.100mm)	PTH	Round	Top Layer - Bottom Layer	
□	14	51.18mil (1.300mm)	PTH	Round	Top Layer - Bottom Layer	
▽	24	74.80mil (1.900mm)	PTH	Round	Top Layer - Bottom Layer	
◇	4	125.00mil (3.175mm)	PTH	Round	Top Layer - Bottom Layer	
○	4	125.98mil (3.200mm)	PTH	Round	Top Layer - Bottom Layer	
388 Total						

Drill tolerances:  
For 7.874mil mil drill via +0/-7.874mil  
For 16 mil drill via +0/-16 mil  
For PTH +/- 3 mil  
For NPTH +/- 2 mil  
2. This not an impedance controlled board

ALL ARTWORK VIEWED FROM TOP SIDE	BOARD #: 010025	REV: E1	SUN REV: Not In VersionControl
LAYER NAME = Drill Drawing	TID #: TIDA-010025		
PLOT NAME = Drill Drawing	GENERATED : 10/10/2018 12:11:07 PM		TEXAS INSTRUMENTS



ALL ARTWORK VIEWED FROM TOP SIDE	BOARD #: 010025	REV: E1	SUN REV: Not In VersionControl
LAYER NAME =	TID #: TIDA-010025		
PLOT NAME = Board Dimensions	GENERATED : 10/10/2018 12:11:09 PM		TEXAS INSTRUMENTS