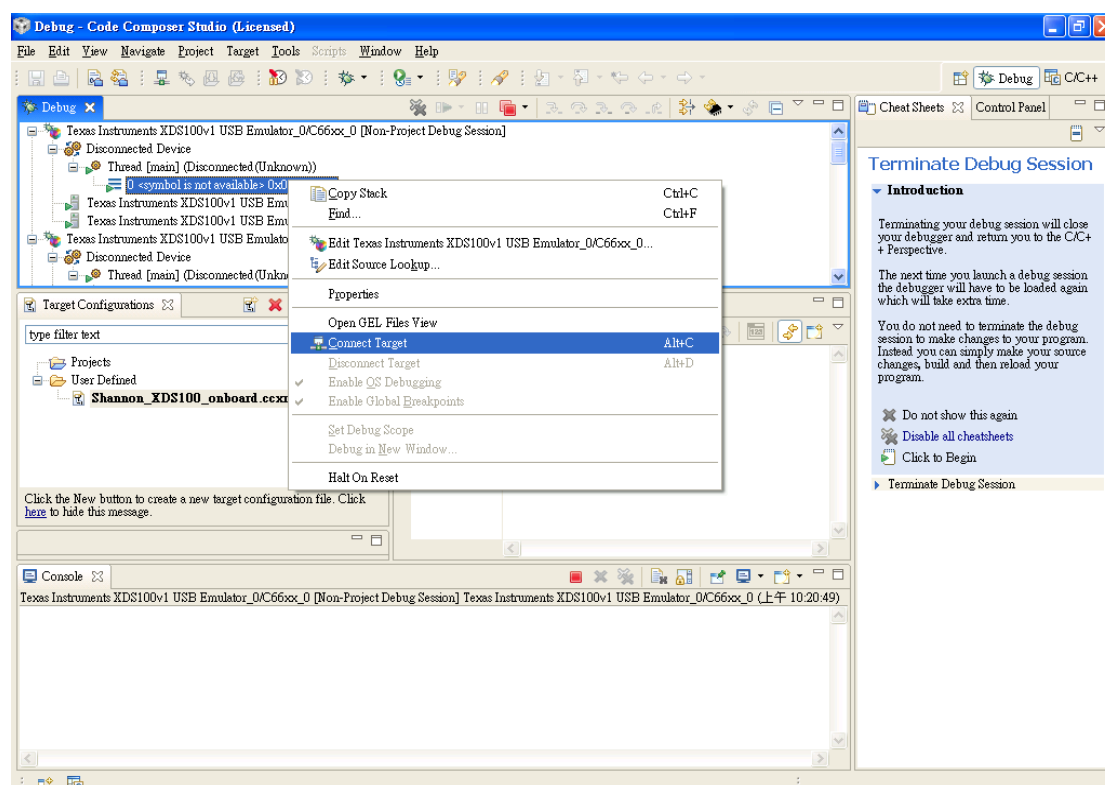


# TMDSEVM665xL FPGA Upgrade User Guide

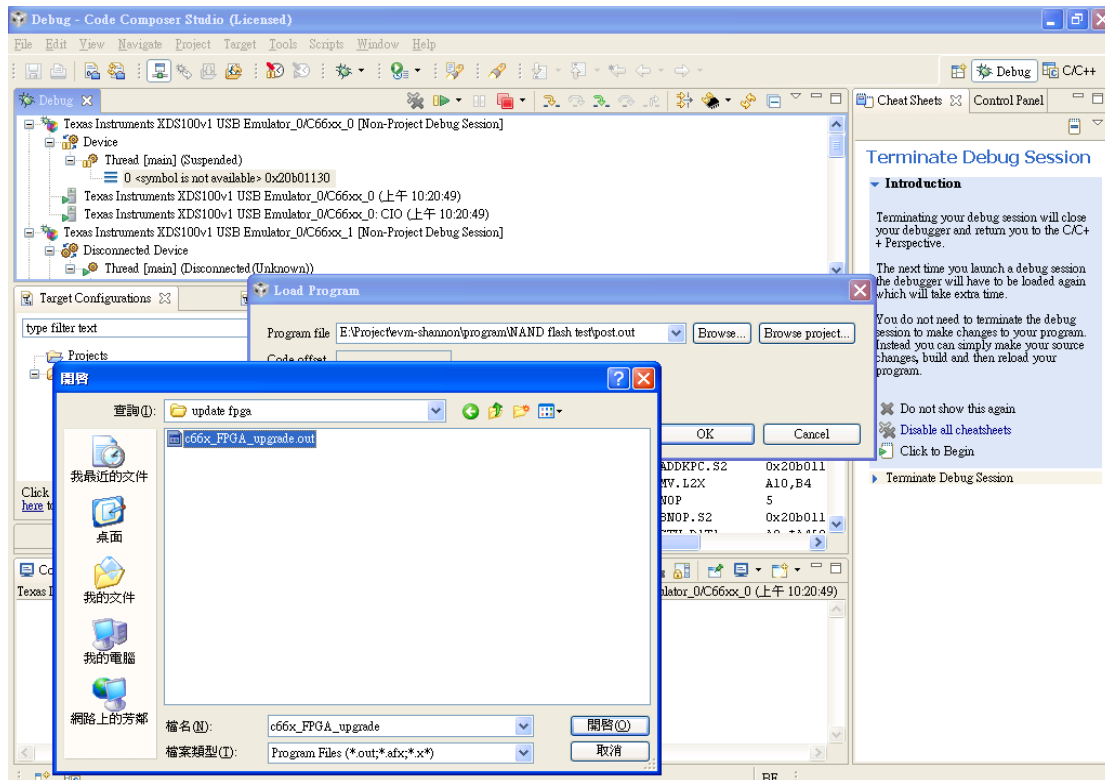
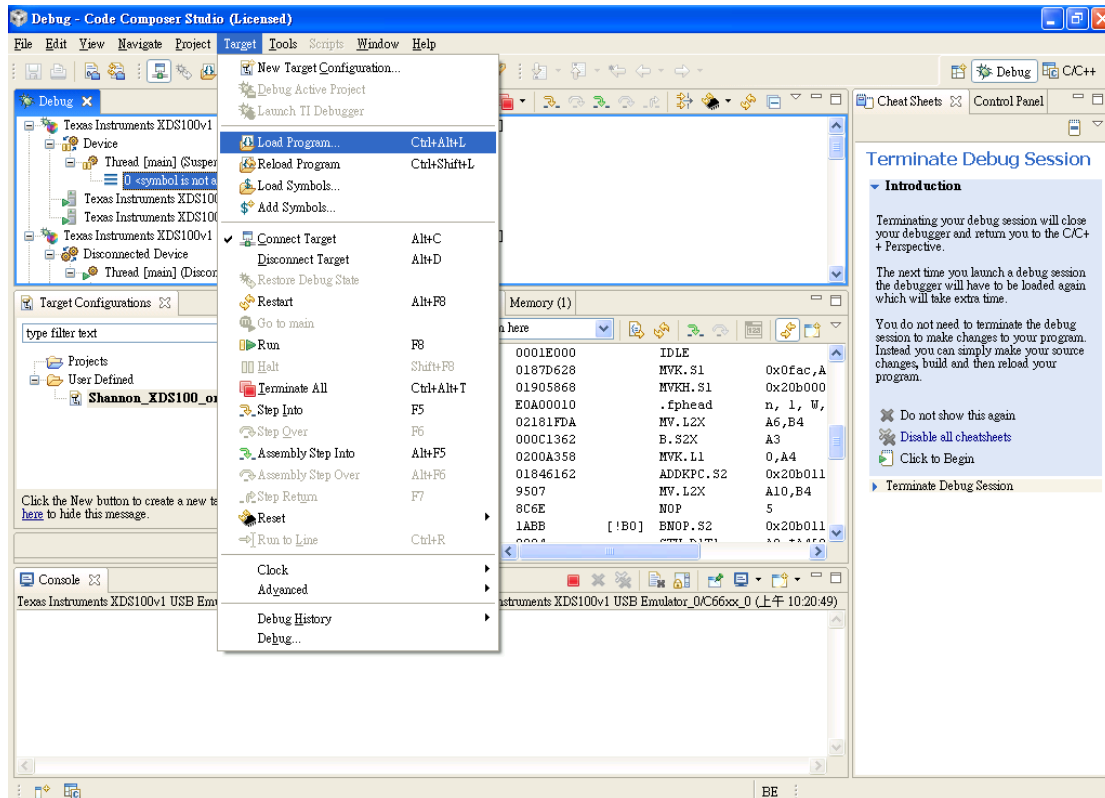
TI provides a way to upgrade the FPGA via the DSP's SPI interface. Before upgrading, users should acquire the update utility called "fpga\_evmmc6657l.out" for TMDSEVM6657L EVM along with the desired FPGA image file.

Users can update FPGA through following steps:

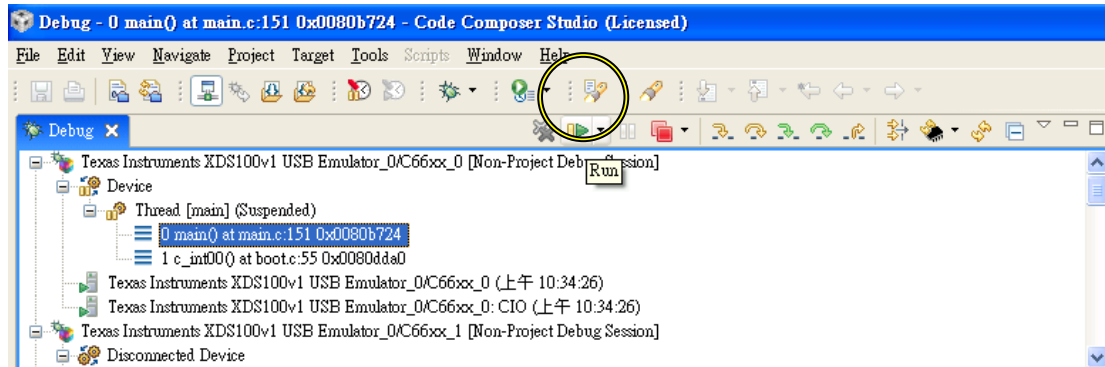
1. Power off the EVM. Connect your PC to the EVM DSP via the on-board XDS100 or XDS560V2 with CCS. Set the DIP switches to the NOBOOT setting. (Refer to the EVM Hardware Design Guide if needed.) Power on the EVM. Start CCS.
2. Connect to any core of the DSP as the target.



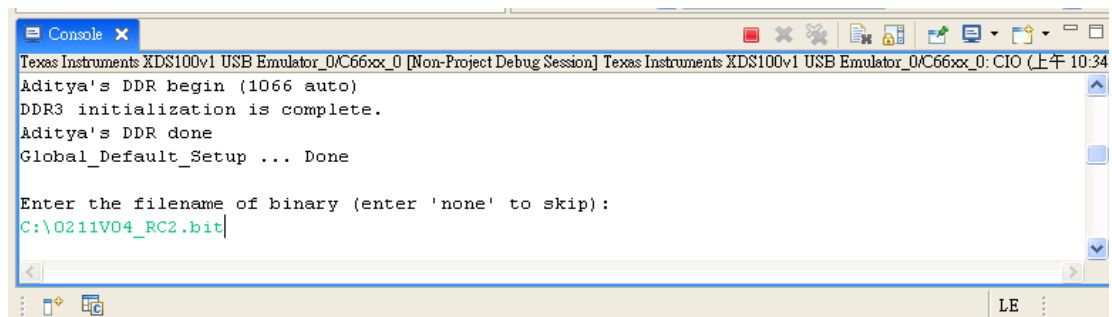
### 3. Load the program “fpga\_evmc6657l.out” from your PC.



4. Run the program.



5. Input the updated image file path and name.



Example: **c:\0211V04\_RC2.bit**

The program then loads the FPGA bit program into its non-volatile storage.

